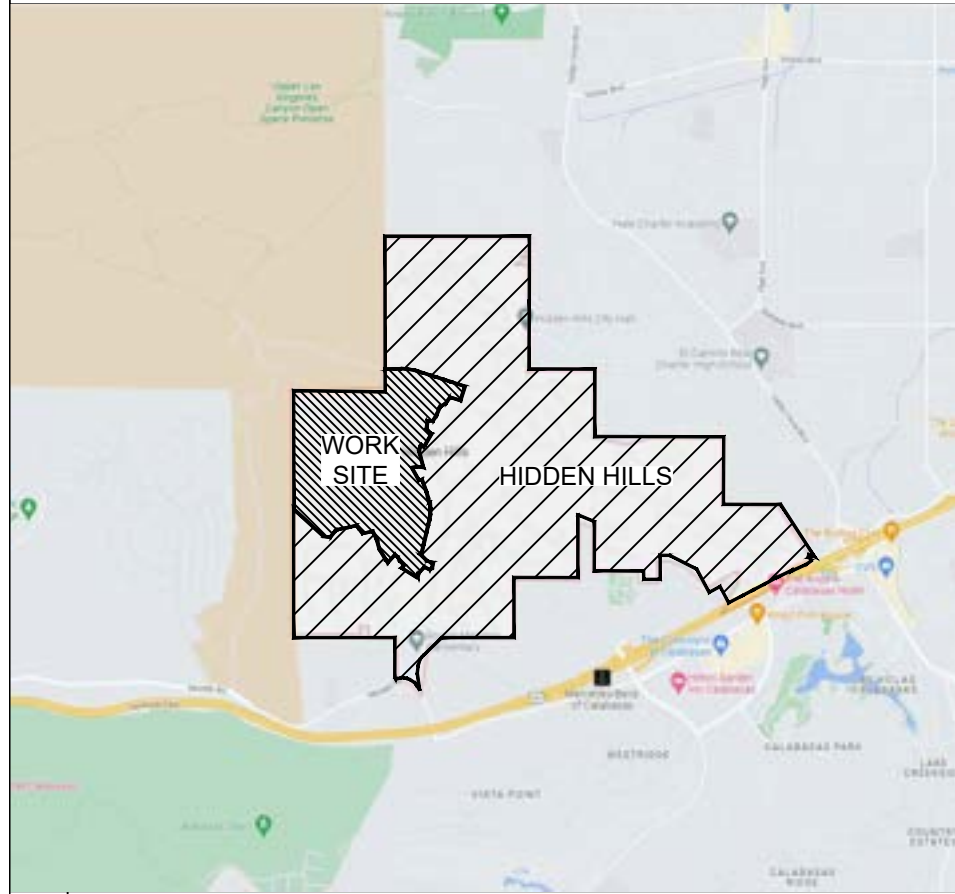


### JOB DESCRIPTION

THIS JOB WILL PLACE (38,042') 1.25" SDR11 CONDUIT, (39) 24X36X24 SPLICE BOXES, (9) 11X18X12 PULLBOXES, AND (55) 10X10X18 FLOWER POTS TO SERVE 140 SFU IN PHASE 5 OF HIDDEN HILLS.

### VICINITY MAP

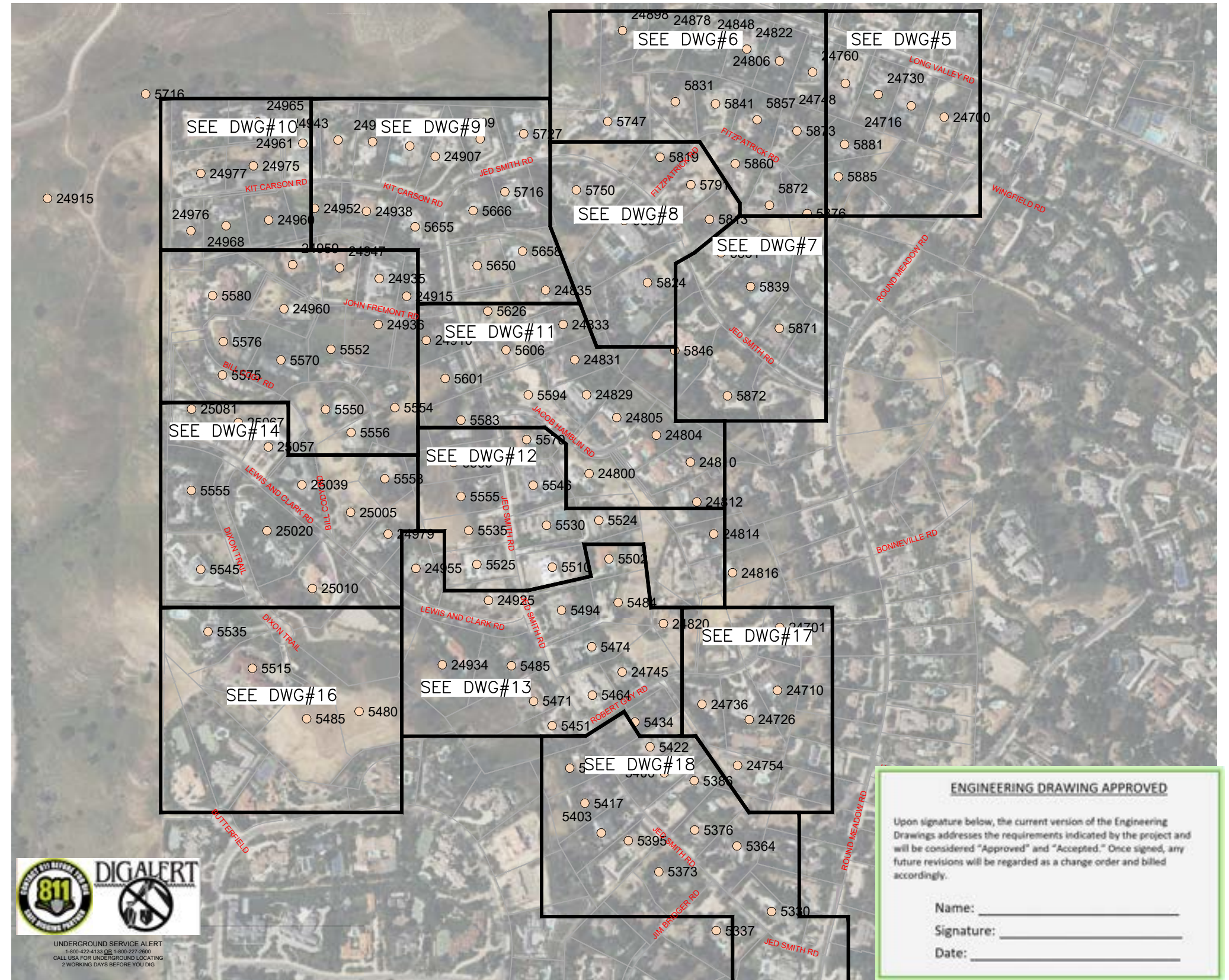
N.T.S.



### LEGEND

TELCO MANHOLE	BORE PIT	FIRE HYDRANT
TELCO VAULT	BRASS CAP	GAS VALVE
TELCO BOX	CATV PED	STREET LIGHT
FLOWER POT	CULVERT	SEWER MANHOLE
TELCO X-BOX	ELEC CABINET/BOX (SCE)	STORM DRAIN
SOLELY OWNED POLE	ELEC MANHOLE	WATER MANHOLE
JOINT POLE	ELEC TRANSFORMER	WATER METER
ANCHOR	ELEC J-BOX	WATER VALVE
BORE	FENCE LINE	x
DUCT - NEW	GAS	G
DUCT - NEW + SERVICE	IRRIGATION	IRRG
DUCT - EXISTING	PROPERTY LINE	P/L
DUCT - FUTURE	UTILITY EASEMENT	PUE
SERVICE - AERIAL	RIGHT OF WAY	ROW
ELECTRICAL (SCE)	SEWER	S
CABLE TV	STORM DRAIN	SD
CENTERLINE	TELEPHONE	T
BACK OF CURB	WATER	W

### HIDDEN HILLS PHASE 5 - 140 SFU



#### ENGINEERING DRAWING APPROVED

Upon signature below, the current version of the Engineering Drawings addresses the requirements indicated by the project and will be considered "Approved" and "Accepted." Once signed, any future revisions will be regarded as a change order and billed accordingly.

Name: \_\_\_\_\_  
 Signature: \_\_\_\_\_  
 Date: \_\_\_\_\_



JOB NO. HIDDEN HILLS - PHASE 5  
 LOCATION HIDDEN HILLS, CA  
 ENGR JOY PADILLA TEL 909-457-8448

SUBJECT  
**COVER SHEET**  
 TYPE OF CONST  
**DUCT PLACEMENT**  
 DWG 1 OF 20

VERSION  
 09/07/2023  
CONFIDENTIAL AND PROPRIETARY INFORMATION  
 THE INFORMATION CONTAINED HEREIN, IS NOT FOR USE OR  
 DISCLOSURE OUTSIDE INYO NETWORKS, INC. OR THEIR  
 AFFILIATED COMPANIES EXCEPT UNDER WRITTEN AGREEMENT

#### SHEET INDEX

DWG 1 - COVER PAGE
DWG 2 - BILL OF MATERIALS
DWG 3 - TYPICAL CONST. DETAILS
DWG 4 - TYPICAL BOX DETAILS
DWG 5 TO 20 - CONDUIT DESIGN

**BILL OF MATERIALS**

**CONDUIT**

CALLOUT	QUANTITY	ITEM DESCRIPTION	LENGTH (FT)	TOTAL
1	2	1.25" SDR11 CONDUIT	340	680
2	2	1.25" SDR11 CONDUIT	140	280
3	2	1.25" SDR11 CONDUIT	30	60
4	2	1.25" SDR11 CONDUIT	150	300
5	2	1.25" SDR11 CONDUIT	300	600
6	2	1.25" SDR11 CONDUIT	20	40
7	2	1.25" SDR11 CONDUIT	161	322
8	2	1.25" SDR11 CONDUIT	20	40
9	3	1.25" SDR11 CONDUIT	140	420
10	2	1.25" SDR11 CONDUIT	250	500
11	2	1.25" SDR11 CONDUIT	10	20
12	2	1.25" SDR11 CONDUIT	130	260
13	2	1.25" SDR11 CONDUIT	110	220
14	2	1.25" SDR11 CONDUIT	45	90
15	3	1.25" SDR11 CONDUIT	205	615
16	2	1.25" SDR11 CONDUIT	10	20
17	2	1.25" SDR11 CONDUIT	45	90
18	4	1.25" SDR11 CONDUIT	200	800
19	2	1.25" SDR11 CONDUIT	45	90
20	2	1.25" SDR11 CONDUIT	315	630
21	2	1.25" SDR11 CONDUIT	70	140
22	2	1.25" SDR11 CONDUIT	45	90
23	2	1.25" SDR11 CONDUIT	290	580
24	2	1.25" SDR11 CONDUIT	45	90
25	2	1.25" SDR11 CONDUIT	432	864
26	2	1.25" SDR11 CONDUIT	135	270
27	2	1.25" SDR11 CONDUIT	45	90
28	2	1.25" SDR11 CONDUIT	10	20
29	2	1.25" SDR11 CONDUIT	190	380
30	2	1.25" SDR11 CONDUIT	10	20
31	2	1.25" SDR11 CONDUIT	45	90
32	2	1.25" SDR11 CONDUIT	162	324
33	4	1.25" SDR11 CONDUIT	30	120
34	2	1.25" SDR11 CONDUIT	125	250
35	2	1.25" SDR11 CONDUIT	10	20
36	2	1.25" SDR11 CONDUIT	45	90
37	2	1.25" SDR11 CONDUIT	190	380
38	2	1.25" SDR11 CONDUIT	45	90
39	4	1.25" SDR11 CONDUIT	100	400
40	2	1.25" SDR11 CONDUIT	10	20
41	4	1.25" SDR11 CONDUIT	105	420
42	2	1.25" SDR11 CONDUIT	45	90
43	2	1.25" SDR11 CONDUIT	200	400
44	2	1.25" SDR11 CONDUIT	90	180
45	2	1.25" SDR11 CONDUIT	215	430
46	2	1.25" SDR11 CONDUIT	10	20
47	2	1.25" SDR11 CONDUIT	45	90
48	2	1.25" SDR11 CONDUIT	240	480
49	2	1.25" SDR11 CONDUIT	45	90
50	4	1.25" SDR11 CONDUIT	75	300
51	2	1.25" SDR11 CONDUIT	168	336
52	2	1.25" SDR11 CONDUIT	10	20
53	2	1.25" SDR11 CONDUIT	45	90
54	2	1.25" SDR11 CONDUIT	290	580
55	2	1.25" SDR11 CONDUIT	10	20
56	3	1.25" SDR11 CONDUIT	60	180
57	2	1.25" SDR11 CONDUIT	283	566
58	2	1.25" SDR11 CONDUIT	40	80
59	4	1.25" SDR11 CONDUIT	85	340
60	2	1.25" SDR11 CONDUIT	10	20
61	2	1.25" SDR11 CONDUIT	165	330
62	2	1.25" SDR11 CONDUIT	115	230
63	2	1.25" SDR11 CONDUIT	40	80
64	2	1.25" SDR11 CONDUIT	250	500
65	2	1.25" SDR11 CONDUIT	175	350
66	2	1.25" SDR11 CONDUIT	272	544
67	2	1.25" SDR11 CONDUIT	40	80
68	4	1.25" SDR11 CONDUIT	172	688
69	2	1.25" SDR11 CONDUIT	10	20
70	2	1.25" SDR11 CONDUIT	40	80
71	2	1.25" SDR11 CONDUIT	230	460
72	2	1.25" SDR11 CONDUIT	40	80
73	4	1.25" SDR11 CONDUIT	95	380
74	2	1.25" SDR11 CONDUIT	10	20

CALLOUT	QUANTITY	ITEM DESCRIPTION	LENGTH (FT)	TOTAL
75	2	1.25" SDR11 CONDUIT	40	80
76	2	1.25" SDR11 CONDUIT	155	310
77	2	1.25" SDR11 CONDUIT	10	20
78	2	1.25" SDR11 CONDUIT	50	100
79	5	1.25" SDR11 CONDUIT	40	200
80	3	1.25" SDR11 CONDUIT	178	534
81	2	1.25" SDR11 CONDUIT	240	480
82	2	1.25" SDR11 CONDUIT	10	20
83	2	1.25" SDR11 CONDUIT	50	100
84	2	1.25" SDR11 CONDUIT	330	660
85	2	1.25" SDR11 CONDUIT	10	20
86	3	1.25" SDR11 CONDUIT	155	465
87	4	1.25" SDR11 CONDUIT	105	420
88	2	1.25" SDR11 CONDUIT	50	100
89	3	1.25" SDR11 CONDUIT	105	315
90	2	1.25" SDR11 CONDUIT	300	600
91	2	1.25" SDR11 CONDUIT	390	780
92	2	1.25" SDR11 CONDUIT	40	80
93	2	1.25" SDR11 CONDUIT	450	900
94	2	1.25" SDR11 CONDUIT	250	500
95	2	1.25" SDR11 CONDUIT	10	20
96	2	1.25" SDR11 CONDUIT	40	80
97	2	1.25" SDR11 CONDUIT	338	676
98	3	1.25" SDR11 CONDUIT	55	165
99	2	1.25" SDR11 CONDUIT	40	80
100	2	1.25" SDR11 CONDUIT	210	420
101	2	1.25" SDR11 CONDUIT	10	20
102	2	1.25" SDR11 CONDUIT	50	100
103	2	1.25" SDR11 CONDUIT	205	410
104	3	1.25" SDR11 CONDUIT	145	435
105	2	1.25" SDR11 CONDUIT	10	20
106	2	1.25" SDR11 CONDUIT	305	610
107	2	1.25" SDR11 CONDUIT	345	690
108	2	1.25" SDR11 CONDUIT	50	100
109	2	1.25" SDR11 CONDUIT	560	1120
110	2	1.25" SDR11 CONDUIT	100	200
111	2	1.25" SDR11 CONDUIT	152	304
112	2	1.25" SDR11 CONDUIT	10	20
113	2	1.25" SDR11 CONDUIT	50	100
114	2	1.25" SDR11 CONDUIT	225	450
115	2	1.25" SDR11 CONDUIT	10	20
116	2	1.25" SDR11 CONDUIT	50	100
117	2	1.25" SDR11 CONDUIT	182	364
118	4	1.25" SDR11 CONDUIT	45	180
119	2	1.25" SDR11 CONDUIT	385	770
120	2	1.25" SDR11 CONDUIT	10	20
121	2	1.25" SDR11 CONDUIT	40	80
122	2	1.25" SDR11 CONDUIT	275	550
123	3	1.25" SDR11 CONDUIT	115	345
124	2	1.25" SDR11 CONDUIT	10	20
125	2	1.25" SDR11 CONDUIT	40	80
126	2	1.25" SDR11 CONDUIT	130	260
127	2	1.25" SDR11 CONDUIT	10	20
128	2	1.25" SDR11 CONDUIT	50	100
129	4	1.25" SDR11 CONDUIT	170	680
130	2	1.25" SDR11 CONDUIT	50	100
131	2	1.25" SDR11 CONDUIT	250	500
132	2	1.25" SDR11 CONDUIT	15	30
133	2	1.25" SDR11 CONDUIT	50	100
134	4	1.25" SDR11 CONDUIT	160	640
135	2	1.25" SDR11 CONDUIT	50	100
136	2	1.25" SDR11 CONDUIT	250	500
137	2	1.25" SDR11 CONDUIT	10	20
138	3	1.25" SDR11 CONDUIT	60	180
139	2	1.25" SDR11 CONDUIT	50	100
140	2	1.25" SDR11 CONDUIT	250	500

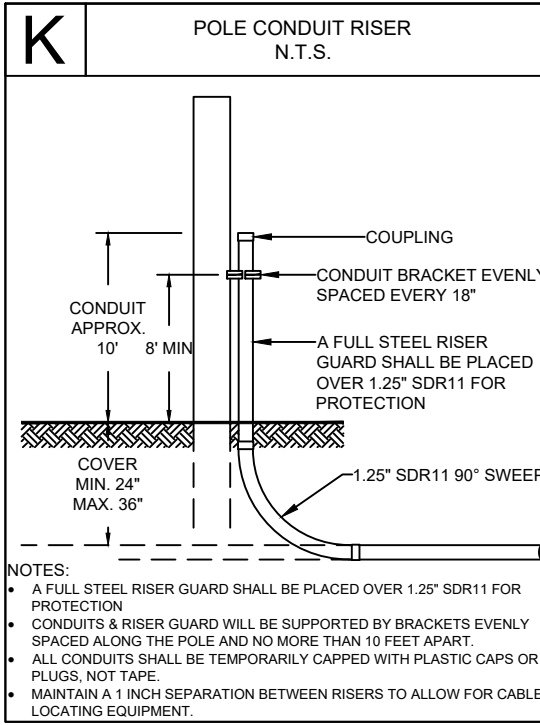
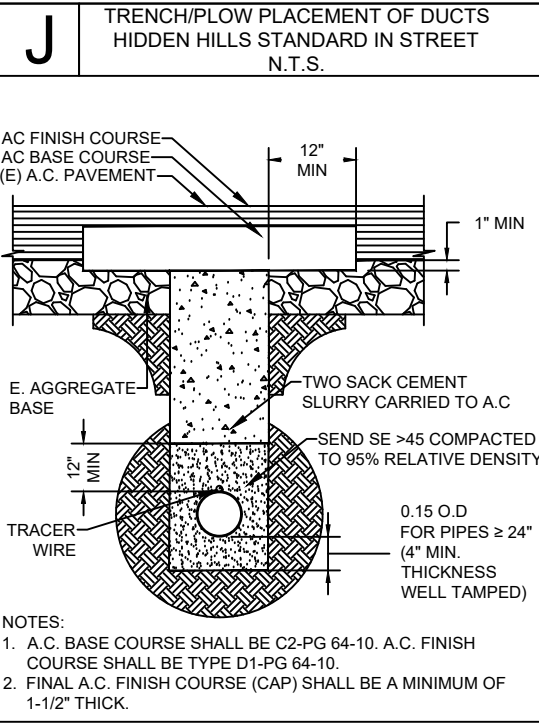
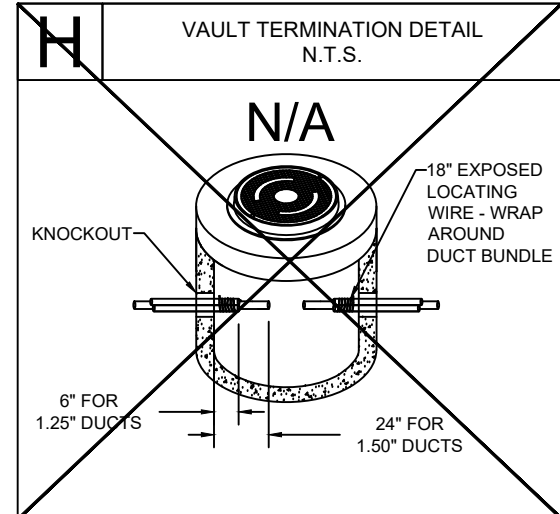
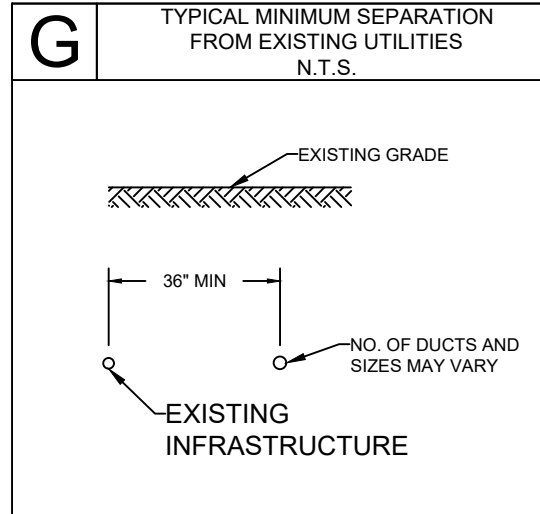
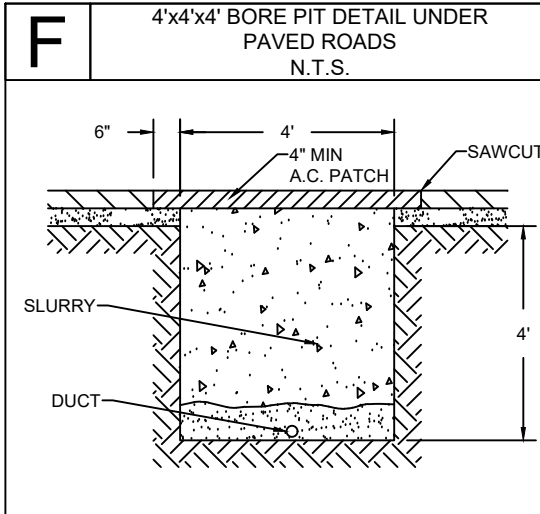
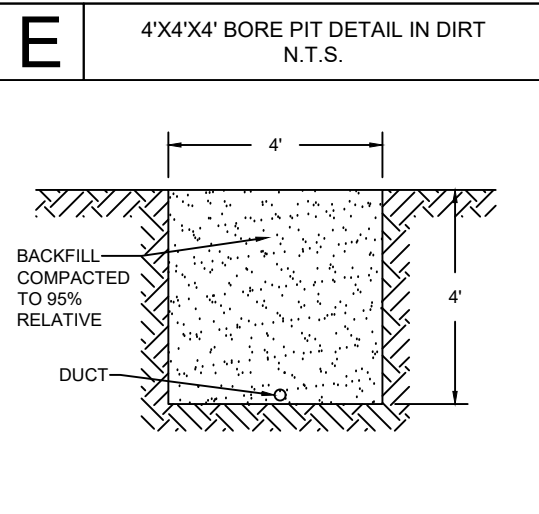
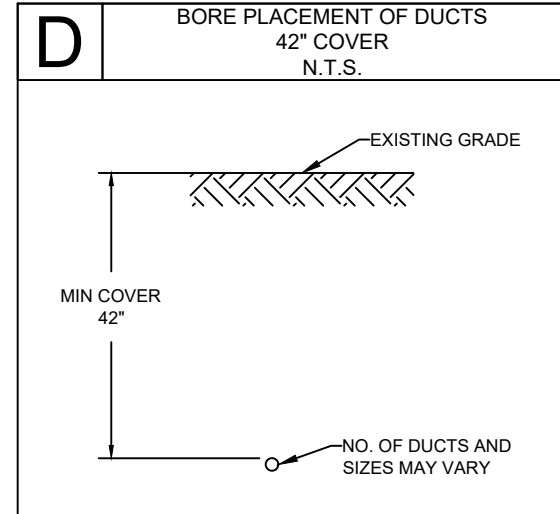
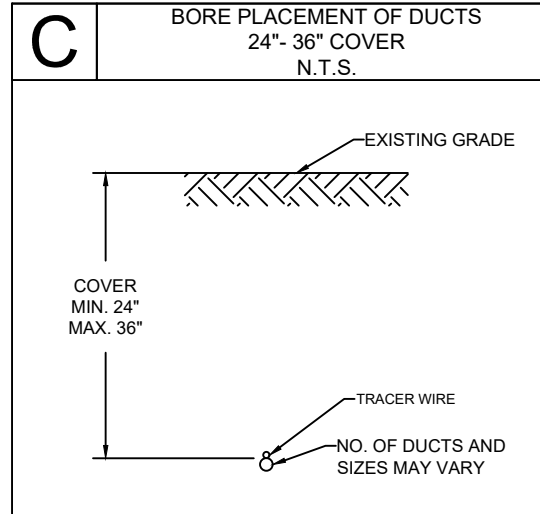
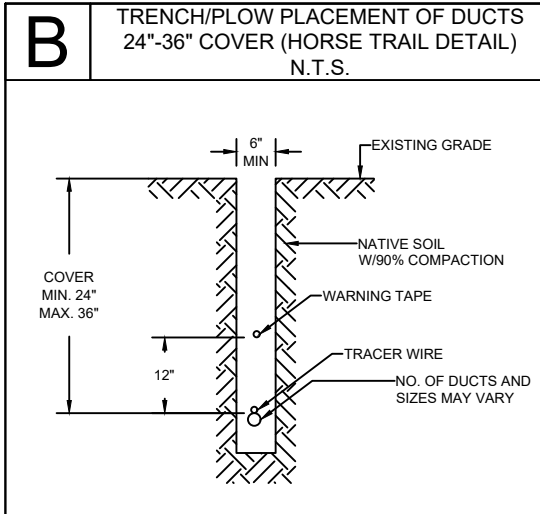
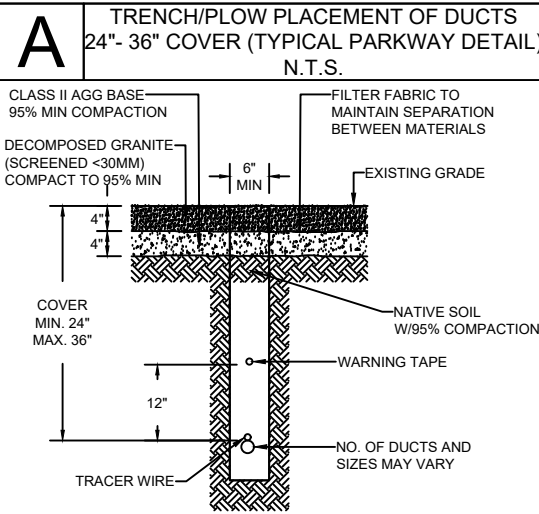
**BOXES**

CALLOUT	ITEM DESCRIPTION	STATION - DWG#
FP#1	10X10X12 FLOWER POT (@ GRADE)	STA N/A - DWG#5
FP#2	10X10X12 FLOWER POT (@ GRADE)	STA N/A - DWG#5
FP#3	10X10X12 FLOWER POT (@ GRADE)	STA N/A - DWG#6
FP#4	10X10X12 FLOWER POT (@ GRADE)	STA N/A - DWG#6
FP#5	10X10X12 FLOWER POT (@ GRADE)	STA 3+70 - DWG#7
FP#6	10X10X12 FLOWER POT (@ GRADE)	STA 3+70 - DWG#7
FP#7	10X10X12 FLOWER POT (@ GRADE)	STA 5+67 - DWG#7
FP#8	10X10X12 FLOWER POT (@ GRADE)	STA 7+48 - DWG#7
FP#9	10X10X12 FLOWER POT (@ GRADE)	STA 10+52 - DWG#8
FP#10	10X10X12 FLOWER POT (@ GRADE)	STA 13+26 - DWG#8
FP#11	10X10X12 FLOWER POT (@ GRADE)	STA 18+51 - DWG#9
FP#12	10X10X12 FLOWER POT (@ GRADE)	STA 20+24 - DWG#9
FP#13	10X10X12 FLOWER POT (@ GRADE)	STA 1+30 - DWG#9
FP#14	10X10X12 FLOWER POT (@ GRADE)	STA 3+08 - DWG#9
FP#15	10X10X12 FLOWER POT (@ GRADE)	STA 3+08 - DWG#9
FP#16	10X10X12 FLOWER POT (@ GRADE)	STA 4+98 - DWG#9
FP#17	10X10X12 FLOWER POT (@ GRADE)	STA 4+98 - DWG#9
FP#18	10X10X12 FLOWER POT (@ GRADE)	STA 7+33 - DWG#10
FP#19	10X10X12 FLOWER POT (@ GRADE)	STA 23+76 - DWG#9
FP#20	10X10X12 FLOWER POT (@ GRADE)	STA 25+96 - DWG#9
FP#21	10X10X12 FLOWER POT (@ GRADE)	STA 2+50 - DWG#15
FP#22	10X10X12 FLOWER POT (@ GRADE)	STA 5+85 - DWG#15
FP#23	10X10X12 FLOWER POT (@ GRADE)	STA 28+22 - DWG#11
FP#24	10X10X12 FLOWER POT (@ GRADE)	STA 0+36 - DWG#11
FP#25	10X10X12 FLOWER POT (@ GRADE)	STA 2+98 - DWG#11
FP#29	10X10X12 FLOWER POT (@ GRADE)	STA 6+33 - DWG#11
FP#30	10X10X12 FLOWER POT (@ GRADE)	STA 33+66 - DWG#12
FP#31	10X10X12 FLOWER POT (@ GRADE)	STA 35+28 - DWG#12
FP#32	10X10X12 FLOWER POT (@ GRADE)	STA 37+48 - DWG#12
FP#33	10X10X12 FLOWER POT (@ GRADE)	STA 38+40 - DWG#12
FP#34	10X10X12 FLOWER POT (@ GRADE)	STA 39+82 - DWG#13
FP#35	10X10X12 FLOWER POT (@ GRADE)	STA 2+42 - DWG#13
FP#36	10X10X12 FLOWER POT (@ GRADE)	STA 4+17 - DWG#13
FP#37	10X10X12 FLOWER POT (@ GRADE)	STA 8+87 - DWG#14
FP#38	10X10X12 FLOWER POT (@ GRADE)	STA 9+78 - DWG#14
FP#39	10X10X12 FLOWER POT (@ GRADE)	STA 11+79 - DWG#14
FP#40	10X10X12 FLOWER POT (@ GRADE)	STA 13+69 - DWG#14
FP#41	10X10X12 FLOWER POT (@ GRADE)	STA 17+80 - DWG#14
FP#42	10X10X12 FLOWER POT (@ GRADE)	STA 3+31 - DWG#14
FP#43	10X10X12 FLOWER POT (@ GRADE)	STA 8+00 - DWG#16
FP#44	10X10X12 FLOWER POT (@ GRADE)	STA 1+00 - DWG#14
FP#45	10X10X12 FLOWER POT (@ GRADE)	STA 7+68 - DWG#15
FP#46	10X10X12 FLOWER POT (@ GRADE)	STA 41+60 - DWG#13
FP#47	10X10X12 FLOWER POT (@ GRADE)	STA 43+95 - DWG#13
FP#48	10X10X12 FLOWER POT (@ GRADE)	STA 46+08 - DWG#18
FP#49	10X10X12 FLOWER POT (@ GRADE)	STA 3+68 - DWG#13
FP#50	10X10X12 FLOWER POT (@ GRADE)	STA 6+44 - DWG#17
FP#51	10X10X12 FLOWER POT (@ GRADE)	STA 7+51 - DWG#17
FP#52	10X10X12 FLOWER POT (@ GRADE)	STA 8+50 - DWG#17
FP#53	10X10X12 FLOWER POT (@ GRADE)	STA 47+63 - DWG#18
FP#54	10X10X12 FLOWER POT (@ GRADE)	STA 49+44 - DWG#18
FP#55	10X10X12 FLOWER POT (@ GRADE)	STA 51+38 - DWG#18
FP#56	10X10X12 FLOWER POT (@ GRADE)	STA 55+07 - DWG#18
FP#57	10X10X12 FLOWER POT (@ GRADE)	STA 55+07 - DWG#18
FP#58	10X10X12 FLOWER POT (@ GRADE)	STA 57+16 - DWG#18
SB#5395	11X18X12TR (@ GRADE)	STA 51+38 - DWG#18
SB#5403	24X36X36TR (@ GRADE)	STA 49+44 - DWG#18
SB#5431	11X18X12TR (@ GRADE)	STA 47+63 - DWG#18
SB#5434	24X36X36TR (@ GRADE)	STA 3+68 - DWG#13
SB#5451	24X36X36TR (@ GRADE)	STA 46+08 - DWG#18
SB#5471	24X36X36TR (@ GRADE)	STA 43+95 - DWG#13
SB#5480	24X36X36TR (@ GRADE)	STA 8+76 - DWG#16
SB#5485	24X36X36TR (@ GRADE)	STA 41+60 - DWG#13
SB#5525	24X36X36TR (@ GRADE)	STA 38+40 - DWG#12
SB#5555	24X36X36TR (@ GRADE)	STA 35+28 - DWG#12
SB#5556	24X36X36TR (@ GRADE)	STA 3+99 - DWG#15
SB#5565	11X18X12TR (@ GRADE)	STA 33+66 - DWG#12
SB#5575	24X36X36TR (@ GRADE)	STA 7+68 - DWG#15
SB#5580	24X36X36TR (@ GRADE)	STA 11+55 - DWG#15
SB#5583	24X36X36TR (@ GRADE)	STA 31+02 - DWG#11
SB#5655	24X36X36TR (@ GRADE)	STA 23+76 - DWG#9
SB#5666	24X36X36TR (@ GRADE)	STA 21+63 - DWG#9
SB#5709	24X36X36TR (@ GRADE)	STA 18+51 - DWG#9
SB#5727	11X18X12TR (@ GRADE)	STA 17+35 - DWG#9

CALLOUT	ITEM DESCRIPTION	STATION - DWG#
SB#5800	24X36X36TR (@ GRADE)	STA 10+52 - DWG#8
SB#5819	24X36X36TR (@ GRADE)	STA 13+26 - DWG#8
SB#5846	11X18X12TR (@ GRADE)	STA 7+48 - DWG#7
SB#5872	24X36X36TR (@ GRADE)	STA 5+67 - DWG#7
SB#24716	24X36X36TR (@ GRADE)	STA N/A - DWG#5
SB#24726	24X36X36TR (@ GRADE)	STA 7+51 - DWG#17
SB#24760	24X36X36TR (@ GRADE)	STA N/A - DWG#6
SB#24805	24X36X36TR (@ GRADE)	STA 5+74 - DWG#11
SB#24806	24X36X36TR (@ GRADE)	STA N/A - DWG#6
SB#24800	11X18X12TR (@ GRADE)	STA 5+74 - DWG#11
SB#24812	11X18X12TR (@ GRADE)	STA N/A - DWG#11
SB#24814	11X18X12TR (@ GRADE)	STA N/A - DWG#12
SB#24829	24X36X36TR (@ GRADE)	STA 3+87 - DWG#11
SB#24878	24X36X36TR (@ GRADE)	STA N/A - DWG#6
SB#24907	24X36X36TR (@ GRADE)	STA 20+24 - DWG#9
SB#24910	24X36X36TR (@ GRADE)	STA 28+22 - DWG#11
SB#24915	24X36X36TR (@ GRADE)	STA 25+96 - DWG#9
SB#24921	24X36X36TR (@ GRADE)	STA 1+30 - DWG#9
SB#24925	24X36X36TR (@ GRADE)	STA 39+82 - DWG#13
SB#24936	24X36X36TR (@ GRADE)	STA 4+00 - DWG#9
SB#24936	24X36X36TR (@ GRADE)	STA 2+50 - DWG#15
SB#24955	24X36X36TR (@ GRADE)	STA 4+17 - DWG#13
SB#24959	24X36X36TR (@ GRADE)	STA 5+

**CONSTRUCTION NOTES**

1. THE LOCATION OF EXISTING UTILITIES ARE FOR REFERENCE AND ARE SHOWN IN THEIR APPROXIMATE LOCATION ONLY. EXACT LOCATIONS MUST BE LOCATED BY UNDERGROUND SERVICE ALERT BEFORE ANY DIGGING.
2. THE CONTRACTOR SHALL HAVE A COPY OF THE APPROVED CONSTRUCTION PLANS AND APPROVED TRAFFIC CONTROL PLAN AT THE PROJECT SITE AT ALL TIMES.
3. ALL UTILITIES CROSSING EXISTING CITY STREETS MUST BE BORED OR PUNCHED, UNLESS PERMISSION TO OPEN CUT HAS BEEN GIVEN IN WRITING BY THE CITY ENGINEER OR HIS AUTHORIZED REPRESENTATIVE. BEFORE STARTING ANY STREET BORE THAT CROSSES A MAJOR ROADWAY. THE CONTRACTOR MUST SCHEDULE A SEPARATE FIELD MEETING WITH THE PROJECT INSPECTOR TO VERIFY THAT ALL UNDERGROUND SERVICE ALERT AND DESIGN REQUIREMENTS ARE MET.
4. THE UTILITY COMPANY SHALL CALL THE ENGINEERING DIVISION 24 HOURS IN ADVANCE OF STARTING WORK GIVING LOCATION AND PERMIT NUMBER IN ORDER TO SCHEDULE INSPECTIONS. STATUS UPDATES SHALL BE MADE WEEKLY.
5. ALIGNMENT ON PLANS MAY NOT DEVIATE MORE THAN 1' WITHOUT GETTING THE APPROVAL OF THE GOVERNING AGENCY.
6. ALL WORK REQUIRING ASPHALT REPLACEMENT, CONCRETE REPLACEMENT OR RESURFACING IN CITY RIGHT OF WAY WILL REQUIRE A FINAL INSPECTION WITH THE UTILITY COMPANY REPRESENTATIVE AT TIME OF COMPLETION.
7. ALL STREET EXCAVATIONS SHALL BE TWO SACK SLURRY BACK FILLED. PAVED STREETS AND DRIVEWAYS SHALL BE REPAVED IN A MANNER THAT MATCHES THE PAVEMENT PRIOR TO CONSTRUCTION. ANY TRENCHES ON PRIVATE PROPERTY DO NOT REQUIRE SLURRY BACKFILL BUT ARE REQUIRED TO COMPACT TO 90%.
8. PROTECTIVE DEVICES ARE REQUIRED! THESE PROTECTIVE DEVICES INCLUDE, ORANGE VEST (DAYTIME), REFLECTIVE ORANGE VEST (NIGHTTIME), TRAFFIC CONES, BARRICADES FLASHING LIGHTS, FLARES, AND ANY OTHER TRAFFIC CONTROL DEVICE AS REQUIRED.
9. THE CONTRACTOR WILL SUBMIT A TRAFFIC CONTROL PLAN AS PART OF THE CONSTRUCTION PERMIT APPLICATION FOR ACTIVITIES ALONG STATE HIGHWAYS AND COUNTY ROADS. THE PLAN MUST FOLLOW THE RULES AND REGULATIONS OF THE GOVERNING AGENCY AND BE CONSISTENT WITH CONTRACTOR CONSTRUCTION METHODS AND ALL PLANNED ACTIVITIES ALONG STATE HIGHWAY AND COUNTY ROADS.
10. THE TRENCH BOTTOM SHALL BE SMOOTH, FLAT, AND WITHOUT SURFACE IRREGULARITIES; OTHERWISE, A SUFFICIENT AMOUNT OF BEDDING MATERIAL SHALL BE INSTALLED TO PROVIDE THE REQUIRED SURFACE. MAINTAIN A MINIMUM OF 36" COVER WITH 6" BACK FILL FREE OF DEBRIS, ROCKS AND CLODS.
11. ALL CONDUIT TO HAVE MINIMUM 24" COVER UNLESS OTHERWISE NOTED ON DRAWING SHEETS.
12. ROW DEPICTED ON THESE DRAWINGS HAVE NOT BEEN SURVEYED AND ARE REPRESENTED USING AVAILABLE RECORDS AND FIELD ARTIFACTS.



**SPANDREL NOTE:**  
DO NOT CUT ANY SPANDRELS UNLESS ABSOLUTELY REQUIRED. IF POTHOLING IS REQUIRED, RESTORE AREA TO LIKE OR NEW CONDITION



844-994-4448

JOB NO. HIDDEN HILLS - PHASE 5

LOCATION HIDDEN HILLS, CA

ENGR JOY PADILLA

TEL 909-457-8448

SUBJECT

**TYPICAL CONSTRUCTION DETAILS**

TYPE OF CONST

**DUCT PLACEMENT**

DWG 3 OF 20

VERSION

09/07/2023

**SHEET INDEX**

- DWG 1 - COVER PAGE
- DWG 2 - BILL OF MATERIALS
- DWG 3 - TYPICAL CONST. DETAILS
- DWG 4 - TYPICAL BOX DETAILS
- DWG 5 TO 20 - CONDUIT DESIGN

### A 1010/12 FLOWERPOT DETAIL

SKU: 10005049

Compare to: Christy 605T

MARKING OPTION CODES:  
 -00 BLANK  
 -11 WATER  
 -13 SEWER  
 -14 GROUND ROD

MODEL NO.	PRODUCT	DESCRIPTION	APPROX. WEIGHT	QTY PER PALLET
HTV10-S-CL-1	LID	10"x12" Traffic Valve Box Cover - Import	14	N/A
HTV10-S-BD-1	VALVE BOX	10"x12" Traffic Valve Box - Import	63	36
HTV10-S-CL-USA	LID	10"x12" Traffic Valve Box Cover - USA	14	N/A
HTV10-S-BD-USA	VALVE BOX	10"x12" Traffic Valve Box - USA	14	36

### B 1118/24 TIER 22 HANDHOLE DETAIL

SKU: 200059176

Hardware:

- Stainless Steel 3/8" and 1/2"
- Hex Head Standard Bolts
- Penta Head Bolts
- One Way Security Bolts
- Security Torque Bolts

Options:

- Standard and custom Nameplates
- Mouse Holes
- Knock Outs
- Power EMS Cover
- AMR Cover

Load Ratings:

- ANSI/SCTE77 Tier 15 & Tier 22
- WUC 3.6

Boxes are Open Bottom and Stackable.

PART NO.	DESCRIPTION	APPROX. WEIGHT LBS.	QTY. PER PALLET
200016525	HPC 1118-12 Straight Wall Polymer Concrete Handhole Box w/ 1/2-13 SS Nut	56.00	1
200016489	HPC 1118-175 Configurable TIER-22 Solid Polymer Concrete Handhole Cover	NA	1

### C 2436/36 TIER 22 HANDHOLE DETAIL

SKU: 200059032

Hardware:

- Stainless Steel 3/8" and 1/2"
- Hex Head Standard Bolts
- Penta Head Bolts
- One Way Security Bolts
- Security Torque Bolts

Options:

- Standard and custom Nameplates
- Mouse Holes
- Knock Outs
- Power EMS Cover
- AMR Cover

Load Ratings:

- ANSI/SCTE77 Tier 15 & Tier 22
- WUC 3.6

Boxes are Open Bottom and Stackable.

PART NO.	DESCRIPTION	APPROX. WEIGHT LBS.	QTY. PER PALLET
200022166	HPC 2436-36 Straight Wall Polymer Concrete Handhole Box w/ 1/2-13 SS Nut	86	1
100032420	HPC 2436-3 Bolt Down TIER-22 Solid Polymer Concrete Handhole Cover BLANK	NA	1

### D FLOWERPOT & HANDHOLE OFFSET DETAIL

NOTES:

- HANDHOLE AND FLOWERPOT OFFSETS ARE MEASURED FROM CENTER OF HANDHOLE/FLOWERPOT.
- HANDHOLE AND FLOWERPOT OFFSETS ARE 4' OFF FENCE. IF NO FENCE IS AVAILABLE, USE PROPERTY LINE.
- IN LOCATIONS WHERE 4' OFFSET FROM FENCE/PROPERTY LINE IS NOT FEASIBLE DUE TO SPACE RESTRICTION, PLACE EDGE OF HANDHOLE/FLOWERPOT AGAINST FENCE/PROPERTY LINE.
- DO NOT PLACE ANY HANDHOLE/FLOWERPOT IN THE STREET. ALL HANDHOLE/FLOWERPOT SHALL BE PLACED IN THE SHOULDER WITHIN THE PUE.
- TRENCHLINE OFFSETS ARE VARIABLE AND ARE NOTED ON APPLICABLE DRAWINGS.

FROM FENCE/PL TO CENTER OF BOX IS A 4' OFFSET

TRENCH OFFSET IS VARIABLE, SEE DRAWINGS

FROM FENCE/PL TO CENTER OF BOX IS A 4' OFFSET

TRENCH OFFSET IS VARIABLE, SEE DRAWINGS

FROM FENCE/PL TO CENTER OF BOX IS A 4' OFFSET

### D 1730 HANDHOLE DETAIL

17" x 30" x 11" (INSIDE DIMENSIONS)

MEETS CALTRANS # 6T  
 NDOT #7, ADOT #7 SPECIFICATIONS

DESIGN LOAD: H-20 FULL TRAFFIC

CATALOG NUMBER	PRODUCT	DESCRIPTION	APPROX. WT. (LBS.)
CYB1730	BOX WITH SLAB	REINFORCED CONCRETE	288
CY1730SL	COVER	STEEL CHECKER PLATE	112
CY1730EXT	EXTENSION	12" HIGH REINFORCED CONCRETE	244
CYHDB1730	HOLD DOWN BOLT	HOLD DOWN PENTAHEAD BOLT (2 EA.)	

### F 3048 HANDHOLE DETAIL

WHEN ORDERING:  
 THE STANDARD SBC AR3048 KIT INCLUDES THE AR3048 BOX, (2) AR3048 EXTENSIONS, AR3048 LID, AND THE AR3048 SLAB. FOR OTHER COMPONENTS, ORDER BY CATALOG NUMBER.

DESIGN LOAD: LIGHT VEHICULAR TRAFFIC, 10,000 WHEEL LOAD

CATALOG NUMBER	PRODUCT	DESCRIPTION	APPROX. WT. (LBS.)
AR3048	BOX	POLYMER CONCRETE 18"	190 LBS.
AR304802TELE	LID	POLYMER CONCRETE 3"	94 LBS.
AR3048EX	EXTENSION	POLYMER CONCRETE 12"	136 LBS.
AR3048SL	SLAB	POLYMER CONCRETE 2"	120 LBS.

**Onward**  
Get Connected. Get Faster.

JOB NO. HIDDEN HILLS - PHASE 5

LOCATION HIDDEN HILLS, CA

ENGR JOY PADILLA TEL 909-457-8448

SUBJECT TRENCH ALIGNMENT

TYPE OF CONST DUCT PLACEMENT

DWG 5 OF 20

VERSION 09/07/2023

0 100' 200'

### SHEET INDEX

DWG 1 - COVER PAGE

DWG 2 - BILL OF MATERIALS

DWG 3 - TYPICAL CONST. DETAILS

DWG 4 - TYPICAL BOX DETAILS

DWG 5 TO 20 - CONDUIT DESIGN



**PLACEMENT NOTES:**

- (A) TIC MARK 3+36 TO START PH5 PL'D ON PHASE 4 (Ø) 1.25" SDR11 (CALLOUT #2 DWG#5)
- (1) START PH5 TO FP#1 PLACE 340' (Ø) 1.25" SDR11 PER DETAIL (B/3)
- (2) FP#1 TO SB#24716 PLACE 140' (Ø) 1.25" SDR11 PER DETAIL (B/3)
- (3) SB#24716 TO RISER POLE PLACE 30' (Ø) 1.25" SDR11 PER DETAIL (B/3) (K/3)
- (4) SB#24716 TO FP#2 PLACE 150' (Ø) 1.25" SDR11 PER DETAIL (B/3)
- (5) FP#2 TO SB#24760 PLACE 300' (Ø) 1.25" SDR11 PER DETAIL (B/3)

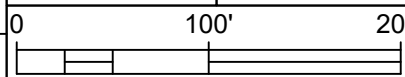
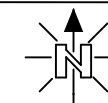


844-994-4448

JOB NO. HIDDEN HILLS - PHASE 5  
 LOCATION HIDDEN HILLS, CA  
 ENGR JOY PADILLA TEL 909-457-8448

SUBJECT TRENCH ALIGNMENT  
 TYPE OF CONST DUCT PLACEMENT  
 DWG 5 OF 20

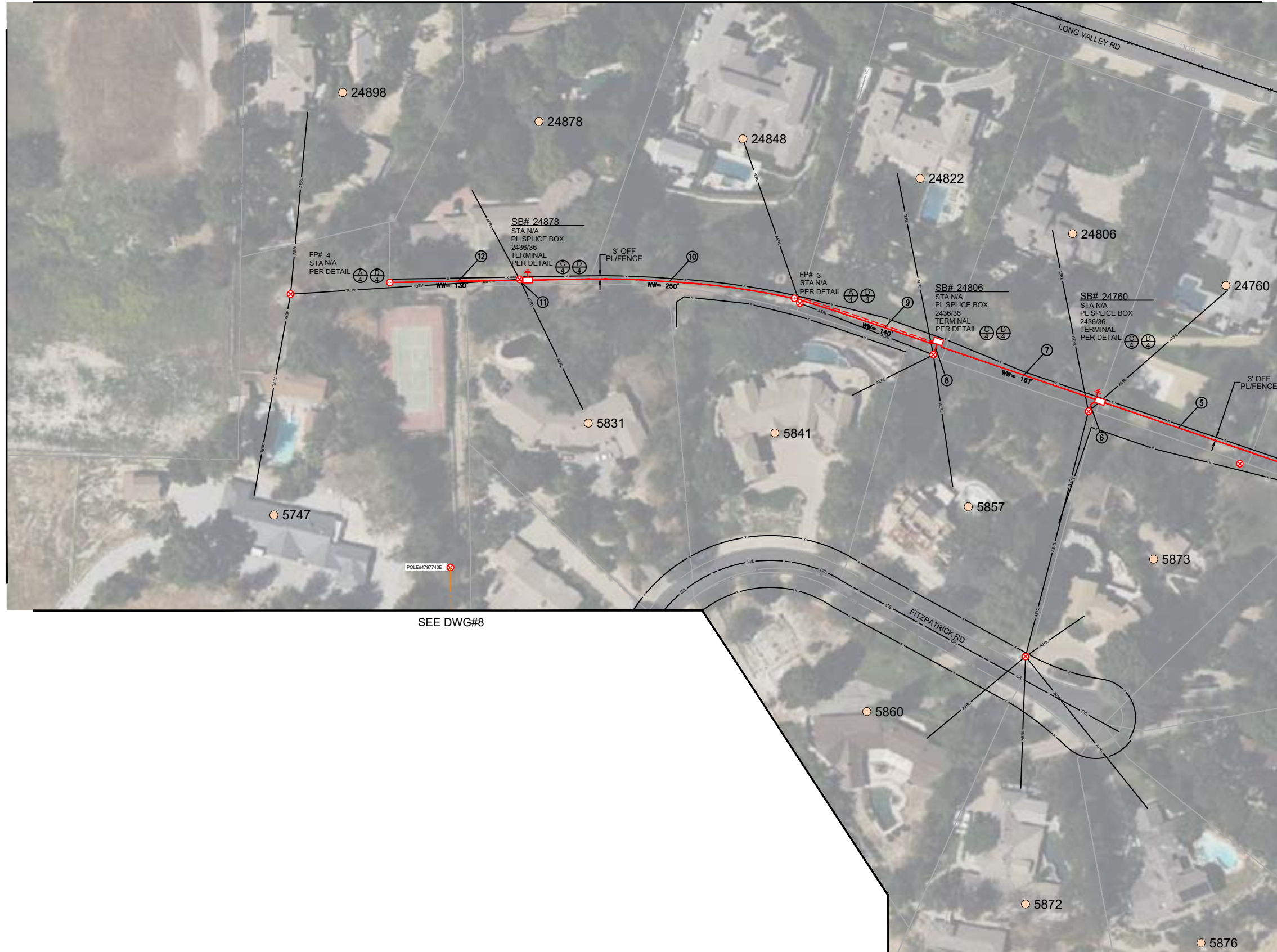
VERSION  
09/07/2023



**SHEET INDEX**

- DWG 1 - COVER PAGE
- DWG 2 - BILL OF MATERIALS
- DWG 3 - TYPICAL CONST. DETAILS
- DWG 4 - TYPICAL BOX DETAILS
- DWG 5 TO 20 - CONDUIT DESIGN

SEE PHASE 3



**PLACEMENT NOTES:**

- ⑤ FP#2 TO SB#24760  
PL'D ON DWG#5  
Ø 1.25" SDR11  
PER DETAIL (B/3)
- ⑥ SB#24760 TO RISER POLE  
PLACE 20'  
Ø 1.25" SDR11  
PER DETAIL (B/3) (K/3)
- ⑦ SB#24760 TO SB#24806  
PLACE 161'  
Ø 1.25" SDR11  
PER DETAIL (B/3)
- ⑧ SB#24806 TO RISER POLE  
PLACE 20'  
Ø 1.25" SDR11  
PER DETAIL (B/3) (K/3)
- ⑨ SB#24806 TO FP#3  
PLACE 140'  
Ø 1.25" SDR11  
PER DETAIL (B/3)
- ⑩ FP#3 TO SB#24878  
PLACE 250'  
Ø 1.25" SDR11  
PER DETAIL (B/3)
- ⑪ SB#24878 TO RISER POLE  
PLACE 10'  
Ø 1.25" SDR11  
PER DETAIL (B/3)
- ⑫ SB#24878 TO FP#4  
PLACE 130'  
Ø 1.25" SDR11  
PER DETAIL (B/3)

SEE DWG#7

FROM FP#2  
SEE DWG#5

SEE DWG#8



844-994-4448

JOB NO. HIDDEN HILLS - PHASE 5

LOCATION HIDDEN HILLS, CA

ENGR JOY PADILLA

TEL 909-457-8448

SUBJECT

**TRENCH ALIGNMENT**

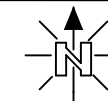
TYPE OF CONST

**DUCT PLACEMENT**

DWG 6 OF 20

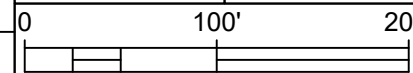
VERSION

09/07/2023

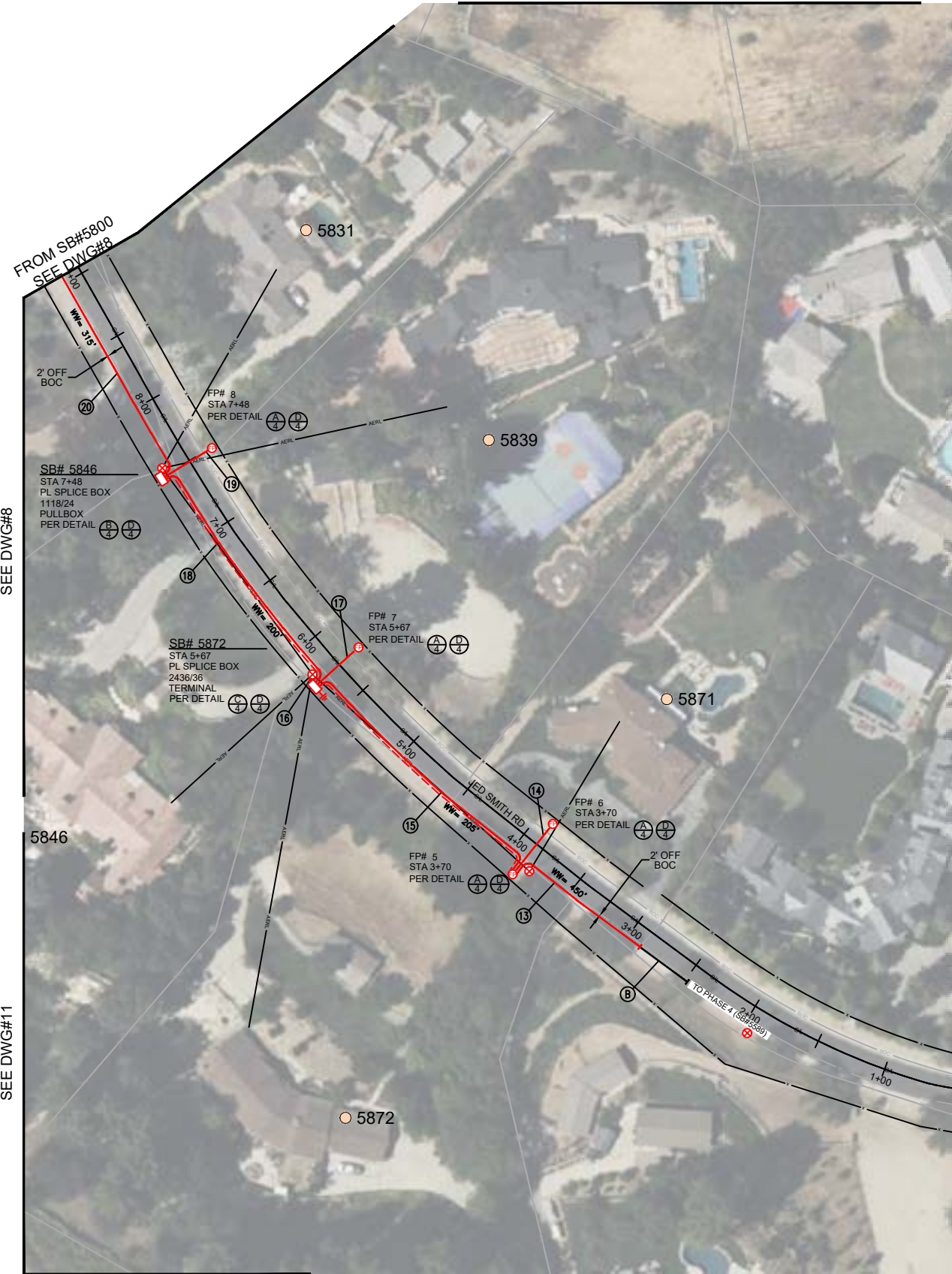


**SHEET INDEX**

- DWG 1 - COVER PAGE
- DWG 2 - BILL OF MATERIALS
- DWG 3 - TYPICAL CONST. DETAILS
- DWG 4 - TYPICAL BOX DETAILS
- DWG 5 TO 20 - CONDUIT DESIGN



SEE DWG#6



**PLACEMENT NOTES:**

- ⓑ TIC MARK 15+16 TO  
START PH 5 2+88  
PL'D ON PHASE 4  
Ⓞ 1.25" SDR11  
(CALLOUT #32 DWG#7)
- ⓓ START PH5 2+88 TO  
FP#5 3+70  
PLACE 110'  
Ⓞ 1.25" SDR11  
PER DETAIL ⓐ/ⓓ
- ⓔ FP#5 3+70 TO  
FP#6 3+70  
PLACE 45'  
Ⓞ 1.25" SDR11  
PER DETAIL ⓐ/ⓓ/ⓙ
- ⓕ FP#5 3+70 TO  
SB#5872 5+67  
PLACE 205'  
Ⓞ 1.25" SDR11  
PER DETAIL ⓐ/ⓓ
- ⓖ SB#5872 5+67 TO  
RISER POLE  
PLACE 10'  
Ⓞ 1.25" SDR11  
PER DETAIL ⓐ/ⓓ/Ⓚ
- ⓗ SB#5872 5+67 TO  
FP#7 5+67  
PLACE 45'  
Ⓞ 1.25" SDR11  
PER DETAIL ⓐ/ⓓ/ⓙ
- ⓘ SB#5872 5+67 TO  
SB#5846 7+48  
PLACE 200'  
Ⓞ 1.25" SDR11  
PER DETAIL ⓐ/ⓓ
- ⓙ SB#5846 7+48 TO  
FP#8 7+48  
PLACE 45'  
Ⓞ 1.25" SDR11  
PER DETAIL ⓐ/ⓓ/ⓙ
- ⓚ SB#5846 7+48 TO  
SB#5800 10+52  
PLACE 315'  
Ⓞ 1.25" SDR11  
PER DETAIL ⓐ/ⓓ

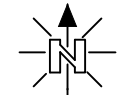
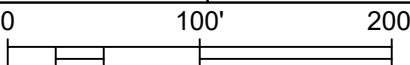
SEE DWG#8

SEE DWG#11



JOB NO. HIDDEN HILLS - PHASE 5  
 LOCATION HIDDEN HILLS, CA  
 ENGR JOY PADILLA TEL 909-457-8448

SUBJECT TRENCH ALIGNMENT  
 TYPE OF CONST DUCT PLACEMENT  
 DWG 7 OF 20

VERSION 09/07/2023  
  


SHEET INDEX	
DWG 1 - COVER PAGE	
DWG 2 - BILL OF MATERIALS	
DWG 3 - TYPICAL CONST. DETAILS	
DWG 4 - TYPICAL BOX DETAILS	
DWG 5 TO 20 - CONDUIT DESIGN	

SEE DWG#6



SEE DWG#11

**PLACEMENT NOTES:**

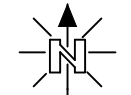
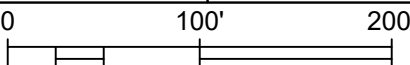
- ⑳ SB#5846 7+48 TO  
SB#5800 10+52  
PL'D ON DWG#7  
Ⓢ 1.25" SDR11  
PER DETAIL ⓐ/Ⓝ
- ㉑ SB#5800 10+52 TO  
POLE#1112326E  
PLACE 70'  
Ⓢ 1.25" SDR11  
PER DETAIL ⓐ/Ⓝ/Ⓚ/Ⓝ
- ㉒ SB#5800 10+52 TO  
FP#9 10+52  
PLACE 45'  
Ⓢ 1.25" SDR11  
PER DETAIL ⓐ/Ⓝ/Ⓝ/Ⓝ
- ㉓ FP#9 10+52 TO  
SB#5819 13+26  
PLACE 290'  
Ⓢ 1.25" SDR11  
PER DETAIL ⓐ/Ⓝ
- ㉔ SB#5819 13+26 TO  
FP#10 13+26  
PLACE 45'  
Ⓢ 1.25" SDR11  
PER DETAIL ⓐ/Ⓝ/Ⓝ/Ⓝ
- ㉕ SB#5819 13+26 TO  
SB#5727 17+35  
PLACE 432'  
Ⓢ 1.25" SDR11  
PER DETAIL ⓐ/Ⓝ

**SCE UNDERGROUNDING NOTE:**  
  
IF THE SCE UNDERGROUNDING PROJECT PRECEDES THE HIDDEN HILLS FTTH PROJECT, PLEASE REFER TO DWG#19 FOR CONSTRUCTION AS THIS PROJECT WILL JOINT TRENCH WITH SCE.



JOB NO. HIDDEN HILLS - PHASE 5  
 LOCATION HIDDEN HILLS, CA  
 ENGR JOY PADILLA TEL 909-457-8448

SUBJECT TRENCH ALIGNMENT  
 TYPE OF CONST DUCT PLACEMENT  
 DWG 8 OF 20

VERSION 09/07/2023  
  


SHEET INDEX	
DWG 1 - COVER PAGE	
DWG 2 - BILL OF MATERIALS	
DWG 3 - TYPICAL CONST. DETAILS	
DWG 4 - TYPICAL BOX DETAILS	
DWG 5 TO 20 - CONDUIT DESIGN	





**PLACEMENT NOTES:**

- 25 SB#5819 13+26 TO SB#5727 17+35  
PL'D ON DWG#8  
Ø 1.25" SDR11  
PER DETAIL (A/3)
- 26 SB#5727 17+35 TO SB#5709 18+51  
PLACE 135'  
Ø 1.25" SDR11  
PER DETAIL (A/3)
- 27 SB#5709 18+51 TO FP#11 18+51  
PLACE 45'  
Ø 1.25" SDR11  
PER DETAIL (A/3) (J/3)
- 28 SB#5709 18+51 TO POLE#151350924  
PLACE 10'  
Ø 1.25" SDR11  
PER DETAIL (A/3) (K/3)
- 29 SB#5709 18+51 TO SB#24907 20+24  
PLACE 190'  
Ø 1.25" SDR11  
PER DETAIL (A/3)
- 30 SB#24907 20+24 TO POLE#1576843E  
PLACE 10'  
Ø 1.25" SDR11  
PER DETAIL (A/3) (K/3)
- 31 SB#24907 20+24 TO FP#12 20+24  
PLACE 45'  
Ø 1.25" SDR11  
PER DETAIL (A/3) (J/3)
- 32 SB#24907 20+24 TO SB#5666 21+63  
PLACE 162'  
Ø 1.25" SDR11  
PER DETAIL (A/3)
- 33 SB#5666 21+63 TIC MARK 21+79  
PLACE 30'  
(4) 1.25" SDR11  
PER DETAIL (A/3)
- 34 TIC MARK 21+79 SB#24921 1+30  
PLACE 125'  
Ø 1.25" SDR11  
PER DETAIL (A/3)
- 35 SB#24921 1+30 TO POLE#1576645E  
PLACE 10'  
Ø 1.25" SDR11  
PER DETAIL (A/3) (K/3)
- 36 SB#24921 1+30 TO FP#13 1+30  
PLACE 45'  
Ø 1.25" SDR11  
PER DETAIL (A/3) (J/3)
- 37 SB#24921 1+30 TO FP#14 3+08  
PLACE 190'  
Ø 1.25" SDR11  
PER DETAIL (A/3)
- 38 FP#14 3+08 TO FP#15 3+08  
PLACE 45'  
Ø 1.25" SDR11  
PER DETAIL (A/3) (J/3)
- 39 FP#14 3+08 TO SB#24933 4+00  
PLACE 100'  
(4) 1.25" SDR11  
PER DETAIL (A/3)
- 40 SB#24933 4+00 TO RISER POLE  
PLACE 10'  
Ø 1.25" SDR11  
PER DETAIL (A/3) (K/3)
- 41 SB#24933 4+00 TO FP#16 4+98  
PLACE 105'  
(4) 1.25" SDR11  
PER DETAIL (A/3)
- 42 FP#16 4+98 TO FP#17 4+98  
PLACE 45'  
Ø 1.25" SDR11  
PER DETAIL (A/3) (J/3)
- 43 FP#16 4+98 TO SB#24961 6+89  
PLACE 200'  
Ø 1.25" SDR11  
PER DETAIL (A/3)
- 44 TIC MARK 21+79 TO SB#5655 23+76  
PLACE 215'  
Ø 1.25" SDR11  
PER DETAIL (A/3) (J/3)
- 45 SB#5655 23+76 TO POLE#1576608E  
PLACE 10'  
Ø 1.25" SDR11  
PER DETAIL (A/3) (K/3)
- 46 SB#5655 23+76 TO FP#19 23+76  
PLACE 45'  
Ø 1.25" SDR11  
PER DETAIL (A/3) (J/3)
- 47 SB#5655 23+76 TO SB#24915 25+96  
PLACE 240'  
Ø 1.25" SDR11  
PER DETAIL (A/3)
- 48 SB#5655 23+76 TO FP#20 25+96  
PLACE 45'  
Ø 1.25" SDR11  
PER DETAIL (A/3) (J/3)
- 49 SB#5655 23+76 TO TIC MARK 26+61  
PLACE 75'  
(4) 1.25" SDR11  
PER DETAIL (A/3)
- 50 SB#5655 23+76 TO SB#24915 25+96  
PLACE 240'  
Ø 1.25" SDR11  
PER DETAIL (A/3)

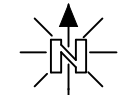
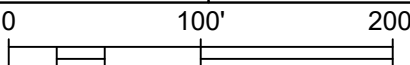
**SCE UNDERGROUNDING NOTE:**

IF THE SCE UNDERGROUNDING PROJECT PRECEDES THE HIDDEN HILLS FTTH PROJECT, PLEASE REFER TO DWG#20 FOR CONSTRUCTION AS THIS PROJECT WILL JOINT TRENCH WITH SCE.



JOB NO. HIDDEN HILLS - PHASE 5  
 LOCATION HIDDEN HILLS, CA  
 ENGR JOY PADILLA TEL 909-457-8448

SUBJECT TRENCH ALIGNMENT  
 TYPE OF CONST DUCT PLACEMENT  
 DWG 9 OF 20

VERSION 09/07/2023  
  


**SHEET INDEX**  
 DWG 1 - COVER PAGE  
 DWG 2 - BILL OF MATERIALS  
 DWG 3 - TYPICAL CONST. DETAILS  
 DWG 4 - TYPICAL BOX DETAILS  
 DWG 5 TO 20 - CONDUIT DESIGN

**PLACEMENT NOTES:**

- ④③ FP#16 4+98 TO  
SB#24961 6+89  
PL'D ON DWG#9  
Ø 1.25" SDR11  
PER DETAIL (A/3)
- ④④ SB#24961 6+89 TO  
FP#18 7+33  
PLACE 90'  
Ø 1.25" SDR11  
PER DETAIL (A/3)



TO SB#  
SEE DWG#10

SEE DWG#15



844-994-4448

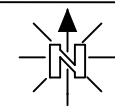
JOB NO. HIDDEN HILLS - PHASE 5  
 LOCATION HIDDEN HILLS, CA  
 ENGR JOY PADILLA TEL 909-457-8448

SUBJECT  
**TRENCH ALIGNMENT**

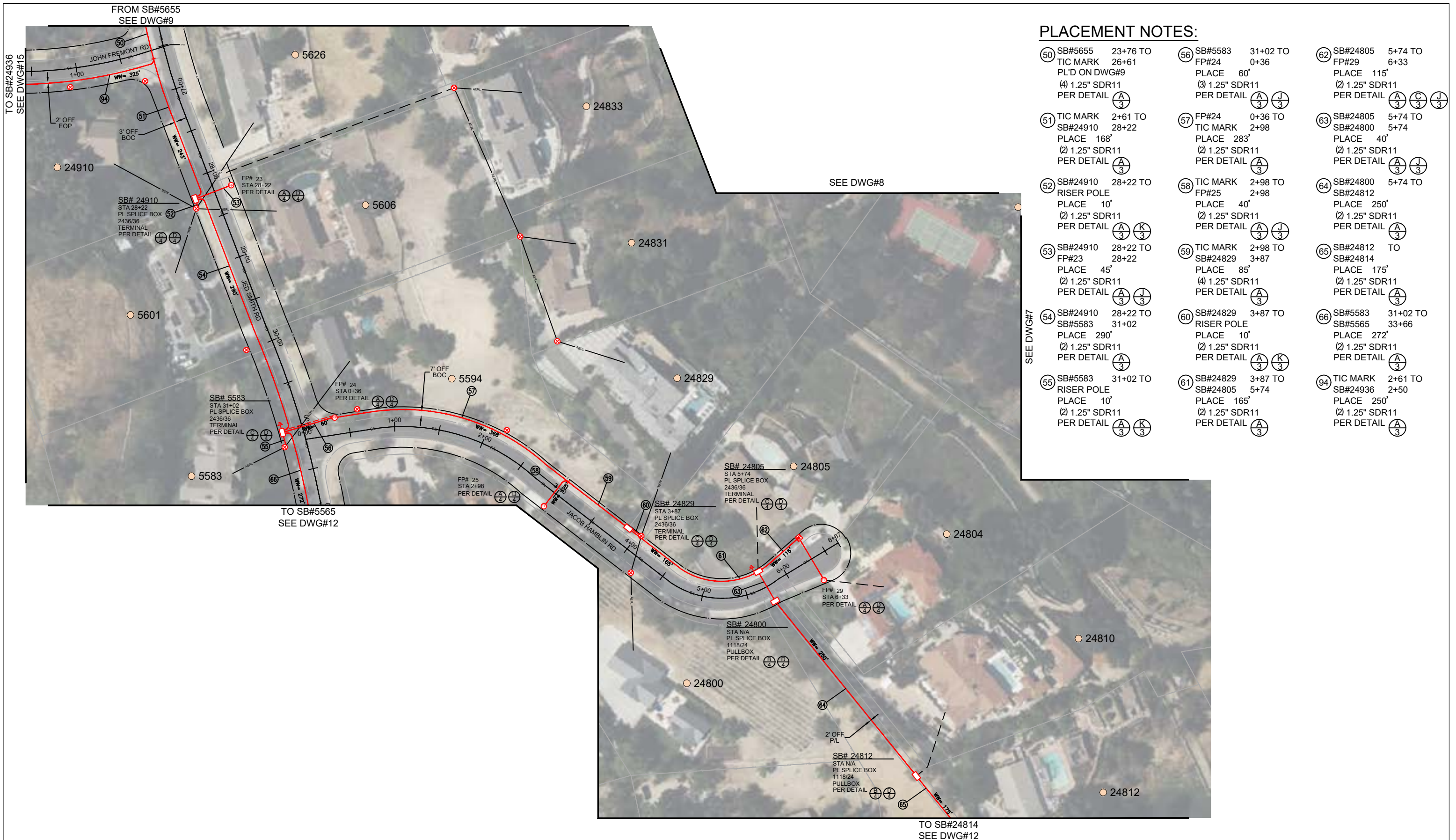
TYPE OF CONST  
**DUCT PLACEMENT**

DWG 10 OF 20

VERSION  
09/07/2023



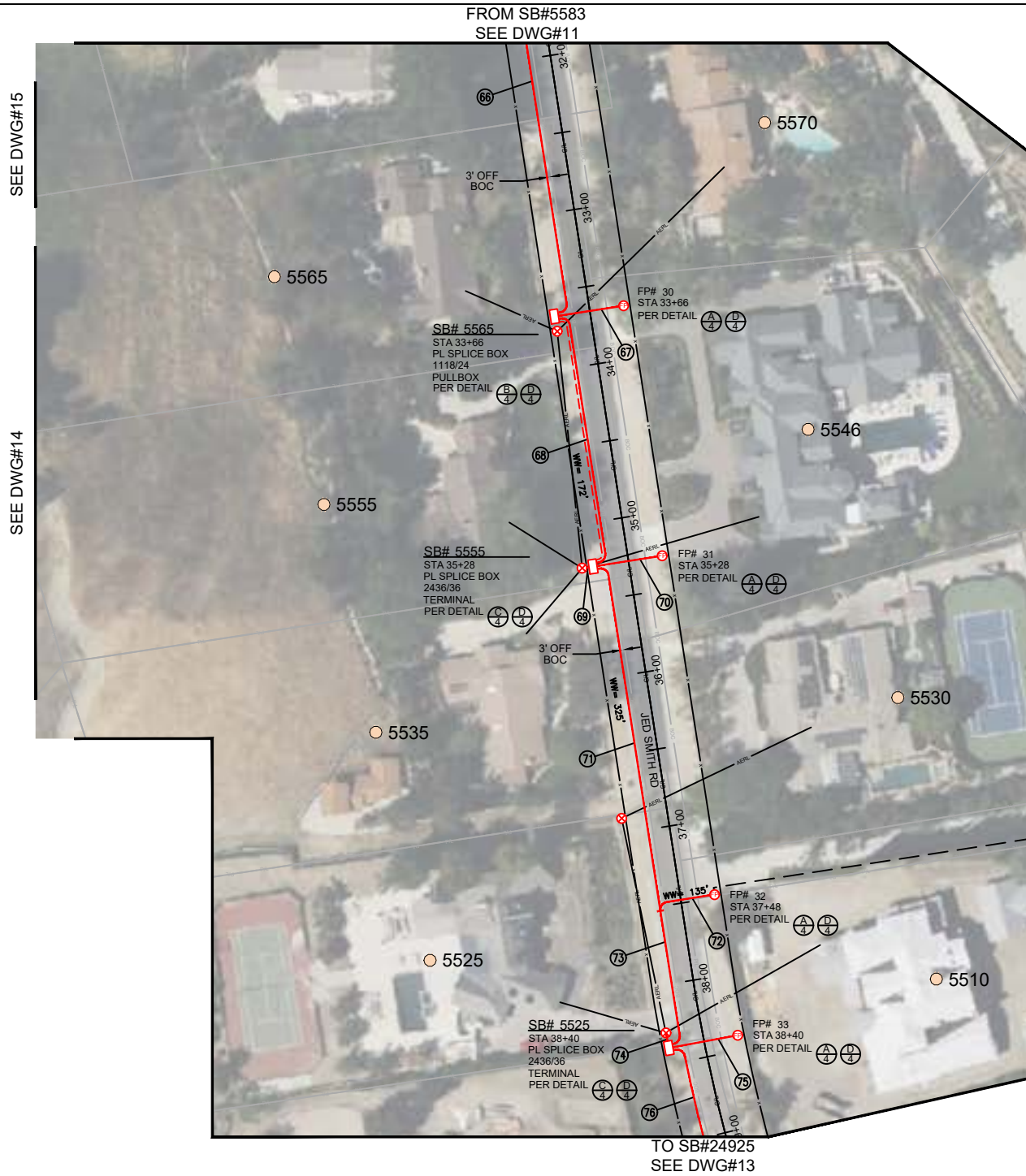
SHEET INDEX	
DWG 1 - COVER PAGE	
DWG 2 - BILL OF MATERIALS	
DWG 3 - TYPICAL CONST. DETAILS	
DWG 4 - TYPICAL BOX DETAILS	
DWG 5 TO 20 - CONDUIT DESIGN	



**PLACEMENT NOTES:**

50	SB#5655 TIC MARK PL'D ON DWG#9 (4) 1.25" SDR11 PER DETAIL	23+76 TO 26+61	56	SB#5583 FP#24 PLACE (3) 1.25" SDR11 PER DETAIL	31+02 TO 0+36 60'	62	SB#24805 FP#29 PLACE (2) 1.25" SDR11 PER DETAIL	5+74 TO 6+33 115'
51	TIC MARK SB#24910 PLACE (2) 1.25" SDR11 PER DETAIL	2+61 TO 28+22 168'	57	FP#24 TIC MARK PLACE (2) 1.25" SDR11 PER DETAIL	0+36 TO 2+98 283'	63	SB#24805 SB#24800 PLACE (2) 1.25" SDR11 PER DETAIL	5+74 TO 5+74 40'
52	SB#24910 RISER POLE PLACE (2) 1.25" SDR11 PER DETAIL	28+22 TO 10' 10'	58	TIC MARK FP#25 PLACE (2) 1.25" SDR11 PER DETAIL	2+98 TO 2+98 40'	64	SB#24800 SB#24812 PLACE (2) 1.25" SDR11 PER DETAIL	5+74 TO SB#24812 250'
53	SB#24910 FP#23 PLACE (2) 1.25" SDR11 PER DETAIL	28+22 TO 28+22 45'	59	TIC MARK SB#24829 PLACE (4) 1.25" SDR11 PER DETAIL	2+98 TO 3+87 85'	65	SB#24812 TO SB#24814 PLACE (2) 1.25" SDR11 PER DETAIL	175'
54	SB#24910 SB#5583 PLACE (2) 1.25" SDR11 PER DETAIL	28+22 TO 31+02 290'	60	SB#24829 RISER POLE PLACE (2) 1.25" SDR11 PER DETAIL	3+87 TO 10' 10'	66	SB#5583 SB#5565 PLACE (2) 1.25" SDR11 PER DETAIL	31+02 TO 33+66 272'
55	SB#5583 RISER POLE PLACE (2) 1.25" SDR11 PER DETAIL	31+02 TO 10' 10'	61	SB#24829 SB#24805 PLACE (2) 1.25" SDR11 PER DETAIL	3+87 TO 5+74 165'	94	TIC MARK SB#24936 PLACE (2) 1.25" SDR11 PER DETAIL	2+61 TO 2+50 250'

<p>844-994-4448</p>	JOB NO. <u>HIDDEN HILLS - PHASE 5</u> LOCATION <u>HIDDEN HILLS, CA</u> ENGR <u>JOY PADILLA</u> TEL <u>909-457-8448</u>	SUBJECT <b>TRENCH ALIGNMENT</b> TYPE OF CONST <b>DUCT PLACEMENT</b> DWG <u>11</u> OF <u>20</u>	VERSION 09/07/2023 	<b>SHEET INDEX</b> DWG 1 - COVER PAGE DWG 2 - BILL OF MATERIALS DWG 3 - TYPICAL CONST. DETAILS DWG 4 - TYPICAL BOX DETAILS DWG 5 TO 20 - CONDUIT DESIGN



SEE DWG#15

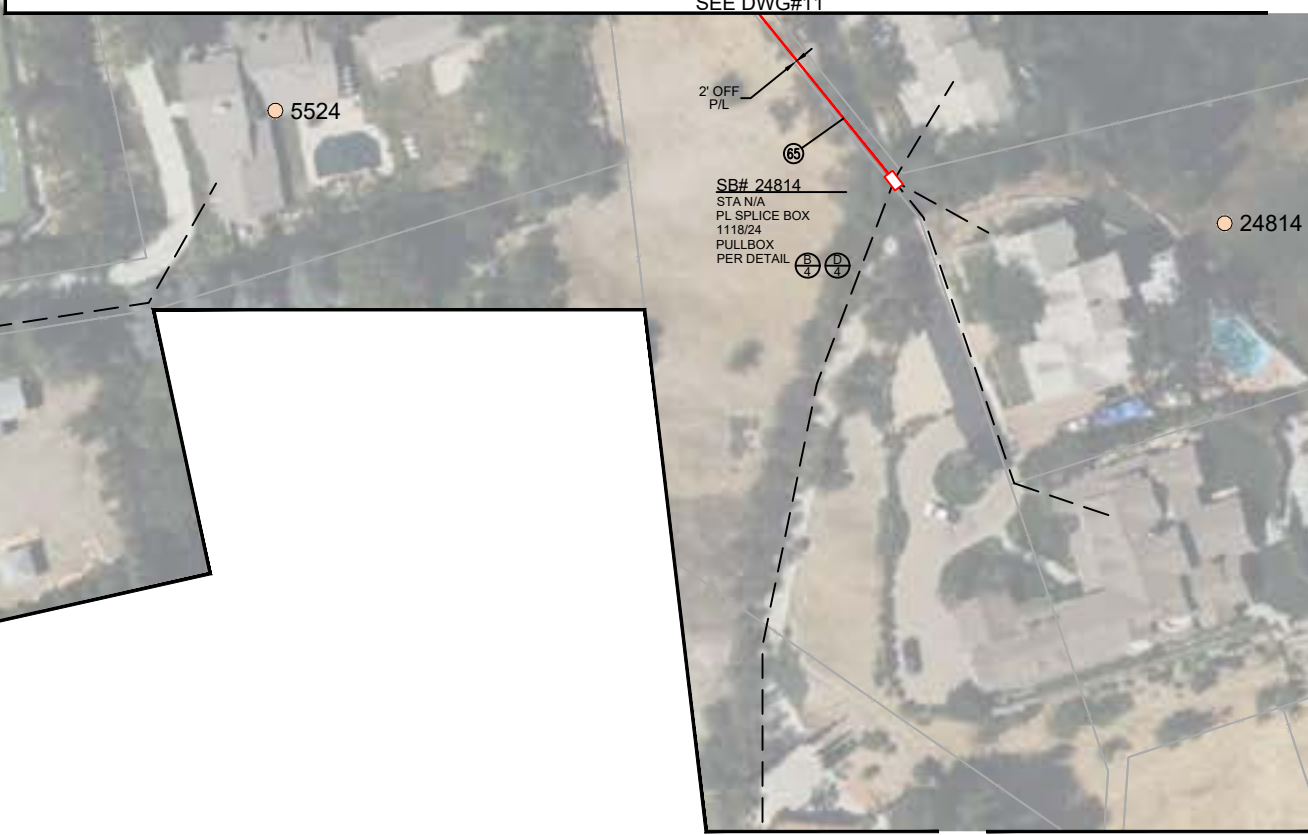
SEE DWG#14

FROM SB#5583  
SEE DWG#11

TO SB#24925  
SEE DWG#13

**PLACEMENT NOTES:**

- (65) SB#24812 TO SB#24814 PL'D ON DWG#11 (2) 1.25" SDR11 PER DETAIL (A/3)
- (66) SB#5583 31+02 TO SB#5565 33+66 PL'D ON DWG#11 (2) 1.25" SDR11 PER DETAIL (A/3)
- (67) SB#5565 33+66 TO FP#30 33+66 PLACE 40' (2) 1.25" SDR11 PER DETAIL (A/3) (J/3)
- (68) SB#5565 33+66 TO SB#5555 35+28 PLACE 172' (4) 1.25" SDR11 PER DETAIL (A/3)
- (69) SB#5555 35+28 TO RISER POLE PLACE 10' (2) 1.25" SDR11 PER DETAIL (A/3) (K/3)
- (70) SB#5555 35+28 TO FP#31 35+28 PLACE 40' (2) 1.25" SDR11 PER DETAIL (A/3) (J/3)
- (71) SB#5555 35+28 TO TIC MARK 37+48 PLACE 230' (2) 1.25" SDR11 PER DETAIL (A/3)
- (72) TIC MARK 37+48 TO FP#32 37+48 PLACE 40' (2) 1.25" SDR11 PER DETAIL (A/3) (J/3)
- (73) TIC MARK 37+48 TO SB#5525 38+40 PLACE 95' (4) 1.25" SDR11 PER DETAIL (A/3)
- (74) SB#5525 38+40 TO RISER POLE PLACE 10' (2) 1.25" SDR11 PER DETAIL (A/3) (K/3)
- (75) SB#5525 38+40 TO FP#33 38+40 PLACE 40' (2) 1.25" SDR11 PER DETAIL (A/3) (J/3)
- (76) SB#5525 38+40 TO SB#24925 39+82 PLACE 155' (2) 1.25" SDR11 PER DETAIL (A/3)



FROM SB#24812  
SEE DWG#11

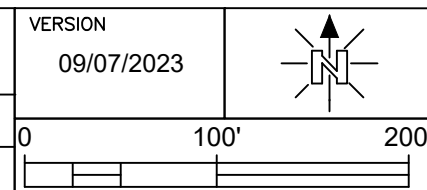
SEE DWG#17



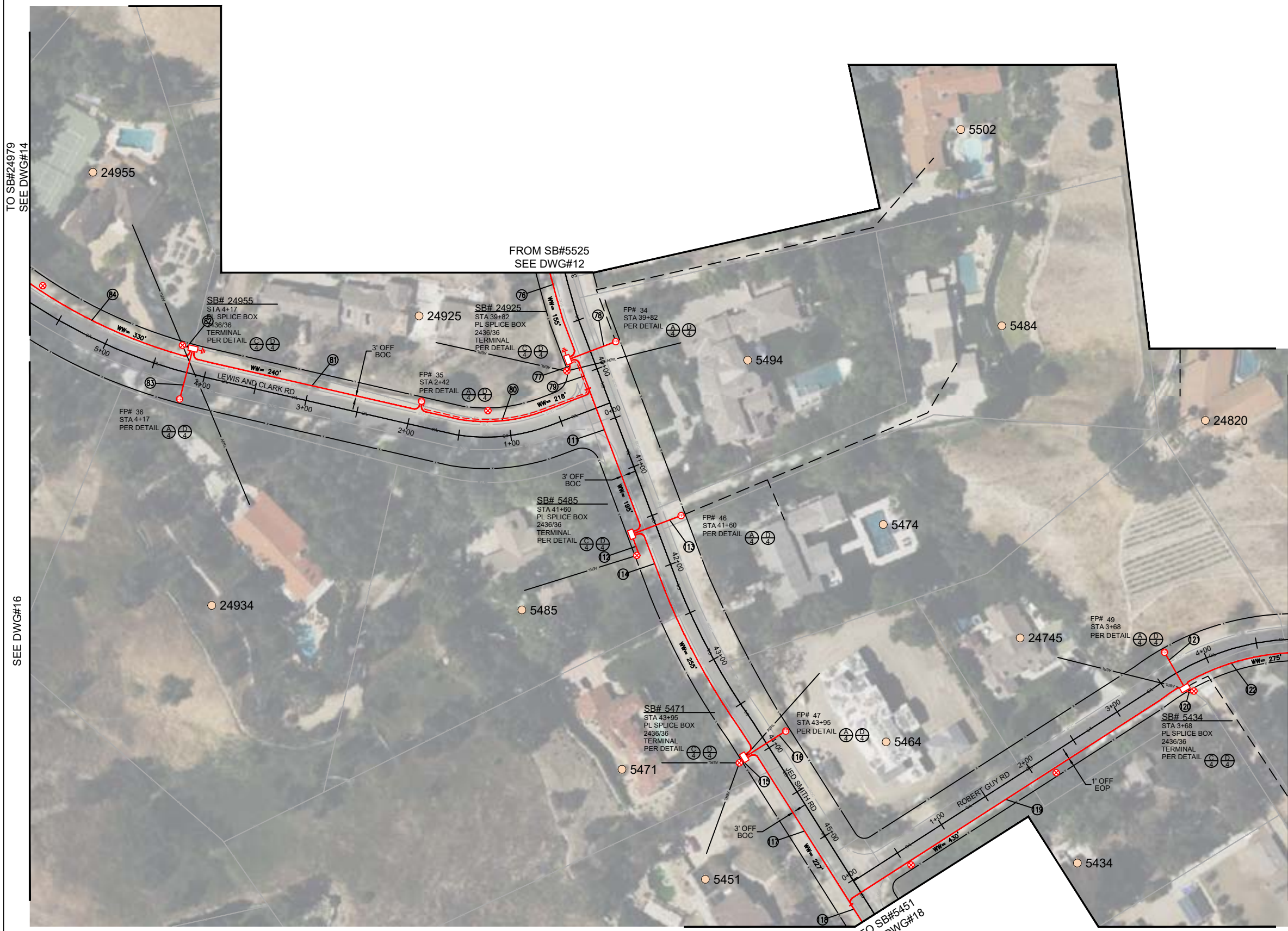
844-994-4448

JOB NO. HIDDEN HILLS - PHASE 5  
 LOCATION HIDDEN HILLS, CA  
 ENGR JOY PADILLA TEL 909-457-8448

SUBJECT TRENCH ALIGNMENT  
 TYPE OF CONST DUCT PLACEMENT  
 DWG 12 OF 20



SHEET INDEX	
DWG 1 - COVER PAGE	
DWG 2 - BILL OF MATERIALS	
DWG 3 - TYPICAL CONST. DETAILS	
DWG 4 - TYPICAL BOX DETAILS	
DWG 5 TO 20 - CONDUIT DESIGN	

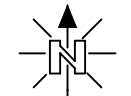
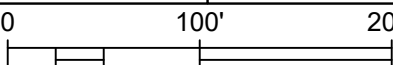


- PLACEMENT NOTES:**
- 76 SB#5525 38+40 TO SB#24925 39+82 PL'D ON DWG#12 (2) 1.25" SDR11 PER DETAIL (A/3)
  - 77 SB#24925 39+82 TO RISER POLE PLACE 10' (2) 1.25" SDR11 PER DETAIL (A/3) (K/3)
  - 78 SB#24925 39+82 TO FP#34 39+82 PLACE 50' (2) 1.25" SDR11 PER DETAIL (A/3)
  - 79 SB#24925 39+82 TO TIC MARK 40+15 PLACE 40' (5) 1.25" SDR11 PER DETAIL (A/3)
  - 80 TIC MARK 40+15 TO FP#35 2+42 PLACE 178' (3) 1.25" SDR11 PER DETAIL (A/3)
  - 81 FP#35 2+42 TO SB#24955 4+17 PLACE 240' (2) 1.25" SDR11 PER DETAIL (A/3)
  - 82 SB#24955 4+17 TO RISER POLE PLACE 10' (2) 1.25" SDR11 PER DETAIL (A/3) (K/3)
  - 83 SB#24955 4+17 TO FP#36 4+17 PLACE 50' (2) 1.25" SDR11 PER DETAIL (A/3) (J/3)
  - 84 SB#24955 4+17 TO SB#24979 7+44 PLACE 330' (2) 1.25" SDR11 PER DETAIL (A/3)
  - 11 TIC MARK 40+15 TO SB#5485 41+60 PLACE 152' (2) 1.25" SDR11 PER DETAIL (A/3) (J/3)
  - 11a SB#5485 41+60 TO RISER POLE PLACE 10' (2) 1.25" SDR11 PER DETAIL (A/3) (K/3)
  - 11b SB#5485 41+60 TO SB#5471 43+95 PLACE 225' (2) 1.25" SDR11 PER DETAIL (A/3)
  - 11c SB#5471 43+95 TO RISER POLE PLACE 10' (2) 1.25" SDR11 PER DETAIL (A/3) (K/3)
  - 11d SB#5471 43+95 TO FP#47 43+95 PLACE 50' (2) 1.25" SDR11 PER DETAIL (A/3) (J/3)
  - 11e SB#5471 43+95 TO TIC MARK 45+69 TO SB#5434 3+68 PLACE 385' (2) 1.25" SDR11 PER DETAIL (A/3) (J/3)
  - 11f SB#5434 3+68 TO RISER POLE PLACE 10' (2) 1.25" SDR11 PER DETAIL (A/3) (K/3)
  - 11g SB#5434 3+68 TO FP#49 3+68 PLACE 40' (2) 1.25" SDR11 PER DETAIL (A/3) (J/3)
  - 11h SB#5434 3+68 TO FP#50 6+44 PLACE 275' (2) 1.25" SDR11 PER DETAIL (A/3)
  - 11i SB#5485 41+60 TO RISER POLE PLACE 10' (2) 1.25" SDR11 PER DETAIL (A/3) (K/3)



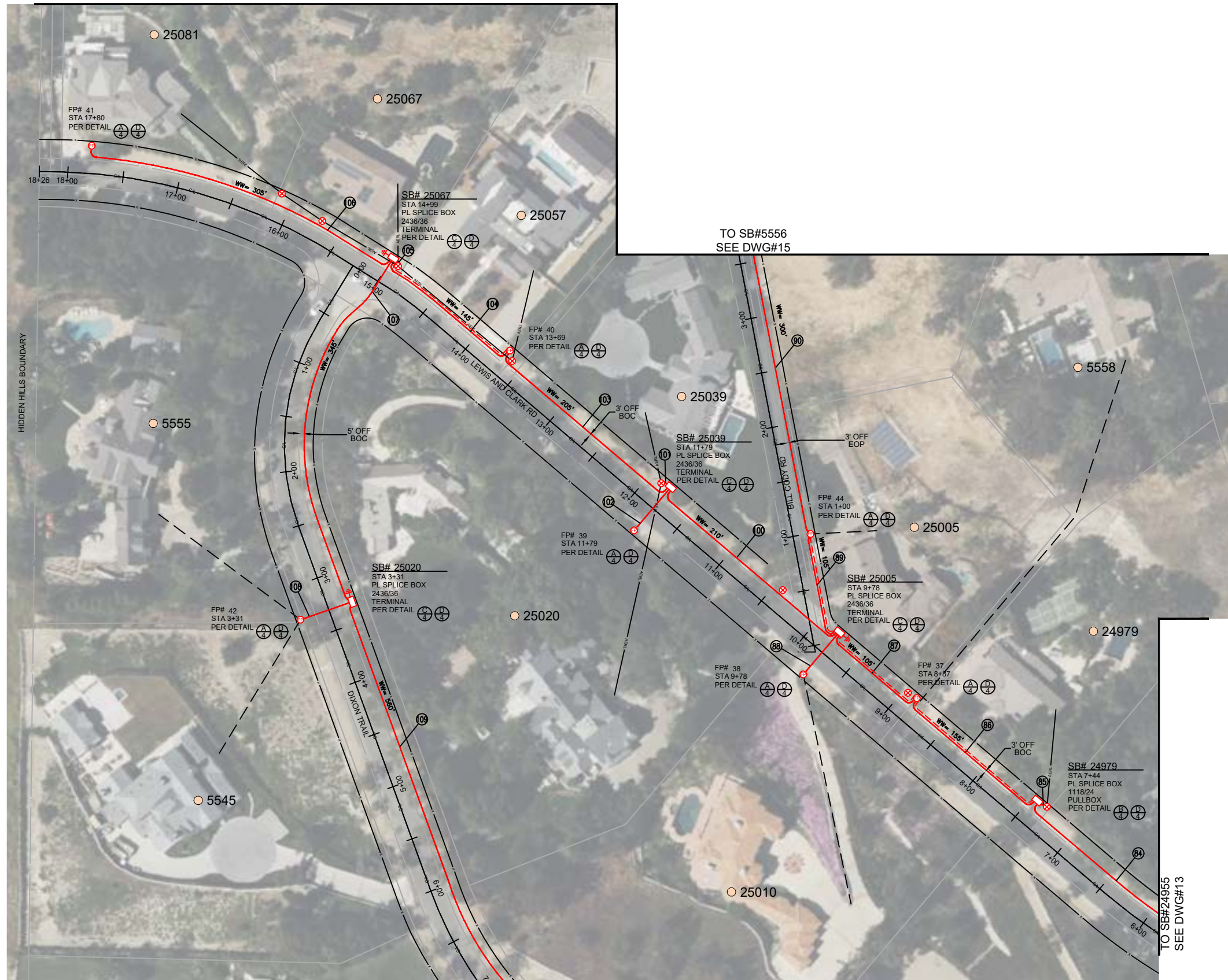
JOB NO. HIDDEN HILLS - PHASE 5  
 LOCATION HIDDEN HILLS, CA  
 ENGR JOY PADILLA TEL 909-457-8448

SUBJECT TRENCH ALIGNMENT  
 TYPE OF CONST DUCT PLACEMENT  
 DWG 13 OF 20

VERSION 09/07/2023  
  


**SHEET INDEX**

DWG 1 - COVER PAGE
DWG 2 - BILL OF MATERIALS
DWG 3 - TYPICAL CONST. DETAILS
DWG 4 - TYPICAL BOX DETAILS
DWG 5 TO 20 - CONDUIT DESIGN



**PLACEMENT NOTES:**

- |  |  |
|--|--|
| 84) SB#24955 4+17 TO<br>SB#24979 7+44<br>PL'D ON DWG#13<br>(2) 1.25" SDR11<br>PER DETAIL (A/3) | 102) SB#25039 11+79 TO<br>FP#39 11+79<br>PLACE 50'<br>(2) 1.25" SDR11<br>PER DETAIL (A/3)    |
| 85) SB#24979 STA 7+44 TO<br>RISER POLE<br>PLACE 10'<br>(2) 1.25" SDR11<br>PER DETAIL (A/3)     | 103) SB#25039 11+79 TO<br>FP#40 13+69<br>PLACE 205'<br>(2) 1.25" SDR11<br>PER DETAIL (A/3)   |
| 86) SB#24979 STA 7+44 TO<br>FP#37 8+87<br>PLACE 155'<br>(3) 1.25" SDR11<br>PER DETAIL (A/3)    | 104) FP#40 13+69 TO<br>SB#25067 14+99<br>(3) 1.25" SDR11<br>PER DETAIL (A/3)                 |
| 87) FP#37 8+87 TO<br>SB#25005 9+78<br>PLACE 105'<br>(4) 1.25" SDR11<br>PER DETAIL (A/3)        | 105) SB#25067 14+99 TO<br>RISER POLE<br>PLACE 10'<br>(2) 1.25" SDR11<br>PER DETAIL (A/3)     |
| 88) SB#25005 9+78 TO<br>FP#38 9+78<br>PLACE 50'<br>(2) 1.25" SDR11<br>PER DETAIL (A/3)         | 106) SB#25067 14+99 TO<br>FP#41 17+80<br>PLACE 305'<br>(2) 1.25" SDR11<br>PER DETAIL (A/3)   |
| 89) SB#25005 9+78 TO<br>FP#44 1+00<br>PLACE 105'<br>(3) 1.25" SDR11<br>PER DETAIL (A/3)        | 107) SB#25067 14+99 TO<br>SB#25020 3+31<br>PLACE 345'<br>(2) 1.25" SDR11<br>PER DETAIL (A/3) |
| 90) FP#44 1+00 TO<br>SB#5556 3+99<br>PLACE 300'<br>(2) 1.25" SDR11<br>PER DETAIL (A/3)         | 108) SB#25020 3+31 TO<br>FP#42 3+31<br>PLACE 50'<br>(2) 1.25" SDR11<br>PER DETAIL (A/3)      |
| 100) SB#25005 9+78 TO<br>SB#25039 11+79<br>PLACE 210'<br>(2) 1.25" SDR11<br>PER DETAIL (A/3)   | 109) SB#25020 3+31 TO<br>SB#5480 8+76<br>PLACE 560'<br>(2) 1.25" SDR11<br>PER DETAIL (A/3)   |
| 101) SB#25039 11+79 TO<br>RISER POLE<br>PLACE 10'<br>(2) 1.25" SDR11<br>PER DETAIL (A/3)       |  |



JOB NO. HIDDEN HILLS - PHASE 5  
 LOCATION HIDDEN HILLS, CA  
 ENGR JOY PADILLA TEL 909-457-8448

SUBJECT  
**TRENCH ALIGNMENT**

TYPE OF CONST  
**DUCT PLACEMENT**

DWG 14 OF 20

VERSION  
09/07/2023

**SHEET INDEX**

DWG 1 - COVER PAGE  
 DWG 2 - BILL OF MATERIALS  
 DWG 3 - TYPICAL CONST. DETAILS  
 DWG 4 - TYPICAL BOX DETAILS  
 DWG 5 TO 20 - CONDUIT DESIGN

SEE DWG#10

SEE DWG#9



**PLACEMENT NOTES:**

- 90 FP#44 1+00 TO SB#5556 3+99 PL'D ON DWG#14 (2) 1.25" SDR11 PER DETAIL (A/3)
- 91 SB#5556 3+99 TO SB#5575 7+68 PLACE 390' (2) 1.25" SDR11 PER DETAIL (A/3) (C/3) (J/3)
- 92 SB#5575 7+68 TO FP#45 7+68 PLACE 40' (2) 1.25" SDR11 PER DETAIL (A/3) (J/3)
- 93 SB#5575 7+68 TO SB#5580 11+55 PLACE 450' (2) 1.25" SDR11 PER DETAIL (A/3)
- 94 TIC MARK 2+61 TO SB#24936 2+50 PL'D ON DWG#11 (2) 1.25" SDR11 PER DETAIL (A/3)
- 95 SB#24936 2+50 TO RISER POLE PLACE 10' (2) 1.25" SDR11 PER DETAIL (A/3) (K/3)
- 96 SB#24936 2+50 TO FP#21 2+50 PLACE 40' (2) 1.25" SDR11 PER DETAIL (A/3) (J/3)
- 97 SB#24936 2+50 TO FP#22 5+85 PLACE 338' (2) 1.25" SDR11 PER DETAIL (A/3)
- 98 FP#22 5+85 TO SB#24959 5+93 PLACE 55' (3) 1.25" SDR11 PER DETAIL (A/3)
- 99 SB#24959 5+93 TO RISER POLE PLACE 40' (2) 1.25" SDR11 PER DETAIL (A/3) (K/3)

FROM SB#5565  
SEE DWG#11

FROM FP#44  
SEE DWG#14



844-994-4448

JOB NO. HIDDEN HILLS - PHASE 5

LOCATION HIDDEN HILLS, CA

ENGR JOY PADILLA

TEL 909-457-8448

SUBJECT

**TRENCH ALIGNMENT**

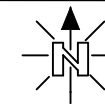
TYPE OF CONST

**DUCT PLACEMENT**

DWG 15 OF 20

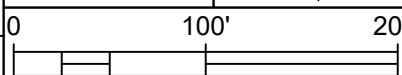
VERSION

09/07/2023



**SHEET INDEX**

- DWG 1 - COVER PAGE
- DWG 2 - BILL OF MATERIALS
- DWG 3 - TYPICAL CONST. DETAILS
- DWG 4 - TYPICAL BOX DETAILS
- DWG 5 TO 20 - CONDUIT DESIGN





**PLACEMENT NOTES:**

- ⑩ SB#25020 3+31 TO  
SB#5480 8+76  
PL'D ON DWG#14  
Ø 1.25" SDR11  
PER DETAIL (A/3)
- ⑪ SB#5480 8+76 TO  
FP#43 8+00  
PLACE 100'  
Ø 1.25" SDR11  
PER DETAIL (A/3)

SEE DWG#13



844-994-4448

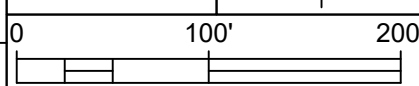
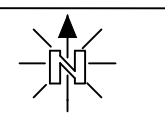
JOB NO. HIDDEN HILLS - PHASE 5  
 LOCATION HIDDEN HILLS, CA  
 ENGR JOY PADILLA TEL 909-457-8448

SUBJECT  
**TRENCH ALIGNMENT**

TYPE OF CONST  
**DUCT PLACEMENT**

DWG 16 OF 20

VERSION  
09/07/2023

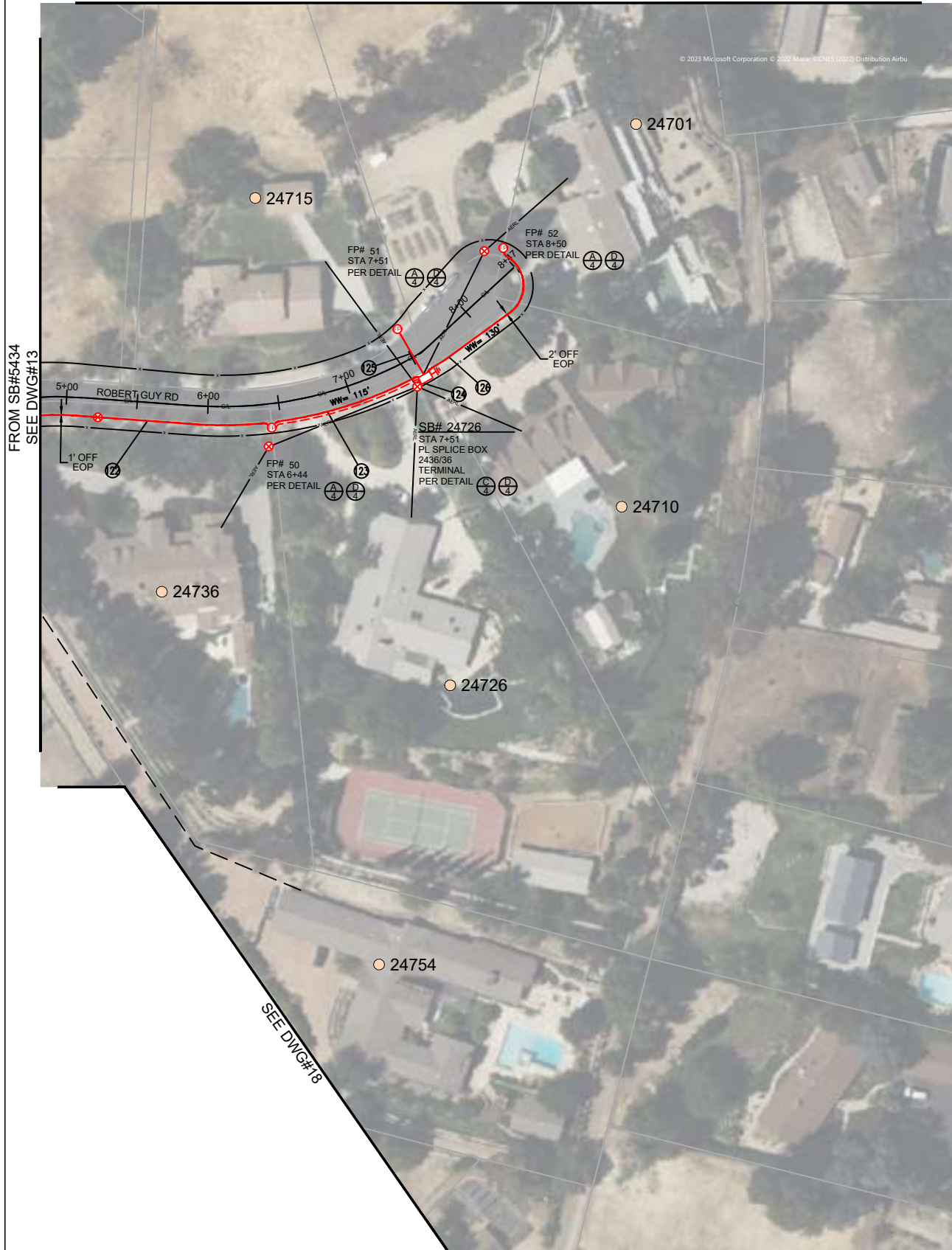


**SHEET INDEX**

- DWG 1 - COVER PAGE
- DWG 2 - BILL OF MATERIALS
- DWG 3 - TYPICAL CONST. DETAILS
- DWG 4 - TYPICAL BOX DETAILS
- DWG 5 TO 20 - CONDUIT DESIGN



SEE DWG#12



**PLACEMENT NOTES:**

- ⑫ SB#5434 3+68 TO  
FP#50 6+44  
PL'D ON DWG#13  
② 1.25" SDR11  
PER DETAIL (A/3)
- ⑫ FP#50 6+44 TO  
SB#24726 7+51  
PLACE 115'  
③ 1.25" SDR11  
PER DETAIL (A/3)
- ⑫ SB#24726 7+51 TO  
RISER POLE  
PLACE 10'  
② 1.25" SDR11  
PER DETAIL (A/3) (K/3)
- ⑫ SB#24726 7+51 TO  
FP#51 7+51  
PLACE 40'  
② 1.25" SDR11  
PER DETAIL (A/3) (J/3)
- ⑫ SB#24726 7+51 TO  
FP#52 8+50  
PLACE 130'  
② 1.25" SDR11  
PER DETAIL (A/3)

FROM SB#5434  
SEE DWG#13

SEE DWG#18



JOB NO. HIDDEN HILLS - PHASE 5  
 LOCATION HIDDEN HILLS, CA  
 ENGR JOY PADILLA TEL 909-457-8448

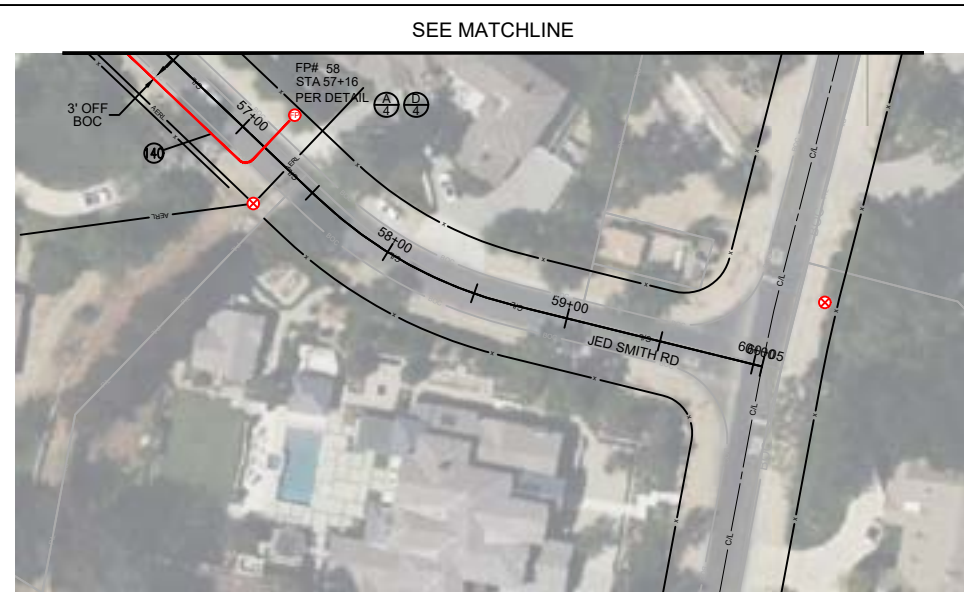
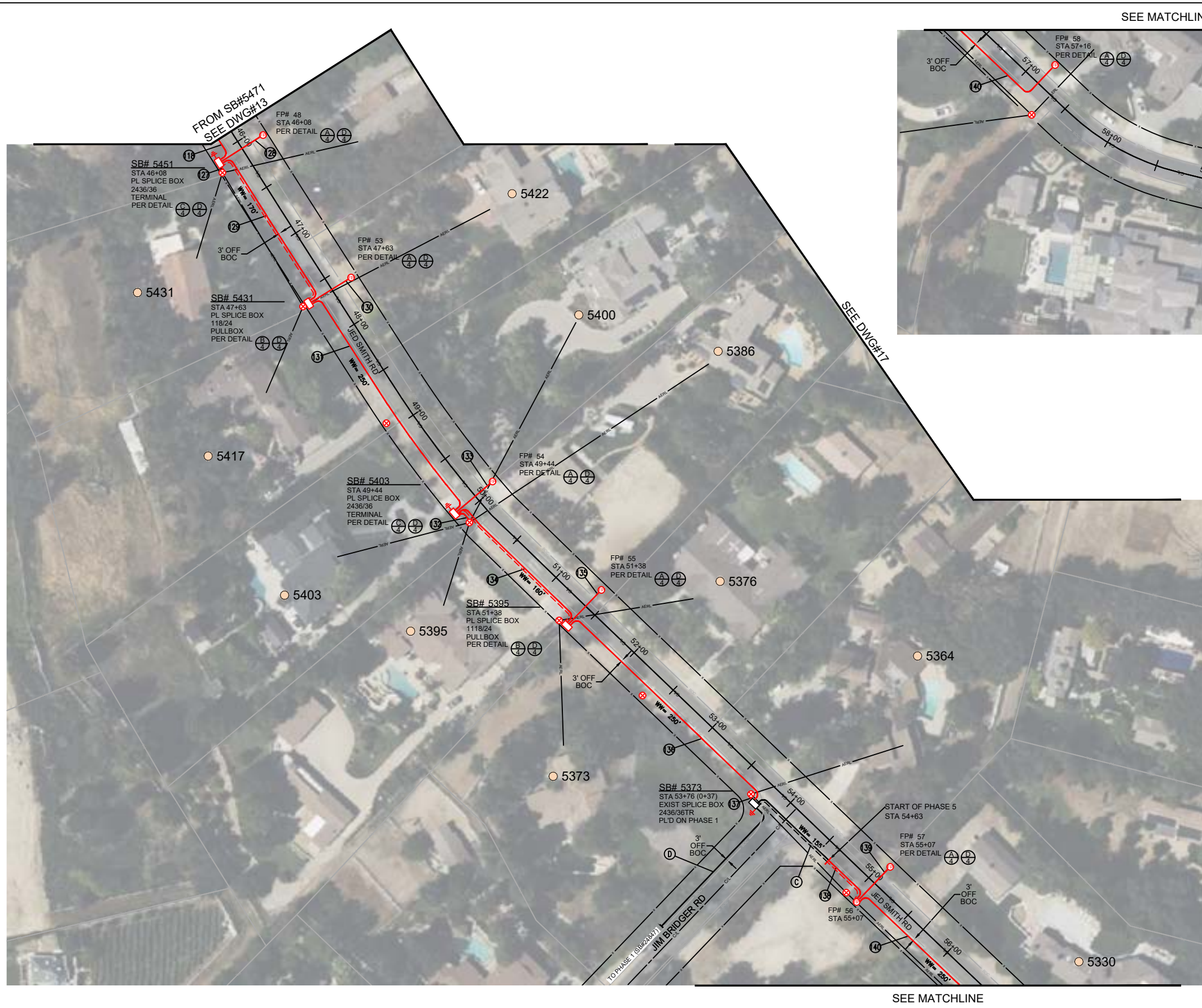
SUBJECT  
**TRENCH ALIGNMENT**

TYPE OF CONST  
**DUCT PLACEMENT**

DWG 17 OF 20

VERSION  
09/07/2023

SHEET INDEX	
DWG 1 - COVER PAGE	
DWG 2 - BILL OF MATERIALS	
DWG 3 - TYPICAL CONST. DETAILS	
DWG 4 - TYPICAL BOX DETAILS	
DWG 5 TO 20 - CONDUIT DESIGN	



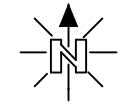
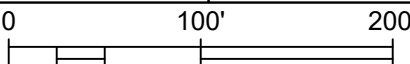
**PLACEMENT NOTES:**

- ①18 TIC MARK 45+69 TO SB#5451 46+08 PL'D ON DWG#13 (4) 1.25" SDR11 PER DETAIL (A/3)
- ①27 SB#5451 46+08 TO RISER POLE PLACE 10' (2) 1.25" SDR11 PER DETAIL (A/3) (K/3)
- ①28 SB#5451 46+08 TO FP#48 46+08 PLACE 50' (2) 1.25" SDR11 PER DETAIL (A/3) (J/3)
- ①29 SB#5451 46+08 TO SB#5431 47+63 PLACE 170' (4) 1.25" SDR11 PER DETAIL (A/3)
- ①30 SB#5431 47+63 TO FP#53 47+63 PLACE 50' (2) 1.25" SDR11 PER DETAIL (A/3) (J/3)
- ①31 SB#5431 47+63 TO SB#5403 49+44 PLACE 250' (2) 1.25" SDR11 PER DETAIL (A/3)
- ①32 SB#5403 49+44 TO RISER POLE PLACE 15' (2) 1.25" SDR11 PER DETAIL (A/3) (K/3)
- ①33 SB#5403 49+44 TO FP#54 49+44 PLACE 50' (2) 1.25" SDR11 PER DETAIL (A/3) (J/3)
- ①34 SB#5403 49+44 TO SB#5395 51+38 PLACE 160' (4) 1.25" SDR11 PER DETAIL (A/3)
- ①35 SB#5395 51+38 TO FP#55 51+38 PLACE 50' (2) 1.25" SDR11 PER DETAIL (A/3) (J/3)
- ①36 SB#5395 51+38 TO SB#5373 53+76 PLACE 250' (2) 1.25" SDR11 PER DETAIL (A/3)
- ①37 SB#5373 53+76 TO RISER POLE PLACE 10' (2) 1.25" SDR11 PER DETAIL (A/3) (K/3)
- ①38 TIC MARK 54+63 TO FP#56 55+07 PLACE 60' (3) 1.25" SDR11 PER DETAIL (A/3)
- ①39 FP#56 55+07 TO FP#57 55+07 PLACE 50' (2) 1.25" SDR11 PER DETAIL (A/3) (J/3)
- ①40 FP#57 55+07 TO FP#58 57+16 PLACE 250' (2) 1.25" SDR11 PER DETAIL (A/3) (J/3)



JOB NO. HIDDEN HILLS - PHASE 5  
 LOCATION HIDDEN HILLS, CA  
 ENGR JOY PADILLA TEL 909-457-8448  
 844-994-4448

SUBJECT TRENCH ALIGNMENT  
 TYPE OF CONST DUCT PLACEMENT  
 DWG 20 OF 20

VERSION 09/07/2023  
  


SHEET INDEX	
DWG 1 - COVER PAGE	
DWG 2 - BILL OF MATERIALS	
DWG 3 - TYPICAL CONST. DETAILS	
DWG 4 - TYPICAL BOX DETAILS	
DWG 5 TO 20 - CONDUIT DESIGN	

SEE DWG#6

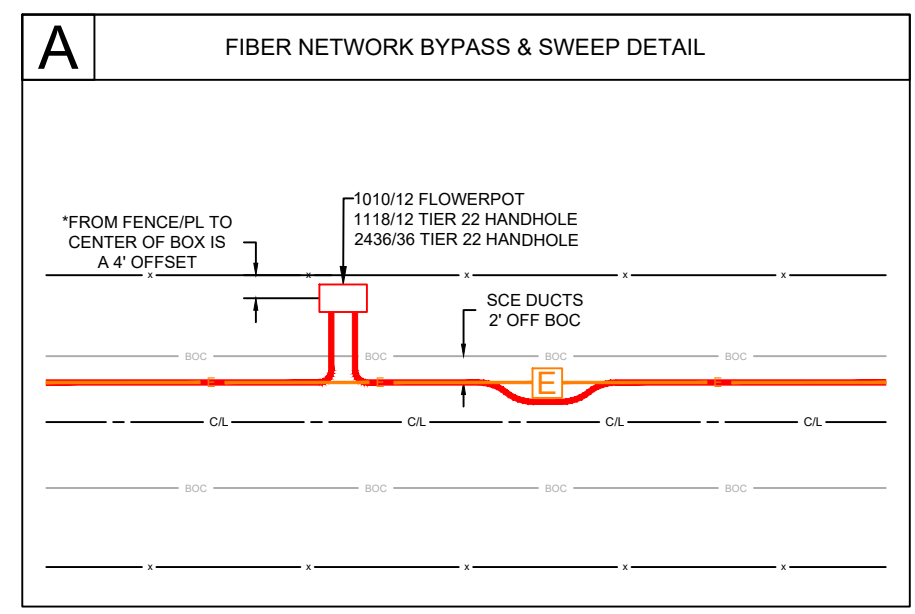


SEE DWG#11

**SCE UNDERGROUNDING NOTE:**  
 IF THE SCE UNDERGROUNDING PROJECT COMES AFTER THE HIDDEN HILLS FTTH PROJECT, PLEASE DISREGARD DWG#19 AND REFER TO DWG#8 FOR CONSTRUCTION

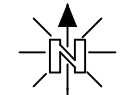
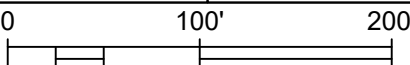
**PLACEMENT NOTES:**

- ⑳ SB#5846 7+48 TO SB#5800 10+52  
 PL'D ON DWG#7  
 ② 1.25" SDR11  
 PER DETAIL (A/3)
- ㉑ SB#5800 10+52 TO POLE#112326E  
 PLACE 70'  
 ② 1.25" SDR11  
 PER DETAIL (A/3) (K/3)
- ㉒ SB#5800 10+52 TO FP#9 10+52  
 PLACE 45'  
 ② 1.25" SDR11  
 PER DETAIL (A/3) (J/3)
- ㉓ FP#9 10+52 TO SB#5819 13+26  
 PLACE 290'  
 ② 1.25" SDR11  
 PER DETAIL (A/3)
- ㉔ SB#5819 13+26 TO FP#10 13+26  
 PLACE 45'  
 ② 1.25" SDR11  
 PER DETAIL (A/3) (J/3)
- ㉕ SB#5819 13+26 TO SB#5727 17+35  
 PLACE 432'  
 ② 1.25" SDR11  
 PER DETAIL (A/3)

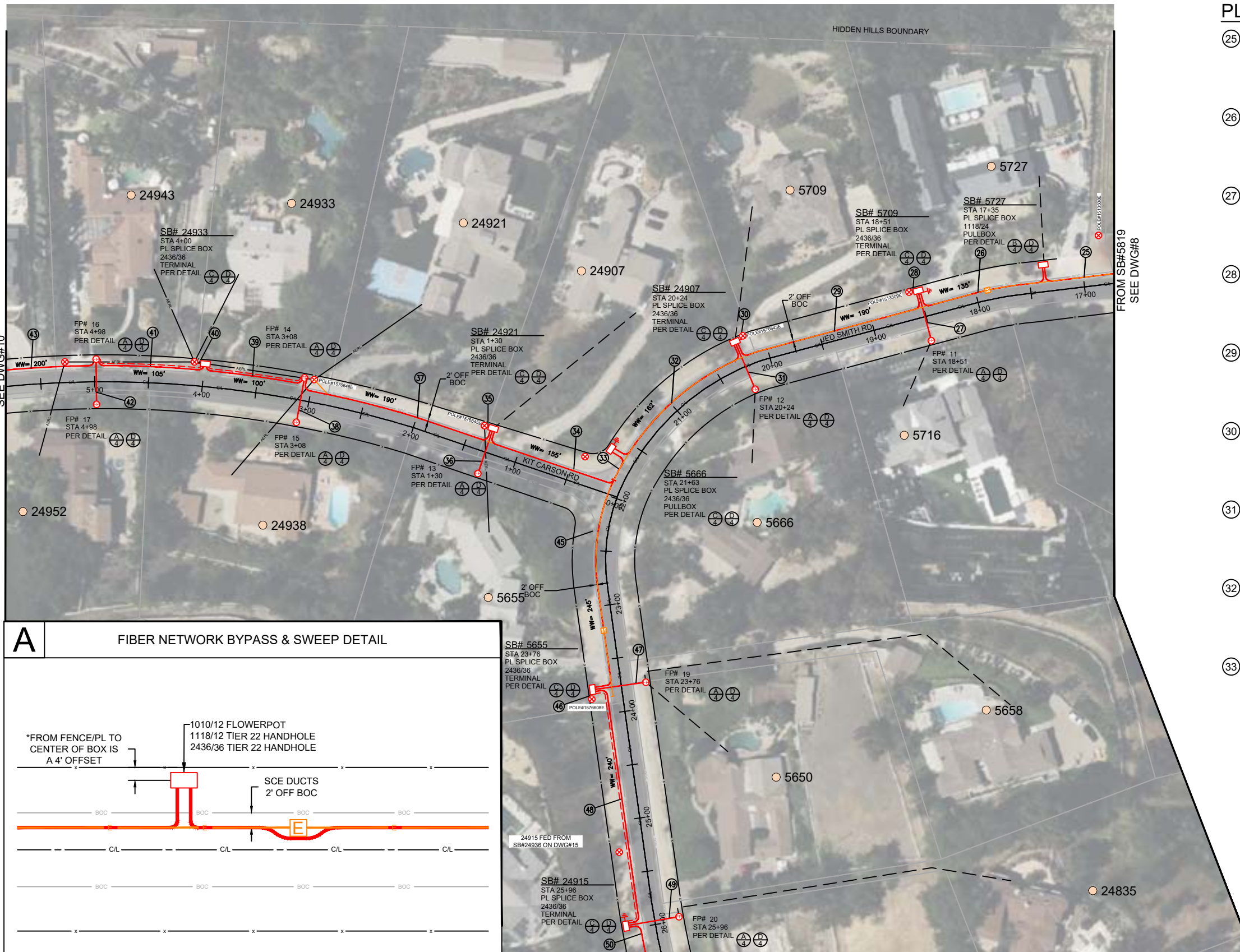


JOB NO. HIDDEN HILLS - PHASE 5  
 LOCATION HIDDEN HILLS, CA  
 ENGR JOY PADILLA TEL 909-457-8448

SUBJECT TRENCH ALIGNMENT  
 TYPE OF CONST DUCT PLACEMENT  
 DWG 19 OF 20

VERSION 09/07/2023  
  


SHEET INDEX	
DWG 1 - COVER PAGE	
DWG 2 - BILL OF MATERIALS	
DWG 3 - TYPICAL CONST. DETAILS	
DWG 4 - TYPICAL BOX DETAILS	
DWG 5 TO 20 - CONDUIT DESIGN	



**PLACEMENT NOTES:**

- 25 SB#5819 13+26 TO SB#5727 17+35 PL'D ON DWG#8 (2) 1.25" SDR11 PER DETAIL (A/3)
- 26 SB#5727 17+35 TO SB#5709 18+51 PLACE 135' (2) 1.25" SDR11 PER DETAIL (A/3)
- 27 SB#5709 18+51 TO FP#11 18+51 PLACE 45' (2) 1.25" SDR11 PER DETAIL (A/3) (J/3)
- 28 SB#5709 18+51 TO POLE#1513509E24 PLACE 10' (2) 1.25" SDR11 PER DETAIL (A/3) (K/3)
- 29 SB#5709 18+51 TO SB#24907 20+24 PLACE 190' (2) 1.25" SDR11 PER DETAIL (A/3)
- 30 SB#24907 20+24 TO POLE#1576843E PLACE 10' (2) 1.25" SDR11 PER DETAIL (A/3) (K/3)
- 31 SB#24907 20+24 TO FP#12 20+24 PLACE 45' (2) 1.25" SDR11 PER DETAIL (A/3) (J/3)
- 32 SB#24907 20+24 TO SB#5666 21+63 PLACE 162' (2) 1.25" SDR11 PER DETAIL (A/3)
- 33 SB#5666 21+63 TIC MARK 21+79 PLACE 30' (4) 1.25" SDR11 PER DETAIL (A/3)
- 34 TIC MARK 21+79 SB#24921 1+30 PLACE 125' (2) 1.25" SDR11 PER DETAIL (A/3)
- 35 SB#24921 1+30 TO POLE#1576645E PLACE 10' (2) 1.25" SDR11 PER DETAIL (A/3) (K/3)
- 36 SB#24921 1+30 TO FP#13 1+30 PLACE 45' (2) 1.25" SDR11 PER DETAIL (A/3) (J/3)
- 37 SB#24921 1+30 TO FP#14 3+08 PLACE 190' (2) 1.25" SDR11 PER DETAIL (A/3)
- 38 FP#14 3+08 TO FP#15 3+08 PLACE 45' (2) 1.25" SDR11 PER DETAIL (A/3) (J/3)
- 39 FP#14 3+08 TO SB#24933 4+00 PLACE 100' (4) 1.25" SDR11 PER DETAIL (A/3)
- 40 SB#24933 4+00 TO RISER POLE PLACE 10' (2) 1.25" SDR11 PER DETAIL (A/3) (K/3)
- 41 SB#24933 4+00 TO FP#16 4+98 PLACE 105' (4) 1.25" SDR11 PER DETAIL (A/3)
- 42 FP#16 4+98 TO FP#17 4+98 TO PLACE 45' (2) 1.25" SDR11 PER DETAIL (A/3) (J/3)
- 43 FP#16 4+98 TO SB#24961 6+89 PLACE 200' (2) 1.25" SDR11 PER DETAIL (A/3)
- 44 TIC MARK 21+79 TO SB#5655 23+76 PLACE 215' (2) 1.25" SDR11 PER DETAIL (A/3) (J/3)
- 45 SB#5655 23+76 TO POLE#1576608E PLACE 10' (2) 1.25" SDR11 PER DETAIL (A/3) (K/3)
- 46 SB#5655 23+76 TO FP#19 23+76 PLACE 45' (2) 1.25" SDR11 PER DETAIL (A/3) (J/3)
- 47 SB#5655 23+76 TO SB#24915 25+96 PLACE 240' (2) 1.25" SDR11 PER DETAIL (A/3)
- 48 SB#5655 23+76 TO FP#20 25+96 PLACE 45' (2) 1.25" SDR11 PER DETAIL (A/3) (J/3)
- 49 SB#5655 23+76 TO TIC MARK 26+61 PLACE 75' (4) 1.25" SDR11 PER DETAIL (A/3)
- 50 SB#5655 23+76 TO SB#24915 25+96 PLACE 240' (2) 1.25" SDR11 PER DETAIL (A/3)

**SCE UNDERGROUNDING NOTE:**  
 IF THE SCE UNDERGROUNDING PROJECT COMES AFER THE HIDDEN HILLS FTTH PROJECT, PLEASE DISREGARD DWG#20 AND REFER TO DWG#9 FOR CONSTRUCTION

