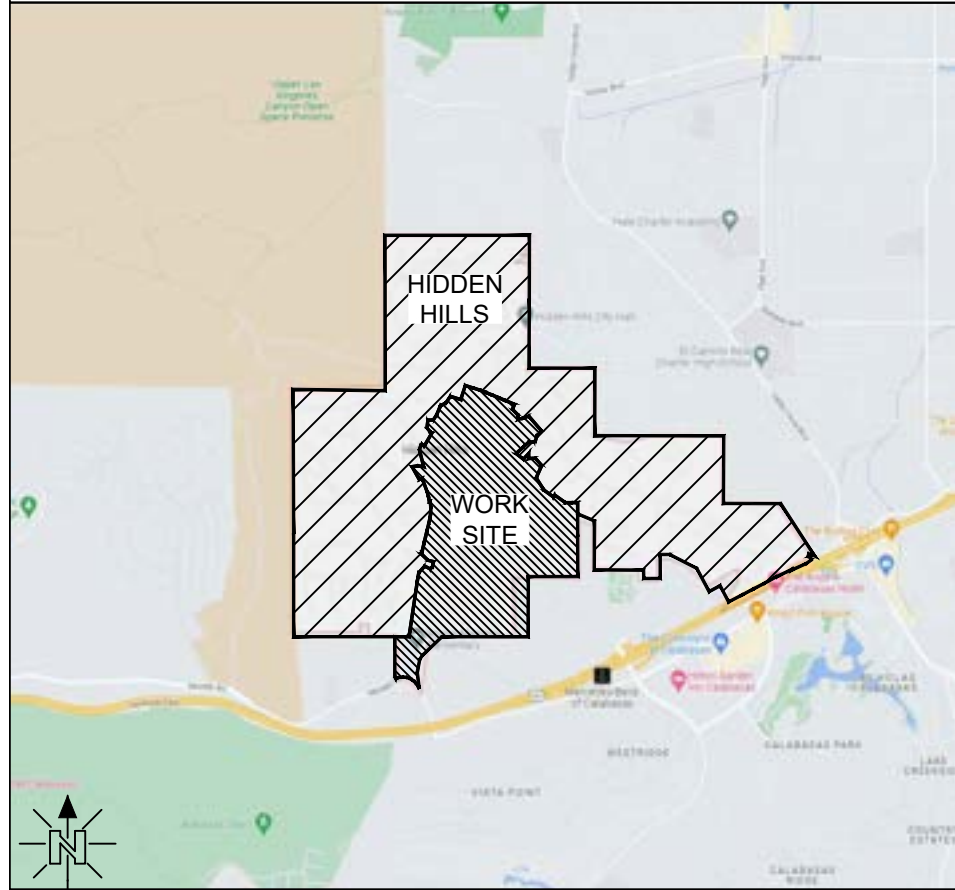


JOB DESCRIPTION

THIS JOB WILL PLACE (55,721') 1.25" SDR11 CONDUIT, (56) 24X36X36 SPLICE BOXES, (7) 11x18x12 PULLBOXES, AND (60) 10X10X12 FLOWER POTS TO SERVE 177 SFU IN PHASE 4 OF HIDDEN HILLS.

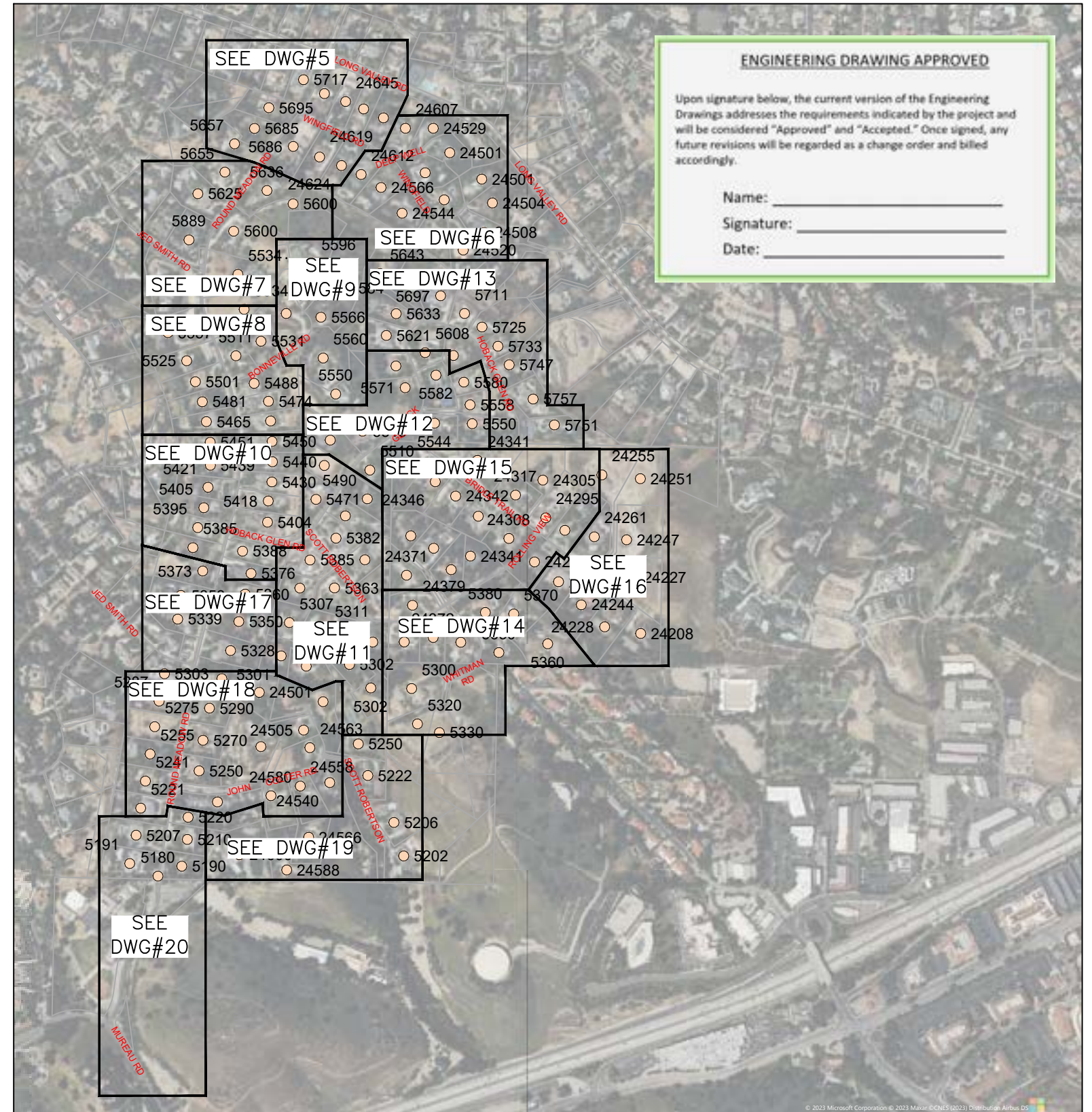
VICINITY MAP N.T.S.



LEGEND

TELCO MANHOLE	BORE PIT	FIRE HYDRANT
TELCO VAULT	BRASS CAP	GAS VALVE
TELCO BOX	CATV PED	STREET LIGHT
FLOWER POT	CULVERT	SEWER MANHOLE
TELCO X-BOX	ELEC CABINET	STORM DRAIN
SOLELY OWNED POLE	ELEC MANHOLE	WATER MANHOLE
JOINT POLE	ELEC TRANSFORMER	WATER METER
ANCHOR	ELEC J-BOX	WATER VALVE
BORE DUCT - NEW DUCT - NEW + SERVICE DUCT - EXISTING DUCT - FUTURE SERVICE - AERIAL ELECTRICAL CABLE TV CENTERLINE BACK OF CURB	BORE GAS IRRG P/L PUE ROW S SD T W	FENCE LINE IRRG P/L PUE ROW S SD T W

HIDDEN HILLS PHASE 4 - 177 SFU



JOB NO. HIDDEN HILLS - PHASE 4
 LOCATION HIDDEN HILLS, CA
 ENGR JOY PADILLA TEL 909-457-8448

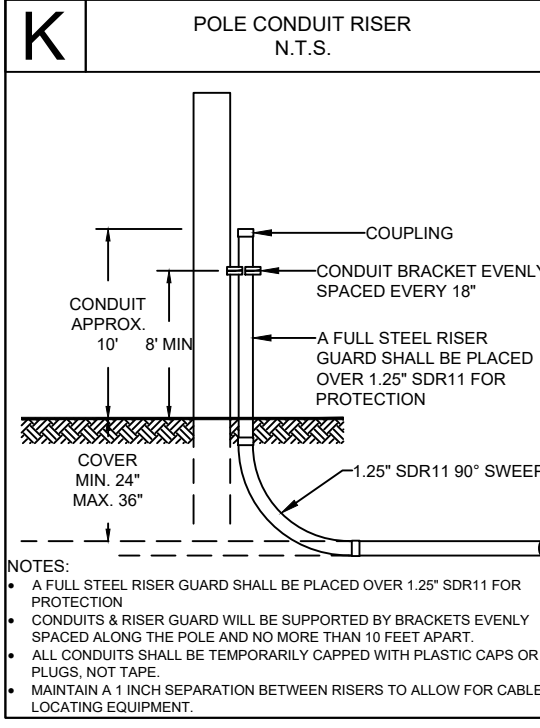
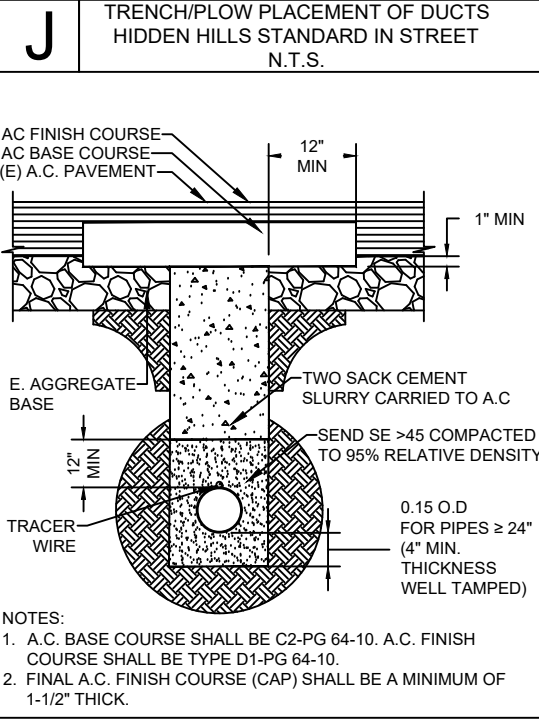
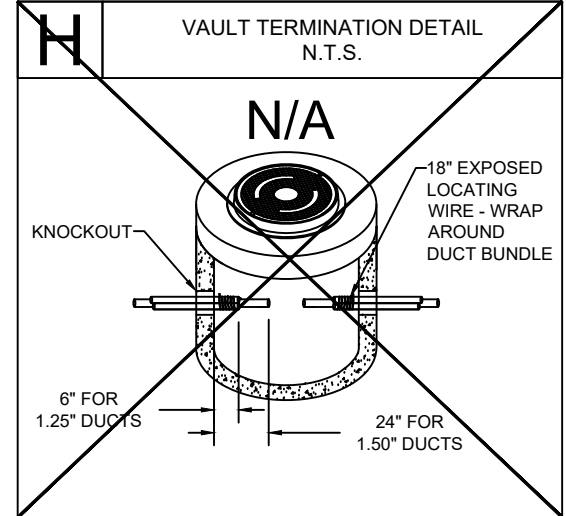
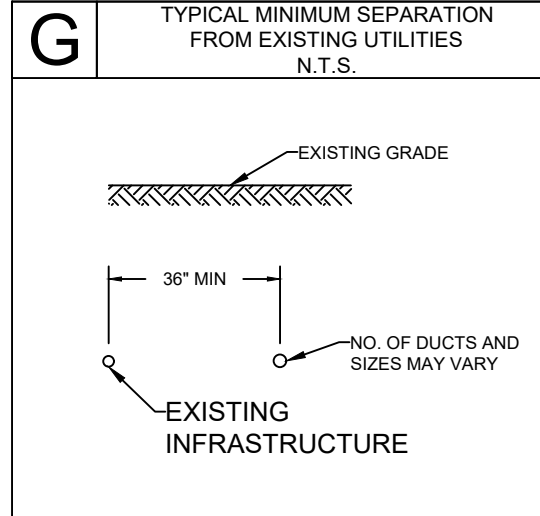
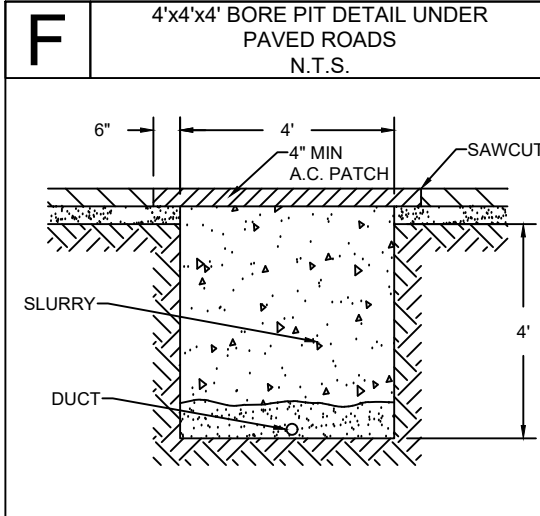
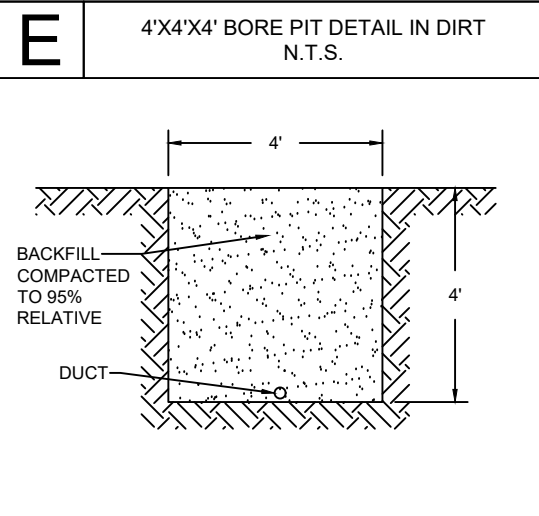
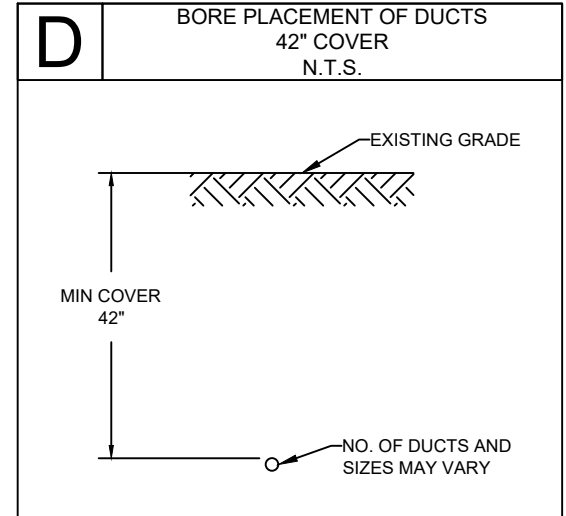
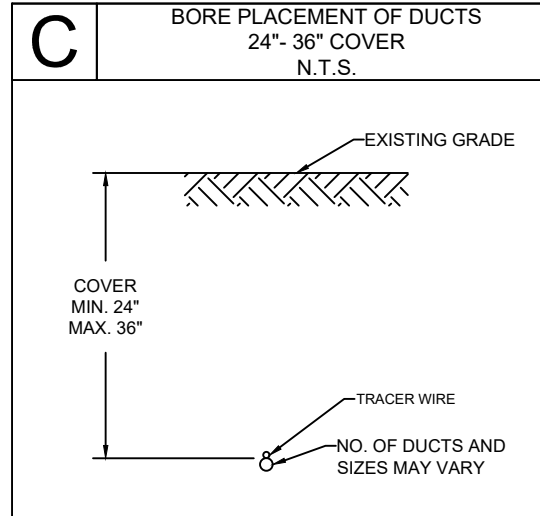
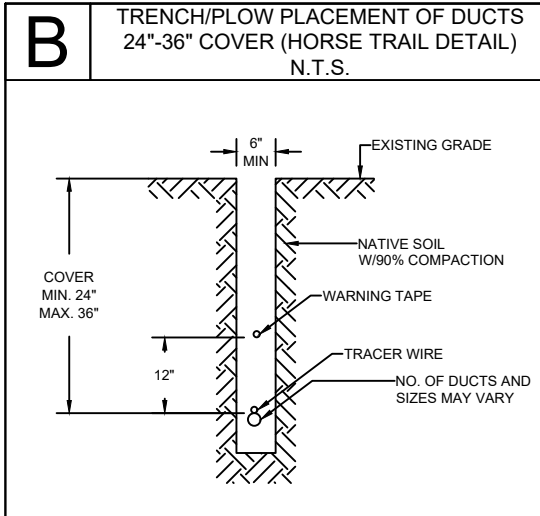
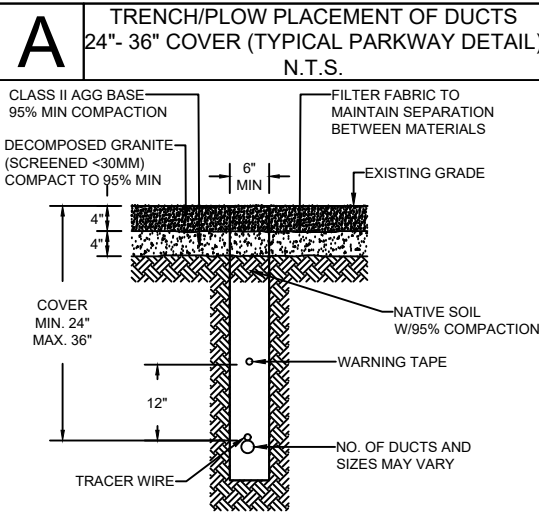
SUBJECT
COVER SHEET
 TYPE OF CONST
DUCT PLACEMENT
 DWG 1 OF 20

VERSION
09/07/2023
 CONFIDENTIAL AND PROPRIETARY INFORMATION
 THE INFORMATION CONTAINED HEREIN, IS NOT FOR USE OR
 DISCLOSURE OUTSIDE INYO NETWORKS, INC. OR THEIR
 AFFILIATED COMPANIES EXCEPT UNDER WRITTEN AGREEMENT

SHEET INDEX	
DWG 1 - COVER PAGE	
DWG 2 - BILL OF MATERIALS	
DWG 3 - TYPICAL CONST. DETAILS	
DWG 4 - TYPICAL BOX DETAILS	
DWG 5 TO 20 - CONDUIT DESIGN	

CONSTRUCTION NOTES

- THE LOCATION OF EXISTING UTILITIES ARE FOR REFERENCE AND ARE SHOWN IN THEIR APPROXIMATE LOCATION ONLY. EXACT LOCATIONS MUST BE LOCATED BY UNDERGROUND SERVICE ALERT BEFORE ANY DIGGING.
- THE CONTRACTOR SHALL HAVE A COPY OF THE APPROVED CONSTRUCTION PLANS AND APPROVED TRAFFIC CONTROL PLAN AT THE PROJECT SITE AT ALL TIMES.
- ALL UTILITIES CROSSING EXISTING CITY STREETS MUST BE BORED OR PUNCHED, UNLESS PERMISSION TO OPEN CUT HAS BEEN GIVEN IN WRITING BY THE CITY ENGINEER OR HIS AUTHORIZED REPRESENTATIVE. BEFORE STARTING ANY STREET BORE THAT CROSSES A MAJOR ROADWAY. THE CONTRACTOR MUST SCHEDULE A SEPARATE FIELD MEETING WITH THE PROJECT INSPECTOR TO VERIFY THAT ALL UNDERGROUND SERVICE ALERT AND DESIGN REQUIREMENTS ARE MET.
- THE UTILITY COMPANY SHALL CALL THE ENGINEERING DIVISION 24 HOURS IN ADVANCE OF STARTING WORK GIVING LOCATION AND PERMIT NUMBER IN ORDER TO SCHEDULE INSPECTIONS. STATUS UPDATES SHALL BE MADE WEEKLY.
- ALIGNMENT ON PLANS MAY NOT DEVIATE MORE THAN 1' WITHOUT GETTING THE APPROVAL OF THE GOVERNING AGENCY.
- ALL WORK REQUIRING ASPHALT REPLACEMENT, CONCRETE REPLACEMENT OR RESURFACING IN CITY RIGHT OF WAY WILL REQUIRE A FINAL INSPECTION WITH THE UTILITY COMPANY REPRESENTATIVE AT TIME OF COMPLETION.
- ALL STREET EXCAVATIONS SHALL BE TWO SACK SLURRY BACK FILLED. PAVED STREETS AND DRIVEWAYS SHALL BE REPAVED IN A MANNER THAT MATCHES THE PAVEMENT PRIOR TO CONSTRUCTION. ANY TRENCHES ON PRIVATE PROPERTY DO NOT REQUIRE SLURRY BACKFILL BUT ARE REQUIRED TO COMPACT TO 90%.
- PROTECTIVE DEVICES ARE REQUIRED! THESE PROTECTIVE DEVICES INCLUDE, ORANGE VEST (DAYTIME), REFLECTIVE ORANGE VEST (NIGHTTIME), TRAFFIC CONES, BARRICADES FLASHING LIGHTS, FLARES, AND ANY OTHER TRAFFIC CONTROL DEVICE AS REQUIRED.
- THE CONTRACTOR WILL SUBMIT A TRAFFIC CONTROL PLAN AS PART OF THE CONSTRUCTION PERMIT APPLICATION FOR ACTIVITIES ALONG STATE HIGHWAYS AND COUNTY ROADS. THE PLAN MUST FOLLOW THE RULES AND REGULATIONS OF THE GOVERNING AGENCY AND BE CONSISTENT WITH CONTRACTOR CONSTRUCTION METHODS AND ALL PLANNED ACTIVITIES ALONG STATE HIGHWAY AND COUNTY ROADS.
- THE TRENCH BOTTOM SHALL BE SMOOTH, FLAT, AND WITHOUT SURFACE IRREGULARITIES; OTHERWISE, A SUFFICIENT AMOUNT OF BEDDING MATERIAL SHALL BE INSTALLED TO PROVIDE THE REQUIRED SURFACE. MAINTAIN A MINIMUM OF 36" COVER WITH 6" BACK FILL FREE OF DEBRIS, ROCKS AND CLODS.
- ALL CONDUIT TO HAVE MINIMUM 24" COVER UNLESS OTHERWISE NOTED ON DRAWING SHEETS.
- ROW DEPICTED ON THESE DRAWINGS HAVE NOT BEEN SURVEYED AND ARE REPRESENTED USING AVAILABLE RECORDS AND FIELD ARTIFACTS.



SPANDREL NOTE:
DO NOT CUT ANY SPANDRELS UNLESS ABSOLUTELY REQUIRED. IF POTHOLING IS REQUIRED, RESTORE AREA TO LIKE OR NEW CONDITION



844-994-4448

JOB NO. HIDDEN HILLS - PHASE 4

LOCATION HIDDEN HILLS, CA

ENGR JOY PADILLA

TEL 909-457-8448

SUBJECT

TYPICAL CONSTRUCTION DETAILS

TYPE OF CONST

DUCT PLACEMENT

DWG 3 OF 20

VERSION

09/07/2023

SHEET INDEX

- DWG 1 - COVER PAGE
- DWG 2 - BILL OF MATERIALS
- DWG 3 - TYPICAL CONST. DETAILS
- DWG 4 - TYPICAL BOX DETAILS
- DWG 5 TO 20 - CONDUIT DESIGN

A 1010/12 FLOWERPOT DETAIL

SKU: 10005049

Compare to: Christy®G05T

MARKING OPTION CODES:
 -00 BLANK
 -11 WATER
 -13 SEWER
 -14 GROUND ROD

MODEL NO.	PRODUCT	DESCRIPTION	APPROX. WEIGHT	QTY PER PALLET
HTV10-S-CL-1	LID	10"x12" Traffic Valve Box Cover - Import	14	N/A
HTV10-S-BD-1	VALVE BOX	10"x12" Traffic Valve Box - Import	63	36
HTV10-S-CL-USA	LID	10"x12" Traffic Valve Box Cover - USA	14	N/A
HTV10-S-BD-USA	VALVE BOX	10"x12" Traffic Valve Box - USA	14	36

B 1118/24 TIER 22 HANDHOLE DETAIL

SKU: 200059176

Hardware:

- Stainless Steel 3/8" and 1/2" Hex Head Standard Bolts
- Penta Head Bolts
- One Way Security Bolts
- Security Torque Bolts

Options:

- Standard and custom Nameplates
- Mouse Holes
- Knock Outs
- Power EMS Cover
- AMR Cover

Load Ratings:

- ANSI/SCTE77 Tier 15 & Tier 22
- WUC 3.6

Boxes are Open Bottom and Stackable.

PART NO.	DESCRIPTION	APPROX. WEIGHT LBS.	QTY. PER PALLET
200016525	HPC 1118-12 Straight Wall Polymer Concrete Handhole Box w/ 1/2-13 SS Nut	56.00	1
200016489	HPC 1118-12 Configurable TIER-22 Solid Polymer Concrete Handhole Cover	NA	1

C 2436/36 TIER 22 HANDHOLE DETAIL

SKU: 200059032

Hardware:

- Stainless Steel 3/8" and 1/2" Hex Head Standard Bolts
- Penta Head Bolts
- One Way Security Bolts
- Security Torque Bolts

Options:

- Standard and custom Nameplates
- Mouse Holes
- Knock Outs
- Power EMS Cover
- AMR Cover

Load Ratings:

- ANSI/SCTE77 Tier 15 & Tier 22
- WUC 3.6

Boxes are Open Bottom and Stackable.

PART NO.	DESCRIPTION	APPROX. WEIGHT LBS.	QTY. PER PALLET
200022186	HPC 2436-36 Straight Wall Polymer Concrete Handhole Box w/ 1/2-13 SS Nut	86	1
100032420	HPC 2436-36 Bolt Down TIER-22 Solid Polymer Concrete Handhole Cover BLANK	NA	1

D FLOWERPOT & HANDHOLE OFFSET DETAIL

NOTES:

- HANDHOLE AND FLOWERPOT OFFSETS ARE MEASURED FROM CENTER OF HANDHOLE/FLOWERPOT.
- HANDHOLE AND FLOWERPOT OFFSETS ARE 4' OFF FENCE. IF NO FENCE IS AVAILABLE, USE PROPERTY LINE.
- IN LOCATIONS WHERE 4' OFFSET FROM FENCE/PROPERTY LINE IS NOT FEASIBLE DUE TO SPACE RESTRICTION, PLACE EDGE OF HANDHOLE/FLOWERPOT AGAINST FENCE/PROPERTY LINE.
- DO NOT PLACE ANY HANDHOLE/FLOWERPOT IN THE STREET. ALL HANDHOLE/FLOWERPOT SHALL BE PLACED IN THE SHOULDER WITHIN THE PUE.
- TRENCHLINE OFFSETS ARE VARIABLE AND ARE NOTED ON APPLICABLE DRAWINGS.

FROM FENCE/PL TO CENTER OF BOX IS A 4' OFFSET

TRENCH OFFSET IS VARIABLE, SEE DRAWINGS

1010/12 FLOWERPOT
1118/12 TIER 22 HANDHOLE
2436/36 TIER 22 HANDHOLE

1010/12 FLOWERPOT
1118/12 TIER 22 HANDHOLE

D 1730 HANDHOLE DETAIL

17" x 30" x 11" (INSIDE DIMENSIONS)

MEETS CALTRANS # 6T
NDOT #7, ADOT #7T SPECIFICATIONS

DESIGN LOAD: H-20 FULL TRAFFIC

CATALOG NUMBER	PRODUCT	DESCRIPTION	APPROX. WT. (LBS.)
CYB1730	BOX WITH SLAB	REINFORCED CONCRETE	288
CY1730SL	COVER	STEEL CHECKER PLATE	112
CY1730EXT	EXTENSION	12" HIGH REINFORCED CONCRETE	244
CYHDB1730	HOLD DOWN BOLT	HOLD DOWN PENTAHEAD BOLT (2 EA.)	

F 3048 HANDHOLE DETAIL

WHEN ORDERING:
 THE STANDARD SBC AR3048 KIT INCLUDES THE AR3048 BOX, (2) AR3048 EXTENSIONS, AR3048 LID, AND THE AR3048 SLAB. FOR OTHER COMPONENTS, ORDER BY CATALOG NUMBER.

CATALOG NUMBER	PRODUCT	DESCRIPTION	APPROX. WT. (LBS.)
AR3048	BOX	POLYMER CONCRETE 18"	190 LBS.
AR304802TELE	LID	POLYMER CONCRETE 3"	94 LBS.
AR3048EX	EXTENSION	POLYMER CONCRETE 12"	136 LBS.
AR3048SL	SLAB	POLYMER CONCRETE 2"	120 LBS.

DESIGN LOAD: LIGHT VEHICULAR TRAFFIC, 10,000 WHEEL LOAD



JOB NO. HIDDEN HILLS - PHASE 4

LOCATION HIDDEN HILLS, CA

ENGR JOY PADILLA TEL 909-457-8448

SUBJECT TYPICAL BOX DETAILS

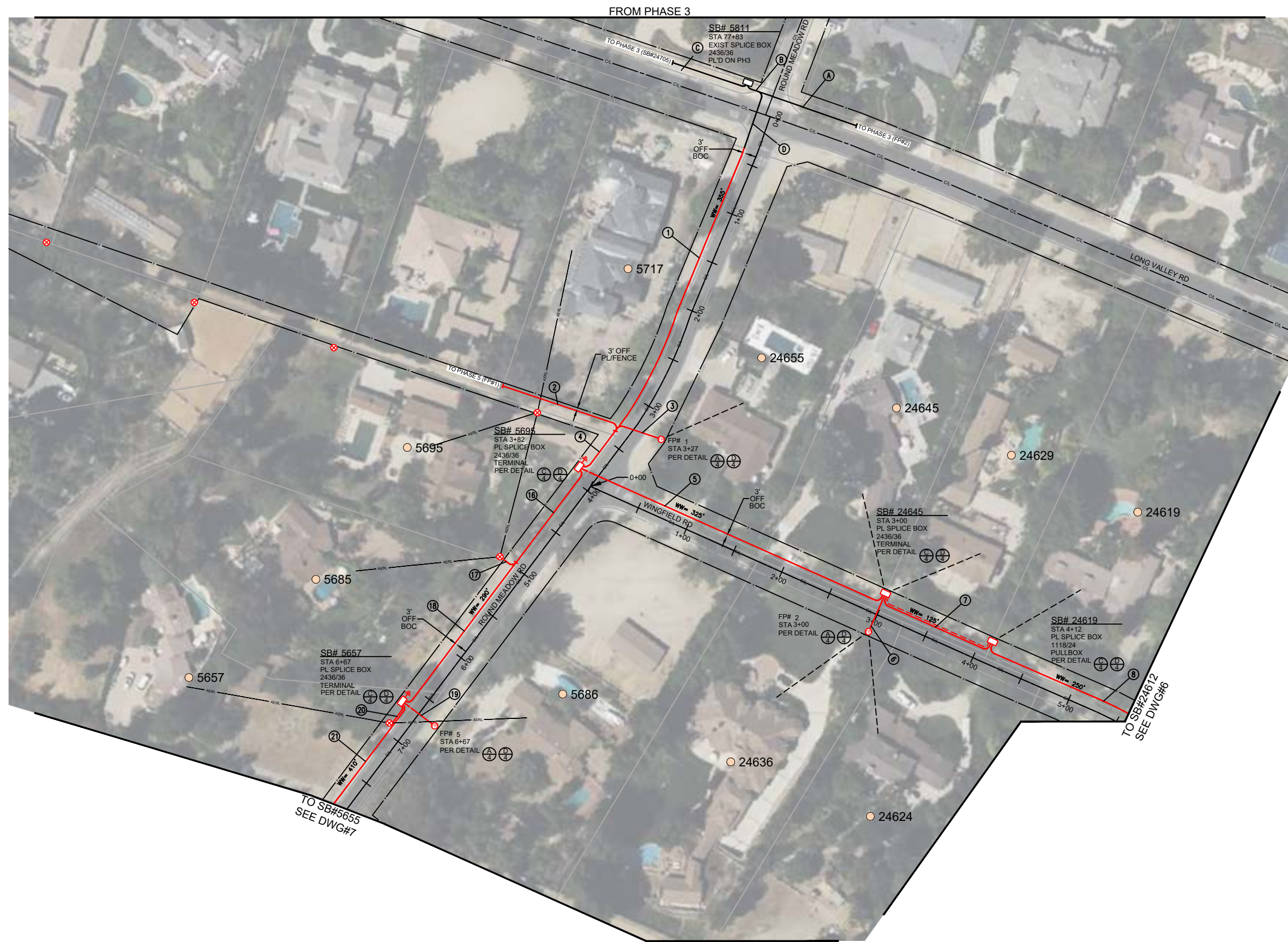
TYPE OF CONST DUCT PLACEMENT

DWG 4 OF 20

VERSION 09/07/2023

SHEET INDEX

DWG 1 - COVER PAGE
DWG 2 - BILL OF MATERIALS
DWG 3 - TYPICAL CONST. DETAILS
DWG 4 - TYPICAL BOX DETAILS
DWG 5 TO 20 - CONDUIT DESIGN



PLACEMENT NOTES:

- ① END PH3 0+36 TO TIC MARK 3+36 PLACE 300' (3) 1.25" SDR11 PER DETAIL (A/3)
- ② TIC MARK 3+36 TO START PH5 PLACE 120' (2) 1.25" SDR11 PER DETAIL (B/3)
- ③ TIC MARK 3+36 TO FP#1 3+27 PLACE 45' (2) 1.25" SDR11 PER DETAIL (A/3) (J/3)
- ④ TIC MARK 3+36 TO SB#5695 3+82 PLACE 55' (7) 1.25" SDR11 PER DETAIL (A/3) (B/3)
- ⑤ SB#5695 3+82 TO SB#24645 3+00 PLACE 325' (2) 1.25" SDR11 PER DETAIL (A/3) (J/3)
- ⑥ SB#24645 3+00 TO FP#2 3+00 PLACE 45' (2) 1.25" SDR11 PER DETAIL (A/3) (J/3)
- ⑦ SB#24645 3+00 TO SB#24619 4+12 PLACE 125' (3) 1.25" SDR11 PER DETAIL (A/3)
- ⑧ SB#24619 4+12 TO SB#24612 6+18 PLACE 250' (2) 1.25" SDR11 PER DETAIL (A/3) (J/3)
- ⑩ SB#5695 3+82 TO TIC MARK 5+00 PLACE 115' (5) 1.25" SDR11 PER DETAIL (A/3)
- ⑪ TIC MARK 5+00 TO RISER POLE 5+00 PLACE 10' (2) 1.25" SDR11 PER DETAIL (A/3) (K/3)
- ⑫ TIC MARK 5+00 TO SB#5657 6+67 PLACE 175' (3) 1.25" SDR11 PER DETAIL (A/3)
- ⑬ SB#5657 6+67 TO FP#5 6+67 PLACE 45' (2) 1.25" SDR11 PER DETAIL (A/3) (J/3)
- ⑭ SB#5657 6+67 TO RISER POLE PLACE 20' (2) 1.25" SDR11 PER DETAIL (A/3) (K/3)
- ⑮ SB#5657 6+67 TO TIC MARK 10+00 PLACE 340' (3) 1.25" SDR11 PER DETAIL (A/3)

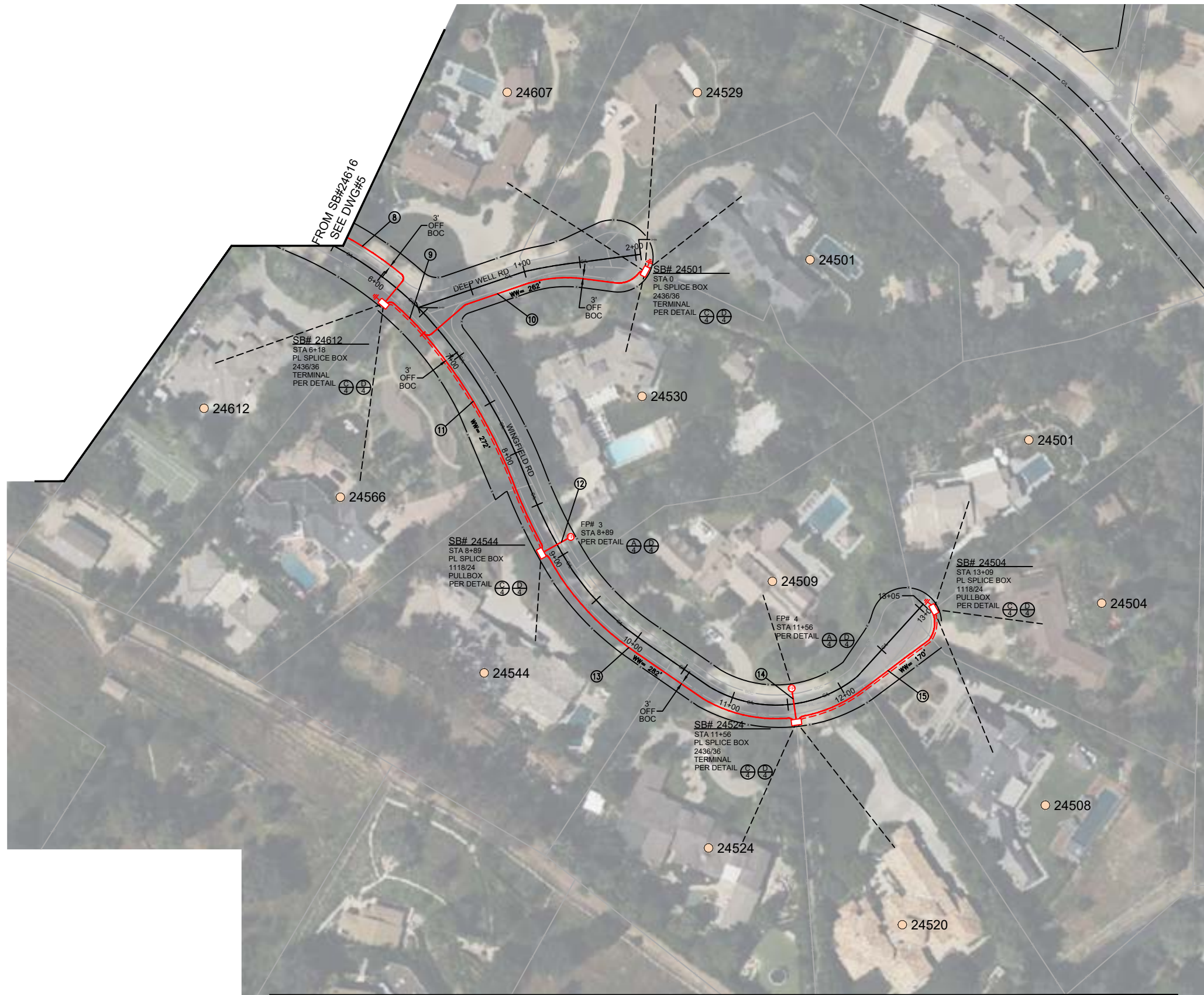


JOB NO. HIDDEN HILLS - PHASE 4
 LOCATION HIDDEN HILLS, CA
 ENGR JOY PADILLA TEL 909-457-8448

SUBJECT
TRENCH ALIGNMENT
 TYPE OF CONST
DUCT PLACEMENT
 DWG 5 OF 19

VERSION
 09/07/2023

SHEET INDEX	
DWG 1 - COVER PAGE	
DWG 2 - BILL OF MATERIALS	
DWG 3 - TYPICAL CONST. DETAILS	
DWG 4 - TYPICAL BOX DETAILS	
DWG 5 TO 20 - CONDUIT DESIGN	



PLACEMENT NOTES:

- ⑧ SB#24619 4+12 TO
SB#24612 6+18
PL'D ON DWG#5
Ø 1.25" SDR11
PER DETAIL (A/3) (J/3)
- ⑨ SB#24612 6+18
TIC MARK 6+64
PLACE 47'
(4) 1.25" SDR11
PER DETAIL (A/3)
- ⑩ TIC MARK 6+64 TO
SB#24501 2+05
PLACE 215'
Ø 1.25" SDR11
PER DETAIL (A/3) (J/3)
- ⑪ TIC MARK 6+64 TO
SB#24544 8+89
PLACE 225'
Ø 1.25" SDR11
PER DETAIL (A/3)
- ⑫ SB#24544 8+89 TO
FP#3 8+89
PLACE 45'
Ø 1.25" SDR11
PER DETAIL (A/3) (J/3)
- ⑬ SB#24544 8+89 TO
SB#24524 11+00
PLACE 282'
Ø 1.25" SDR11
PER DETAIL (A/3)
- ⑭ SB#24524 11+56 TO
FP#4 11+56
PLACE 45'
Ø 1.25" SDR11
PER DETAIL (A/3) (J/3)
- ⑮ SB#24524 11+56 TO
SB#24504 13+09
PLACE 170'
Ø 1.25" SDR11
PER DETAIL (A/3)



JOB NO. HIDDEN HILLS - PHASE 4
 LOCATION HIDDEN HILLS, CA
 ENGR JOY PADILLA TEL 909-457-8448

SUBJECT
TRENCH ALIGNMENT
 TYPE OF CONST
DUCT PLACEMENT
 DWG 6 OF 20

VERSION
09/07/2023

SHEET INDEX	
DWG 1 - COVER PAGE	
DWG 2 - BILL OF MATERIALS	
DWG 3 - TYPICAL CONST. DETAILS	
DWG 4 - TYPICAL BOX DETAILS	
DWG 5 TO 20 - CONDUIT DESIGN	



PLACEMENT NOTES:

- 21 SB#5657 6+67 TO TIC MARK 10+00 PL'D ON DWG#5 (3) 1.25" SDR11 PER DETAIL (A/3)
- 22 TIC MARK 10+00 TO RISER POLE PLACE 10' (2) 1.25" SDR11 PER DETAIL (A/3)
- 23 TIC MARK 10+00 TO SB#5655 10+69 PLACE 70' (5) 1.25" SDR11 PER DETAIL (A/3)
- 24 SB#5655 10+69 TO FP#6 10+69 PLACE 45' (2) 1.25" SDR11 PER DETAIL (A/3) (J/3)
- 25 SB#5655 10+69 TO SB#5625 12+20 PLACE 160' (3) 1.25" SDR11 PER DETAIL (A/3)
- 26 SB#5625 12+20 TO RISER POLE PLACE 20' (2) 1.25" SDR11 PER DETAIL (A/3) (K/3)
- 27 SB#5625 12+20 TO FP#7 12+20 PLACE 45' (2) 1.25" SDR11 PER DETAIL (A/3) (J/3)
- 28 SB#5625 12+20 TO SB#5589 14+65 PLACE 255' (3) 1.25" SDR11 PER DETAIL (A/3)
- 29 SB#5589 14+65 TO RISER POLE PLACE 15' (2) 1.25" SDR11 PER DETAIL (A/3) (K/3)
- 30 SB#5589 14+65 TO FP#8 14+65 PLACE 45' (2) 1.25" SDR11 PER DETAIL (A/3) (J/3)
- 31 SB#5589 14+65 TO TIC MARK 15+16 PLACE 55' (7) 1.25" SDR11 PER DETAIL (A/3) (J/3)
- 32 TIC MARK 15+16 TO START PH 5 2+88 PLACE 285' (2) 1.25" SDR11 PER DETAIL (A/3)
- 33 TIC MARK 15+16 TO TIC MARK 15+61 PLACE 55' (5) 1.25" SDR11 PER DETAIL (A/3) (J/3)
- 34 TIC MARK 15+61 TO RISER POLE PLACE 20' (2) 1.25" SDR11 PER DETAIL (A/3) (K/3)
- 35 TIC MARK 15+61 TO SB#5537 19+55 PLACE 405' (3) 1.25" SDR11 PER DETAIL (A/3)

TO SB#5537
SEE DWG#8

SEE DWG#9



JOB NO. HIDDEN HILLS - PHASE 4
 LOCATION HIDDEN HILLS, CA
 ENGR JOY PADILLA TEL 909-457-8448

SUBJECT TRENCH ALIGNMENT
 TYPE OF CONST DUCT PLACEMENT
 DWG 7 OF 20

VERSION 09/07/2023

SHEET INDEX	
DWG 1 - COVER PAGE	
DWG 2 - BILL OF MATERIALS	
DWG 3 - TYPICAL CONST. DETAILS	
DWG 4 - TYPICAL BOX DETAILS	
DWG 5 TO 20 - CONDUIT DESIGN	



PLACEMENT NOTES:

- (35) TIC MARK 15+61 TO SB#5537 19+55 PL'D ON DWG#7 (3) 1.25" SDR11 PER DETAIL (A/3)
- (36) SB#5537 19+55 TO RISER POLE PLACE 15' (2) 1.25" SDR11 PER DETAIL (A/3) (K/3)
- (37) SB#5537 19+55 TO FP#9 19+55 PLACE 50' (2) 1.25" SDR11 PER DETAIL (A/3) (J/3)
- (38) SB#5537 19+55 TO SB#5501 22+00 PLACE 260' (3) 1.25" SDR11 PER DETAIL (A/3)
- (39) SB#5501 22+00 TO RISER POLE PLACE 15' (2) 1.25" SDR11 PER DETAIL (A/3) (K/3)
- (40) SB#5501 22+00 TO TIC MARK PLACE 45' (5) 1.25" SDR11 PER DETAIL (A/3) (J/3)
- (41) TIC MARK TO SB#5511 2+03 PLACE 195' (2) 1.25" SDR11 PER DETAIL (A/3)
- (42) SB#5511 2+03 TO RISER POLE PLACE 45' (2) 1.25" SDR11 PER DETAIL (A/3) (K/3)
- (43) SB#5511 2+03 TO FP#10 2+03 PLACE 45' (2) 1.25" SDR11 PER DETAIL (A/3) (J/3)
- (44) SB#5511 2+03 TO FP#11 3+50 PLACE 146' (3) 1.25" SDR11 PER DETAIL (A/3)
- (45) FP#11 3+50 TO SB#5560 5+49 PLACE 200' (2) 1.25" SDR11 PER DETAIL (A/3)
- (51) TIC MARK TO SB#5488 23+35 PLACE 130' (3) 1.25" SDR11 PER DETAIL (A/3)
- (52) SB#5488 23+35 TO SB#5474 24+45 PLACE 80' (4) 1.25" SDR11 PER DETAIL (A/3)
- (53) SB#5474 24+45 TO TIC MARK PLACE 15' (2) 1.25" SDR11 PER DETAIL (A/3) (K/3)
- (54) SB#5474 24+45 TO FP#14 24+45 PLACE 45' (2) 1.25" SDR11 PER DETAIL (A/3) (J/3)
- (55) SB#5474 24+45 TO SB#5450 26+64 PLACE 230' (3) 1.25" SDR11 PER DETAIL (A/3)



JOB NO. HIDDEN HILLS - PHASE 4
 LOCATION HIDDEN HILLS, CA
 ENGR JOY PADILLA TEL 909-457-8448

SUBJECT TRENCH ALIGNMENT
 TYPE OF CONST DUCT PLACEMENT
 DWG 8 OF 20

VERSION 09/07/2023

SHEET INDEX	
DWG 1 - COVER PAGE	
DWG 2 - BILL OF MATERIALS	
DWG 3 - TYPICAL CONST. DETAILS	
DWG 4 - TYPICAL BOX DETAILS	
DWG 5 TO 20 - CONDUIT DESIGN	

SEE DWG#7

SEE DWG#6



PLACEMENT NOTES:

- ④⑤ FP#11 3+50 TO
SB#5560 5+49
PL'D ON DWG#8
② 1.25" SDR11
PER DETAIL (A/3)
- ④⑥ SB#5560 5+49 TO
FP#12 5+49
PLACE 35'
② 1.25" SDR11
PER DETAIL (A/3) (J/3)
- ④⑦ FP#12 5+49 TO
RISER POLE
PLACE 55'
② 1.25" SDR11
PER DETAIL (A/3) (K/3)
- ④⑧ SB#5560 5+49 TO
SB#5565 7+69
PLACE 200'
② 1.25" SDR11
PER DETAIL (A/3)
- ④⑨ SB#5565 7+69 TO
RISER POLE
PLACE 15'
② 1.25" SDR11
PER DETAIL (A/3) (K/3)
- ④⑩ SB#5565 7+69 TO
FP#13 7+69
PLACE 35'
② 1.25" SDR11
PER DETAIL (A/3) (J/3)
- ④⑪ SB#5565 7+69 TO
FP#60
PLACE 283'
② 1.25" SDR11
PER DETAIL (A/3) (J/3)

SEE MATCHLINE



844-994-4448

JOB NO. HIDDEN HILLS - PHASE 4

LOCATION HIDDEN HILLS, CA

ENGR JOY PADILLA

TEL 909-457-8448

SUBJECT

TRENCH ALIGNMENT

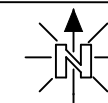
TYPE OF CONST

DUCT PLACEMENT

DWG 9 OF 20

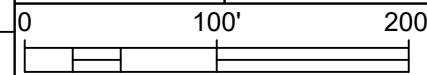
VERSION

09/07/2023



SHEET INDEX

- DWG 1 - COVER PAGE
- DWG 2 - BILL OF MATERIALS
- DWG 3 - TYPICAL CONST. DETAILS
- DWG 4 - TYPICAL BOX DETAILS
- DWG 5 TO 20 - CONDUIT DESIGN





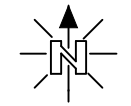
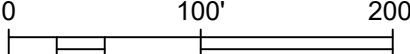
PLACEMENT NOTES:

- | | |
|-----------------------------------------------------------------------------------------------|--------------------------------------------------------------------------------------------------|
| 55) SB#5474 24+45
SB#5450 26+64
PL'D ON DWG#8
(3) 1.25" SDR11
PER DETAIL (A/3) | 63) SB#5418 29+75 TO
SB#5404 0+35
PLACE 175'
(3) 1.25" SDR11
PER DETAIL (A/3) |
| 56) SB#5450 26+64 TO
RISER POLE
PLACE 10'
(2) 1.25" SDR11
PER DETAIL (A/3) (K/3) | 64) SB#5404 0+35 TO
SB#5471 5+33
PLACE 505'
(2) 1.25" SDR11
PER DETAIL (A/3) |
| 57) SB#5450 26+64 TO
FP#15 26+64
PLACE 50'
(2) 1.25" SDR11
PER DETAIL (A/3) (J/3) | 30) SB#5404 0+35 TO
TIC MARK 32+40
PLACE 145'
(3) 1.25" SDR11
PER DETAIL (A/3) (J/3) |
| 58) SB#5450 26+64 TO
SB#5430 28+72
PLACE 225'
(3) 1.25" SDR11
PER DETAIL (A/3) | 31) TIC MARK 32+40 TO
FP#44 32+40
PLACE 50'
(2) 1.25" SDR11
PER DETAIL (A/3) (J/3) |
| 59) SB#5430 28+72 TO
RISER POLE
PLACE 10'
(2) 1.25" SDR11
PER DETAIL (A/3) (K/3) | 32) TIC MARK 32+40 TO
SB#5388 32+92
PLACE 60'
(5) 1.25" SDR11
PER DETAIL (A/3) |
| 60) SB#5430 28+72 TO
FP#16 28+72
PLACE 50'
(2) 1.25" SDR11
PER DETAIL (A/3) (J/3) | 33) SB#5388 32+92 TO
RISER POLE
PLACE 10'
(2) 1.25" SDR11
PER DETAIL (A/3) (K/3) |
| 61) SB#5430 28+72 TO
SB#5418 29+75
PLACE 125'
(5) 1.25" SDR11
PER DETAIL (A/3) | 34) SB#5388 32+92 TO
TIC MARK 34+29
PLACE 155'
(3) 1.25" SDR11
PER DETAIL (A/3) |
| 62) SB#5418 29+75 TO
FP#17 29+75
PLACE 50'
(2) 1.25" SDR11
PER DETAIL (A/3) (J/3) | |

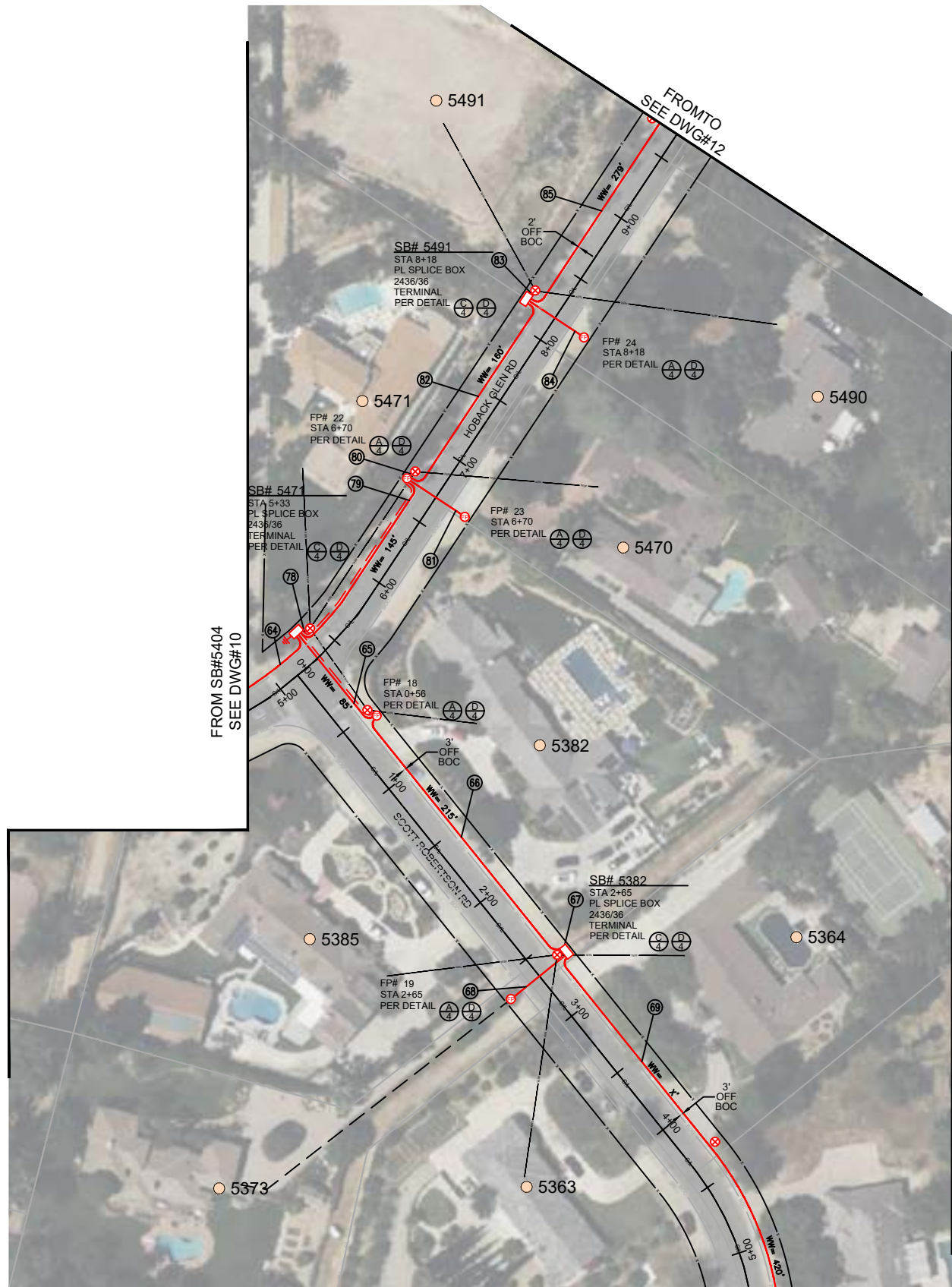


JOB NO. HIDDEN HILLS - PHASE 4
 LOCATION HIDDEN HILLS, CA
 ENGR JOY PADILLA TEL 909-457-8448

SUBJECT
TRENCH ALIGNMENT
 TYPE OF CONST
DUCT PLACEMENT
 DWG 10 OF 20

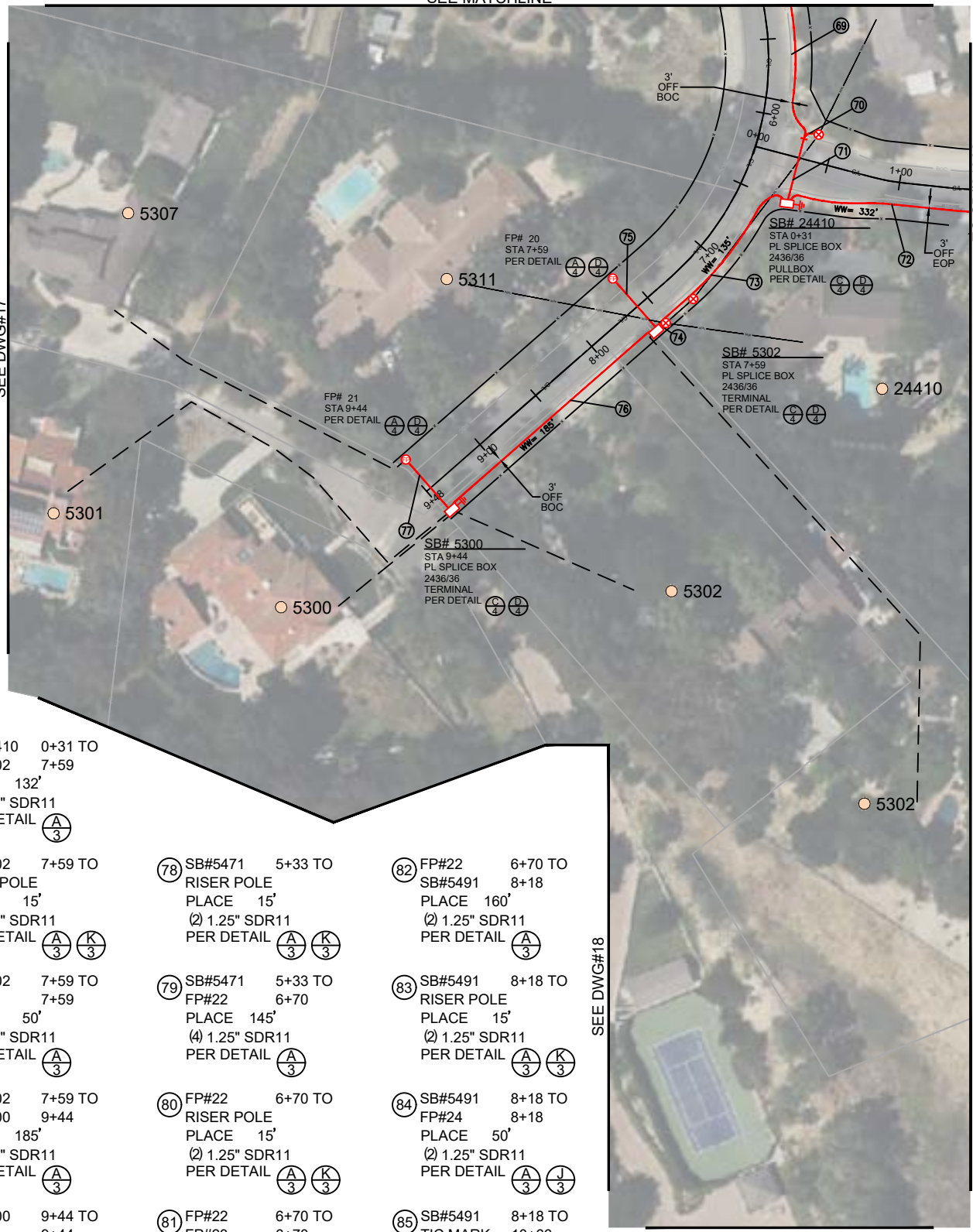
VERSION
09/07/2023



SHEET INDEX
 DWG 1 - COVER PAGE
 DWG 2 - BILL OF MATERIALS
 DWG 3 - TYPICAL CONST. DETAILS
 DWG 4 - TYPICAL BOX DETAILS
 DWG 5 TO 20 - CONDUIT DESIGN



PLACEMENT NOTES:

- 64 SB#5404 0+35 TO
SB#5471 5+33
PL'D ON DWG#10
(2) 1.25" SDR11
PER DETAIL (A/3)
- 65 SB#5471 5+33 TO
FP#18 0+56
PLACE 85'
(3) 1.25" SDR11
PER DETAIL (A/3) (J/3)
- 66 FP#18 0+56 TO
SB#5382 2+65
PLACE 215'
(2) 1.25" SDR11
PER DETAIL (A/3)
- 67 SB#5382 2+65 TO
RISER POLE
PLACE 15'
(2) 1.25" SDR11
PER DETAIL (A/3) (K/3)
- 68 SB#5382 2+65 TO
FP#19 2+65
PLACE 50'
(2) 1.25" SDR11
PER DETAIL (A/3) (J/3)
- 69 SB#5382 2+65 TO
TIC MARK
PLACE 370'
(2) 1.25" SDR11
PER DETAIL (A/3)
- 70 TIC MARK TO
RISER POLE
PLACE 15'
(2) 1.25" SDR11
PER DETAIL (A/3) (K/3)
- 71 TIC MARK TO
SB#24410 0+31
PLACE 50'
(4) 1.25" SDR11
PER DETAIL (A/3) (J/3)
- 72 SB#24410 0+31 TO
SB#24382 3+56
PLACE 332'
(2) 1.25" SDR11
PER DETAIL (A/3)
- 73 SB#24410 0+31 TO
SB#5302 7+59
PLACE 132'
(4) 1.25" SDR11
PER DETAIL (A/3)
- 74 SB#5302 7+59 TO
RISER POLE
PLACE 15'
(2) 1.25" SDR11
PER DETAIL (A/3) (K/3)
- 75 SB#5302 7+59 TO
FP#20 7+59
PLACE 50'
(2) 1.25" SDR11
PER DETAIL (A/3)
- 76 SB#5302 7+59 TO
SB#5300 9+44
PLACE 185'
(2) 1.25" SDR11
PER DETAIL (A/3)
- 77 SB#5300 9+44 TO
FP#21 9+44
PLACE 50'
(2) 1.25" SDR11
PER DETAIL (A/3) (J/3)
- 78 SB#5471 5+33 TO
RISER POLE
PLACE 15'
(2) 1.25" SDR11
PER DETAIL (A/3) (K/3)
- 79 SB#5471 5+33 TO
FP#22 6+70
PLACE 145'
(4) 1.25" SDR11
PER DETAIL (A/3)
- 80 FP#22 6+70 TO
RISER POLE
PLACE 15'
(2) 1.25" SDR11
PER DETAIL (A/3) (K/3)
- 81 FP#22 6+70 TO
FP#23 6+70
PLACE 50'
(2) 1.25" SDR11
PER DETAIL (A/3) (J/3)
- 82 FP#22 6+70 TO
SB#5491 8+18
PLACE 160'
(2) 1.25" SDR11
PER DETAIL (A/3)
- 83 SB#5491 8+18 TO
RISER POLE
PLACE 15'
(2) 1.25" SDR11
PER DETAIL (A/3) (K/3)
- 84 SB#5491 8+18 TO
FP#24 8+18
PLACE 50'
(2) 1.25" SDR11
PER DETAIL (A/3) (J/3)
- 85 SB#5491 8+18 TO
TIC MARK 10+66
PLACE 262'
(2) 1.25" SDR11
PER DETAIL (A/3)



	JOB NO. <u>HIDDEN HILLS - PHASE 4</u>	SUBJECT TRENCH ALIGNMENT	VERSION 09/07/2023		SHEET INDEX DWG 1 - COVER PAGE DWG 2 - BILL OF MATERIALS DWG 3 - TYPICAL CONST. DETAILS DWG 4 - TYPICAL BOX DETAILS DWG 5 TO 20 - CONDUIT DESIGN
	LOCATION <u>HIDDEN HILLS, CA</u>	TYPE OF CONST DUCT PLACEMENT	0 100' 200'		
ENGR <u>JOY PADILLA</u>	TEL <u>909-457-8448</u>	DWG <u>11</u> OF <u>20</u>			
844-994-4448					



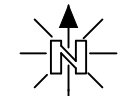
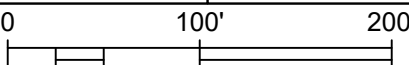
PLACEMENT NOTES:

- 85) SB#5491 8+18 TO TIC MARK 10+66 PL'D ON DWG#11
 (2) 1.25" SDR11 PER DETAIL (A/3)
- 86) TIC MARK 10+66 TO SB#5519 10+87 PLACE 17'
 (4) 1.25" SDR11 PER DETAIL (A/3)
- 87) TIC MARK 10+66 TO FP#25 10+66 PLACE 50'
 (2) 1.25" SDR11 PER DETAIL (A/3) (J/3)
- 88) SB#5519 10+87 TO RISER POLE PLACE 15'
 (2) 1.25" SDR11 PER DETAIL (A/3) (K/3)
- 89) SB#5519 10+87 TO SB#5571 15+53 PLACE 460'
 (2) 1.25" SDR11 PER DETAIL (A/3)
- 90) SB#5571 15+53 TO SB#5582 15+53 PLACE 50'
 (2) 1.25" SDR11 PER DETAIL (A/3) (J/3)
- 91) SB#5571 15+53 TO SB#5609 17+43 PLACE 185'
 (2) 1.25" SDR11 PER DETAIL (A/3)
- 92) SB#5609 17+43 TO RISER POLE PLACE 20'
 (2) 1.25" SDR11 PER DETAIL (A/3) (K/3)
- 93) SB#5609 17+43 TO FP#26 17+43 PLACE 50'
 (2) 1.25" SDR11 PER DETAIL (A/3) (J/3)
- 94) SB#5609 17+43 TO SB#5633 20+38 PLACE 310'
 (2) 1.25" SDR11 PER DETAIL (A/3)

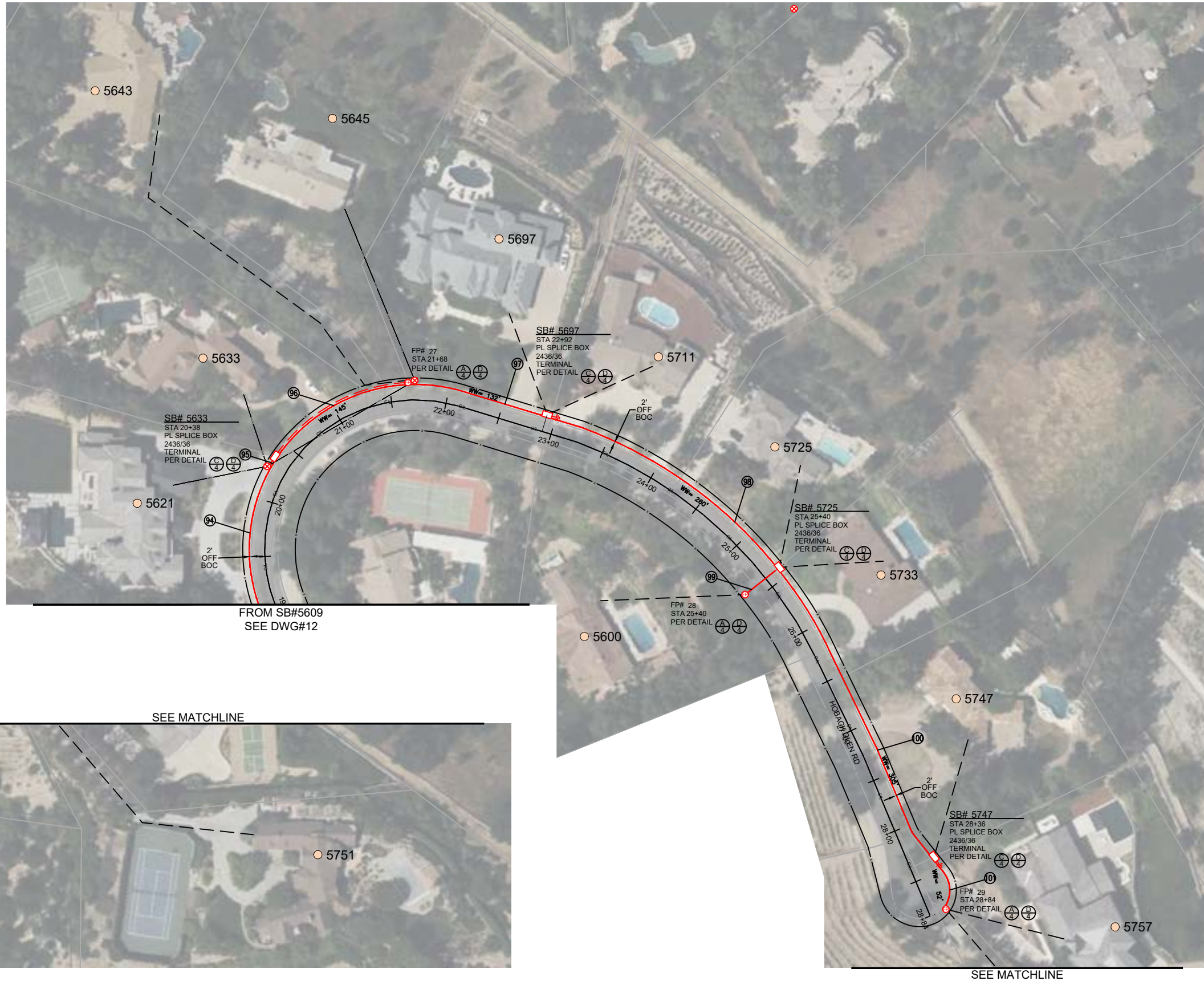


JOB NO. HIDDEN HILLS - PHASE 4
 LOCATION HIDDEN HILLS, CA
 ENGR JOY PADILLA TEL 909-457-8448
 844-994-4448

SUBJECT TRENCH ALIGNMENT
 TYPE OF CONST DUCT PLACEMENT
 DWG 12 OF 20

VERSION 09/07/2023



SHEET INDEX	
DWG 1 - COVER PAGE	
DWG 2 - BILL OF MATERIALS	
DWG 3 - TYPICAL CONST. DETAILS	
DWG 4 - TYPICAL BOX DETAILS	
DWG 5 TO 20 - CONDUIT DESIGN	



PLACEMENT NOTES:

- ⑨4 SB#5609 17+43 TO
SB#5633 20+38
PL'D ON DWG#12
Ø 1.25" SDR11
PER DETAIL (A/3)
- ⑨5 SB#5633 20+38 TO
RISER POLE
PLACE 15'
Ø 1.25" SDR11
PER DETAIL (A/3) (K/3)
- ⑨6 SB#5633 20+38 TO
FP#27 21+68
PLACE 145'
(4) 1.25" SDR11
PER DETAIL (A/3)
- ⑨7 FP#27 21+68 TO
SB#5697 22+92
PLACE 132'
Ø 1.25" SDR11
PER DETAIL (A/3)
- ⑨8 SB#5697 22+92 TO
SB#5725 25+40
PLACE 260'
Ø 1.25" SDR11
PER DETAIL (A/3)
- ⑨9 SB#5725 25+40 TO
FP#28 25+40
PLACE 50'
Ø 1.25" SDR11
PER DETAIL (A/3) (J/3)
- ⑩0 SB#5725 25+40 TO
SB#5747 28+36
PLACE 305'
Ø 1.25" SDR11
PER DETAIL (A/3)
- ⑩1 SB#5747 28+36 TO
FP#29 28+84
PLACE 52'
Ø 1.25" SDR11
PER DETAIL (A/3)

FROM SB#5609
SEE DWG#12

SEE MATCHLINE

SEE MATCHLINE



844-994-4448

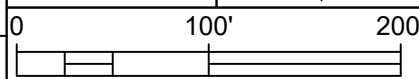
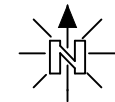
JOB NO. HIDDEN HILLS - PHASE 4
 LOCATION HIDDEN HILLS, CA
 ENGR JOY PADILLA TEL 909-457-8448

SUBJECT
TRENCH ALIGNMENT

TYPE OF CONST
DUCT PLACEMENT

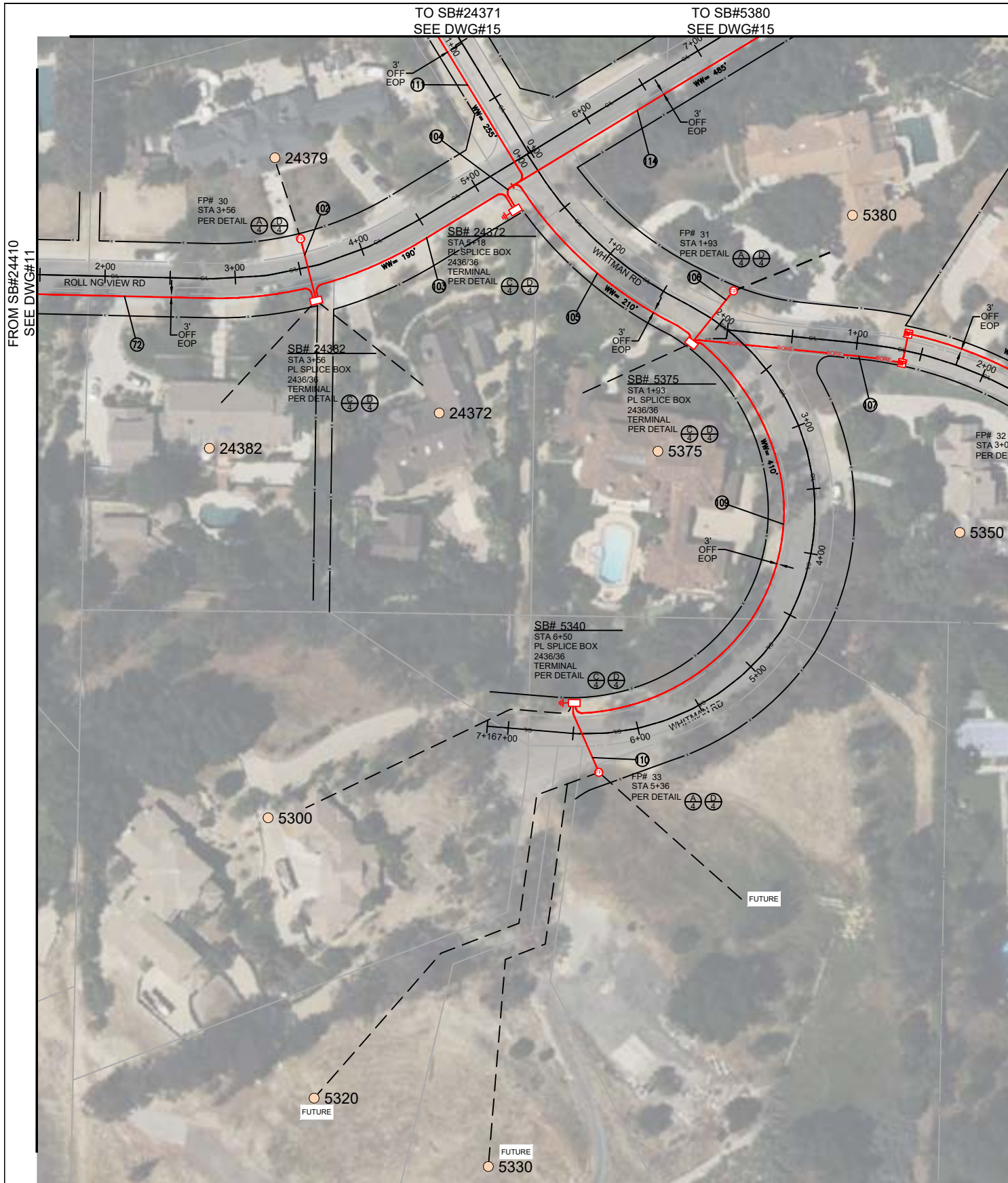
DWG 13 OF 20

VERSION
09/07/2023



SHEET INDEX

- DWG 1 - COVER PAGE
- DWG 2 - BILL OF MATERIALS
- DWG 3 - TYPICAL CONST. DETAILS
- DWG 4 - TYPICAL BOX DETAILS
- DWG 5 TO 20 - CONDUIT DESIGN



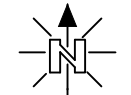
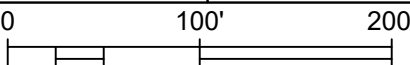
PLACEMENT NOTES:

- | | |
|------------------------------------------------------------------------------------------|------------------------------------------------------------------------------------------------|
| ⑦② SB#24410 0+31 TO SB#24382 3+56
PL'D ON DWG#11
② 1.25" SDR11
PER DETAIL (A/3) | ⑩⑦ SB#5375 1+93 TO SB#5370 3+04
PLACE 360'
② 1.25" SDR11
PER DETAIL (A/3) (C/3) (J/3) |
| ⑩② SB#24382 3+56 TO FP#30 3+56
PLACE 50'
② 1.25" SDR11
PER DETAIL (A/3) (J/3) | ⑩⑧ SB#5370 3+04 TO FP#32 3+04
PLACE 40'
② 1.25" SDR11
PER DETAIL (A/3) (J/3) |
| ⑩③ SB#24382 3+56 TO SB#24372 5+18
PLACE 190'
② 1.25" SDR11
PER DETAIL (A/3) | ⑩⑨ SB#5375 1+93 TO SB#5340 6+50
PLACE 410'
② 1.25" SDR11
PER DETAIL (A/3) |
| ⑩④ SB#24372 5+18 TO TIC MARK 5+21
PLACE 20'
⑥ 1.25" SDR11
PER DETAIL (A/3) | ⑩⑩ SB#5340 6+50 TO FP#33 5+36
PLACE 60'
② 1.25" SDR11
PER DETAIL (A/3) (J/3) |
| ⑩⑤ TIC MARK 5+21 TO SB#5375 1+93
PLACE 190'
② 1.25" SDR11
PER DETAIL (A/3) | ⑩⑪ SB#24372 5+18 TO SB#24370 2+9
PLACE 235'
② 1.25" SDR11
PER DETAIL (A/3) (J/3) |
| ⑩⑥ SB#5375 1+93 TO FP#31 1+93
PLACE 55'
② 1.25" SDR11
PER DETAIL (A/3) (J/3) | ⑩⑭ SB#24372 5+18 TO SB#5380 9+80
PLACE 465'
② 1.25" SDR11
PER DETAIL (A/3) (J/3) |



JOB NO. HIDDEN HILLS - PHASE 4
 LOCATION HIDDEN HILLS, CA
 ENGR JOY PADILLA TEL 909-457-8448

SUBJECT TRENCH ALIGNMENT
 TYPE OF CONST DUCT PLACEMENT
 DWG 14 OF 20

VERSION 09/07/2023



SHEET INDEX
 DWG 1 - COVER PAGE
 DWG 2 - BILL OF MATERIALS
 DWG 3 - TYPICAL CONST. DETAILS
 DWG 4 - TYPICAL BOX DETAILS
 DWG 5 TO 20 - CONDUIT DESIGN



- PLACEMENT NOTES:**
- 111 SB#24372 5+18 TO SB#24370 2+9
PL'D ON DWG#14
Ø 1.25" SDR11 PER DETAIL (A/3) (J/3)
 - 112 SB#24371 2+09 TO FP#34 2+09
PLACE 40'
Ø 1.25" SDR11 PER DETAIL (A/3)
 - 113 SB#24371 2+09 TO FP#35 3+89
PLACE 205'
Ø 1.25" SDR11 PER DETAIL (A/3)
 - 114 SB#24372 5+18 TO SB#5380 9+80
PL'D ON DWG#14
Ø 1.25" SDR11 PER DETAIL (A/3) (J/3)
 - 115 SB#5380 9+80 TO TIC MARK 0+20
PLACE 290'
Ø 1.25" SDR11 PER DETAIL (A/3)
 - 116 TIC MARK 0+20 TO SB#24284 0+72
PLACE 55'
(4) 1.25" SDR11 PER DETAIL (A/3)
 - 117 TIC MARK 0+20 TO SB#24308 1+11
PLACE 135'
Ø 1.25" SDR11 PER DETAIL (A/3) (J/3)
 - 118 SB#24308 1+11 TO FP#37 1+11
PLACE 230'
Ø 1.25" SDR11 PER DETAIL (A/3) (J/3)
 - 119 SB#24308 1+11 TO SB#24328 2+35
PLACE 130'
(3) 1.25" SDR11 PER DETAIL (A/3)
 - 120 SB#24328 2+35 TO FP#38 2+35
PLACE 55'
Ø 1.25" SDR11 PER DETAIL (A/3) (J/3)
 - 121 SB#24328 2+35 TO SB#24342 5+90
PLACE 360'
Ø 1.25" SDR11 PER DETAIL (A/3)
 - 122 SB#24342 5+90 TO FP#39 5+90
PLACE 50'
Ø 1.25" SDR11 PER DETAIL (A/3) (J/3)
 - 123 SB#24342 5+90 TO FP#40 7+72
PLACE 185'
Ø 1.25" SDR11 PER DETAIL (A/3)
 - 124 SB#24284 0+72 TO FP#36 0+72
PLACE 50'
Ø 1.25" SDR11 PER DETAIL (A/3) (J/3)
 - 125 SB#24284 0+72 TO SB#24266 3+84
PLACE 320'
Ø 1.25" SDR11 PER DETAIL (A/3)

FROM SB#24372
SEE DWG#14

FROM SB#24372
SEE DWG#14



JOB NO. HIDDEN HILLS - PHASE 4
 LOCATION HIDDEN HILLS, CA
 ENGR JOY PADILLA TEL 909-457-8448

SUBJECT
TRENCH ALIGNMENT

TYPE OF CONST
DUCT PLACEMENT

DWG 15 OF 20

VERSION
09/07/2023

SHEET INDEX

DWG 1 - COVER PAGE
 DWG 2 - BILL OF MATERIALS
 DWG 3 - TYPICAL CONST. DETAILS
 DWG 4 - TYPICAL BOX DETAILS
 DWG 5 TO 20 - CONDUIT DESIGN

SEE MATCHLINE



SEE MATCHLINE

PLACEMENT NOTES:

- (125) SB#24284 0+72 TO
SB#24266 3+84
PL'D ON DWG#15
Ø 1.25" SDR11
PER DETAIL (A/3)
- (126) SB#24266 3+84 TO
FP#41 4+25
PLACE 90'
Ø 1.25" SDR11
PER DETAIL (A/3) (J/3)
- (127) SB#24266 3+84 TO
SB#24244 5+76
PLACE 200'
Ø 1.25" SDR11
PER DETAIL (A/3)
- (128) SB#24244 5+76 TO
FP#42 5+76
PLACE 55'
Ø 1.25" SDR11
PER DETAIL (A/3) (J/3)
- (129) SB#24244 5+76 TO
FP#43 7+74
PLACE 210'
Ø 1.25" SDR11
PER DETAIL (A/3)



844-994-4448

JOB NO. HIDDEN HILLS - PHASE 4

LOCATION HIDDEN HILLS, CA

ENGR JOY PADILLA

TEL 909-457-8448

SUBJECT

TRENCH ALIGNMENT

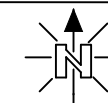
TYPE OF CONST

DUCT PLACEMENT

DWG 16 OF 20

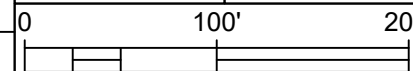
VERSION

09/07/2023



SHEET INDEX

- DWG 1 - COVER PAGE
- DWG 2 - BILL OF MATERIALS
- DWG 3 - TYPICAL CONST. DETAILS
- DWG 4 - TYPICAL BOX DETAILS
- DWG 5 TO 20 - CONDUIT DESIGN





TO SB#5314
SEE DWG#18

PLACEMENT NOTES:

- 134 SB#5388 32+92 TO
TIC MARK 34+29
PL'D ON DWG#10
(3) 1.25" SDR11
PER DETAIL (A/3)
- 135 TIC MARK 34+29 TO
FP#45 34+29
PLACE 45'
(2) 1.25" SDR11
PER DETAIL (A/3) (J/3)
- 136 TIC MARK 34+29 TO
SB#5360 35+56
PLACE 135'
(5) 1.25" SDR11
PER DETAIL (A/3)
- 137 SB#5360 35+56 TO
FP#46 35+56
PLACE 55'
(2) 1.25" SDR11
PER DETAIL (A/3) (J/3)
- 138 SB#5360 35+56 TO
RISER POLE
PLACE 15'
(2) 1.25" SDR11
PER DETAIL (A/3) (K/3)
- 139 SB#5360 35+56 TO
SB#5350 37+70
PLACE 235'
(3) 1.25" SDR11
PER DETAIL (A/3)
- 140 SB#5350 37+70 TO
RISER POLE
PLACE 15'
(2) 1.25" SDR11
PER DETAIL (A/3) (K/3)
- 141 SB#5350 37+70 TO
FP#47 37+70
PLACE 55'
(2) 1.25" SDR11
PER DETAIL (A/3) (J/3)
- 142 SB#5350 37+70 TO
SB#5314 41+56
PLACE 405'
(3) 1.25" SDR11
PER DETAIL (A/3)



844-994-4448

JOB NO. HIDDEN HILLS - PHASE 4

LOCATION HIDDEN HILLS, CA

ENGR JOY PADILLA

TEL 909-457-8448

SUBJECT

TRENCH ALIGNMENT

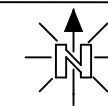
TYPE OF CONST

DUCT PLACEMENT

DWG 17 OF 20

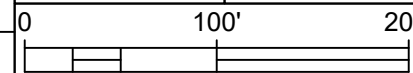
VERSION

09/07/2023



SHEET INDEX

- DWG 1 - COVER PAGE
- DWG 2 - BILL OF MATERIALS
- DWG 3 - TYPICAL CONST. DETAILS
- DWG 4 - TYPICAL BOX DETAILS
- DWG 5 TO 20 - CONDUIT DESIGN



TO SB#5314
SEE DWG#17

PLACEMENT NOTES:

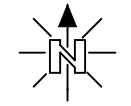
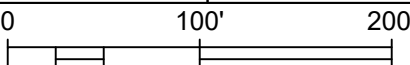


- (142) SB#5350 37+70 TO SB#5314 41+56 PL'D ON DWG#17 (3) 1.25" SDR11 PER DETAIL (A/3)
- (143) SB#5314 41+56 TO RISER POLE PLACE 15' (2) 1.25" SDR11 PER DETAIL (A/3) (K/3)
- (144) SB#5314 41+56 TO FP#48 41+56 PLACE 55' (2) 1.25" SDR11 PER DETAIL (A/3) (J/3)
- (145) SB#5314 41+56 TO SB#5290 43+42 PLACE 210' (3) 1.25" SDR11 PER DETAIL (A/3)
- (146) SB#5290 43+42 TO RISER POLE PLACE 15' (2) 1.25" SDR11 PER DETAIL (A/3) (K/3)
- (147) SB#5290 43+42 TO FP#49 43+42 PLACE 55' (2) 1.25" SDR11 PER DETAIL (A/3) (J/3)
- (148) SB#5290 43+42 TO SB#5270 45+39 PLACE 218' (3) 1.25" SDR11 PER DETAIL (A/3)
- (149) SB#5270 45+39 TO RISER POLE PLACE 15' (2) 1.25" SDR11 PER DETAIL (A/3) (K/3)
- (150) SB#5270 45+39 TO FP#50 45+39 PLACE 55' (2) 1.25" SDR11 PER DETAIL (A/3) (J/3)
- (151) SB#5270 45+39 TO TIC MARK 47+57 PLACE 228' (3) 1.25" SDR11 PER DETAIL (A/3) (J/3)
- (152) TIC MARK 47+57 SB#24630 47+84 PLACE 40' (5) 1.25" SDR11 PER DETAIL (A/3)
- (153) TIC MARK 47+57 TO FP#52 3+85 PLACE 380' (2) 1.25" SDR11 PER DETAIL (A/3)
- (154) FP#52 3+85 TO SB#24580 5+65 PLACE 185' (3) 1.25" SDR11 PER DETAIL (A/3)
- (155) SB#24580 5+65 TO RISER POLE PLACE 15' (2) 1.25" SDR11 PER DETAIL (A/3) (K/3)
- (156) SB#24580 5+65 TO FP#53 5+55 PLACE 50' (2) 1.25" SDR11 PER DETAIL (A/3) (J/3)
- (157) SB#24580 5+65 TO FP#54 7+37 PLACE 175' (2) 1.25" SDR11 PER DETAIL (A/3)
- (158) FP#54 7+37 TO SB#24540 6+63 PLACE 245' (3) 1.25" SDR11 PER DETAIL (A/3)
- (159) SB#24540 6+63 TO TIC MARK 9+88 PLACE 30' (4) 1.25" SDR11 PER DETAIL (A/3)
- (160) TIC MARK 9+88 TO SB#5250 PLACE 175' (2) 1.25" SDR11 PER DETAIL (A/3) (B/3)
- (161) TIC MARK 9+88 TO SB#24500 11+06 PLACE 130' (2) 1.25" SDR11 PER DETAIL (A/3)
- (162) SB#24500 11+06 TO FP#55 11+06 PLACE 35' (2) 1.25" SDR11 PER DETAIL (A/3) (J/3)
- (163) SB#24500 11+06 TO FP#56 12+50 PLACE 145' (2) 1.25" SDR11 PER DETAIL (A/3)
- (164) FP#56 12+50 TO FP#57 12+50 PLACE 35' (2) 1.25" SDR11 PER DETAIL (A/3) (J/3)
- (165) SB#24630 47+84 TO RISER POLE PLACE 15' (2) 1.25" SDR11 PER DETAIL (A/3) (K/3)
- (166) SB#24630 47+84 TO FP#51 47+84 PLACE 55' (2) 1.25" SDR11 PER DETAIL (A/3) (J/3)
- (167) SB#24630 47+84 TO SB#5210 49+73 PLACE 210' (3) 1.25" SDR11 PER DETAIL (A/3)



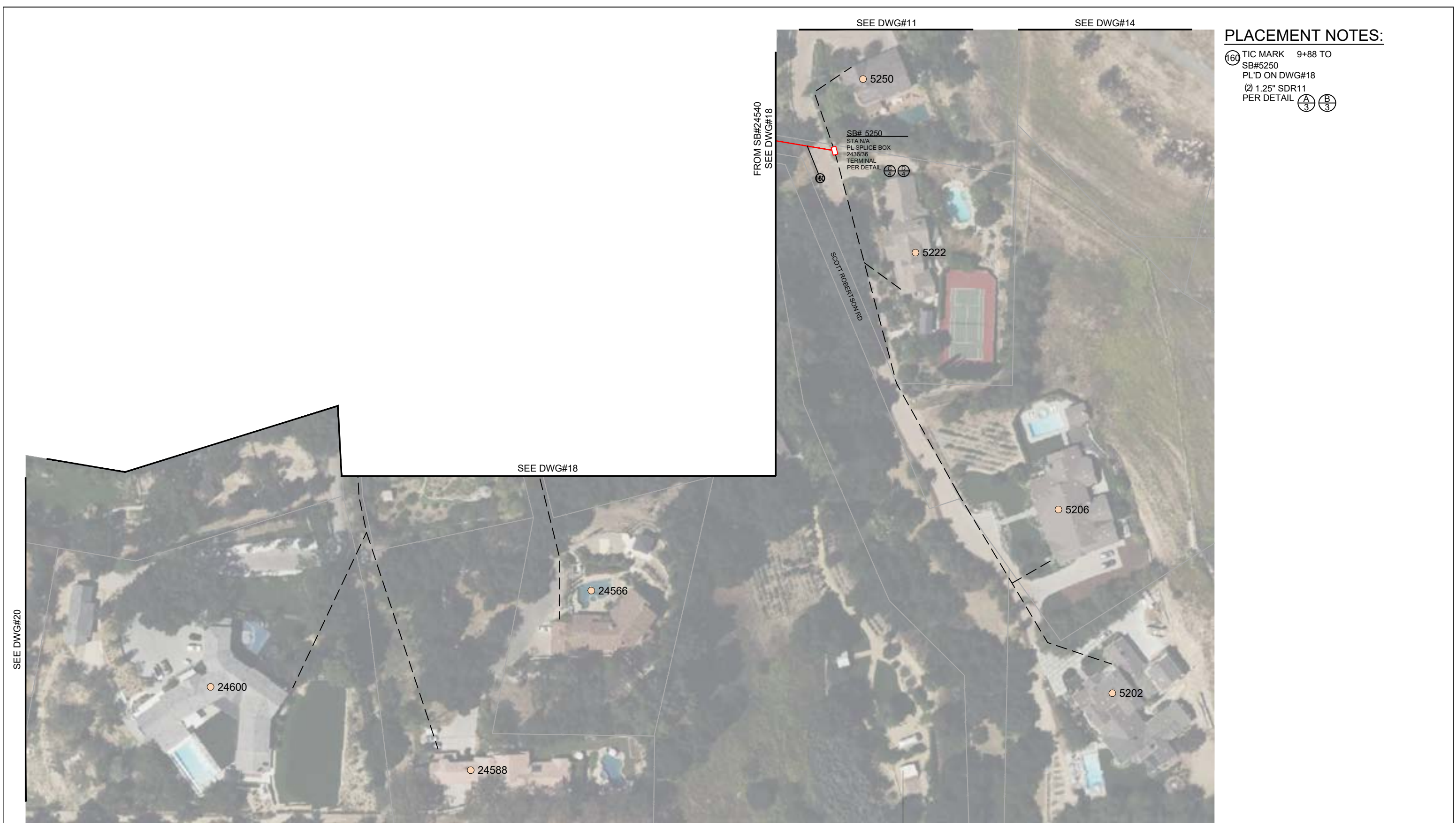
JOB NO. HIDDEN HILLS - PHASE 4
 LOCATION HIDDEN HILLS, CA
 ENGR JOY PADILLA TEL 909-457-8448

SUBJECT TRENCH ALIGNMENT
 TYPE OF CONST DUCT PLACEMENT
 DWG 18 OF 20

VERSION 09/07/2023



SHEET INDEX

DWG 1 - COVER PAGE
DWG 2 - BILL OF MATERIALS
DWG 3 - TYPICAL CONST. DETAILS
DWG 4 - TYPICAL BOX DETAILS
DWG 5 TO 20 - CONDUIT DESIGN



PLACEMENT NOTES:
 (160) TIC MARK 9+88 TO
 SB#5250
 PL'D ON DWG#18
 (2) 1.25" SDR11
 PER DETAIL (A/3) (B/3)

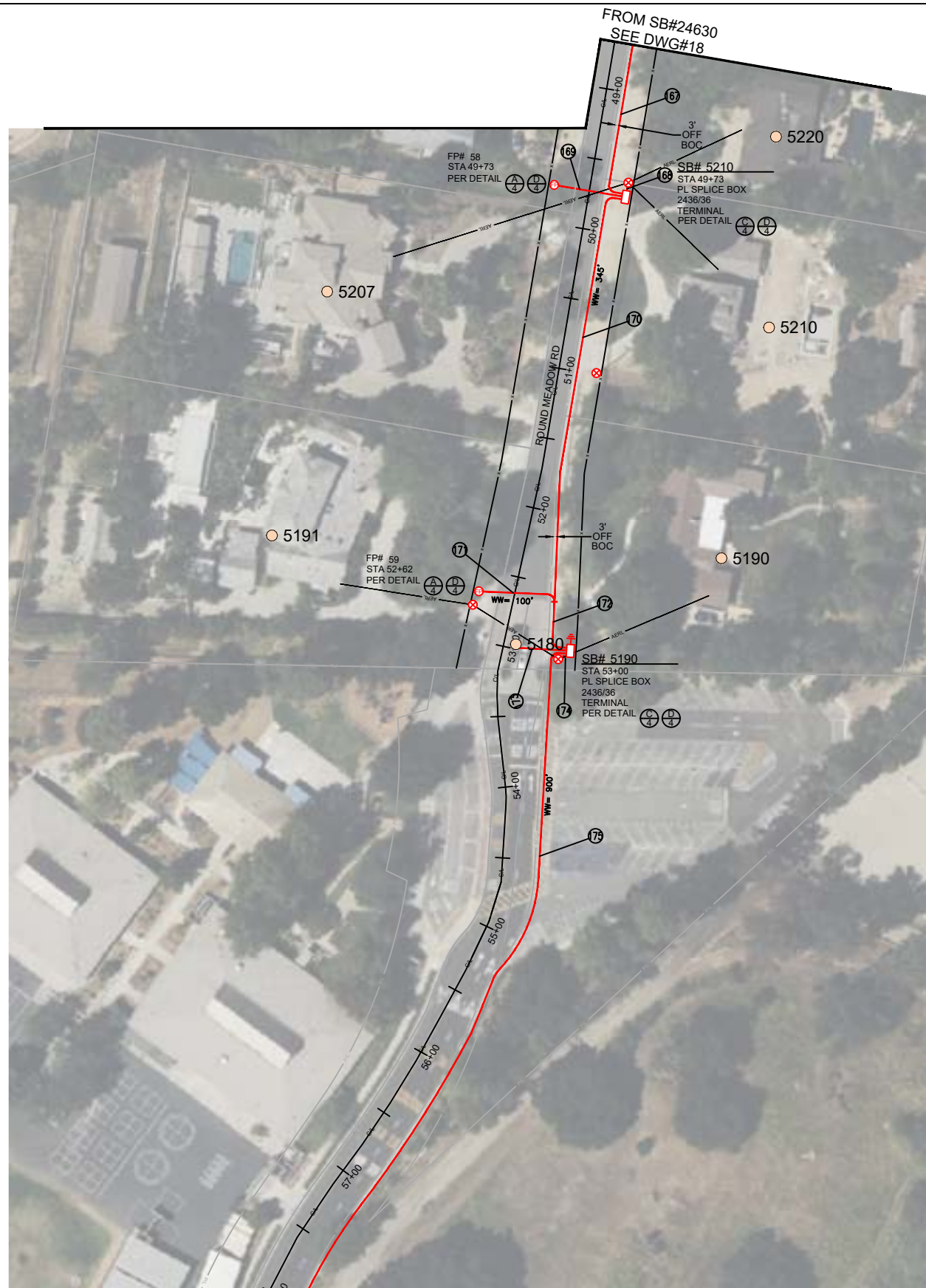


JOB NO. HIDDEN HILLS - PHASE 4
 LOCATION HIDDEN HILLS, CA
 ENGR JOY PADILLA TEL 909-457-8448

SUBJECT TRENCH ALIGNMENT
 TYPE OF CONST DUCT PLACEMENT
 DWG 19 OF 20

VERSION 09/07/2023
 0 100' 200'

SHEET INDEX	
DWG 1 - COVER PAGE	
DWG 2 - BILL OF MATERIALS	
DWG 3 - TYPICAL CONST. DETAILS	
DWG 4 - TYPICAL BOX DETAILS	
DWG 5 TO 20 - CONDUIT DESIGN	



PLACEMENT NOTES:

- (167) SB#24630 47+84 TO SB#5210 49+73
PL'D ON DWG#18
(3) 1.25" SDR11
PER DETAIL (A/3)
- (168) SB#5210 49+73 TO RISER POLE
PLACE 15'
(2) 1.25" SDR11
PER DETAIL (A/3)
- (169) SB#5210 49+73 TO FP#58 49+73
PLACE 55'
(2) 1.25" SDR11
PER DETAIL (A/3)
- (170) SB#5210 49+73 TO TIC MARK 52+62
PLACE 300'
(3) 1.25" SDR11
PER DETAIL (A/3)
- (171) TIC MARK 52+62 TO FP#59 52+62
PLACE 55'
(2) 1.25" SDR11
PER DETAIL (A/3)
- (172) TIC MARK 52+62 TO SB#5190 53+00
PLACE 45'
(5) 1.25" SDR11
PER DETAIL (A/3)
- (173) SB#5190 53+00 TO GUARD SHACK 53+00
PLACE 40'
(1) 1.25" SDR11
PER DETAIL (A/3)
- (174) SB#5190 53+00 TO RISER POLE
PLACE 15'
(2) 1.25" SDR11
PER DETAIL (A/3)
- (175) SB#5190 53+00 TO SB#1 61+77
PLACE 900'
(3) 1.25" SDR11
PER DETAIL (A/3)

SEE MATCHLINE



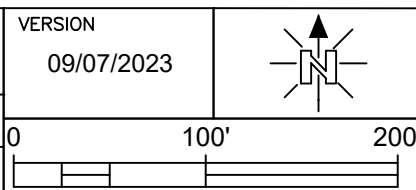
844-994-4448

JOB NO. HIDDEN HILLS - PHASE 4
 LOCATION HIDDEN HILLS, CA
 ENGR JOY PADILLA TEL 909-457-8448

SUBJECT
TRENCH ALIGNMENT

TYPE OF CONST
DUCT PLACEMENT

DWG 20 OF 20



SHEET INDEX	
DWG 1 - COVER PAGE	
DWG 2 - BILL OF MATERIALS	
DWG 3 - TYPICAL CONST. DETAILS	
DWG 4 - TYPICAL BOX DETAILS	
DWG 5 TO 20 - CONDUIT DESIGN	