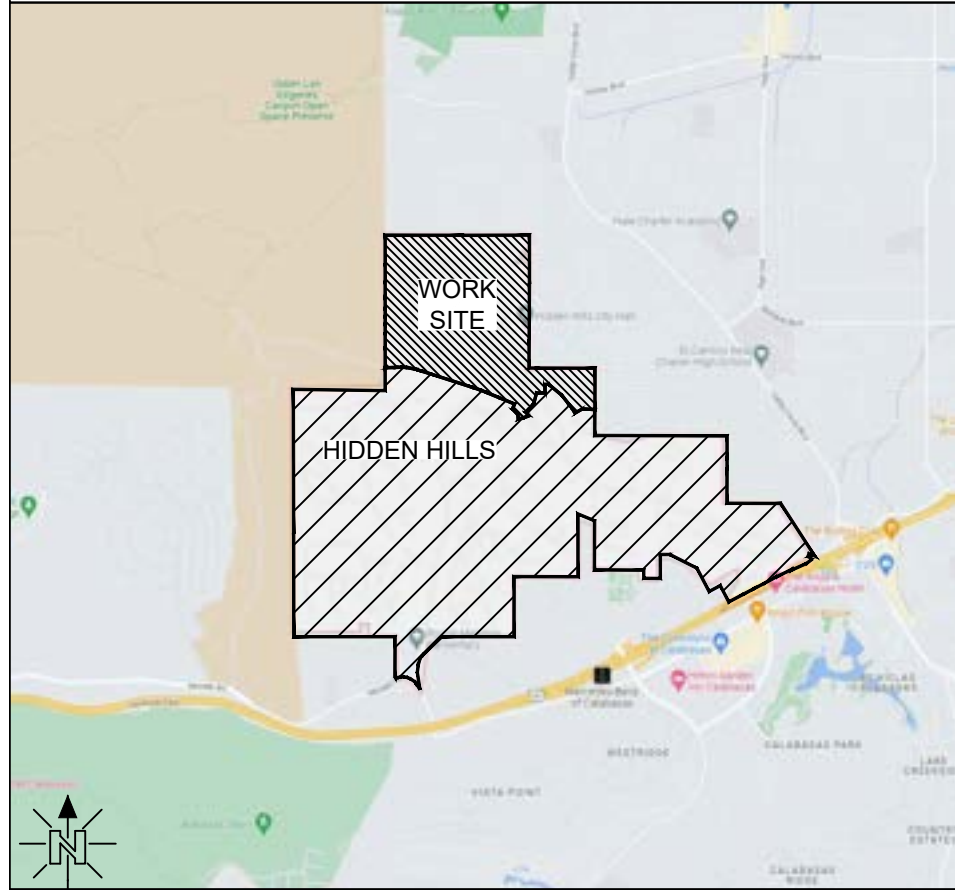


JOB DESCRIPTION

THIS JOB WILL PLACE (46,408') 1.25" SDR11 CONDUIT, (45) 24X36X36 SPLICE BOXES, (3) 11x18x12 PULLBOXES, AND (47) 10X10X12 FLOWER POTS TO SERVE 131 SFU IN PHASE 3 OF HIDDEN HILLS.

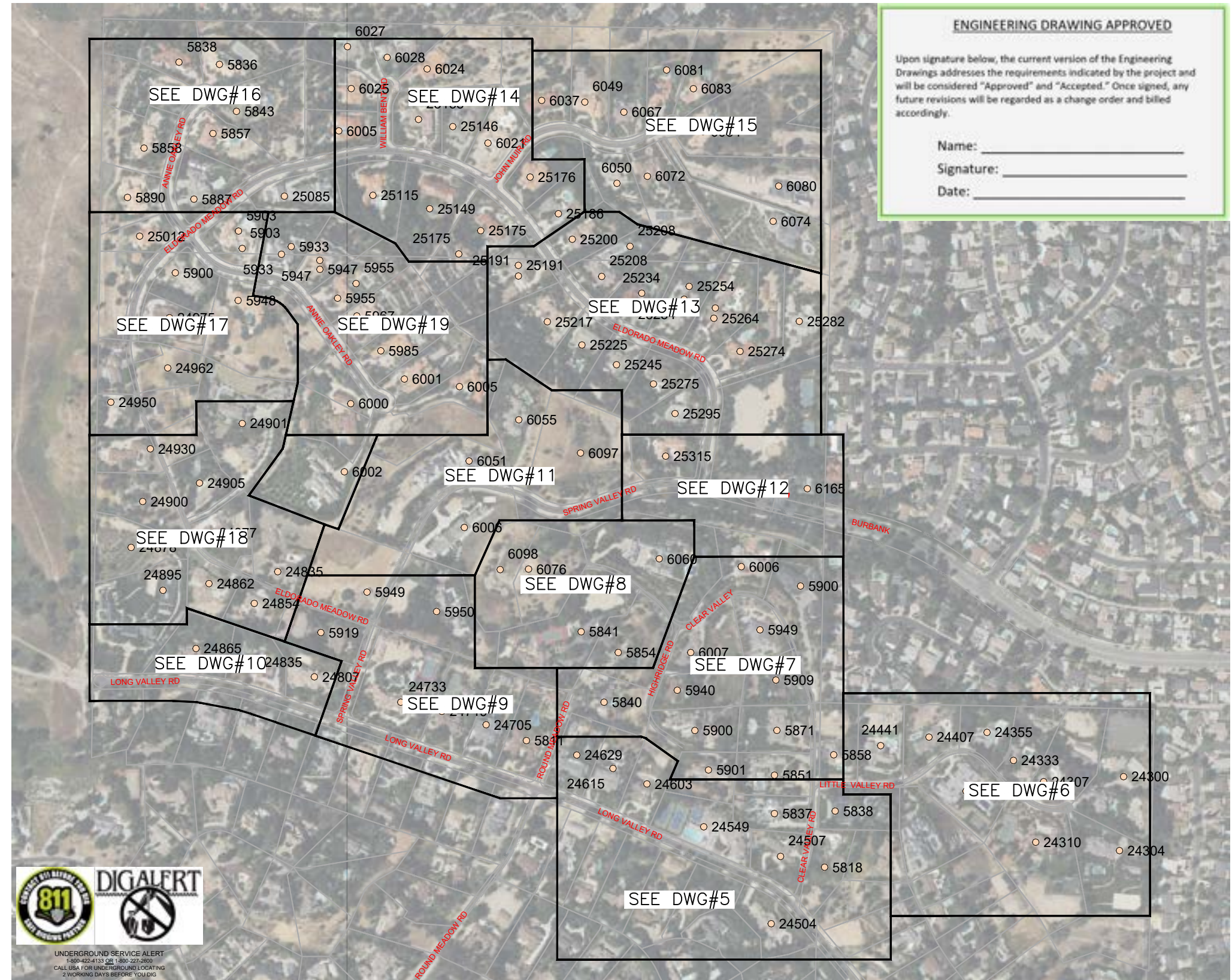
VICINITY MAP
N.T.S.



LEGEND

TELCO MANHOLE	BORE PIT	FIRE HYDRANT
TELCO VAULT	BRASS CAP	GAS VALVE
TELCO BOX	CATV PED	STREET LIGHT
FLOWER POT	CULVERT	SEWER MANHOLE
TELCO X-BOX	ELEC CABINET	STORM DRAIN
SOLELY OWNED POLE	ELEC MANHOLE	WATER MANHOLE
JOINT POLE	ELEC TRANSFORMER	WATER METER
ANCHOR	ELEC J-BOX	WATER VALVE
BORE	FENCE LINE	x
DUCT - NEW	GAS	G
DUCT - NEW + SERVICE	IRRIGATION	IRRG
DUCT - EXISTING	PROPERTY LINE	P/L
DUCT - FUTURE	UTILITY EASEMENT	PUE
SERVICE - AERIAL	RIGHT OF WAY	ROW
ELECTRICAL	SEWER	S
CABLE TV	STORM DRAIN	SD
CENTERLINE	TELEPHONE	T
BACK OF CURB	WATER	W

HIDDEN HILLS PHASE 3 - 131 SFU



ENGINEERING DRAWING APPROVED

Upon signature below, the current version of the Engineering Drawings addresses the requirements indicated by the project and will be considered "Approved" and "Accepted." Once signed, any future revisions will be regarded as a change order and billed accordingly.

Name: _____

Signature: _____

Date: _____



JOB NO. HIDDEN HILLS - PHASE 3
 LOCATION HIDDEN HILLS, CA
 ENGR JOY PADILLA TEL 909-457-8448

SUBJECT
COVER SHEET
 TYPE OF CONST
DUCT PLACEMENT
 DWG 1 OF 19

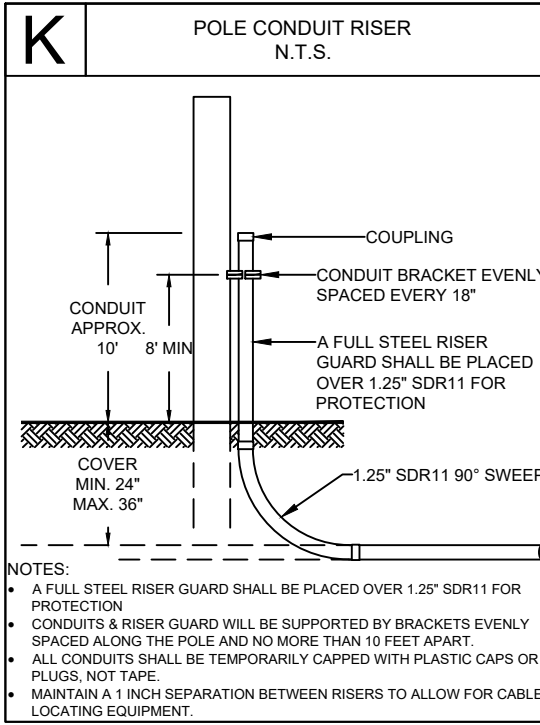
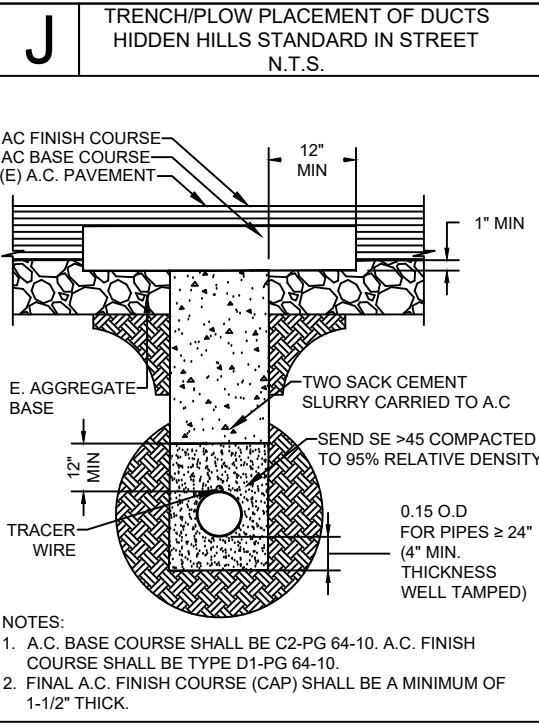
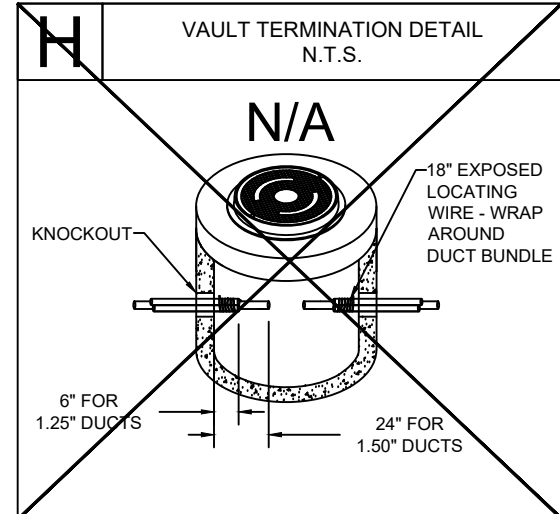
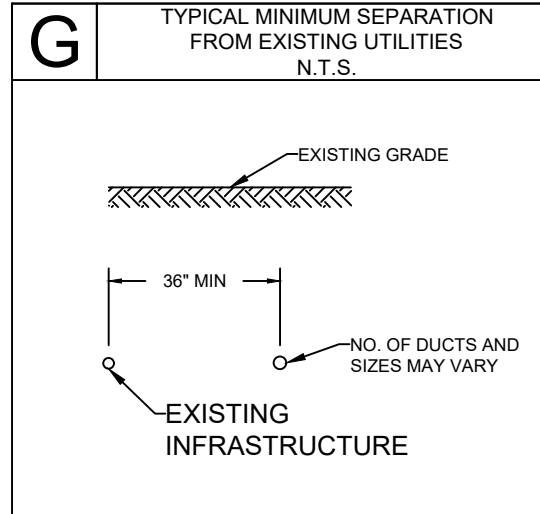
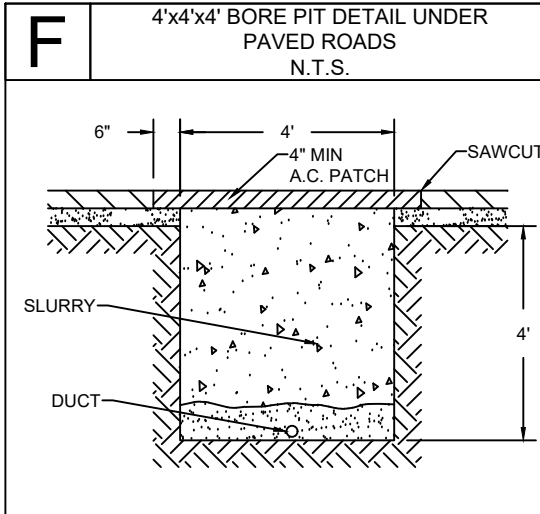
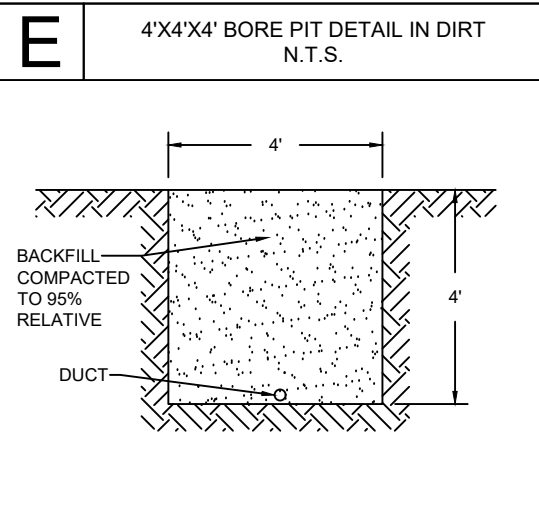
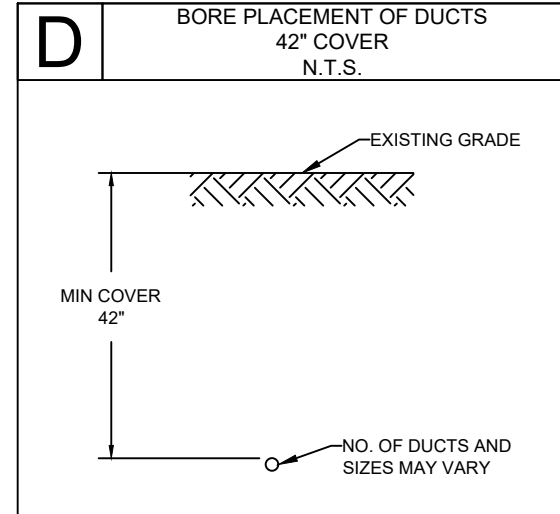
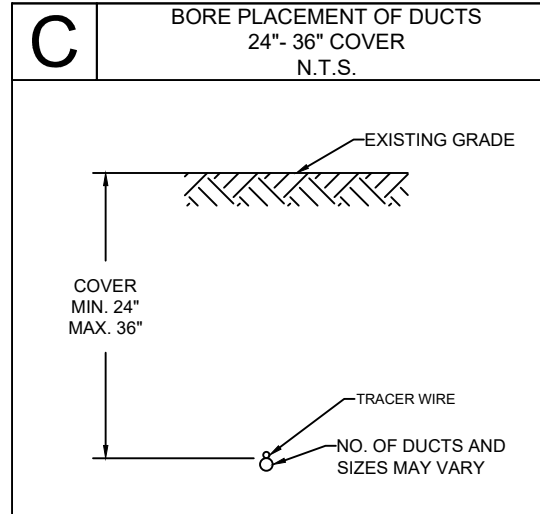
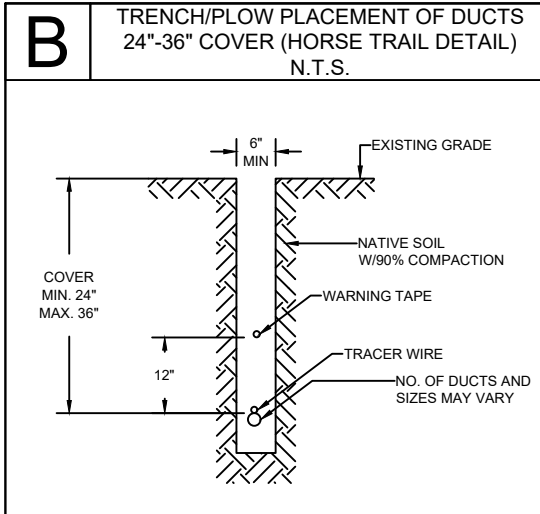
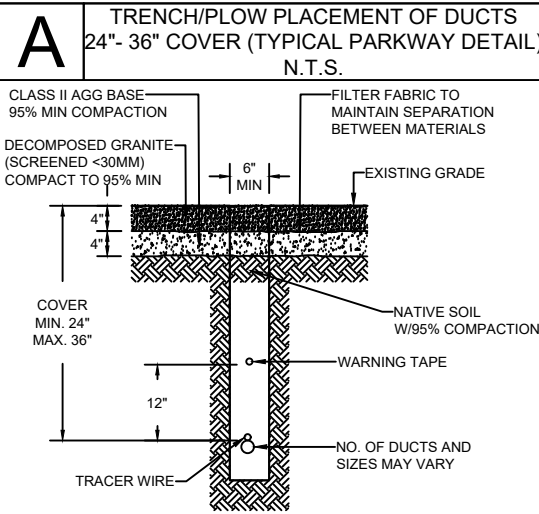
VERSION
09/07/2023
CONFIDENTIAL AND PROPRIETARY INFORMATION
 THE INFORMATION CONTAINED HEREIN, IS NOT FOR USE OR
 DISCLOSURE OUTSIDE INYO NETWORKS, INC. OR THEIR
 AFFILIATED COMPANIES EXCEPT UNDER WRITTEN AGREEMENT

SHEET INDEX

DWG 1 - COVER PAGE
DWG 2 - BILL OF MATERIALS
DWG 3 - TYPICAL CONST. DETAILS
DWG 4 - TYPICAL BOX DETAILS
DWG 5 TO 19 - CONDUIT DESIGN

CONSTRUCTION NOTES

1. THE LOCATION OF EXISTING UTILITIES ARE FOR REFERENCE AND ARE SHOWN IN THEIR APPROXIMATE LOCATION ONLY. EXACT LOCATIONS MUST BE LOCATED BY UNDERGROUND SERVICE ALERT BEFORE ANY DIGGING.
2. THE CONTRACTOR SHALL HAVE A COPY OF THE APPROVED CONSTRUCTION PLANS AND APPROVED TRAFFIC CONTROL PLAN AT THE PROJECT SITE AT ALL TIMES.
3. ALL UTILITIES CROSSING EXISTING CITY STREETS MUST BE BORED OR PUNCHED, UNLESS PERMISSION TO OPEN CUT HAS BEEN GIVEN IN WRITING BY THE CITY ENGINEER OR HIS AUTHORIZED REPRESENTATIVE. BEFORE STARTING ANY STREET BORE THAT CROSSES A MAJOR ROADWAY. THE CONTRACTOR MUST SCHEDULE A SEPARATE FIELD MEETING WITH THE PROJECT INSPECTOR TO VERIFY THAT ALL UNDERGROUND SERVICE ALERT AND DESIGN REQUIREMENTS ARE MET.
4. THE UTILITY COMPANY SHALL CALL THE ENGINEERING DIVISION 24 HOURS IN ADVANCE OF STARTING WORK GIVING LOCATION AND PERMIT NUMBER IN ORDER TO SCHEDULE INSPECTIONS. STATUS UPDATES SHALL BE MADE WEEKLY.
5. ALIGNMENT ON PLANS MAY NOT DEVIATE MORE THAN 1' WITHOUT GETTING THE APPROVAL OF THE GOVERNING AGENCY.
6. ALL WORK REQUIRING ASPHALT REPLACEMENT, CONCRETE REPLACEMENT OR RESURFACING IN CITY RIGHT OF WAY WILL REQUIRE A FINAL INSPECTION WITH THE UTILITY COMPANY REPRESENTATIVE AT TIME OF COMPLETION.
7. ALL STREET EXCAVATIONS SHALL BE TWO SACK SLURRY BACK FILLED. PAVED STREETS AND DRIVEWAYS SHALL BE REPAVED IN A MANNER THAT MATCHES THE PAVEMENT PRIOR TO CONSTRUCTION. ANY TRENCHES ON PRIVATE PROPERTY DO NOT REQUIRE SLURRY BACKFILL BUT ARE REQUIRED TO COMPACT TO 90%.
8. PROTECTIVE DEVICES ARE REQUIRED! THESE PROTECTIVE DEVICES INCLUDE, ORANGE VEST (DAYTIME), REFLECTIVE ORANGE VEST (NIGHTTIME), TRAFFIC CONES, BARRICADES FLASHING LIGHTS, FLARES, AND ANY OTHER TRAFFIC CONTROL DEVICE AS REQUIRED.
9. THE CONTRACTOR WILL SUBMIT A TRAFFIC CONTROL PLAN AS PART OF THE CONSTRUCTION PERMIT APPLICATION FOR ACTIVITIES ALONG STATE HIGHWAYS AND COUNTY ROADS. THE PLAN MUST FOLLOW THE RULES AND REGULATIONS OF THE GOVERNING AGENCY AND BE CONSISTENT WITH CONTRACTOR CONSTRUCTION METHODS AND ALL PLANNED ACTIVITIES ALONG STATE HIGHWAY AND COUNTY ROADS.
10. THE TRENCH BOTTOM SHALL BE SMOOTH, FLAT, AND WITHOUT SURFACE IRREGULARITIES; OTHERWISE, A SUFFICIENT AMOUNT OF BEDDING MATERIAL SHALL BE INSTALLED TO PROVIDE THE REQUIRED SURFACE. MAINTAIN A MINIMUM OF 36" COVER WITH 6" BACK FILL FREE OF DEBRIS, ROCKS AND CLODS.
11. ALL CONDUIT TO HAVE MINIMUM 24" COVER UNLESS OTHERWISE NOTED ON DRAWING SHEETS.
12. ROW DEPICTED ON THESE DRAWINGS HAVE NOT BEEN SURVEYED AND ARE REPRESENTED USING AVAILABLE RECORDS AND FIELD ARTIFACTS.



SPANDREL NOTE:
DO NOT CUT ANY SPANDRELS UNLESS ABSOLUTELY REQUIRED. IF POTHOLING IS REQUIRED, RESTORE AREA TO LIKE OR NEW CONDITION



844-994-4448

JOB NO. HIDDEN HILLS - PHASE 3

LOCATION HIDDEN HILLS, CA

ENGR JOY PADILLA

TEL 909-457-8448

SUBJECT

TYPICAL CONSTRUCTION DETAILS

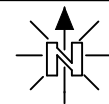
TYPE OF CONST

DUCT PLACEMENT

DWG 3 OF 19

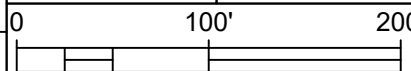
VERSION

09/07/2023



SHEET INDEX

- DWG 1 - COVER PAGE
- DWG 2 - BILL OF MATERIALS
- DWG 3 - TYPICAL CONST. DETAILS
- DWG 4 - TYPICAL BOX DETAILS
- DWG 5 TO 19 - CONDUIT DESIGN



A 1010/12 FLOWERPOT DETAIL

SKU: 10005049

Compare to: Christy G05T

MARKING OPTION CODES:
 -00 BLANK
 -11 WATER
 -13 SEWER
 -14 GROUND ROD

Hardware:
 • Cast Iron Bolt Down Lid HTV10-S-CL
 • Bolt down recommended for high traffic areas.
 • (2) 1/4" x 1" SS Screws (included)
 • Traffic Valve Box HTV10-S-BD
 • 10" Dia. x 12" (NOMINAL I.D.)

MODEL NO.	PRODUCT	DESCRIPTION	APPROX. WEIGHT	QTY PER PALLET
HTV10-S-CL-1	LID	10"x12" Traffic Valve Box Cover - Import	14	N/A
HTV10-S-BD-1	VALVE BOX	10"x12" Traffic Valve Box - Import	63	36
HTV10-S-CL-USA	LID	10"x12" Traffic Valve Box Cover - USA	14	N/A
HTV10-S-BD-USA	VALVE BOX	10"x12" Traffic Valve Box - USA	14	36

B 1118/12 TIER 22 HANDHOLE DETAIL

SKU: 200059176

Hardware:
 • Stainless Steel 1/2" and 3/4" Hex Head Standard Bolts
 • Penta Head Bolts
 • One Way Security Bolts
 • Security Torque Bolts

Options:
 • Standard and custom Nameplates
 • Mouse Holes
 • Knock Outs
 • Power EMS Cover
 • AMR Cover

Load Ratings:
 • ANSI/SCTE77 Tier 15 & Tier 22
 • WUC 3.6

Boxes are Open Bottom and Stackable

PART NO.	DESCRIPTION	APPROX. WEIGHT LBS.	QTY. PER PALLET
200016525	HPC 1118-12 Straight Wall Polymer Concrete Handhole Box w/ 1/2-19 SS Nut	56.00	1
200016489	HPC 1118-12 Configurable TIER-22 Solid Polymer Concrete Handhole Cover	NA	1

C 2436/36 TIER 22 HANDHOLE DETAIL

SKU: 200059032

Hardware:
 • Stainless Steel 1/2" and 3/4" Hex Head Standard Bolts
 • Penta Head Bolts
 • One Way Security Bolts
 • Security Torque Bolts

Options:
 • Standard and custom Nameplates
 • Mouse Holes
 • Knock Outs
 • Power EMS Cover
 • AMR Cover

Load Ratings:
 • ANSI/SCTE77 Tier 15 & Tier 22
 • WUC 3.6

Boxes are Open Bottom and Stackable

PART NO.	DESCRIPTION	APPROX. WEIGHT LBS.	QTY. PER PALLET
200022186	HPC 2436-36 Straight Wall Polymer Concrete Handhole Box w/ 1/2-19 SS Nut	86	1
100032420	HPC 2436-36 Bolt Down TIER-22 Solid Polymer Concrete Handhole Cover BLANK	NA	1

D FLOWERPOT & HANDHOLE OFFSET DETAIL

NOTES:
 • HANDHOLE AND FLOWERPOT OFFSETS ARE MEASURED FROM CENTER OF HANDHOLE/FLOWERPOT.
 • HANDHOLE AND FLOWERPOT OFFSETS ARE 4' OFF FENCE. IF NO FENCE IS AVAILABLE, USE PROPERTY LINE.
 • IN LOCATIONS WHERE 4' OFFSET FROM FENCE/PROPERTY LINE IS NOT FEASIBLE DUE TO SPACE RESTRICTION, PLACE EDGE OF HANDHOLE/FLOWERPOT AGAINST FENCE/PROPERTY LINE.
 • DO NOT PLACE ANY HANDHOLE/FLOWERPOT IN THE STREET. ALL HANDHOLE/FLOWERPOT SHALL BE PLACED IN THE SHOULDER WITHIN THE PUE.
 • TRENCHLINE OFFSETS ARE VARIABLE AND ARE NOTED ON APPLICABLE DRAWINGS.

FROM FENCE/PL TO CENTER OF BOX IS A 4' OFFSET

1010/12 FLOWERPOT
 1118/12 TIER 22 HANDHOLE
 2436/36 TIER 22 HANDHOLE

TRENCH OFFSET IS VARIABLE, SEE DRAWINGS

FROM FENCE/PL TO CENTER OF BOX IS A 4' OFFSET

1010/12 FLOWERPOT
 1118/12 TIER 22 HANDHOLE
 2436/36 TIER 22 HANDHOLE

TRENCH OFFSET IS VARIABLE, SEE DRAWINGS

FROM FENCE/PL TO CENTER OF BOX IS A 4' OFFSET

1010/12 FLOWERPOT
 1118/12 TIER 22 HANDHOLE

E 1730 HANDHOLE DETAIL

17" x 30" x 11" (INSIDE DIMENSIONS)
 MEETS CALTRANS # 6T
 NDOT #7, ADOT #7 SPECIFICATIONS

DESIGN LOAD: H-20 FULL TRAFFIC

CATALOG NUMBER	PRODUCT	DESCRIPTION	APPROX. WT. (LBS.)
CYB1730	BOX WITH SLAB	REINFORCED CONCRETE	288
CY1730SL	COVER	STEEL CHECKER PLATE	112
CY1730EXT	EXTENSION	12" HIGH REINFORCED CONCRETE	244
CYHDB1730	HOLD DOWN BOLT	HOLD DOWN PENTAHEAD BOLT (2 EA.)	

F 3048 HANDHOLE DETAIL

WHEN ORDERING:
 THE STANDARD SBC AR3048 KIT INCLUDES THE AR3048 BOX, (2) AR3048 EXTENSIONS, AR3048 LID, AND THE AR3048 SLAB. FOR OTHER COMPONENTS, ORDER BY CATALOG NUMBER.

DESIGN LOAD: LIGHT VEHICULAR TRAFFIC, 10,000 WHEEL LOAD

CATALOG NUMBER	PRODUCT	DESCRIPTION	APPROX. WT. (LBS.)
AR3048	BOX	POLYMER CONCRETE 18"	190 LBS.
AR304802TELE	LID	POLYMER CONCRETE 3"	94 LBS.
AR3048EX	EXTENSION	POLYMER CONCRETE 12"	136 LBS.
AR3048SL	SLAB	POLYMER CONCRETE 2"	120 LBS.



JOB NO. HIDDEN HILLS - PHASE 3

LOCATION HIDDEN HILLS, CA

ENGR JOY PADILLA TEL 909-457-8448

SUBJECT TYPICAL BOX DETAILS

TYPE OF CONST DUCT PLACEMENT

DWG 4 OF 19

VERSION 09/07/2023

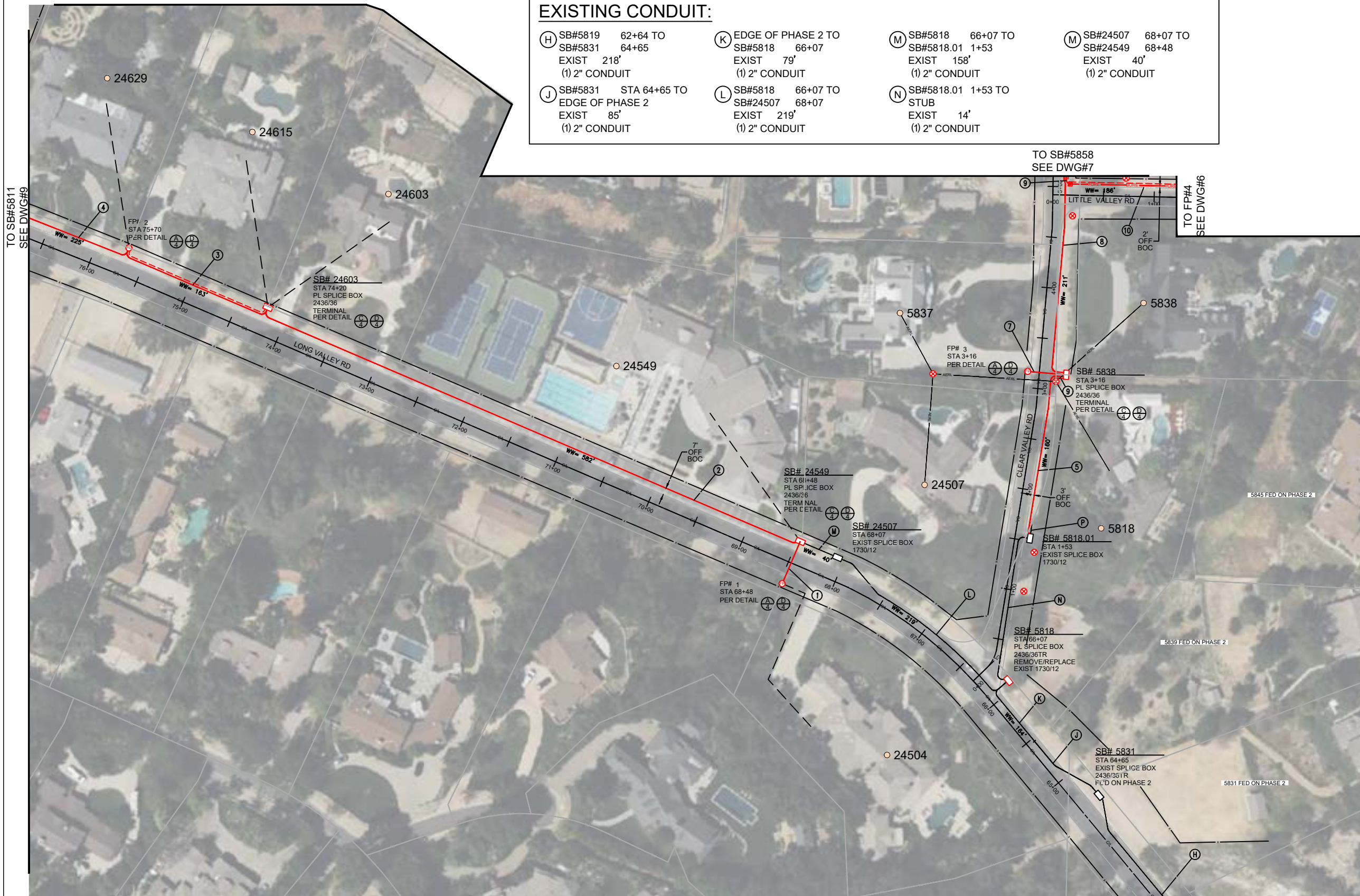
SHEET INDEX

DWG 1 - COVER PAGE
DWG 2 - BILL OF MATERIALS
DWG 3 - TYPICAL CONST. DETAILS
DWG 4 - TYPICAL BOX DETAILS
DWG 5 TO 19 - CONDUIT DESIGN

EXISTING CONDUIT:			
(H) SB#5819 SB#5831	62+64 TO 64+65	EXIST 218'	(1) 2" CONDUIT
(J) SB#5831	STA 64+65 TO EDGE OF PHASE 2	EXIST 85'	(1) 2" CONDUIT
(K) EDGE OF PHASE 2 TO SB#5818	66+07 TO 66+07	EXIST 79'	(1) 2" CONDUIT
(L) SB#5818 SB#24507	66+07 TO 68+07	EXIST 219'	(1) 2" CONDUIT
(M) SB#5818 SB#5818.01	66+07 TO 1+53	EXIST 158'	(1) 2" CONDUIT
(N) SB#5818.01	1+53 TO STUB	EXIST 14'	(1) 2" CONDUIT
(M) SB#24507 SB#24549	68+07 TO 68+48	EXIST 40'	(1) 2" CONDUIT

PLACEMENT NOTES:

- ① SB#24549 68+48 TO
FP#1 68+48
PLACE 45'
② 1.25" SDR11
PER DETAIL (A/3) (J/3)
- ② SB#24549 68+48 TO
SB#24603 74+20
PLACE 582'
③ 1.25" SDR11
PER DETAIL (A/3)
- ③ SB#24603 74+20 TO
FP#2 75+70
PLACE 163'
④ 1.25" SDR11
PER DETAIL (A/3)
- ④ FP#2 75+70 TO
TIC MARK 77+68
PLACE 210'
③ 1.25" SDR11
PER DETAIL (A/3)
- ⑤ SB#5818.01 1+53 TO
SB#5838 3+16
PLACE 160'
② 1.25" SDR11
PER DETAIL (A/3)
- ⑥ SB#5838 3+16 TO
RISER POLE
PLACE 10'
② 1.25" SDR11
PER DETAIL (A/3) (K/3)
- ⑦ SB#5838 3+16 TO
FP#3 3+16
PLACE 45'
② 1.25" SDR11
PER DETAIL (A/3) (J/3)
- ⑧ SB#5838 3+16 TO
SB#5858 5+25
PLACE 211'
② 1.25" SDR11
PER DETAIL (A/3) (J/3)
- ⑨ SB#5858 5+25 TO
BORE PIT
PLACE 24'
③ 1.25" SDR11
PER DETAIL (A/3)
- ⑩ BORE PIT TO
FP#4 1+78
PLACE 162'
③ 1.25" SDR11
PER DETAIL (C/3)



JOB NO. HIDDEN HILLS - PHASE 3
 LOCATION HIDDEN HILLS, CA
 ENGR JOY PADILLA TEL 909-457-8448

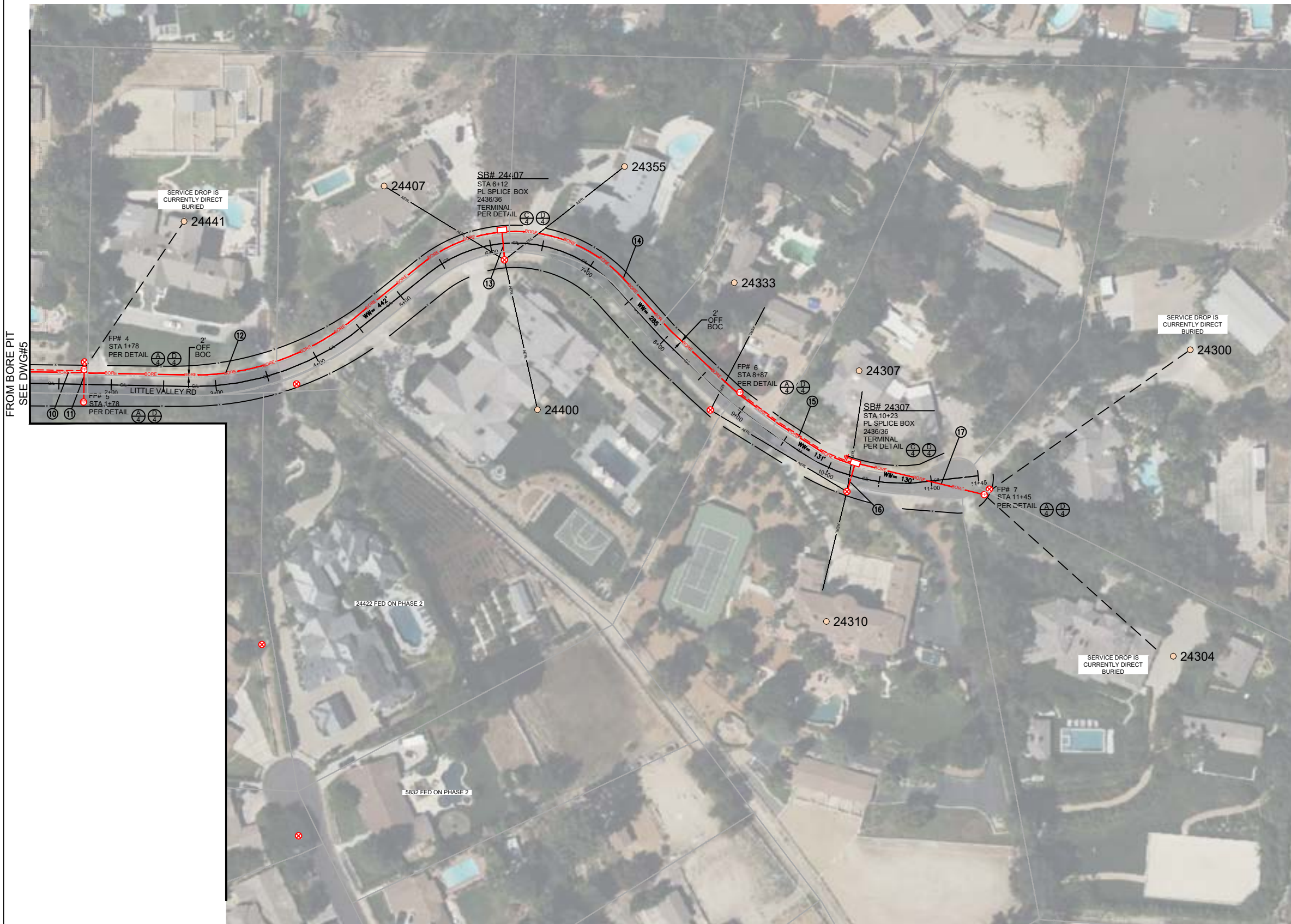
SUBJECT
TRENCH ALIGNMENT

TYPE OF CONST
DUCT PLACEMENT

DWG 5 OF 19

VERSION
09/07/2023

SHEET INDEX	
DWG 1 - COVER PAGE	
DWG 2 - BILL OF MATERIALS	
DWG 3 - TYPICAL CONST. DETAILS	
DWG 4 - TYPICAL BOX DETAILS	
DWG 5 TO 19 - CONDUIT DESIGN	



PLACEMENT NOTES:

- ⑩ BORE PIT TO
FP#4 1+78
PL'D ON DWG#5
③ 1.25" SDR11
PER DETAIL (C/3)
- ⑪ FP#4 1+78 TO
FP#5 1+78
PLACE 45'
② 1.25" SDR11
PER DETAIL (A/3) (J/3)
- ⑫ FP#4 1+78 TO
SB#24407 6+12
PLACE 442'
② 1.25" SDR11
PER DETAIL (C/3)
- ⑬ SB#24407 6+12 TO
RISER POLE 6+12
PLACE 45'
② 1.25" SDR11
PER DETAIL (A/3) (J/3) (K/3)
- ⑭ SB#24407 6+12 TO
FP#6 8+87
PLACE 285'
② 1.25" SDR11
PER DETAIL (C/3)
- ⑮ FP#6 8+87 TO
SB#24307 10+23
PLACE 131'
③ 1.25" SDR11
PER DETAIL (C/3)
- ⑯ SB#24307 10+23 TO
RISER POLE 10+23
PLACE 45'
② 1.25" SDR11
PER DETAIL (A/3) (J/3) (K/3)
- ⑰ SB#24307 10+23 TO
FP#7
PLACE 130'
② 1.25" SDR11
PER DETAIL (C/3)



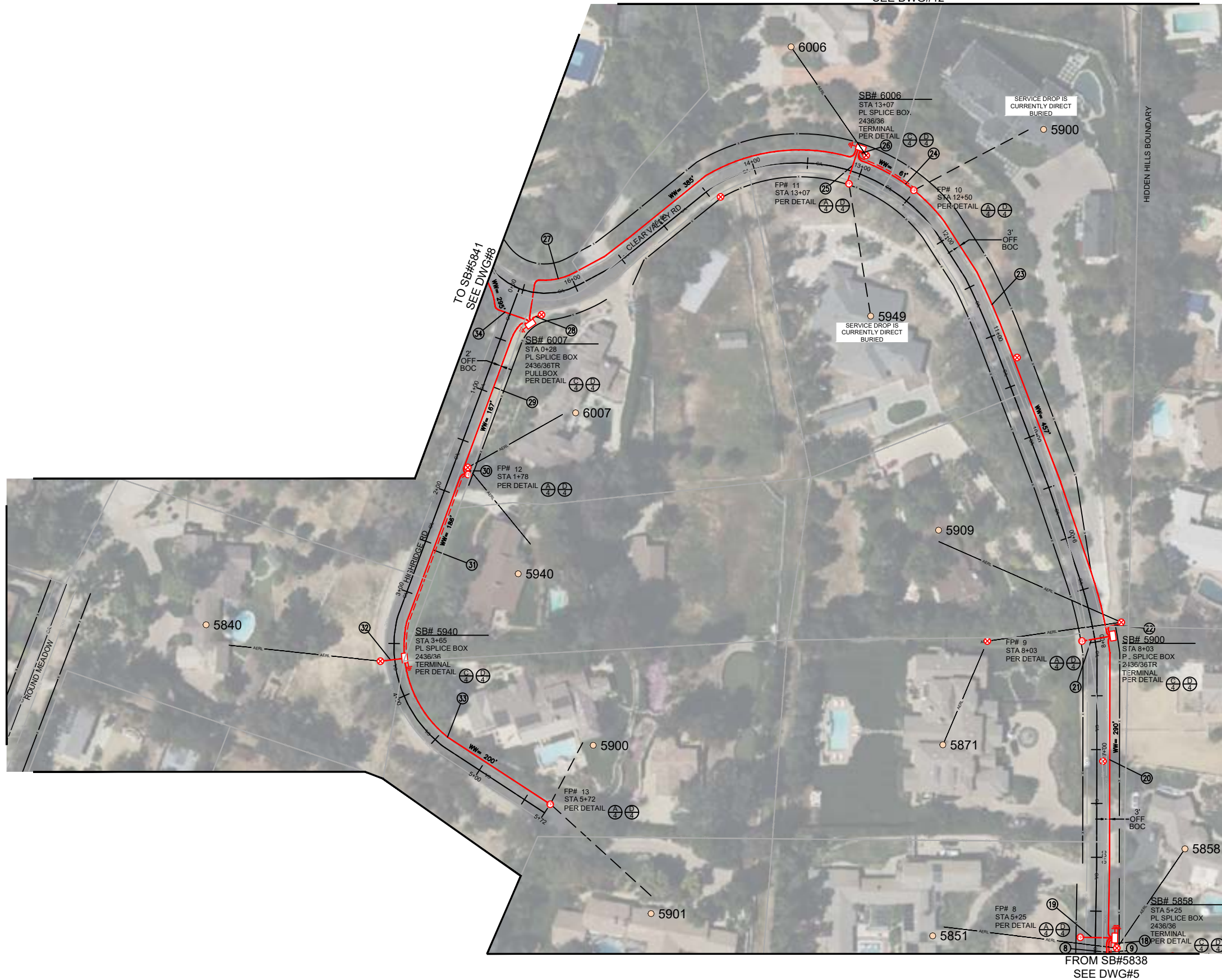
JOB NO. HIDDEN HILLS - PHASE 3
 LOCATION HIDDEN HILLS, CA
 ENGR JOY PADILLA TEL 909-457-8448

SUBJECT
TRENCH ALIGNMENT
 TYPE OF CONST
DUCT PLACEMENT
 DWG 6 OF 19

VERSION
09/07/2023

SHEET INDEX	
DWG 1 - COVER PAGE	
DWG 2 - BILL OF MATERIALS	
DWG 3 - TYPICAL CONST. DETAILS	
DWG 4 - TYPICAL BOX DETAILS	
DWG 5 TO 19 - CONDUIT DESIGN	

SEE DWG#12



PLACEMENT NOTES:

- | | |
|--|--|
| 8 SB#5838 3+16 TO
SB#5858 5+25
PL'D ON DWG#5
(2) 1.25" SDR11
PER DETAIL (A/3) | 26 SB#6006 13+07 TO
RISER POLE
PLACE 10'
(2) 1.25" SDR11
PER DETAIL (A/3) (K/3) |
| 9 SB#5858 5+25 TO
BORE PIT
PL'D ON DWG#5
(3) 1.25" SDR11
PER DETAIL (A/3) | 27 SB#6006 13+07 TO
SB#6007 0+28
PLACE 385'
(2) 1.25" SDR11
PER DETAIL (A/3) (J/3) |
| 18 SB#5858 5+25 TO
RISER POLE
PLACE 10'
(2) 1.25" SDR11
PER DETAIL (A/3) (K/3) | 28 SB#6007 0+28 TO
RISER POLE
PLACE 10'
(2) 1.25" SDR11
PER DETAIL (A/3) (K/3) |
| 19 SB#5858 5+25 TO
FP#8 5+25
PLACE 10'
(2) 1.25" SDR11
PER DETAIL (A/3) (J/3) | 29 SB#6007 0+28 TO
FP#12 1+78
PLACE 167'
(2) 1.25" SDR11
PER DETAIL (A/3) |
| 20 SB#5858 5+25 TO
SB#5900 8+03
PLACE 290'
(2) 1.25" SDR11
PER DETAIL (A/3) | 30 FP#12 1+78 TO
RISER POLE
PLACE 10'
(2) 1.25" SDR11
PER DETAIL (A/3) (J/3) (K/3) |
| 21 SB#5900 8+03 TO
FP#9 8+03
PLACE 45'
(2) 1.25" SDR11
PER DETAIL (A/3) (J/3) | 31 FP#12 1+78 TO
SB#5940 3+67
PLACE 186'
(4) 1.25" SDR11
PER DETAIL (A/3) |
| 22 SB#5900 8+03 TO
RISER POLE
PLACE 20'
(2) 1.25" SDR11
PER DETAIL (A/3) (K/3) | 32 SB#5940 3+67 TO
RISER POLE
PLACE 30'
(2) 1.25" SDR11
PER DETAIL (A/3) (K/3) |
| 23 SB#5900 8+03 TO
FP#10 12+50
PLACE 457'
(2) 1.25" SDR11
PER DETAIL (A/3) | 33 SB#5940 3+67 TO
FP#13 5+72
PLACE 200'
(2) 1.25" SDR11
PER DETAIL (A/3) |
| 24 FP#10 12+50 TO
SB#6006 13+07
PLACE 61'
(3) 1.25" SDR11
PER DETAIL (A/3) | 34 SB#6007 0+28 TO
SB#5841 19+21
PLACE 295'
(2) 1.25" SDR11
PER DETAIL (A/3) |
| 25 SB#6006 13+07 TO
FP#11 13+07
PLACE 45'
(2) 1.25" SDR11
PER DETAIL (A/3) (J/3) | |

SEE DWG#9



JOB NO. HIDDEN HILLS - PHASE 3
 LOCATION HIDDEN HILLS, CA
 ENGR JOY PADILLA TEL 909-457-8448

SUBJECT
7
 TYPE OF CONST
DUCT PLACEMENT
 DWG 7 OF 19

VERSION
09/07/2023

SHEET INDEX

DWG 1 - COVER PAGE
DWG 2 - BILL OF MATERIALS
DWG 3 - TYPICAL CONST. DETAILS
DWG 4 - TYPICAL BOX DETAILS
DWG 5 TO 19 - CONDUIT DESIGN

PLACEMENT NOTES:

- ③④ SB#6007 0+28 TO
SB#5841 19+21
PL'D ON DWG#7
Ø 1.25" SDR11
PER DETAIL (A/3)
- ③⑤ SB#5841 19+21 TO
RISER POLE
PLACE 10'
Ø 1.25" SDR11
PER DETAIL (A/3) (K/3)
- ③⑥ SB#5841 19+21 TO
FP#14 20+94
PLACE 173'
Ø 1.25" SDR11
PER DETAIL (A/3)



844-994-4448

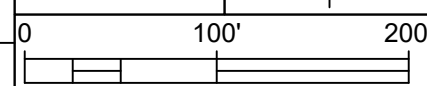
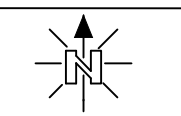
JOB NO. HIDDEN HILLS - PHASE 3
 LOCATION HIDDEN HILLS, CA
 ENGR JOY PADILLA TEL 909-457-8448

SUBJECT
TRENCH ALIGNMENT

TYPE OF CONST
DUCT PLACEMENT

DWG 8 OF 19

VERSION
09/07/2023



SHEET INDEX	
DWG 1 - COVER PAGE	
DWG 2 - BILL OF MATERIALS	
DWG 3 - TYPICAL CONST. DETAILS	
DWG 4 - TYPICAL BOX DETAILS	
DWG 5 TO 19 - CONDUIT DESIGN	



PLACEMENT NOTES:


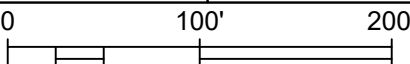
- ④ FP#2 75+70 TO
TIC MARK 77+68
PL'D ON DWG#5
(3) 1.25" SDR11
PER DETAIL (A/3) (J/3)
- ③⑦ TIC MARK 77+68 TO
SB#5811 77+83
PLACE 24'
(6) 1.25" SDR11
PER DETAIL (A/3)
- ③⑧ SB#5811 77+83 TO
END PH 3
PLACE 60'
(3) 1.25" SDR11
PER DETAIL (A/3) (J/3)
- ③⑨ SB#5811 77+83 TO
SB#24705 79+31
PLACE 155'
(3) 1.25" SDR11
PER DETAIL (A/3)
- ④⑩ SB#24705 79+31 TO
SB#24719 82+50
PLACE 321'
(3) 1.25" SDR11
PER DETAIL (A/3)
- ④① SB#24719 82+50 TO
SB#24807 86+07
PLACE 370'
(3) 1.25" SDR11
PER DETAIL (A/3) (J/3)
- ④② SB#24807 86+07 TO
SB#24835 88+05
PLACE 215'
(2) 1.25" SDR11
PER DETAIL (A/3)
- ④⑤ SB#24807 86+07 TO
SB#5949 4+40
PLACE 435'
(3) 1.25" SDR11
PER DETAIL (A/3)
- ④⑥ SB#5949 4+40 TO
FP#15 4+40
PLACE 50'
(2) 1.25" SDR11
PER DETAIL (A/3) (J/3)
- ④⑦ SB#5949 4+40 TO
SB#6051 12+78
PLACE 861'
(3) 1.25" SDR11
PER DETAIL (A/3)
- ①①④ SB#24854 47+00 TO
FP#47 49+73
PLACE 280'
(2) 1.25" SDR11
PER DETAIL (A/3)
- ①①⑤ FP#47 49+73 TO
RISER POLE
PLACE 10'
(2) 1.25" SDR11
PER DETAIL (A/3) (K/3)
- ①①⑥ SB#5949 4+40 TO
FP#47 49+73
PLACE 118'
(4) 1.25" SDR11
PER DETAIL (A/3) (J/3)



844-994-4448

JOB NO. HIDDEN HILLS - PHASE 3
 LOCATION HIDDEN HILLS, CA
 ENGR JOY PADILLA TEL 909-457-8448

SUBJECT
TRENCH ALIGNMENT
 TYPE OF CONST
DUCT PLACEMENT
 DWG 9 OF 19

VERSION
09/07/2023



SHEET INDEX
 DWG 1 - COVER PAGE
 DWG 2 - BILL OF MATERIALS
 DWG 3 - TYPICAL CONST. DETAILS
 DWG 4 - TYPICAL BOX DETAILS
 DWG 5 TO 19 - CONDUIT DESIGN

PLACEMENT NOTES:

- ④2 SB#24807 86+07 TO
SB#24835 88+05
PL'D ON DWG#9
Ø 1.25" SDR11
PER DETAIL (A/3)
- ④3 SB#24835 88+05 to
SB#24865 90+53
PLACE 251'
Ø 1.25" SDR11
PER DETAIL (A/3)
- ④4 SB#24865 90+53 TO
SB#24895 95+50
PLACE 510'
Ø 1.25" SDR11
PER DETAIL (A/3)



844-994-4448

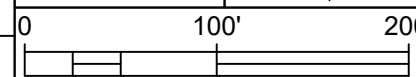
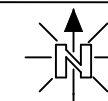
JOB NO. HIDDEN HILLS - PHASE 3
 LOCATION HIDDEN HILLS, CA
 ENGR JOY PADILLA TEL 909-457-8448

SUBJECT
TRENCH ALIGNMENT

TYPE OF CONST
DUCT PLACEMENT

DWG 10 OF 19

VERSION
09/07/2023



SHEET INDEX

- DWG 1 - COVER PAGE
- DWG 2 - BILL OF MATERIALS
- DWG 3 - TYPICAL CONST. DETAILS
- DWG 4 - TYPICAL BOX DETAILS
- DWG 5 TO 19 - CONDUIT DESIGN

PLACEMENT NOTES:

- ④7 SB#5949 4+40 TO
SB#6051 12+78
PL'D ON DWG#9
③ 1.25" SDR11
PER DETAIL (A/3)
- ④8 SB#6051 12+78 TO
FP#16 12+78
PLACE 45'
② 1.25" SDR11
PER DETAIL (A/3) (J/3)
- ④9 SB#6051 12+78 TO
FP#17 19+96
PLACE 715'
③ 1.25" SDR11
PER DETAIL (A/3)



TO FP#19
SEE DWG#12

FROM SB#5949
SEE DWG#9



844-994-4448

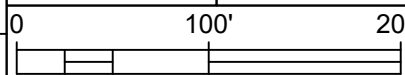
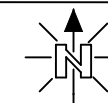
JOB NO. HIDDEN HILLS - PHASE 3
 LOCATION HIDDEN HILLS, CA
 ENGR JOY PADILLA TEL 909-457-8448

SUBJECT
TRENCH ALIGNMENT

TYPE OF CONST
DUCT PLACEMENT

DWG 11 OF 19

VERSION
09/07/2023

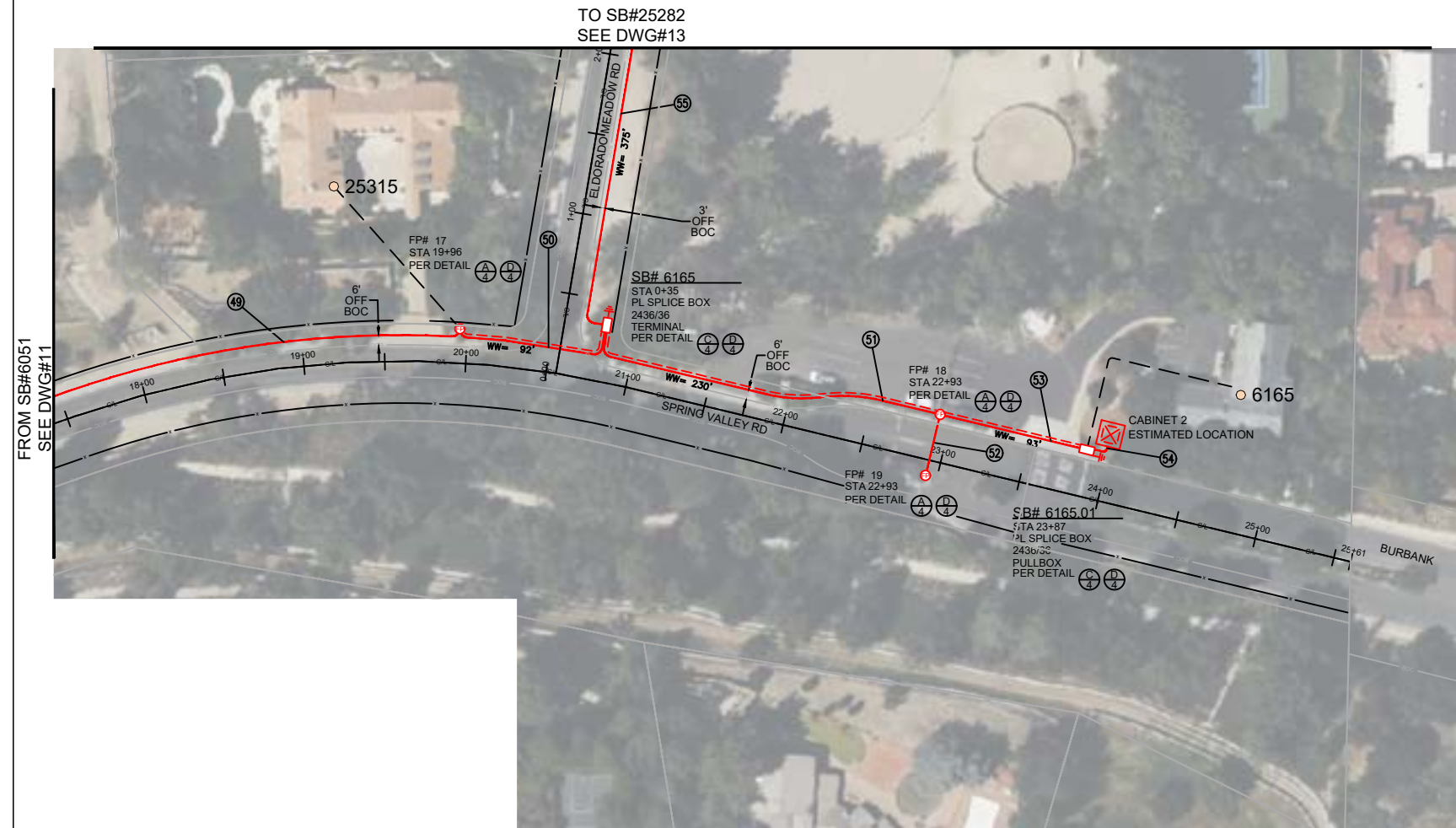


SHEET INDEX

- DWG 1 - COVER PAGE
- DWG 2 - BILL OF MATERIALS
- DWG 3 - TYPICAL CONST. DETAILS
- DWG 4 - TYPICAL BOX DETAILS
- DWG 5 TO 19 - CONDUIT DESIGN

PLACEMENT NOTES:

- ④9 SB#6051 12+78 TO
FP#17 19+96
PL'D ON DWG#11
③ 1.25" SDR11
PER DETAIL (A/3)
- ⑤0 FP#17 19+96 TO
SB#6165 0+35
PLACE 92'
④ 1.25" SDR11
PER DETAIL (A/3)
- ⑤1 SB#6165 0+35 TO
FP#18 22+93
PLACE 230'
⑤ 1.25" SDR11
PER DETAIL (A/3)
- ⑤2 FP#18 22+93 TO
FP#19 22+93
PLACE 35'
① 1.25" SDR11
PER DETAIL (A/3) (J/3)
- ⑤3 FP#18 22+93 TO
SB#6165.01 23+87
PLACE 93'
④ 1.25" SDR11
PER DETAIL (A/3)
- ⑤4 SB#6165.01 23+87 TO
CABINET 2 23+87
PLACE 10'
③ 1.25" SDR11
PER DETAIL (A/3)
- ⑤5 SB#6165 0+35 TO
SB#25282 3+84
PLACE 375'
② 1.25" SDR11
PER DETAIL (A/3)



FROM SB#6051
SEE DWG#11

TO SB#25282
SEE DWG#13



JOB NO. HIDDEN HILLS - PHASE 3
 LOCATION HIDDEN HILLS, CA
 ENGR JOY PADILLA TEL 909-457-8448

SUBJECT
TRENCH ALIGNMENT

TYPE OF CONST
DUCT PLACEMENT

DWG 12 OF 19

VERSION
09/07/2023

SHEET INDEX	
DWG 1 - COVER PAGE	
DWG 2 - BILL OF MATERIALS	
DWG 3 - TYPICAL CONST. DETAILS	
DWG 4 - TYPICAL BOX DETAILS	
DWG 5 TO 19 - CONDUIT DESIGN	

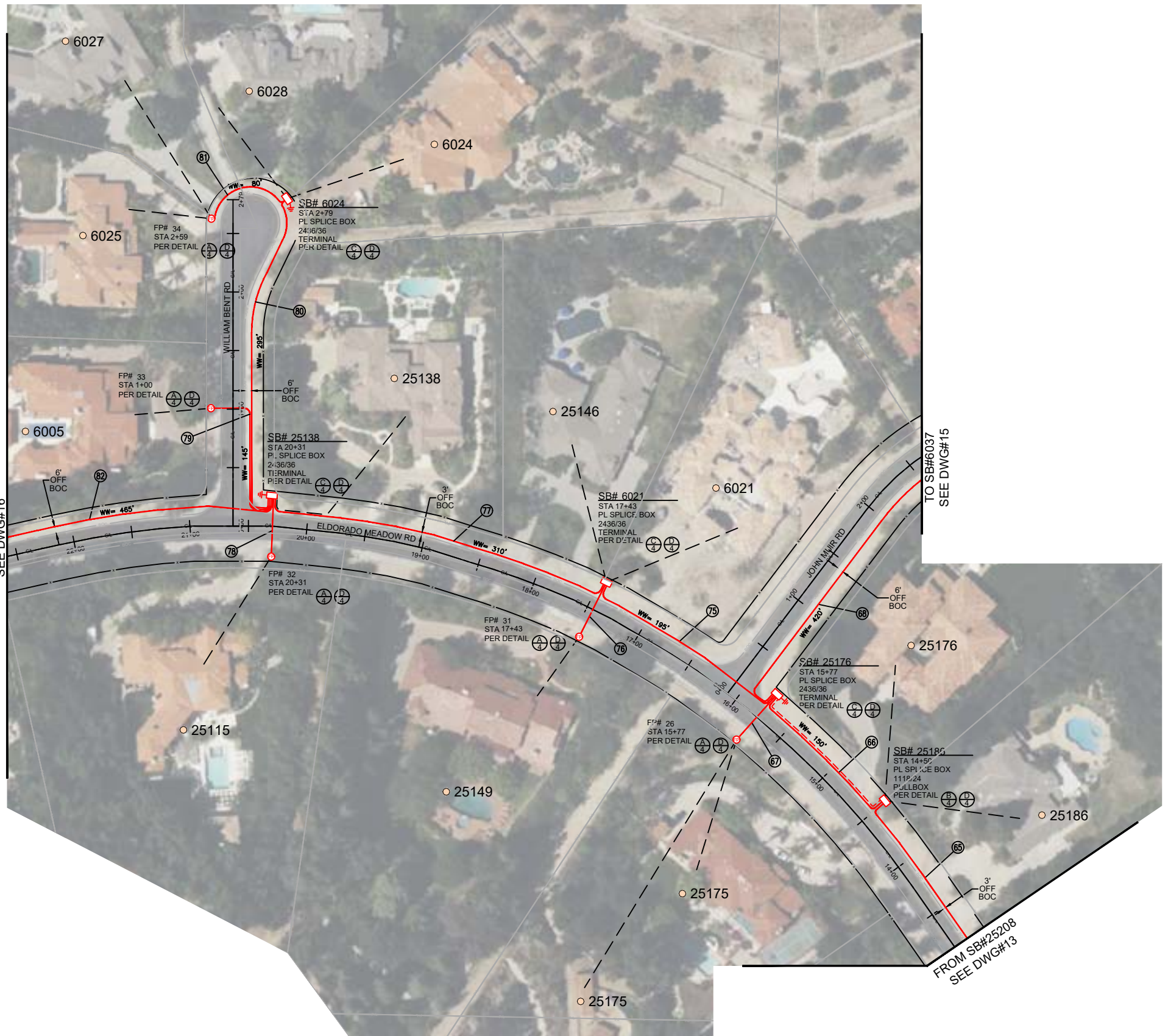


PLACEMENT NOTES:

- 55 SB#6165 0+35 TO
SB#25282 3+84
PL'D ON DWG#12
Ø 1.25" SDR11
PER DETAIL (A/3)
- 56 SB#25282 3+84 TO
FP#20 3+84
PLACE 55'
Ø 1.25" SDR11
PER DETAIL (A/3) (J/3)
- 57 SB#25282 3+84 TO
SB#25264 5+00
PLACE 140'
Ø 1.25" SDR11
PER DETAIL (A/3)
- 58 SB#25264 5+00 TO
FP#21 5+00
PLACE 55'
Ø 1.25" SDR11
PER DETAIL (A/3) (J/3)
- 59 SB#25264 5+00 TO
SB#25254 7+43
PLACE 270'
Ø 1.25" SDR11
PER DETAIL (A/3)
- 60 SB#25254 7+43 TO
FP#22 7+73
PLACE 55'
Ø 1.25" SDR11
PER DETAIL (A/3) (J/3)
- 61 SB#25254 7+43 TO
FP#23 10+03
PLACE 275'
Ø 1.25" SDR11
PER DETAIL (A/3)
- 62 FP#23 10+03 TO
FP#24 10+03
PLACE 55'
Ø 1.25" SDR11
PER DETAIL (A/3) (J/3)
- 63 FP#23 10+03 TO
SB#25208 11+72
PLACE 185'
Ø 1.25" SDR11
PER DETAIL (A/3)
- 64 SB#25208 11+72 TO
FP#25 11+72
PLACE 55'
Ø 1.25" SDR11
PER DETAIL (A/3) (J/3)
- 65 SB#25208 11+72 TO
SB#25186 14+50
PLACE 300'
Ø 1.25" SDR11
PER DETAIL (A/3)

FROM SB#6165
SEE DWG#12

	JOB NO. <u>HIDDEN HILLS - PHASE 3</u>	SUBJECT TRENCH ALIGNMENT	VERSION 09/07/2023		SHEET INDEX DWG 1 - COVER PAGE DWG 2 - BILL OF MATERIALS DWG 3 - TYPICAL CONST. DETAILS DWG 4 - TYPICAL BOX DETAILS DWG 5 TO 19 - CONDUIT DESIGN
	LOCATION <u>HIDDEN HILLS, CA</u>	TYPE OF CONST DUCT PLACEMENT			
ENGR <u>JOY PADILLA</u>	TEL <u>909-457-8448</u>	DWG <u>13</u> OF <u>19</u>			
844-994-4448					



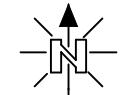
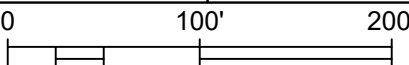
PLACEMENT NOTES:

- | | |
|---|--|
| <p>(65) SB#25208 11+72 TO
SB#25186 14+50
PL'D ON DWG#13
(2) 1.25" SDR11
PER DETAIL (A/3)</p> <p>(66) SB#25186 14+50 TO
SB#25176 15+77
PLACE 150'
(4) 1.25" SDR11
PER DETAIL (A/3)</p> <p>(67) SB#25176 15+77 TO
FP#26 15+77
PLACE 55'
(2) 1.25" SDR11
PER DETAIL (A/3) (J/3)</p> <p>(68) SB#25176 15+77 TO
SB#6037 4+20
PLACE 420'
(2) 1.25" SDR11
PER DETAIL (A/3)</p> <p>(75) SB#25176 15+77 TO
SB#6021 17+43
PLACE 195'
(2) 1.25" SDR11
PER DETAIL (A/3)</p> <p>(76) SB#6021 17+43 TO
FP#31 17+43
PLACE 55'
(2) 1.25" SDR11
PER DETAIL (A/3) (J/3)</p> | <p>(77) SB#6021 17+43 TO
SB#25138 20+31
PLACE 310'
(2) 1.25" SDR11
PER DETAIL (A/3)</p> <p>(78) SB#25138 20+31 TO
FP#32 20+31
PLACE 55'
(2) 1.25" SDR11
PER DETAIL (A/3) (J/3)</p> <p>(79) SB#25138 20+31 TO
FP#33 1+00
PLACE 145'
(2) 1.25" SDR11
PER DETAIL (A/3) (J/3)</p> <p>(80) SB#25138 20+31 TO
SB#6024 2+79
PLACE 295'
(2) 1.25" SDR11
PER DETAIL (A/3)</p> <p>(81) SB#6024 2+79 TO
FP#34 2+59
PLACE 80'
(2) 1.25" SDR11
PER DETAIL (A/3)</p> <p>(82) SB#25138 20+31 TO
SB#5843 24+82
PLACE 465'
(2) 1.25" SDR11
PER DETAIL (A/3)</p> |
|---|--|



JOB NO. HIDDEN HILLS - PHASE 3
 LOCATION HIDDEN HILLS, CA
 ENGR JOY PADILLA TEL 909-457-8448

SUBJECT TRENCH ALIGNMENT
 TYPE OF CONST DUCT PLACEMENT
 DWG 14 OF 19

VERSION 09/07/2023



SHEET INDEX	
DWG 1 - COVER PAGE	
DWG 2 - BILL OF MATERIALS	
DWG 3 - TYPICAL CONST. DETAILS	
DWG 4 - TYPICAL BOX DETAILS	
DWG 5 TO 19 - CONDUIT DESIGN	



FROM SB#25176
SEE DWG#14

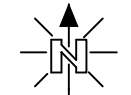
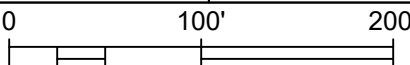
PLACEMENT NOTES:

- (X) [LOCATION1] STA
[LOCATION2] STA
PL'D ON DWG#5
Ø 1.25" SDR11
PER DETAIL (A/3)
- (69) SB#6037 4+20 TO
FP#27 4+20
PLACE 55'
Ø 1.25" SDR11
PER DETAIL (A/3) (J/3)
- (70) SB#6037 4+20 TO
SB#6050 6+46
PLACE 245'
Ø 1.25" SDR11
PER DETAIL (A/3)
- (71) SB#6050 6+46 TO
FP#28 6+46
PLACE 55'
Ø 1.25" SDR11
PER DETAIL (A/3) (J/3)
- (72) SB#6050 6+46 TO
SB#6072 7+83
PLACE 155'
Ø 1.25" SDR11
PER DETAIL (A/3)
- (73) SB#6072 7+83 TO
FP#29 7+83
PLACE 55'
Ø 1.25" SDR11
PER DETAIL (A/3) (J/3)
- (74) SB#6072 7+83 TO
FP#30 8+79
PLACE 130'
Ø 1.25" SDR11
PER DETAIL (A/3)



JOB NO. HIDDEN HILLS - PHASE 3
 LOCATION HIDDEN HILLS, CA
 ENGR JOY PADILLA TEL 909-457-8448

SUBJECT TRENCH ALIGNMENT
 TYPE OF CONST DUCT PLACEMENT
 DWG 15 OF 19

VERSION 09/07/2023



SHEET INDEX	
DWG 1 - COVER PAGE	
DWG 2 - BILL OF MATERIALS	
DWG 3 - TYPICAL CONST. DETAILS	
DWG 4 - TYPICAL BOX DETAILS	
DWG 5 TO 19 - CONDUIT DESIGN	

PLACEMENT NOTES:

- 82 SB#25138 20+31 TO
SB#5843 23+32
PL'D ON DWG#14
Ø 1.25" SDR11
PER DETAIL (A/3)
- 83 SB#5843 24+82 TO
FP#35 24+82
PLACE 55'
Ø 1.25" SDR11
PER DETAIL (A/3) (J/3)
- 84 SB#5843 24+82 TO
SB#25012 29+69
PLACE 503'
Ø 1.25" SDR11
PER DETAIL (A/3)
- 85 SB#25012 29+69 TO
SB#5890 2+42
PLACE 270'
Ø 1.25" SDR11
PER DETAIL (A/3)
- 86 SB#5890 2+42 TO
FP#36 2+42
PLACE 55'
Ø 1.25" SDR11
PER DETAIL (A/3) (J/3)
- 87 SB#5890 2+42 TO
SB#5840 6+12
PLACE 392'
Ø 1.25" SDR11
PER DETAIL (A/3)
- 88 SB#5840 6+12 TO
FP#37 6+41
PLACE 90'
Ø 1.25" SDR11
PER DETAIL (A/3)



TO SB#5890
SEE DWG#17

FROM SB#25138
SEE DWG#14



844-994-4448

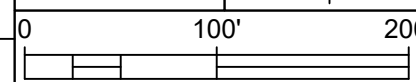
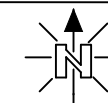
JOB NO. HIDDEN HILLS - PHASE 3
 LOCATION HIDDEN HILLS, CA
 ENGR JOY PADILLA TEL 909-457-8448

SUBJECT
TRENCH ALIGNMENT

TYPE OF CONST
DUCT PLACEMENT

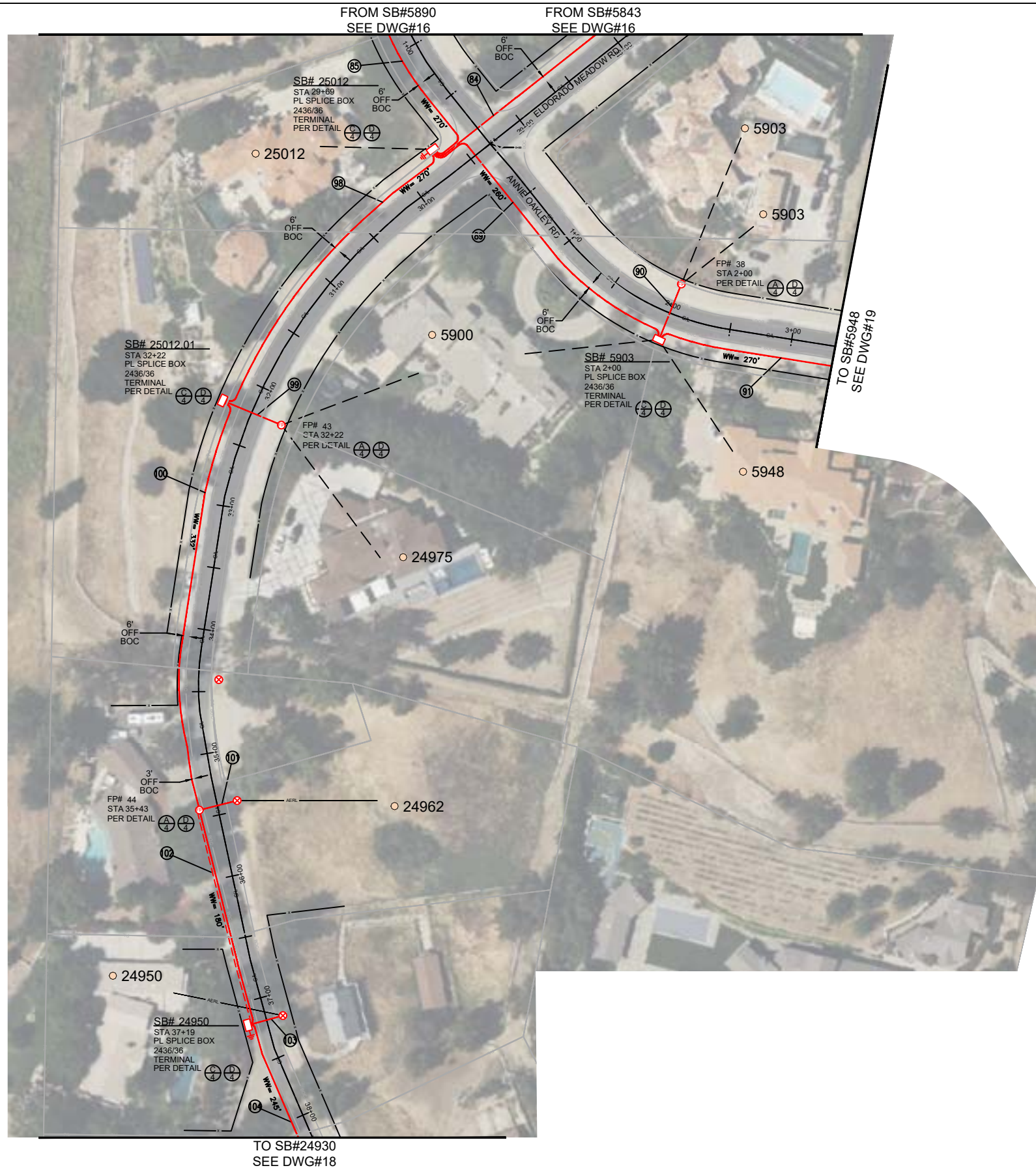
DWG 16 OF 19

VERSION
09/07/2023



SHEET INDEX

- DWG 1 - COVER PAGE
- DWG 2 - BILL OF MATERIALS
- DWG 3 - TYPICAL CONST. DETAILS
- DWG 4 - TYPICAL BOX DETAILS
- DWG 5 TO 19 - CONDUIT DESIGN




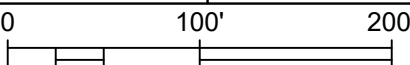
PLACEMENT NOTES:

- (84) SB#5843 24+82 TO SB#25012 29+69
PL'D ON DWG#16
(2) 1.25" SDR11
PER DETAIL (A/3) (J/3)
- (85) SB#25012 29+69 TO SB#5890 2+42
PL'D ON DWG#16
(2) 1.25" SDR11
PER DETAIL (A/3)
- (89) SB#25012 29+69 TO SB#5903 2+00
PLACE 260'
(2) 1.25" SDR11
PER DETAIL (A/3) (J/3)
- (90) SB#5903 2+00 TO FP#38 2+00
PLACE 55'
(2) 1.25" SDR11
PER DETAIL (J/3)
- (91) SB#5903 2+00 TO SB#5948 4+65
PLACE 270'
(2) 1.25" SDR11
PER DETAIL (A/3)
- (98) SB#25012 29+69 TO SB#25012.01 32+22
PLACE 270'
(2) 1.25" SDR11
PER DETAIL (A/3)
- (99) SB#25012.01 32+22 TO FP#43 32+22
PLACE 55'
(2) 1.25" SDR11
PER DETAIL (J/3)
- (100) SB#25012.01 32+22 TO FP#44 35+43
PLACE 332'
(2) 1.25" SDR11
PER DETAIL (A/3)
- (101) FP#44 35+43 TO RISER POLE
PLACE 55'
(2) 1.25" SDR11
PER DETAIL (J/3) (K/3)
- (102) FP#44 35+43 TO SB#24950 37+19
PLACE 180'
(3) 1.25" SDR11
PER DETAIL (A/3)
- (103) SB#24950 37+19 TO RISER POLE
PLACE 55'
(2) 1.25" SDR11
PER DETAIL (J/3) (K/3)
- (104) SB#24950 37+19 TO SB#24930 39+57
PLACE 245'
(2) 1.25" SDR11
PER DETAIL (A/3)

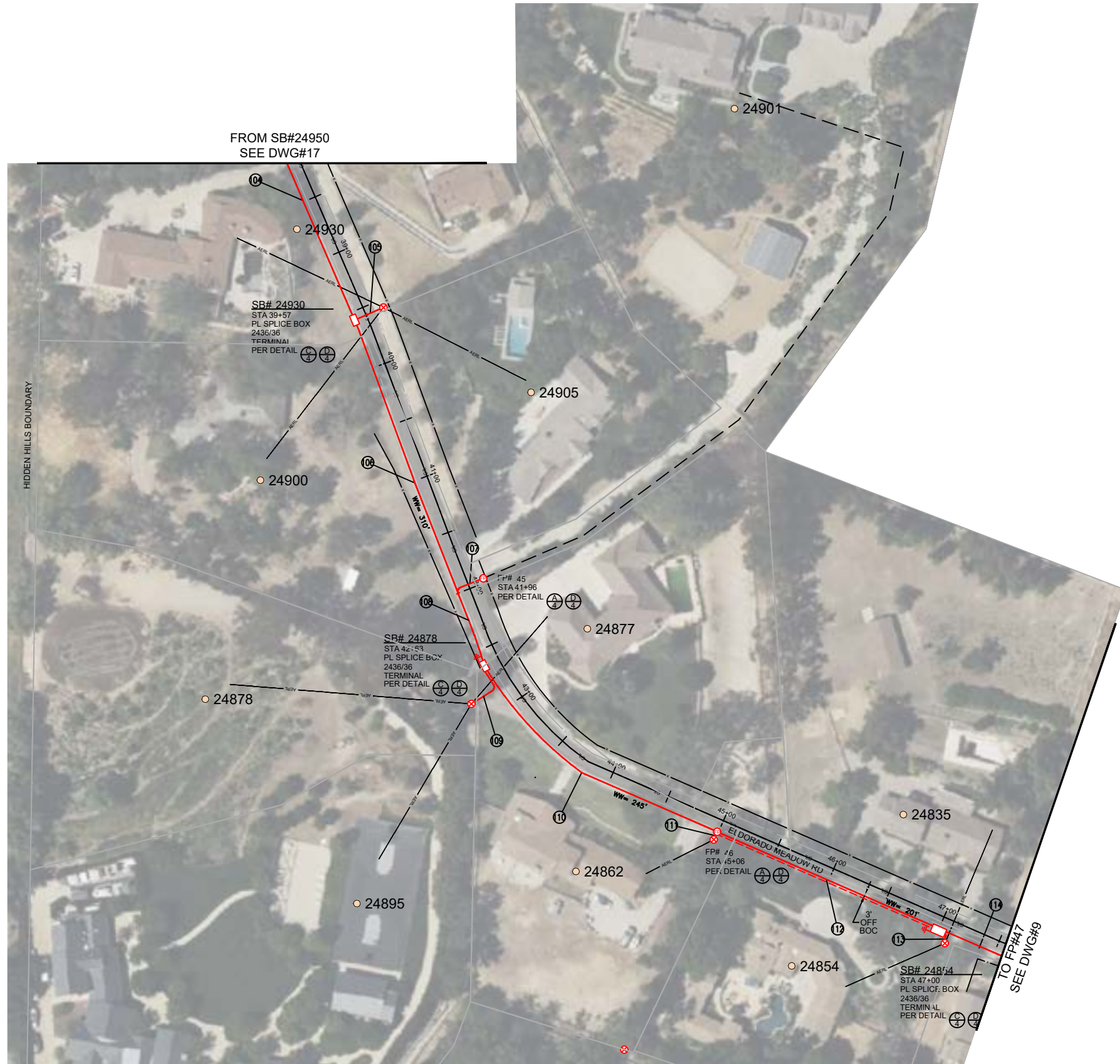


JOB NO. HIDDEN HILLS - PHASE 3
 LOCATION HIDDEN HILLS, CA
 ENGR JOY PADILLA TEL 909-457-8448

SUBJECT TRENCH ALIGNMENT
 TYPE OF CONST DUCT PLACEMENT
 DWG 17 OF 19

VERSION 09/07/2023



SHEET INDEX
 DWG 1 - COVER PAGE
 DWG 2 - BILL OF MATERIALS
 DWG 3 - TYPICAL CONST. DETAILS
 DWG 4 - TYPICAL BOX DETAILS
 DWG 5 TO 19 - CONDUIT DESIGN



PLACEMENT NOTES:

- 104 SB#24950 37+19 TO
SB#24930 39+57
PL'D ON DWG#17
② 1.25" SDR11
PER DETAIL (A/3)
- 105 SB#24930 39+57 TO
RISER POLE
PLACE 30'
② 1.25" SDR11
PER DETAIL (J/3) (K/3)
- 106 SB#24930 39+57 TO
TIC MARK 42+00
PLACE 245'
② 1.25" SDR11
PER DETAIL (A/3)
- 107 TIC MARK 42+00 TO
FP#45 41+96
PLACE 30'
② 1.25" SDR11
PER DETAIL (J/3)
- 108 TIC MARK 42+00 TO
SB#24878 42+63
PLACE 65'
② 1.25" SDR11
PER DETAIL (A/3)
- 109 SB#24878 42+63 TO
RISER POLE
PLACE 40'
② 1.25" SDR11
PER DETAIL (A/3) (K/3)
- 110 SB#24878 42+63 TO
FP#46 45+06
PLACE 245'
② 1.25" SDR11
PER DETAIL (A/3)
- 111 FP#46 45+06 TO
RISER POLE
PLACE 10'
② 1.25" SDR11
PER DETAIL (A/3) (K/3)
- 112 FP#46 45+06 TO
SB#24854 47+00
PLACE 201'
④ 1.25" SDR11
PER DETAIL (A/3)
- 113 SB#24854 47+00 TO
RISER POLE
PLACE 10'
② 1.25" SDR11
PER DETAIL (A/3) (K/3)
- 114 SB#24854 47+00 TO
FP#47 49+73
PL'D ON DWG#9
② 1.25" SDR11
PER DETAIL (A/3)



844-994-4448

JOB NO. HIDDEN HILLS - PHASE 3

LOCATION HIDDEN HILLS, CA

ENGR JOY PADILLA

TEL 909-457-8448

SUBJECT

TRENCH ALIGNMENT

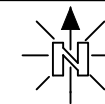
TYPE OF CONST

DUCT PLACEMENT

DWG 18 OF 19

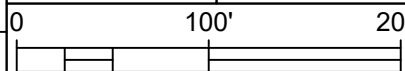
VERSION

09/07/2023



SHEET INDEX

- DWG 1 - COVER PAGE
- DWG 2 - BILL OF MATERIALS
- DWG 3 - TYPICAL CONST. DETAILS
- DWG 4 - TYPICAL BOX DETAILS
- DWG 5 TO 19 - CONDUIT DESIGN






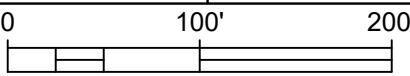
PLACEMENT NOTES:

- | | |
|--|---|
| <p>91 SB#5900 2+00 TO
SB#5948 4+65
PL'D ON DWG#17
(2) 1.25" SDR11
PER DETAIL (A/3)</p> | <p>95 SB#5955 6+92 TO
SB#6000 9+89
PLACE 305'
(2) 1.25" SDR11
PER DETAIL (A/3)</p> |
| <p>92 SB#5948 4+65 TO
FP#39 4+65
PLACE 50'
(2) 1.25" SDR11
PER DETAIL (A/3) (J/3)</p> | <p>96 SB#6000 9+89 TO
FP#41 9+89
PLACE 50'
(2) 1.25" SDR11
PER DETAIL (A/3) (J/3)</p> |
| <p>93 SB#5948 4+65 TO
SB#5955 6+92
PLACE 230'
(2) 1.25" SDR11
PER DETAIL (A/3)</p> | <p>97 SB#6000 9+89 TO
FP#42
PLACE 130'
(2) 1.25" SDR11
PER DETAIL (A/3)</p> |
| <p>94 SB#5955 6+92 TO
FP#40 6+92
PLACE 50'
(2) 1.25" SDR11
PER DETAIL (A/3) (J/3)</p> | |



JOB NO. HIDDEN HILLS - PHASE 3
 LOCATION HIDDEN HILLS, CA
 ENGR JOY PADILLA TEL 909-457-8448

SUBJECT TRENCH ALIGNMENT
 TYPE OF CONST DUCT PLACEMENT
 DWG 19 OF 19

VERSION 09/07/2023



SHEET INDEX
 DWG 1 - COVER PAGE
 DWG 2 - BILL OF MATERIALS
 DWG 3 - TYPICAL CONST. DETAILS
 DWG 4 - TYPICAL BOX DETAILS
 DWG 5 TO 19 - CONDUIT DESIGN