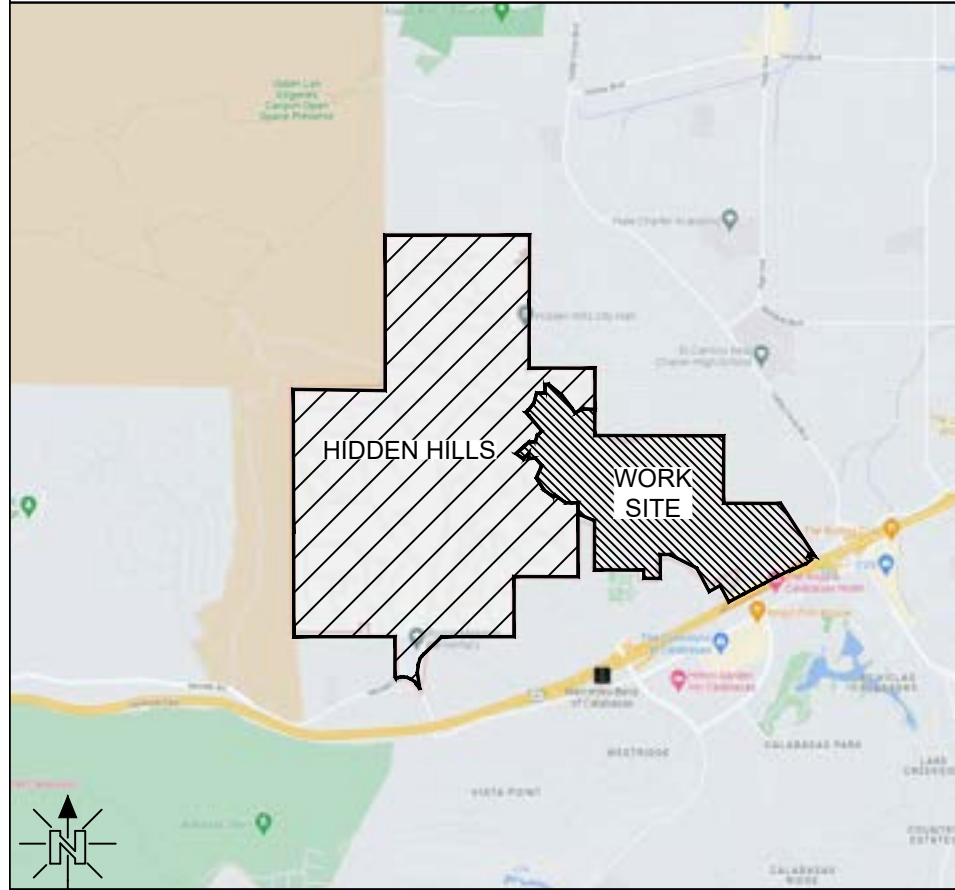


### JOB DESCRIPTION

THIS JOB WILL PLACE (59,981') 1.25" SDR11 CONDUIT, (69) 24X36X24 SPLICE BOXES, (20) 11X18X12 PULLBOXES, AND (37) 10X10X18 FLOWER POTS TO SERVE 174 SFU IN PHASE 2 OF HIDDEN HILLS.

### VICINITY MAP

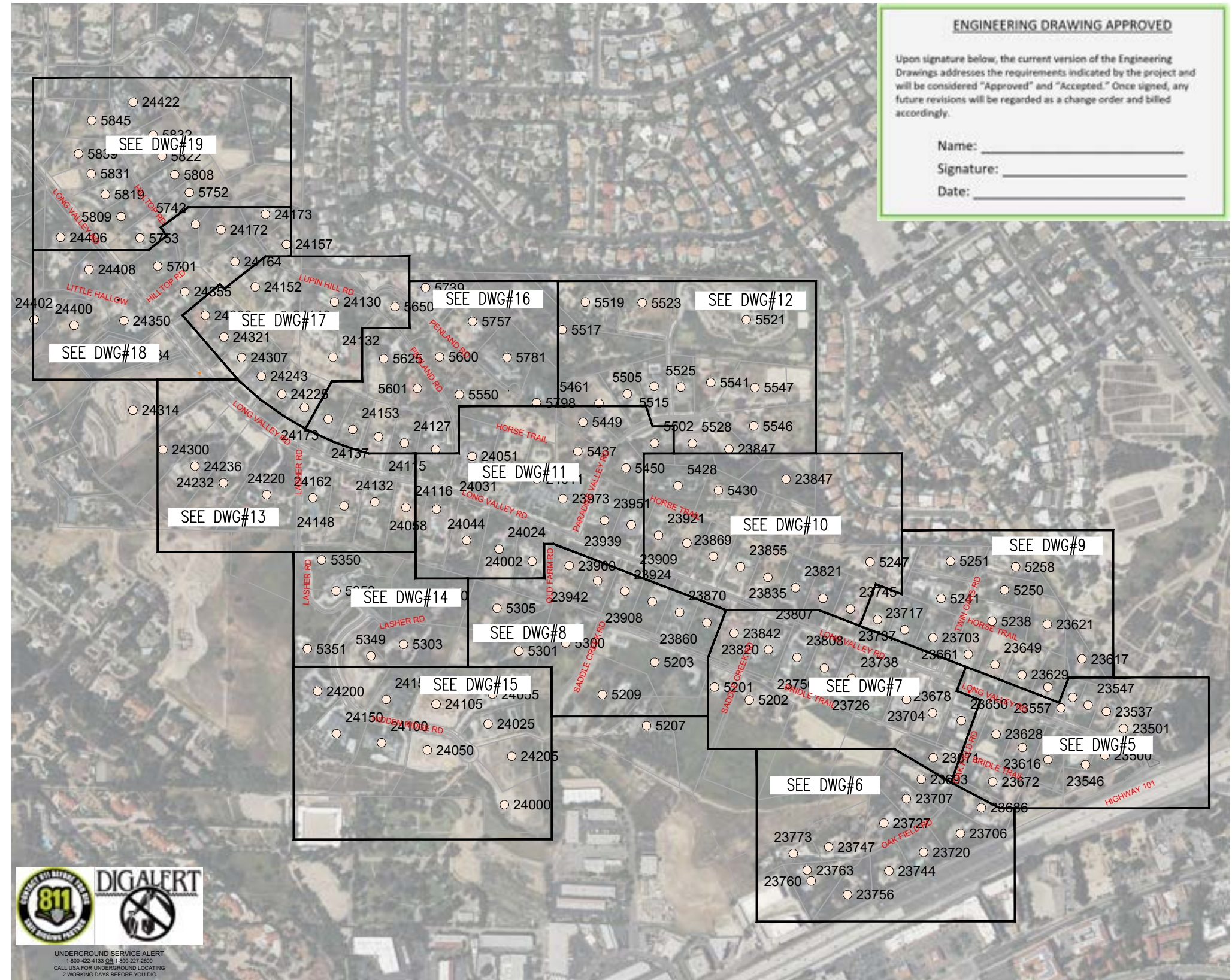
N.T.S.



### LEGEND

TELCO MANHOLE	BORE PIT	FIRE HYDRANT
TELCO VAULT	BRASS CAP	GAS VALVE
TELCO BOX	CATV PED	STREET LIGHT
FLOWER POT	CULVERT	SEWER MANHOLE
TELCO X-BOX	ELEC CABINET	STORM DRAIN
SOLELY OWNED POLE	ELEC MANHOLE	WATER MANHOLE
JOINT POLE	ELEC TRANSFORMER	WATER METER
ANCHOR	ELEC J-BOX	WATER VALVE
BORE DUCT - NEW DUCT - NEW + SERVICE DUCT - EXISTING DUCT - FUTURE SERVICE - AERIAL ELECTRICAL CABLE TV CENTERLINE BACK OF CURB	BORE GAS IRRIG P/L PUE ROW S SD T W	FENCE LINE IRRG P/L PUE ROW S SD T W

### HIDDEN HILLS PHASE 2 - 174 SFU



#### ENGINEERING DRAWING APPROVED

Upon signature below, the current version of the Engineering Drawings addresses the requirements indicated by the project and will be considered "Approved" and "Accepted." Once signed, any future revisions will be regarded as a change order and billed accordingly.

Name: \_\_\_\_\_

Signature: \_\_\_\_\_

Date: \_\_\_\_\_



UNDERGROUND SERVICE ALERT  
1-800-422-4133 OR 1-800-227-2900  
CALL USA FOR UNDERGROUND LOCATING  
2 WORKING DAYS BEFORE YOU DIG



844-994-4448

JOB NO. HIDDEN HILLS - PHASE 2  
 LOCATION HIDDEN HILLS, CA  
 ENGR JOY PADILLA TEL 909-457-8448

SUBJECT  
**COVER SHEET**  
 TYPE OF CONST  
**DUCT PLACEMENT**  
 DWG 1 OF 19

VERSION  
09/07/2023  
 CONFIDENTIAL AND PROPRIETARY INFORMATION  
 THE INFORMATION CONTAINED HEREIN, IS NOT FOR USE OR  
 DISCLOSURE OUTSIDE INYO NETWORKS, INC. OR THEIR  
 AFFILIATED COMPANIES EXCEPT UNDER WRITTEN AGREEMENT

SHEET INDEX	
DWG 1 - COVER PAGE	
DWG 2 - BILL OF MATERIALS	
DWG 3 - TYPICAL CONST. DETAILS	
DWG 4 - TYPICAL BOX DETAILS	
DWG 5 TO 19 - CONDUIT DESIGN	

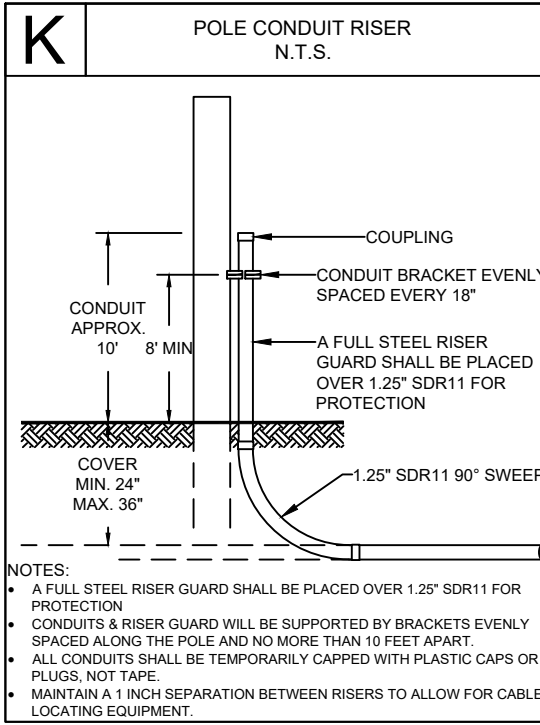
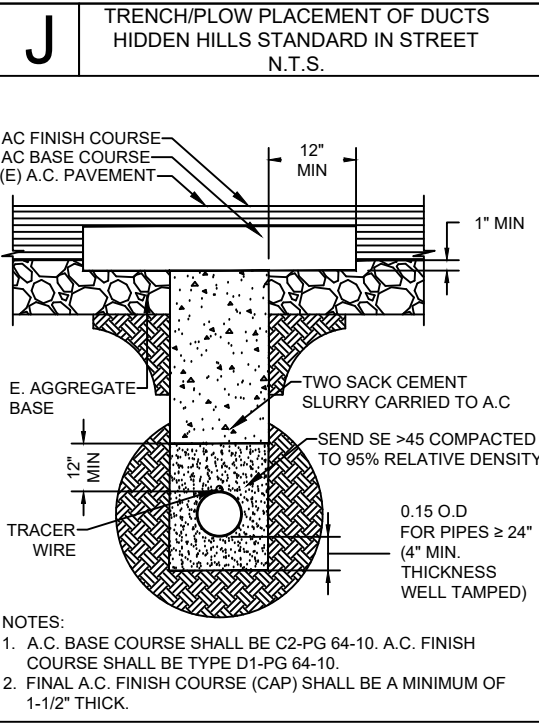
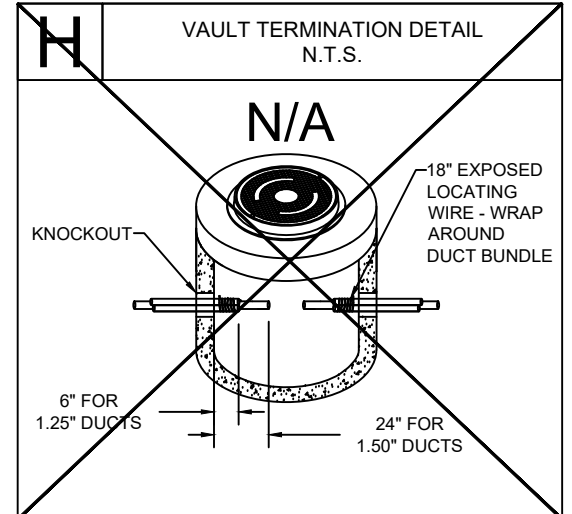
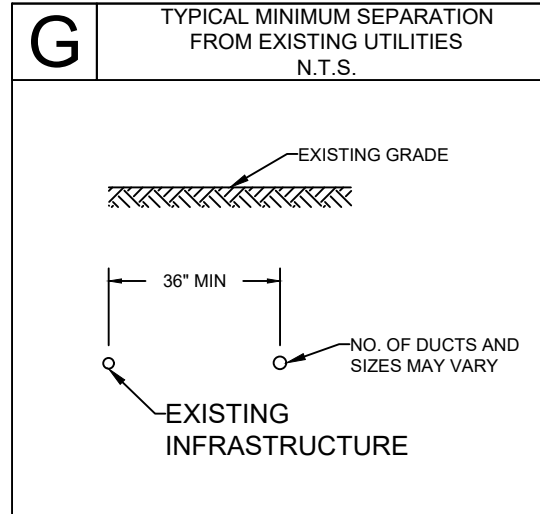
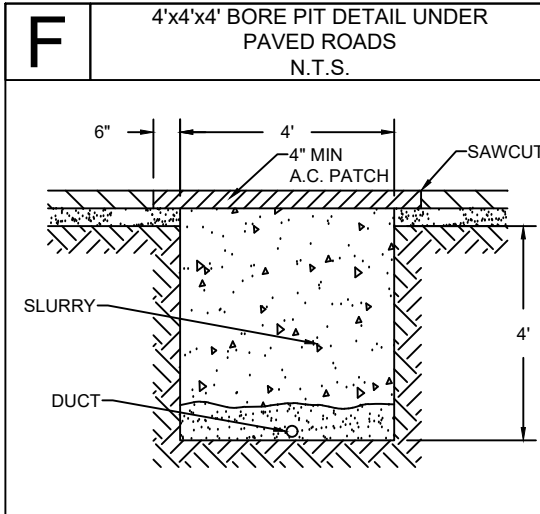
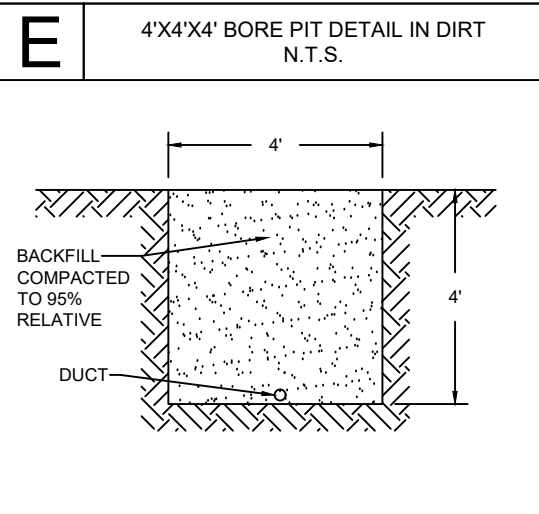
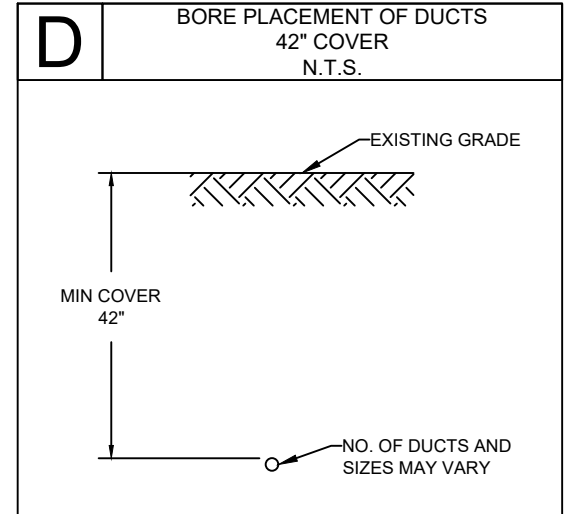
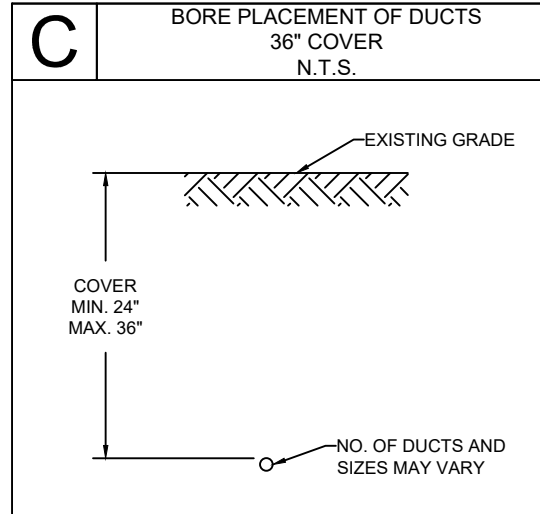
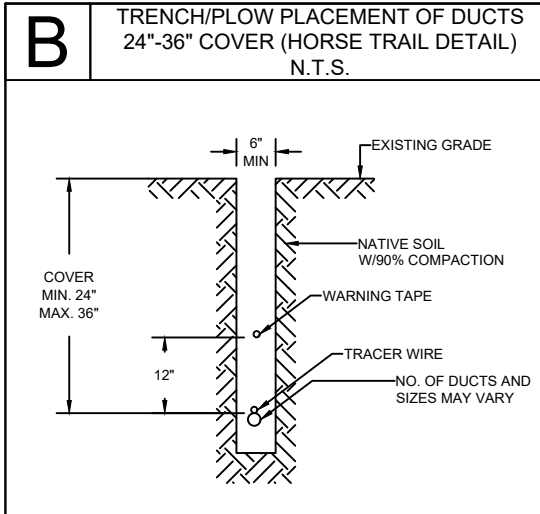
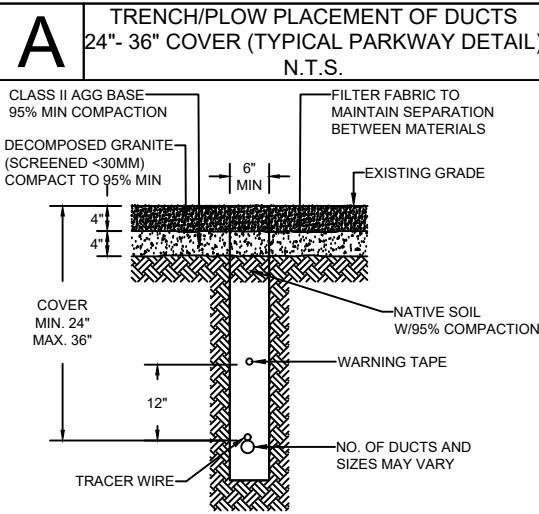
# BILL OF MATERIALS

CONDUIT					CONDUIT					CONDUIT				
CALLOUT	QUANTITY	ITEM DESCRIPTION	LENGTH (FT)	TOTAL	CALLOUT	QUANTITY	ITEM DESCRIPTION	LENGTH (FT)	TOTAL	CALLOUT	QUANTITY	ITEM DESCRIPTION	LENGTH (FT)	TOTAL
1	2	1.25" SDR11 CONDUIT	45	90	76	2	1.25" SDR11 CONDUIT	215	430	150	2	1.25" SDR11 CONDUIT	70	140
2	2	1.25" SDR11 CONDUIT	5	10	77	2	1.25" SDR11 CONDUIT	45	90	151	2	1.25" SDR11 CONDUIT	40	80
3	2	1.25" SDR11 CONDUIT	185	370	78	2	1.25" SDR11 CONDUIT	10	20	152	2	1.25" SDR11 CONDUIT	10	20
4	3	1.25" SDR11 CONDUIT	65	195	79	2	1.25" SDR11 CONDUIT	330	660	153	2	1.25" SDR11 CONDUIT	380	760
5	1	1.25" SDR11 CONDUIT	30	30	80	2	1.25" SDR11 CONDUIT	510	1020	154	2	1.25" SDR11 CONDUIT	20	40
6	3	1.25" SDR11 CONDUIT	35	105	81	2	1.25" SDR11 CONDUIT	40	80	155	2	1.25" SDR11 CONDUIT	350	700
7	3	1.25" SDR11 CONDUIT	195	585	82	4	1.25" SDR11 CONDUIT	145	580	156	2	1.25" SDR11 CONDUIT	10	20
8	3	1.25" SDR11 CONDUIT	450	1350	83	2	1.25" SDR11 CONDUIT	10	20	157	2	1.25" SDR11 CONDUIT	110	220
9	2	1.25" SDR11 CONDUIT	461	922	84	2	1.25" SDR11 CONDUIT	10	20	158	2	1.25" SDR11 CONDUIT	10	20
10	2	1.25" SDR11 CONDUIT	165	330	85	4	1.25" SDR11 CONDUIT	70	280	159	3	1.25" SDR11 CONDUIT	115	345
11	2	1.25" SDR11 CONDUIT	10	20	86	2	1.25" SDR11 CONDUIT	40	80	160	1	1.25" SDR11 CONDUIT	10	10
12	2	1.25" SDR11 CONDUIT	150	300	87	2	1.25" SDR11 CONDUIT	250	500	161	2	1.25" SDR11 CONDUIT	290	580
13	2	1.25" SDR11 CONDUIT	10	20	88	2	1.25" SDR11 CONDUIT	10	20	162	2	1.25" SDR11 CONDUIT	10	20
14	2	1.25" SDR11 CONDUIT	150	300	89	2	1.25" SDR11 CONDUIT	380	760	163	2	1.25" SDR11 CONDUIT	150	300
15	2	1.25" SDR11 CONDUIT	10	20	90	2	1.25" SDR11 CONDUIT	176	352	164	2	1.25" SDR11 CONDUIT	10	20
16	2	1.25" SDR11 CONDUIT	280	560	91	3	1.25" SDR11 CONDUIT	285	855	165	2	1.25" SDR11 CONDUIT	240	480
17	2	1.25" SDR11 CONDUIT	10	20	92	2	1.25" SDR11 CONDUIT	10	20	166	2	1.25" SDR11 CONDUIT	10	20
18	2	1.25" SDR11 CONDUIT	35	70	93	2	1.25" SDR11 CONDUIT	320	640	167	2	1.25" SDR11 CONDUIT	40	80
19	2	1.25" SDR11 CONDUIT	160	320	94	2	1.25" SDR11 CONDUIT	439	878	168	2	1.25" SDR11 CONDUIT	292	584
20	2	1.25" SDR11 CONDUIT	35	70	95	2	1.25" SDR11 CONDUIT	10	20	169	2	1.25" SDR11 CONDUIT	10	20
21	2	1.25" SDR11 CONDUIT	10	20	96	2	1.25" SDR11 CONDUIT	60	120	170	2	1.25" SDR11 CONDUIT	252	504
22	2	1.25" SDR11 CONDUIT	182	364	97	2	1.25" SDR11 CONDUIT	314	628	171	2	1.25" SDR11 CONDUIT	10	20
23	2	1.25" SDR11 CONDUIT	10	20	98	1	1.25" SDR11 CONDUIT	10	10	172	4	1.25" SDR11 CONDUIT	92	368
24	2	1.25" SDR11 CONDUIT	35	70	99	2	1.25" SDR11 CONDUIT	40	80	173	2	1.25" SDR11 CONDUIT	10	20
25	4	1.25" SDR11 CONDUIT	150	600	100	3	1.25" SDR11 CONDUIT	50	150	174	2	1.25" SDR11 CONDUIT	185	370
26	2	1.25" SDR11 CONDUIT	10	20	101	2	1.25" SDR11 CONDUIT	250	500	175	2	1.25" SDR11 CONDUIT	10	20
27	2	1.25" SDR11 CONDUIT	60	120	102	2	1.25" SDR11 CONDUIT	115	230	176	2	1.25" SDR11 CONDUIT	146	292
28	2	1.25" SDR11 CONDUIT	60	120	103	1	1.25" SDR11 CONDUIT	10	10	177	2	1.25" SDR11 CONDUIT	75	150
29	2	1.25" SDR11 CONDUIT	180	360	104	2	1.25" SDR11 CONDUIT	310	620	178	2	1.25" SDR11 CONDUIT	180	360
30	2	1.25" SDR11 CONDUIT	10	20	105	2	1.25" SDR11 CONDUIT	40	80	179	2	1.25" SDR11 CONDUIT	50	100
31	2	1.25" SDR11 CONDUIT	295	590	106	2	1.25" SDR11 CONDUIT	10	20					
32	2	1.25" SDR11 CONDUIT	10	20	107	2	1.25" SDR11 CONDUIT	72	144					
33	2	1.25" SDR11 CONDUIT	300	600	108	3	1.25" SDR11 CONDUIT	497	1491					
34	2	1.25" SDR11 CONDUIT	10	20	109	3	1.25" SDR11 CONDUIT	600	1800					
35	2	1.25" SDR11 CONDUIT	277	554	110	3	1.25" SDR11 CONDUIT	455	1365					
36	2	1.25" SDR11 CONDUIT	10	20	111	3	1.25" SDR11 CONDUIT	595	1785					
37	2	1.25" SDR11 CONDUIT	218	436	112	2	1.25" SDR11 CONDUIT	336	672					
38	2	1.25" SDR11 CONDUIT	140	280	113	3	1.25" SDR11 CONDUIT	324	972					
39	2	1.25" SDR11 CONDUIT	10	20	114	2	1.25" SDR11 CONDUIT	55	110					
40	2	1.25" SDR11 CONDUIT	151	302	115	3	1.25" SDR11 CONDUIT	331	993					
41	2	1.25" SDR11 CONDUIT	40	80	116	2	1.25" SDR11 CONDUIT	55	110					
42	2	1.25" SDR11 CONDUIT	322	644	117	3	1.25" SDR11 CONDUIT	341	1023					
43	2	1.25" SDR11 CONDUIT	25	50	118	2	1.25" SDR11 CONDUIT	55	110					
44	4	1.25" SDR11 CONDUIT	290	1160	119	3	1.25" SDR11 CONDUIT	320	960					
45	2	1.25" SDR11 CONDUIT	10	20	120	2	1.25" SDR11 CONDUIT	55	110					
46	2	1.25" SDR11 CONDUIT	295	590	121	5	1.25" SDR11 CONDUIT	200	1000					
47	2	1.25" SDR11 CONDUIT	453	906	122	2	1.25" SDR11 CONDUIT	455	910					
48	2	1.25" SDR11 CONDUIT	10	20	123	2	1.25" SDR11 CONDUIT	230	460					
49	2	1.25" SDR11 CONDUIT	300	600	124	1	1.25" SDR11 CONDUIT	10	10					
50	2	1.25" SDR11 CONDUIT	10	20	125	2	1.25" SDR11 CONDUIT	200	400					
51	2	1.25" SDR11 CONDUIT	300	600	126	2	1.25" SDR11 CONDUIT	10	20					
52	2	1.25" SDR11 CONDUIT	10	20	127	2	1.25" SDR11 CONDUIT	375	750					
53	2	1.25" SDR11 CONDUIT	111	222	128	2	1.25" SDR11 CONDUIT	137	274					
54	2	1.25" SDR11 CONDUIT	192	384	129	1	1.25" SDR11 CONDUIT	30	30					
55	2	1.25" SDR11 CONDUIT	170	340	130	2	1.25" SDR11 CONDUIT	230	460					
56	2	1.25" SDR11 CONDUIT	45	90	131	1	1.25" SDR11 CONDUIT	10	10					
57	2	1.25" SDR11 CONDUIT	105	210	132	2	1.25" SDR11 CONDUIT	516	1032					
58	2	1.25" SDR11 CONDUIT	10	20	133	2	1.25" SDR11 CONDUIT	40	80					
59	4	1.25" SDR11 CONDUIT	280	1120	134	3	1.25" SDR11 CONDUIT	150	450					
60	2	1.25" SDR11 CONDUIT	10	20	135	2	1.25" SDR11 CONDUIT	195	390					
61	2	1.25" SDR11 CONDUIT	317	634	136	2	1.25" SDR11 CONDUIT	40	80					
62	2	1.25" SDR11 CONDUIT	10	20	137	2	1.25" SDR11 CONDUIT	283	566					
63	2	1.25" SDR11 CONDUIT	315	630	138	3	1.25" SDR11 CONDUIT	115	345					
64	2	1.25" SDR11 CONDUIT	10	20	139	2	1.25" SDR11 CONDUIT	90	180					
65	2	1.25" SDR11 CONDUIT	295	590	140	3	1.25" SDR11 CONDUIT	178	534					
66	2	1.25" SDR11 CONDUIT	10	20	141	2	1.25" SDR11 CONDUIT	60	120					
67	2	1.25" SDR11 CONDUIT	300	600	142	2	1.25" SDR11 CONDUIT	115	230					
68	2	1.25" SDR11 CONDUIT	10	20	143	3	1.25" SDR11 CONDUIT	360	1080					
69	2	1.25" SDR11 CONDUIT	310	620	144	2	1.25" SDR11 CONDUIT	55	110					
70	2	1.25" SDR11 CONDUIT	10	20	145	2	1.25" SDR11 CONDUIT	135	270					
71	2	1.25" SDR11 CONDUIT	146	292	146	2	1.25" SDR11 CONDUIT	120	240					
72	2	1.25" SDR11 CONDUIT	159	318	147	2	1.25" SDR11 CONDUIT	263	526					
73	2	1.25" SDR11 CONDUIT	45	90	148	2	1.25" SDR11 CONDUIT	10	20					
74	2	1.25" SDR11 CONDUIT	10	20	149	2	1.25" SDR11 CONDUIT	35	70					

CONDUIT			BOXES		
CALLOUT	ITEM DESCRIPTION	STATION - DWG#	CALLOUT	ITEM DESCRIPTION	STATION - DWG#
FP#1	10X10X12 FLOWER POT (@ GRADE)	STA 5+95 - DWG#6	SB#23649	24X36X36TR (@ GRADE)	STA N/A - DWG#7
FP#2	10X10X12 FLOWER POT (@ GRADE)	STA 7+46 - DWG#6	SB#23650	24X36X36TR (@ GRADE)	STA N/A - DWG#7
FP#3	10X10X12 FLOWER POT (@ GRADE)	STA 9+21 - DWG#6	SB#23661	24X36X36TR (@ GRADE)	STA 9+30 - DWG#5
FP#4	10X10X12 FLOWER POT (@ GRADE)	STA N/A - DWG#6	SB#23686	24X36X36TR (@ GRADE)	STA 5+95 - DWG#6
FP#5	10X10X12 FLOWER POT (@ GRADE)	STA 4+35 - DWG#7	SB#23703	24X36X36TR (@ GRADE)	STA 3+20 - DWG#9
FP#6	10X10X12 FLOWER POT (@ GRADE)	STA 2+71 - DWG#7	SB#23704	24X36X36TR (@ GRADE)	STA N/A - DWG#7
FP#7	10X10X12 FLOWER POT (@ GRADE)	STA 2+71 - DWG#7	SB#23706	24X36X36TR (@ GRADE)	STA 7+46 - DWG#6
FP#8	10X10X12 FLOWER POT (@ GRADE)	STA N/A - DWG#8	SB#23717	11X18X12TR (@ GRADE)	STA N/A - DWG#9
FP#9	10X10X12 FLOWER POT (@ GRADE)	STA N/A - DWG#9	SB#23720	11X18X12TR (@ GRADE)	STA 9+21 - DWG#6
FP#10	10X10X12 FLOWER POT (@ GRADE)	STA 4+85 - DWG#9	SB#23737	11X18X12TR (@ GRADE)	STA 14+25 - DWG#7
FP#11	10X10X12 FLOWER POT (@ GRADE)	STA 6+71 - DWG#9	SB#23738	24X36X36TR (@ GRADE)	STA N/A - DWG#7
FP#12	10X10X12 FLOWER POT (@ GRADE)	STA 4+58 - DWG#10	SB#23744	24X36X36TR (@ GRADE)	STA 10+70 - DWG#6
FP#13	10X10X12 FLOWER POT (@ GRADE)	STA 6+54 - DWG#10	SB#23745	24X36X36TR (@ GRADE)	STA N/A - DWG#10
FP#14	10X10X12 FLOWER POT (@ GRADE)	STA 4+02 - DWG#12	SB#23747	11X18X12TR (@ GRADE)	STA 11+00 - DWG#6
FP#15	10X10X12 FLOWER POT (@ GRADE)	STA 11+22 - DWG#17	SB#23808	24X36X36TR (@ GRADE)	STA N/A - DWG#7
FP#16	10X10X12 FLOWER POT (@ GRADE)	STA 3+52 - DWG#17	SB#23821	11X18X12TR (@ GRADE)	STA 20+23 - DWG#10
FP#17	10X10X12 FLOWER POT (@ GRADE)	STA N/A - DWG#17	SB#23842	24X36X36TR (@ GRADE)	STA 3+25 - DWG#7
FP#18	10X10X12 FLOWER POT (@ GRADE)	STA 4+92 - DWG#17	SB#23847	24X36X36TR (@ GRADE)	STA N/A - DWG#10
FP#19	10X10X12 FLOWER POT (@ GRADE)	STA 7+16 - DWG#18	SB#23860	24X36X36TR (@ GRADE)	STA N/A - DWG#8
FP#20	10X10X12 FLOWER POT (@ GRADE)	STA 7+88 - DWG#18	SB#23908	11X18X12TR (@ GRADE)	STA N/A - DWG#8
FP#21	10X10X12 FLOWER POT (@ GRADE)	STA 33+92 - DWG#11	SB#23909	11X18X12TR (@ GRADE)	STA 24+76 - DWG#10
FP#22	10X10X12 FLOWER POT (@ GRADE)	STA 37+17 - DWG#11	SB#23939	24X36X36TR (@ GRADE)	STA N/A - DWG#11
FP#23	10X10X12 FLOWER POT (@ GRADE)	STA 40+55 - DWG#13	SB#23942	24X36X36TR (@ GRADE)	STA N/A - DWG#8
FP#24	10X10X12 FLOWER POT (@ GRADE)	STA 43+77 - DWG#13	SB#23951	24X36X36TR (@ GRADE)	STA 30+70 - DWG#11
FP#25	10X10X12 FLOWER POT (@ GRADE)	STA 14+69 - DWG#14	SB#24011	24X36X36TR (@ GRADE)	STA 33+92 - DWG#11
FP#26	10X10X12 FLOWER POT (@ GRADE)	STA 5+20 - DWG#15	SB#24205	24X36X36TR (@ GRADE)	STA 12+58 - DWG#15
FP#27	10X10X12 FLOWER POT (@ GRADE)	STA 8+80 - DWG#15	SB#24025	11X18X12TR (@ GRADE)	STA 11+52 - DWG#15
FP#28	10X10X12 FLOWER POT (@ GRADE)	STA 48+66 - DWG#13	SB#24031	2	

**CONSTRUCTION NOTES**

- THE LOCATION OF EXISTING UTILITIES ARE FOR REFERENCE AND ARE SHOWN IN THEIR APPROXIMATE LOCATION ONLY. EXACT LOCATIONS MUST BE LOCATED BY UNDERGROUND SERVICE ALERT BEFORE ANY DIGGING.
- THE CONTRACTOR SHALL HAVE A COPY OF THE APPROVED CONSTRUCTION PLANS AND APPROVED TRAFFIC CONTROL PLAN AT THE PROJECT SITE AT ALL TIMES.
- ALL UTILITIES CROSSING EXISTING CITY STREETS MUST BE BORED OR PUNCHED, UNLESS PERMISSION TO OPEN CUT HAS BEEN GIVEN IN WRITING BY THE CITY ENGINEER OR HIS AUTHORIZED REPRESENTATIVE. BEFORE STARTING ANY STREET BORE THAT CROSSES A MAJOR ROADWAY, THE CONTRACTOR MUST SCHEDULE A SEPARATE FIELD MEETING WITH THE PROJECT INSPECTOR TO VERIFY THAT ALL UNDERGROUND SERVICE ALERT AND DESIGN REQUIREMENTS ARE MET.
- THE UTILITY COMPANY SHALL CALL THE ENGINEERING DIVISION 24 HOURS IN ADVANCE OF STARTING WORK GIVING LOCATION AND PERMIT NUMBER IN ORDER TO SCHEDULE INSPECTIONS. STATUS UPDATES SHALL BE MADE WEEKLY.
- ALIGNMENT ON PLANS MAY NOT DEVIATE MORE THAN 1' WITHOUT GETTING THE APPROVAL OF THE GOVERNING AGENCY.
- ALL WORK REQUIRING ASPHALT REPLACEMENT, CONCRETE REPLACEMENT OR RESURFACING IN CITY RIGHT OF WAY WILL REQUIRE A FINAL INSPECTION WITH THE UTILITY COMPANY REPRESENTATIVE AT TIME OF COMPLETION.
- ALL STREET EXCAVATIONS SHALL BE TWO SACK SLURRY BACK FILLED. PAVED STREETS AND DRIVEWAYS SHALL BE REPAVED IN A MANNER THAT MATCHES THE PAVEMENT PRIOR TO CONSTRUCTION. ANY TRENCHES ON PRIVATE PROPERTY DO NOT REQUIRE SLURRY BACKFILL BUT ARE REQUIRED TO COMPACT TO 90%.
- PROTECTIVE DEVICES ARE REQUIRED! THESE PROTECTIVE DEVICES INCLUDE, ORANGE VEST (DAYTIME), REFLECTIVE ORANGE VEST (NIGHTTIME), TRAFFIC CONES, BARRICADES FLASHING LIGHTS, FLARES, AND ANY OTHER TRAFFIC CONTROL DEVICE AS REQUIRED.
- THE CONTRACTOR WILL SUBMIT A TRAFFIC CONTROL PLAN AS PART OF THE CONSTRUCTION PERMIT APPLICATION FOR ACTIVITIES ALONG STATE HIGHWAYS AND COUNTY ROADS. THE PLAN MUST FOLLOW THE RULES AND REGULATIONS OF THE GOVERNING AGENCY AND BE CONSISTENT WITH CONTRACTOR CONSTRUCTION METHODS AND ALL PLANNED ACTIVITIES ALONG STATE HIGHWAY AND COUNTY ROADS.
- THE TRENCH BOTTOM SHALL BE SMOOTH, FLAT, AND WITHOUT SURFACE IRREGULARITIES; OTHERWISE, A SUFFICIENT AMOUNT OF BEDDING MATERIAL SHALL BE INSTALLED TO PROVIDE THE REQUIRED SURFACE. MAINTAIN A MINIMUM OF 36" COVER WITH 6" BACK FILL FREE OF DEBRIS, ROCKS AND CLODS.
- ALL CONDUIT TO HAVE MINIMUM 24" COVER UNLESS OTHERWISE NOTED ON DRAWING SHEETS.
- ROW DEPICTED ON THESE DRAWINGS HAVE NOT BEEN SURVEYED AND ARE REPRESENTED USING AVAILABLE RECORDS AND FIELD ARTIFACTS.



**SPANDREL NOTE:**  
DO NOT CUT ANY SPANDRELS UNLESS ABSOLUTELY REQUIRED. IF POTHOLING IS REQUIRED, RESTORE AREA TO LIKE OR NEW CONDITION



JOB NO. HIDDEN HILLS - PHASE 2  
LOCATION HIDDEN HILLS, CA  
ENGR JOY PADILLA TEL 909-457-8448

SUBJECT TYPICAL CONSTRUCTION DETAILS  
TYPE OF CONST DUCT PLACEMENT  
DWG 3 OF 19

VERSION 09/07/2023

**SHEET INDEX**  
DWG 1 - COVER PAGE  
DWG 2 - BILL OF MATERIALS  
DWG 3 - TYPICAL CONST. DETAILS  
DWG 4 - TYPICAL BOX DETAILS  
DWG 5 TO 19 - CONDUIT DESIGN

### A 1010/12 FLOWERPOT DETAIL

SKU: 10005049

Compare to: Christy®G05T

MARKING OPTION CODES:  
 -00 BLANK  
 -11 WATER  
 -13 SEWER  
 -14 GROUND ROD

MODEL NO.	PRODUCT	DESCRIPTION	APPROX. WEIGHT	QTY PER PALLET
HTV10-S-CL-1	LID	10"x12" Traffic Valve Box Cover - Import	14	N/A
HTV10-S-BD-1	VALVE BOX	10"x12" Traffic Valve Box - Import	63	36
HTV10-S-CL-USA	LID	10"x12" Traffic Valve Box Cover - USA	14	N/A
HTV10-S-BD-USA	VALVE BOX	10"x12" Traffic Valve Box - USA	14	36

### B 1118/12 TIER 22 HANDHOLE DETAIL

SKU: 200059176

Hardware:

- Stainless Steel 1/2" and 3/4"
- Hex Head Standard Bolts
- Penta Head Bolts
- One Way Security Bolts
- Security Torque Bolts

Options:

- Standard and custom Nameplates
- Mouse Holes
- Knock Outs
- Power EMS Cover
- AMR Cover

Load Ratings:

- ANSI/SCTE77 Tier 15 & Tier 22
- WUC 3.6

Boxes are Open Bottom and Stackable

PART NO.	DESCRIPTION	APPROX. WEIGHT LBS.	QTY. PER PALLET
200016525	HPC 1118-12 Straight Wall Polymer Concrete Handhole Box w/ 1/2-13 SS Nut	56.00	1
200016489	HPC 1118-12 Configurable TIER-22 Solid Polymer Concrete Handhole Cover	NA	1

### C 2436/36 TIER 22 HANDHOLE DETAIL

SKU: 200059032

Hardware:

- Stainless Steel 1/2" and 3/4"
- Hex Head Standard Bolts
- Penta Head Bolts
- One Way Security Bolts
- Security Torque Bolts

Options:

- Standard and custom Nameplates
- Mouse Holes
- Knock Outs
- Power EMS Cover
- AMR Cover

Load Ratings:

- ANSI/SCTE77 Tier 15 & Tier 22
- WUC 3.6

Boxes are Open Bottom and Stackable

PART NO.	DESCRIPTION	APPROX. WEIGHT LBS.	QTY. PER PALLET
200022186	HPC 2436-36 Straight Wall Polymer Concrete Handhole Box w/ 1/2-13 SS Nut	86	1
100032420	HPC 2436-36 Bolt Down TIER-22 Solid Polymer Concrete Handhole Cover BLANK	NA	1

### D FLOWERPOT & HANDHOLE OFFSET DETAIL

NOTES:

- HANDHOLE AND FLOWERPOT OFFSETS ARE MEASURED FROM CENTER OF HANDHOLE/FLOWERPOT.
- HANDHOLE AND FLOWERPOT OFFSETS ARE 4' OFF FENCE. IF NO FENCE IS AVAILABLE, USE PROPERTY LINE.
- IN LOCATIONS WHERE 4' OFFSET FROM FENCE/PROPERTY LINE IS NOT FEASIBLE DUE TO SPACE RESTRICTION, PLACE EDGE OF HANDHOLE/FLOWERPOT AGAINST FENCE/PROPERTY LINE.
- DO NOT PLACE ANY HANDHOLE/FLOWERPOT IN THE STREET. ALL HANDHOLE/FLOWERPOT SHALL BE PLACED IN THE SHOULDER WITHIN THE PUE.
- TRENCHLINE OFFSETS ARE VARIABLE AND ARE NOTED ON APPLICABLE DRAWINGS.

FROM FENCE/PL TO CENTER OF BOX IS A 4' OFFSET

TRENCH OFFSET IS VARIABLE, SEE DRAWINGS

1010/12 FLOWERPOT  
1118/12 TIER 22 HANDHOLE  
2436/36 TIER 22 HANDHOLE

1010/12 FLOWERPOT  
1118/12 TIER 22 HANDHOLE

### E 1730 HANDHOLE DETAIL

17" x 30" x 11" (INSIDE DIMENSIONS)

MEETS CALTRANS # 6T  
NDOT #7, ADOT #7 SPECIFICATIONS

DESIGN LOAD: H-20 FULL TRAFFIC

CATALOG NUMBER	PRODUCT	DESCRIPTION	APPROX. WT. (LBS.)
CYB1730	BOX WITH SLAB	REINFORCED CONCRETE	288
CY1730SL	COVER	STEEL CHECKER PLATE	112
CY1730EXT	EXTENSION	12" HIGH REINFORCED CONCRETE	244
CYHDB1730	HOLD DOWN BOLT	HOLD DOWN PENTAHEAD BOLT (2 EA.)	

### F 3048 HANDHOLE DETAIL

WHEN ORDERING:  
 THE STANDARD SBC AR3048 KIT INCLUDES THE AR3048 BOX, (2) AR3048 EXTENSIONS, AR3048 LID, AND THE AR3048 SLAB. FOR OTHER COMPONENTS, ORDER BY CATALOG NUMBER.

CATALOG NUMBER	PRODUCT	DESCRIPTION	APPROX. WT. (LBS.)
AR3048	BOX	POLYMER CONCRETE 18"	190 LBS.
AR304802TELE	LID	POLYMER CONCRETE 3"	94 LBS.
AR3048EX	EXTENSION	POLYMER CONCRETE 12"	136 LBS.
AR3048SL	SLAB	POLYMER CONCRETE 2"	120 LBS.

DESIGN LOAD: LIGHT VEHICULAR TRAFFIC, 10,000 WHEEL LOAD

**Onward**  
Get Connected. Get Faster.

JOB NO. HIDDEN HILLS - PHASE 2

LOCATION HIDDEN HILLS, CA

ENGR JOY PADILLA TEL 909-457-8448

SUBJECT TRENCH ALIGNMENT

TYPE OF CONST DUCT PLACEMENT

DWG 5 OF 19

VERSION 09/07/2023

0 100' 200'

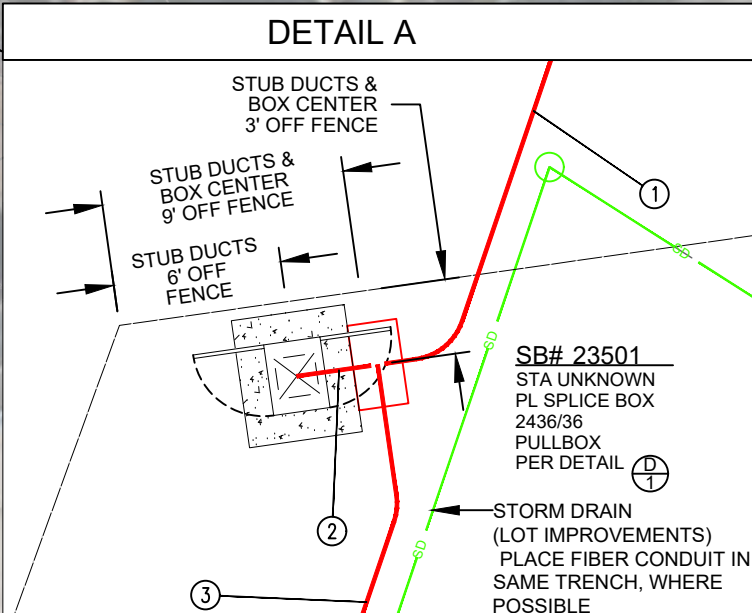
### SHEET INDEX

DWG 1 - COVER PAGE  
 DWG 2 - BILL OF MATERIALS  
 DWG 3 - TYPICAL CONST. DETAILS  
 DWG 4 - TYPICAL BOX DETAILS  
 DWG 5 TO 19 - CONDUIT DESIGN

**PLACEMENT NOTES:**

CALLOUT 1-4 SHOULD BE COMPLETED AS PART OF THE PARKING LOT IMPROVEMENT PROJECT.

- |  |  |   |   |   |
|--|--|---|---|---|
| ① POLE TO SB#23501<br>PLACE 45'<br>② 1.25" SDR11<br>PER DETAIL (A/3)   | ③ SB#23501 TO PT. A<br>PLACE 185'<br>② 1.25" SDR11<br>PER DETAIL (A/3) (J/3)       | ⑤ PT. A TO 1+94 TO GUARD SHACK 94<br>PLACE 30'<br>① 1.25" SDR11<br>PER DETAIL (J/3) | ⑦ SB#23537 2+91 TO SB#23557 STA 4+82<br>PLACE 195'<br>③ 1.25" SDR11<br>PER DETAIL (A/3) | ⑨ SB#23661 9+30 TO SB#23628 STA 3+16<br>PLACE 461'<br>② 1.25" SDR11<br>PER DETAIL (A/3) (C/3) |
| ② SB#23501 TO CABINET<br>PLACE 5'<br>② 1.25" SDR11<br>PER DETAIL (A/3) | ④ PT. A TO 1+94 TO STUB OUT 2+59<br>PLACE 65'<br>③ 1.25" SDR11<br>PER DETAIL (J/3) | ⑥ STUB OUT 2+59 TO SB#23537 2+91<br>PLACE 35'<br>③ 1.25" SDR11<br>PER DETAIL (A/3)  | ⑧ SB#23557 4+82 TO SB#23661 STA 9+30<br>PLACE 450'<br>③ 1.25" SDR11<br>PER DETAIL (A/3) | ⑩ SB#23628 3+16 TO SB#23616<br>PLACE 165'<br>② 1.25" SDR11<br>PER DETAIL (B/3)                |
|  |  |   |   | ⑪ SB#23616 TO RISER POLE<br>PLACE 10'<br>② 1.25" SDR11<br>PER DETAIL (B/3) (K/3)              |
|  |  |   |   | ⑫ SB#23616 TO SB#23600<br>PLACE 150'<br>② 1.25" SDR11<br>PER DETAIL (B/3)                     |
|  |  |   |   | ⑬ SB#23600 TO RISER POLE<br>PLACE 10'<br>② 1.25" SDR11<br>PER DETAIL (B/3) (K/3)              |
|  |  |   |   | ⑭ SB#23600 TO SB#23500<br>PLACE 150'<br>② 1.25" SDR11<br>PER DETAIL (B/3)                     |
|  |  |   |   | ⑮ SB#23500 TO RISER POLE<br>PLACE 10'<br>② 1.25" SDR11<br>PER DETAIL (B/3) (K/3)              |
|  |  |   |   | ⑯ SB#23628 3+16 TO SB#23686 5+95<br>PLACE 280'<br>② 1.25" SDR11<br>PER DETAIL (A/3)           |
|  |  |   |   | ⑲ SB#23628 3+16 TO SB#23650<br>PLACE 180'<br>② 1.25" SDR11<br>PER DETAIL (B/3) (J/3)          |
|  |  |   |   | ⑵① SB#23661 9+30 TO SB#23649<br>PLACE 300'<br>② 1.25" SDR11<br>PER DETAIL (B/3)               |
|  |  |   |   | ⑵② SB#23661 9+30 TO SB#23737 14+25<br>PLACE 497'<br>③ 1.25" SDR11<br>PER DETAIL (A/3) (J/3)   |





**PLACEMENT NOTES:**

- ① SB#23628 3+16 TO  
SB#23686 5+95  
PL'D ON DWG#5  
② 1.25" SDR11  
PER DETAIL  $\frac{A}{3}$
- ② SB#23686 5+95 TO  
RISER POLE  
PLACE 10'  
② 1.25" SDR11  
PER DETAIL  $\frac{A}{3}$   $\frac{K}{3}$
- ③ SB#23686 5+95 TO  
FP#1 5+95  
PLACE 35'  
② 1.25" SDR11  
PER DETAIL  $\frac{A}{3}$   $\frac{J}{3}$
- ④ SB#23686 5+95 TO  
SB#23706 7+46  
PLACE 160'  
② 1.25" SDR11  
PER DETAIL  $\frac{A}{3}$
- ⑤ SB#23706 7+46 TO  
FP#2 7+46  
PLACE 35'  
② 1.25" SDR11  
PER DETAIL  $\frac{A}{3}$   $\frac{J}{3}$
- ⑥ SB#23706 7+46 TO  
SB#23720 9+21  
PLACE 182'  
② 1.25" SDR11  
PER DETAIL  $\frac{A}{3}$
- ⑦ SB#23720 9+21  
RISER POLE  
PLACE 10'  
② 1.25" SDR11  
PER DETAIL  $\frac{A}{3}$   $\frac{K}{3}$
- ⑧ SB#23720 9+21  
FP#3 9+21  
PLACE 35'  
② 1.25" SDR11  
PER DETAIL  $\frac{A}{3}$   $\frac{J}{3}$
- ⑨ SB#23720 9+21  
SB#23744 10+70  
PLACE 150'  
④ 1.25" SDR11  
PER DETAIL  $\frac{A}{3}$
- ⑩ SB#23744 10+70  
RISER POLE  
PLACE 10'  
② 1.25" SDR11  
PER DETAIL  $\frac{A}{3}$   $\frac{K}{3}$
- ⑪ SB#23744 10+70  
FP#4  
PLACE 60'  
② 1.25" SDR11  
PER DETAIL  $\frac{A}{3}$
- ⑫ SB#23744 10+70  
SB#23747 11+00  
PLACE 60'  
② 1.25" SDR11  
PER DETAIL  $\frac{A}{3}$   $\frac{J}{3}$



JOB NO. HIDDEN HILLS - PHASE 2  
 LOCATION HIDDEN HILLS, CA  
 ENGR JOY PADILLA TEL 909-457-8448

SUBJECT  
**TRENCH ALIGNMENT**  
 TYPE OF CONST  
**DUCT PLACEMENT**  
 DWG 6 OF 19

VERSION  
 09/07/2023

**SHEET INDEX**  
 DWG 1 - COVER PAGE  
 DWG 2 - BILL OF MATERIALS  
 DWG 3 - TYPICAL CONST. DETAILS  
 DWG 4 - TYPICAL BOX DETAILS  
 DWG 5 TO 19 - CONDUIT DESIGN

TO SB#23821  
SEE DWG#10

**PLACEMENT NOTES:**

- 29 SB#23628 3+16 TO SB#23650 PL'D ON DWG#5 (2) 1.25" SDR11 PER DETAIL (B/3) (J/3)
- 30 SB#23650 TO RISER POLE PLACE 10' (2) 1.25" SDR11 PER DETAIL (B/3) (K/3)
- 31 SB#23650 TO SB#23704 PLACE 295' (2) 1.25" SDR11 PER DETAIL (B/3)
- 32 SB#23704 TO RISER POLE PLACE 10' (2) 1.25" SDR11 PER DETAIL (B/3) (K/3)
- 33 SB#23704 TO SB#23738 PLACE 300' (2) 1.25" SDR11 PER DETAIL (B/3)
- 34 SB#23738 TO RISER POLE PLACE 10' (2) 1.25" SDR11 PER DETAIL (B/3) (K/3)
- 35 SB#23738 TO SB#23808 PLACE 277' (2) 1.25" SDR11 PER DETAIL (B/3)
- 36 SB#23808 TO RISER POLE PLACE 10' (2) 1.25" SDR11 PER DETAIL (B/3) (K/3)
- 37 SB#23808 TO SB#23842 3+23 PLACE 218' (2) 1.25" SDR11 PER DETAIL (B/3) (J/3)
- 38 SB#23842 3+23 TO FP#5 4+35 PLACE 140' (2) 1.25" SDR11 PER DETAIL (B/3) (J/3)
- 39 SB#23842 3+23 TO RISER POLE PLACE 10' (2) 1.25" SDR11 PER DETAIL (B/3) (K/3)
- 40 SB#23842 3+23 TO FP#6 2+71 PLACE 151' (2) 1.25" SDR11 PER DETAIL (A/3)
- 41 FP#6 2+71 TO FP#7 2+71 PLACE 40' (2) 1.25" SDR11 PER DETAIL (J/3)
- 42 SB#23842 3+23 TO SB#23860 PLACE 322' (2) 1.25" SDR11 PER DETAIL (B/3)
- 108 SB#23661 9+30 TO SB#23737 14+25 PL'D ON DWG#5 (3) 1.25" SDR11 PER DETAIL (A/3) (J/3)
- 109 SB#23737 14+25 TO SB#23821 20+25 PLACE 600' (3) 1.25" SDR11 PER DETAIL (A/3)



	JOB NO. <u>HIDDEN HILLS - PHASE 2</u>	SUBJECT <b>TRENCH ALIGNMENT</b>	VERSION 09/07/2023		<b>SHEET INDEX</b> DWG 1 - COVER PAGE DWG 2 - BILL OF MATERIALS DWG 3 - TYPICAL CONST. DETAILS DWG 4 - TYPICAL BOX DETAILS DWG 5 TO 19 - CONDUIT DESIGN
	LOCATION <u>HIDDEN HILLS, CA</u>	TYPE OF CONST <b>DUCT PLACEMENT</b>			
ENGR <u>JOY PADILLA</u>	TEL <u>909-457-8448</u>	DWG <u>7</u> OF <u>19</u>			

844-994-4448



**PLACEMENT NOTES:**

- ④2 SB#23842 3+23 TO SB#23860  
PL'D ON DWG#7  
② 1.25" SDR11  
PER DETAIL (B/3)
- ④3 SB#23860 TO RISER POLE  
PLACE 25'  
② 1.25" SDR11  
PER DETAIL (B/3) (K/3)
- ④4 SB#23860 TO SB#23908  
PLACE 290'  
④ 1.25" SDR11  
PER DETAIL (B/3)
- ④5 SB#23908 TO RISER POLE  
PLACE 10'  
② 1.25" SDR11  
PER DETAIL (B/3) (K/3)
- ④6 SB#23908 TO SB#23942  
PLACE 295'  
② 1.25" SDR11  
PER DETAIL (B/3)
- ④7 SB#23908 TO FP#8  
PLACE 453'  
② 1.25" SDR11  
PER DETAIL (B/3)
- ④8 SB#23942 TO RISER POLE  
PLACE 10'  
② 1.25" SDR11  
PER DETAIL (B/3) (K/3)
- ④9 SB#23942 TO SB#5305  
PLACE 169'  
② 1.25" SDR11  
PER DETAIL (B/3)



844-994-4448

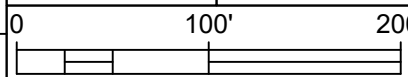
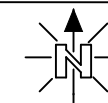
JOB NO. HIDDEN HILLS - PHASE 2  
 LOCATION HIDDEN HILLS, CA  
 ENGR JOY PADILLA TEL 909-457-8448

SUBJECT  
**TRENCH ALIGNMENT**

TYPE OF CONST  
**DUCT PLACEMENT**

DWG 8 OF 19

VERSION  
09/07/2023



**SHEET INDEX**

- DWG 1 - COVER PAGE
- DWG 2 - BILL OF MATERIALS
- DWG 3 - TYPICAL CONST. DETAILS
- DWG 4 - TYPICAL BOX DETAILS
- DWG 5 TO 19 - CONDUIT DESIGN





**PLACEMENT NOTES:**

- (50) SB#23661 9+30 TO SB#23649 PL'D ON DWG#5 (2) 1.25" SDR11 PER DETAIL (B/3)
- (51) SB#23649 TO RISER POLE PLACE 10' (2) 1.25" SDR11 PER DETAIL (B/3) (K/3)
- (52) SB#23649 TO SB#23629 PLACE 300' (2) 1.25" SDR11 PER DETAIL (B/3)
- (53) SB#23629 TO RISER POLE PLACE 10' (2) 1.25" SDR11 PER DETAIL (B/3) (K/3)
- (54) SB#23629 TO FP#9 PLACE 111' (2) 1.25" SDR11 PER DETAIL (B/3)
- (55) SB#23649 TO SB#23703 3+20 PLACE 192' (2) 1.25" SDR11 PER DETAIL (B/3) (J/3)
- (56) SB#23703 3+20 TO SB#5241 4+85 PLACE 170' (2) 1.25" SDR11 PER DETAIL (A/3)
- (57) SB#5241 4+85 TO FP#10 4+85 PLACE 45' (2) 1.25" SDR11 PER DETAIL (A/3) (J/3)
- (58) SB#5241 4+85 TO FP#11 6+71 PLACE 105' (2) 1.25" SDR11 PER DETAIL (A/3)
- (59) SB#23703 3+20 TO RISER POLE PLACE 10' (2) 1.25" SDR11 PER DETAIL (B/3) (K/3)
- (60) SB#23703 3+20 TO SB#23717 PLACE 280' (4) 1.25" SDR11 PER DETAIL (B/3)
- (61) SB#23717 TO RISER POLE PLACE 10' (2) 1.25" SDR11 PER DETAIL (B/3) (K/3)
- (62) SB#23717 TO SB#23745 PLACE 317' (2) 1.25" SDR11 PER DETAIL (B/3)



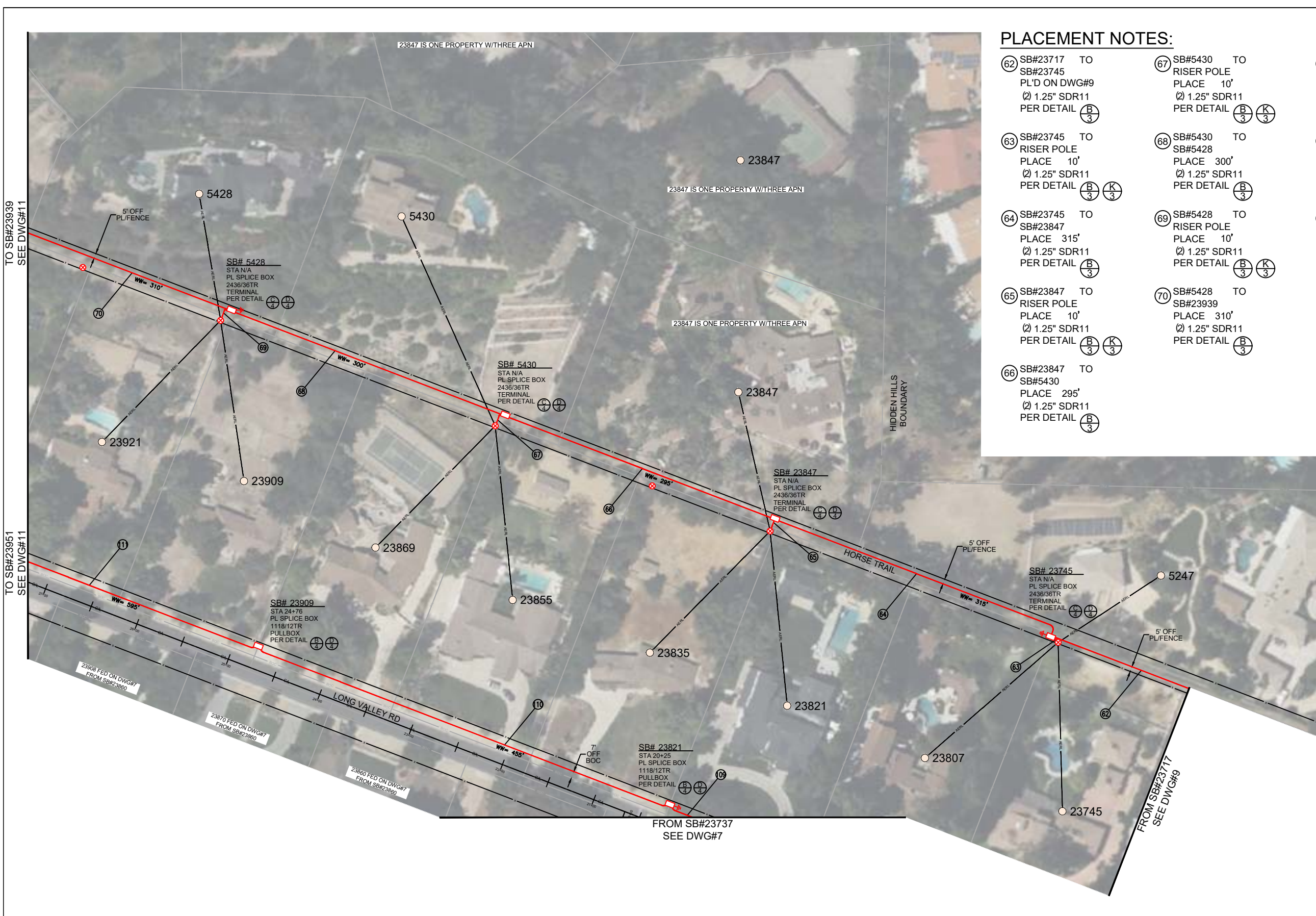
JOB NO. HIDDEN HILLS - PHASE 2  
 LOCATION HIDDEN HILLS, CA  
 ENGR JOY PADILLA TEL 909-457-8448

SUBJECT  
**TRENCH ALIGNMENT**  
 TYPE OF CONST  
**DUCT PLACEMENT**  
 DWG 9 OF 19

VERSION  
 09/07/2023  
 0 100' 200'



SHEET INDEX	
DWG 1 - COVER PAGE	
DWG 2 - BILL OF MATERIALS	
DWG 3 - TYPICAL CONST. DETAILS	
DWG 4 - TYPICAL BOX DETAILS	
DWG 5 TO 19 - CONDUIT DESIGN	



**PLACEMENT NOTES:**

- 62 SB#23717 TO SB#23745 PL'D ON DWG#9 (2) 1.25" SDR11 PER DETAIL (B/3)
- 63 SB#23745 TO RISER POLE PLACE 10' (2) 1.25" SDR11 PER DETAIL (B/3) (K/3)
- 64 SB#23745 TO SB#23847 PLACE 315' (2) 1.25" SDR11 PER DETAIL (B/3)
- 65 SB#23847 TO RISER POLE PLACE 10' (2) 1.25" SDR11 PER DETAIL (B/3) (K/3)
- 66 SB#23847 TO SB#5430 PLACE 295' (2) 1.25" SDR11 PER DETAIL (B/3)
- 67 SB#5430 TO RISER POLE PLACE 10' (2) 1.25" SDR11 PER DETAIL (B/3) (K/3)
- 68 SB#5430 TO SB#5428 PLACE 300' (2) 1.25" SDR11 PER DETAIL (B/3)
- 69 SB#5428 TO RISER POLE PLACE 10' (2) 1.25" SDR11 PER DETAIL (B/3) (K/3)
- 70 SB#5428 TO SB#23939 PLACE 310' (2) 1.25" SDR11 PER DETAIL (B/3)
- 109 SB#23737 14+25 TO SB#23821 20+25 PL'D ON DWG#7 (3) 1.25" SDR11 PER DETAIL (A/3)
- 110 SB#23821 20+25 TO SB#23909 24+76 PLACE 455' (3) 1.25" SDR11 PER DETAIL (A/3)
- 111 SB#23909 24+76 TO SB#23951 30+70 PLACE 595' (3) 1.25" SDR11 PER DETAIL (A/3)

	JOB NO. <u>HIDDEN HILLS - PHASE 2</u>	SUBJECT <b>TRENCH ALIGNMENT</b>	VERSION 09/07/2023		<b>SHEET INDEX</b> DWG 1 - COVER PAGE DWG 2 - BILL OF MATERIALS DWG 3 - TYPICAL CONST. DETAILS DWG 4 - TYPICAL BOX DETAILS DWG 5 TO 19 - CONDUIT DESIGN
	LOCATION <u>HIDDEN HILLS, CA</u>	TYPE OF CONST <b>DUCT PLACEMENT</b>			
ENGR <u>JOY PADILLA</u> TEL <u>909-457-8448</u>	DWG <u>10</u> OF <u>19</u>				

**PLACEMENT NOTES:**

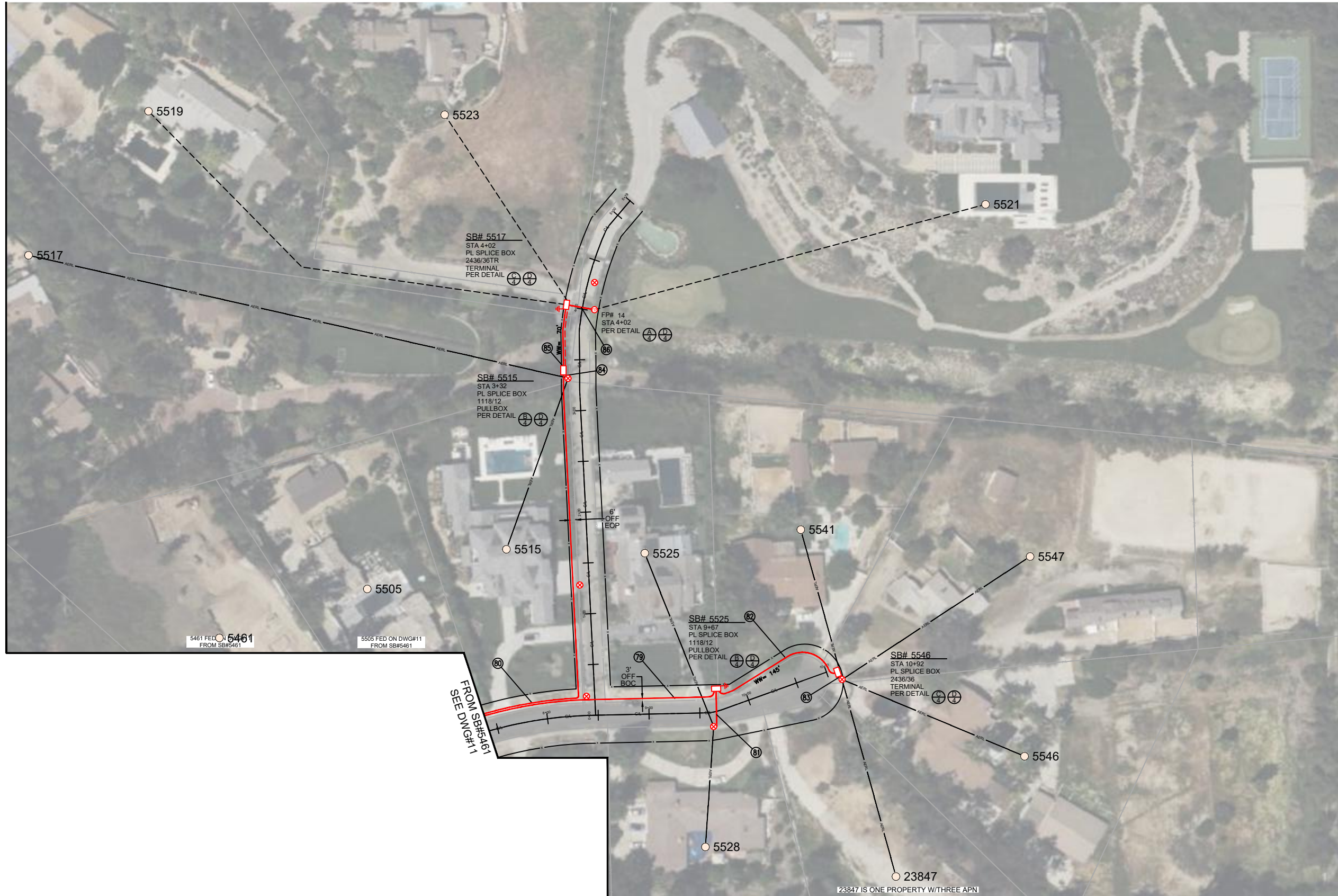
- (70) SB#5428 TO SB#23939 PL'D ON DWG#10 (2) 1.25" SDR11 PER DETAIL (B/3)
- (71) SB#23939 TO RISER POLE PLACE 10' (2) 1.25" SDR11 PER DETAIL (B/3) (K/3)
- (72) SB#23939 TO SB#5450 3+32 PLACE 146' (2) 1.25" SDR11 PER DETAIL (B/3)
- (73) SB#5450 3+32 TO SB#5449 4+58 PLACE 159' (2) 1.25" SDR11 PER DETAIL (A/3) (J/3)
- (74) SB#5449 4+58 TO FP#12 4+58 PLACE 45' (2) 1.25" SDR11 PER DETAIL (A/3) (J/3)
- (75) SB#5449 4+58 TO RISER POLE PLACE 10' (2) 1.25" SDR11 PER DETAIL (A/3) (K/3)
- (76) SB#5449 4+58 TO SB#5461 6+54 PLACE 215' (2) 1.25" SDR11 PER DETAIL (A/3)
- (77) SB#5461 6+46 TO FP#13 6+46 PLACE 45' (2) 1.25" SDR11 PER DETAIL (A/3) (J/3)
- (78) SB#5461 6+46 TO RISER POLE PLACE 10' (2) 1.25" SDR11 PER DETAIL (A/3) (K/3)
- (79) SB#5461 6+46 TO SB#5525 9+67 PLACE 330' (2) 1.25" SDR11 PER DETAIL (A/3) (J/3)
- (80) SB#5461 6+46 TO SB#5515 3+32 PLACE 510' (2) 1.25" SDR11 PER DETAIL (A/3)
- (87) SB#5450 3+32 TO SB#5437 PLACE 250' (2) 1.25" SDR11 PER DETAIL (B/3)
- (88) SB#5437 TO RISER POLE PLACE 10' (2) 1.25" SDR11 PER DETAIL (B/3) (K/3)
- (89) SB#5437 TO SB#24031 PLACE 380' (2) 1.25" SDR11 PER DETAIL (B/3)
- (90) SB#24031 TO SB#5798 PLACE 176' (2) 1.25" SDR11 PER DETAIL (A/3) (B/3)



**PLACEMENT NOTES:**

- (11) SB#23909 24+76 SB#23951 30+70 PL'D ON DWG#10 (3) 1.25" SDR11 PER DETAIL (A/3)
- (12) SB#23951 30+70 TO SB#5450 3+32 PLACE 336' (2) 1.25" SDR11 PER DETAIL (A/3)
- (13) SB#23951 30+70 TO SB#24011 33+92 PLACE 324' (3) 1.25" SDR11 PER DETAIL (A/3) (J/3)
- (14) SB#24011 33+92 TO FP#20 33+92 PLACE 55' (2) 1.25" SDR11 PER DETAIL (A/3) (J/3)
- (15) SB#24011 33+92 TO SB#24051 37+17 PLACE 331' (3) 1.25" SDR11 PER DETAIL (A/3)
- (16) SB#24051 37+17 TO FP#21 37+17 PLACE 55' (2) 1.25" SDR11 PER DETAIL (A/3) (J/3)
- (17) SB#24051 37+17 TO SB#24127 40+55 PLACE 341' (3) 1.25" SDR11 PER DETAIL (A/3) (J/3)

	JOB NO. <u>HIDDEN HILLS - PHASE 2</u>	SUBJECT <b>TRENCH ALIGNMENT</b>	VERSION 09/07/2023		<b>SHEET INDEX</b> DWG 1 - COVER PAGE DWG 2 - BILL OF MATERIALS DWG 3 - TYPICAL CONST. DETAILS DWG 4 - TYPICAL BOX DETAILS DWG 5 TO 19 - CONDUIT DESIGN
	LOCATION <u>HIDDEN HILLS, CA</u>	TYPE OF CONST <b>DUCT PLACEMENT</b>			
ENGR <u>JOY PADILLA</u>	TEL <u>909-457-8448</u>	DWG <u>11</u> OF <u>19</u>			



**PLACEMENT NOTES:**

- 79 SB#5461 6+46 TO  
SB#5525 9+67  
PL'D ON DWG#11  
Ø 1.25" SDR11  
PER DETAIL (A/3) (J/3)
- 80 SB#5461 6+46 TO  
SB#5515 3+32  
PL'D ON DWG#11  
Ø 1.25" SDR11  
PER DETAIL (A/3)
- 81 SB#5525 9+67 TO  
RISER POLE  
PLACE 40'  
Ø 1.25" SDR11  
PER DETAIL (A/3) (K/3)
- 82 SB#5525 9+67 TO  
SB#5546 10+92  
PLACE 145'  
Ø 1.25" SDR11  
PER DETAIL (A/3)
- 83 SB#5546 10+92 TO  
RISER POLE  
PLACE 10'  
Ø 1.25" SDR11  
PER DETAIL (A/3) (K/3)
- 84 SB#5515 3+32 TO  
RISER POLE  
PLACE 10'  
Ø 1.25" SDR11  
PER DETAIL (A/3) (K/3)
- 85 SB#5515 3+32 TO  
SB#5517 4+02  
PLACE 70'  
Ø 1.25" SDR11  
PER DETAIL (A/3)
- 86 SB#5517 4+02 TO  
FP#14 4+02  
PLACE 40'  
Ø 1.25" SDR11  
PER DETAIL (A/3) (J/3)

SEE DWG#16

5461 FED ON 5461 FROM SB#5461

5505 FED ON DWG#11 FROM SB#5461

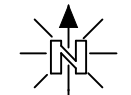
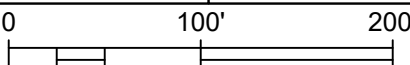
FROM SB#5461 SEE DWG#11

23847 IS ONE PROPERTY WITH THREE APN

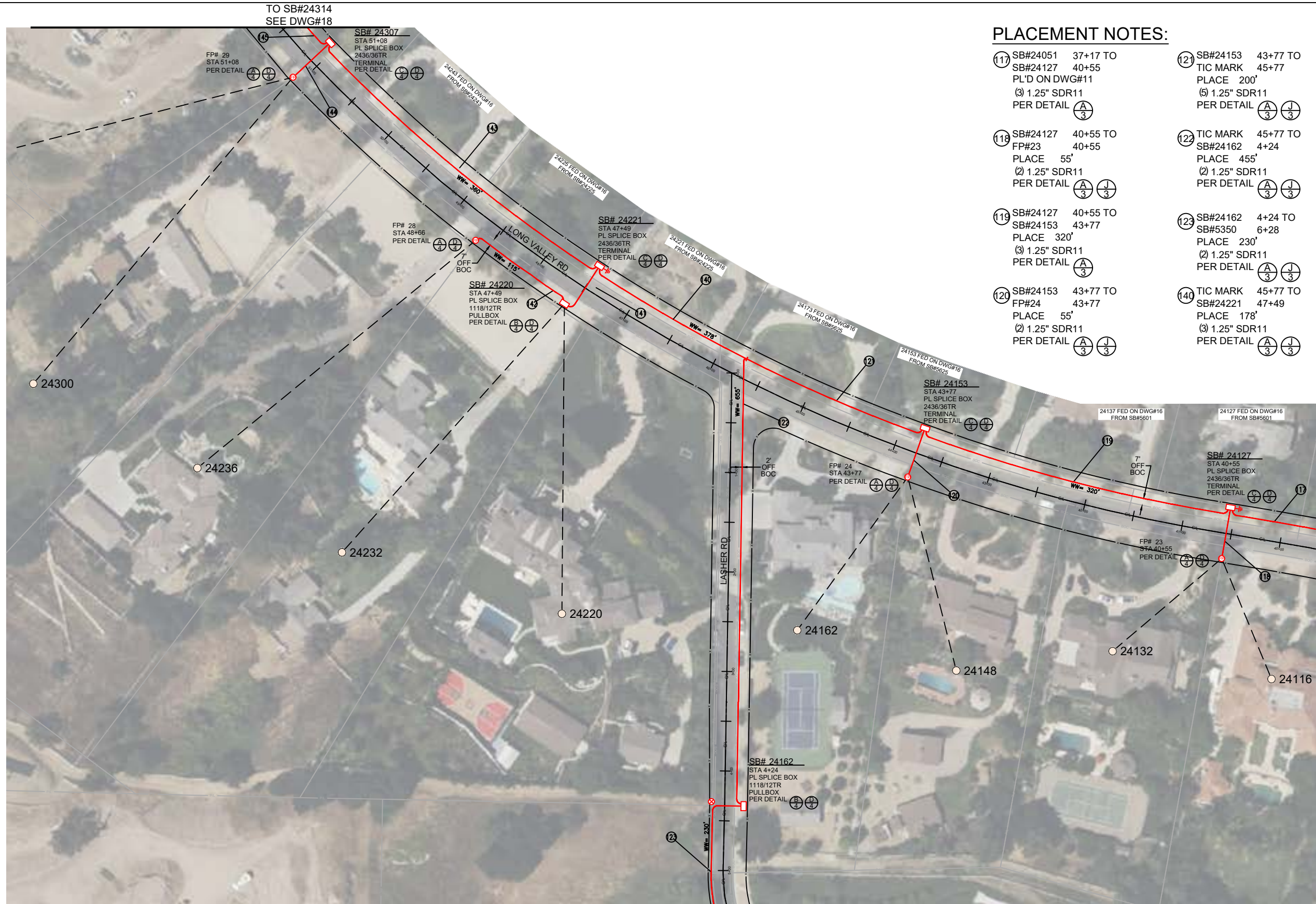


JOB NO. HIDDEN HILLS - PHASE 2  
 LOCATION HIDDEN HILLS, CA  
 ENGR JOY PADILLA TEL 909-457-8448

SUBJECT TRENCH ALIGNMENT  
 TYPE OF CONST DUCT PLACEMENT  
 DWG 12 OF 19

VERSION 09/07/2023  
  


**SHEET INDEX**  
 DWG 1 - COVER PAGE  
 DWG 2 - BILL OF MATERIALS  
 DWG 3 - TYPICAL CONST. DETAILS  
 DWG 4 - TYPICAL BOX DETAILS  
 DWG 5 TO 19 - CONDUIT DESIGN



**PLACEMENT NOTES:**

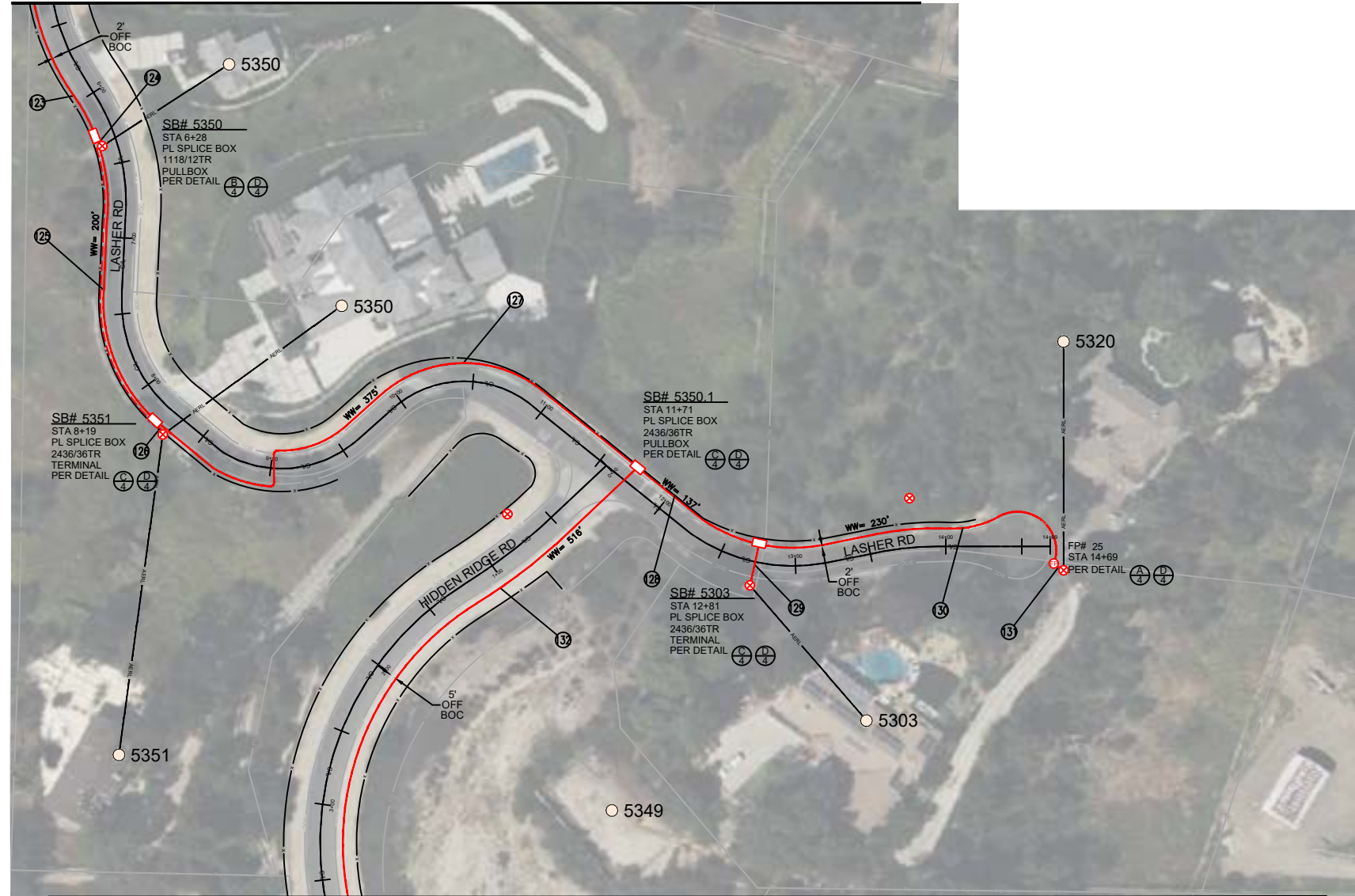
- (117) SB#24051 37+17 TO SB#24127 40+55 PL'D ON DWG#11 (3) 1.25" SDR11 PER DETAIL (A/3)
- (118) SB#24127 40+55 TO FP#23 40+55 PLACE 55' (2) 1.25" SDR11 PER DETAIL (A/3) (J/3)
- (119) SB#24127 40+55 TO SB#24153 43+77 PLACE 320' (3) 1.25" SDR11 PER DETAIL (A/3)
- (120) SB#24153 43+77 TO FP#24 43+77 PLACE 55' (2) 1.25" SDR11 PER DETAIL (A/3) (J/3)
- (121) SB#24153 43+77 TO TIC MARK 45+77 PLACE 200' (5) 1.25" SDR11 PER DETAIL (A/3) (J/3)
- (122) TIC MARK 45+77 TO SB#24162 4+24 PLACE 455' (2) 1.25" SDR11 PER DETAIL (A/3) (J/3)
- (123) SB#24162 4+24 TO SB#5350 6+28 PLACE 230' (2) 1.25" SDR11 PER DETAIL (A/3) (J/3)
- (140) TIC MARK 45+77 TO SB#24221 47+49 PLACE 178' (3) 1.25" SDR11 PER DETAIL (A/3) (J/3)
- (141) SB#24221 47+49 TO SB#24220 47+49 PLACE 60' (2) 1.25" SDR11 PER DETAIL (A/3) (J/3)
- (142) SB#24220 47+49 TO FP#28 48+66 PLACE 115' (2) 1.25" SDR11 PER DETAIL (A/3)
- (143) SB#24221 47+49 TO SB#24307 51+08 PLACE 360' (3) 1.25" SDR11 PER DETAIL (A/3) (J/3)
- (144) SB#24307 51+08 TO FP#29 51+08 PLACE 55' (2) 1.25" SDR11 PER DETAIL (A/3) (J/3)
- (145) SB#24307 51+08 TO SB#24314 52+02 PLACE 135' (2) 1.25" SDR11 PER DETAIL (A/3)

FROM SB#24051 SEE DWG#11

TO SB#5350  
SEE DWG#14

	JOB NO. <u>HIDDEN HILLS - PHASE 2</u>	SUBJECT <b>TRENCH ALIGNMENT</b>	VERSION 09/07/2023		<b>SHEET INDEX</b> DWG 1 - COVER PAGE DWG 2 - BILL OF MATERIALS DWG 3 - TYPICAL CONST. DETAILS DWG 4 - TYPICAL BOX DETAILS DWG 5 TO 19 - CONDUIT DESIGN
	LOCATION <u>HIDDEN HILLS, CA</u>	TYPE OF CONST <b>DUCT PLACEMENT</b>	0  200'		
ENGR <u>JOY PADILLA</u>	TEL <u>909-457-8448</u>	DWG <u>13</u> OF <u>19</u>			
844-994-4448					

FROM SB#24162  
SEE DWG#13



TO SB#5349  
SEE DWG#15

**PLACEMENT NOTES:**

- 123 SB#24162 4+24 TO  
SB#5350 6+28  
PL'D ON DWG#13  
Ø 1.25" SDR11  
PER DETAIL (A/3) (J/3)
- 124 SB#5350 6+28 TO  
RISER POLE  
PLACE 10'  
(1) 1.25" SDR11  
PER DETAIL (A/3) (K/3)
- 125 SB#5350 6+28 TO  
SB#5351 8+19  
PLACE 200'  
Ø 1.25" SDR11  
PER DETAIL (A/3)
- 126 SB#5351 8+19 TO  
RISER POLE  
PLACE 10'  
Ø 1.25" SDR11  
PER DETAIL (A/3) (K/3)
- 127 SB#5351 8+19 TO  
SB#5350 11+71  
PLACE 375'  
Ø 1.25" SDR11  
PER DETAIL (A/3) (J/3)
- 128 SB#5350 11+71 TO  
SB#5303 12+81  
PLACE 137'  
Ø 1.25" SDR11  
PER DETAIL (A/3) (J/3)
- 129 SB#5303 12+81 TO  
RISER POLE  
PLACE 30'  
(1) 1.25" SDR11  
PER DETAIL (J/3) (K/3)
- 130 SB#5303 12+81 TO  
FP#25 14+69  
PLACE 230'  
Ø 1.25" SDR11  
PER DETAIL (A/3)
- 131 FP#25 14+69 TO  
RISER POLE  
PLACE 10'  
(1) 1.25" SDR11  
PER DETAIL (A/3) (K/3)
- 132 SB#5350 11+71 TO  
SB#5349 5+20  
PLACE 516'  
Ø 1.25" SDR11  
PER DETAIL (A/3) (J/3)



844-994-4448

JOB NO. HIDDEN HILLS - PHASE 2

LOCATION HIDDEN HILLS, CA

ENGR JOY PADILLA

TEL 909-457-8448

SUBJECT

**TRENCH ALIGNMENT**

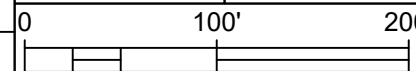
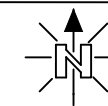
TYPE OF CONST

**DUCT PLACEMENT**

DWG 14 OF 19

VERSION

09/07/2023



**SHEET INDEX**

- DWG 1 - COVER PAGE
- DWG 2 - BILL OF MATERIALS
- DWG 3 - TYPICAL CONST. DETAILS
- DWG 4 - TYPICAL BOX DETAILS
- DWG 5 TO 19 - CONDUIT DESIGN

FROM SB#5350  
SEE DWG#14



**PLACEMENT NOTES:**

- 132 SB#5350 11+71 TO  
SB#5349 5+20  
PL'D ON DWG#14  
Ø 1.25" SDR11  
PER DETAIL (A/3) (J/3)
- 133 SB#5349 5+20 TO  
FP#26 5+20  
PLACE 40'  
Ø 1.25" SDR11  
PER DETAIL (A/3) (J/3)
- 134 SB#5349 5+20 TO  
SB#24155 6+97  
PLACE 150'  
Ø 1.25" SDR11  
PER DETAIL (A/3)
- 135 SB#24155 6+79 TO  
SB#24105 8+80  
PLACE 195'  
Ø 1.25" SDR11  
PER DETAIL (A/3)
- 136 SB#24105 8+80 TO  
FP#27 8+80  
PLACE 40'  
Ø 1.25" SDR11  
PER DETAIL (A/3) (J/3)
- 137 SB#24105 8+80 TO  
SB#24025 11+52  
PLACE 283'  
Ø 1.25" SDR11  
PER DETAIL (A/3)
- 138 SB#24025 11+52  
SB#24025 12+58  
PLACE 115'  
Ø 1.25" SDR11  
PER DETAIL (A/3)
- 139 SB#24025 12+58 TO  
SB#24050 12+78  
PLACE 90'  
Ø 1.25" SDR11  
PER DETAIL (A/3)



844-994-4448

JOB NO. HIDDEN HILLS - PHASE 2

LOCATION HIDDEN HILLS, CA

ENGR JOY PADILLA

TEL 909-457-8448

SUBJECT

**TRENCH ALIGNMENT**

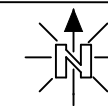
TYPE OF CONST

**DUCT PLACEMENT**

DWG 15 OF 19

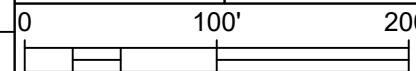
VERSION

09/07/2023



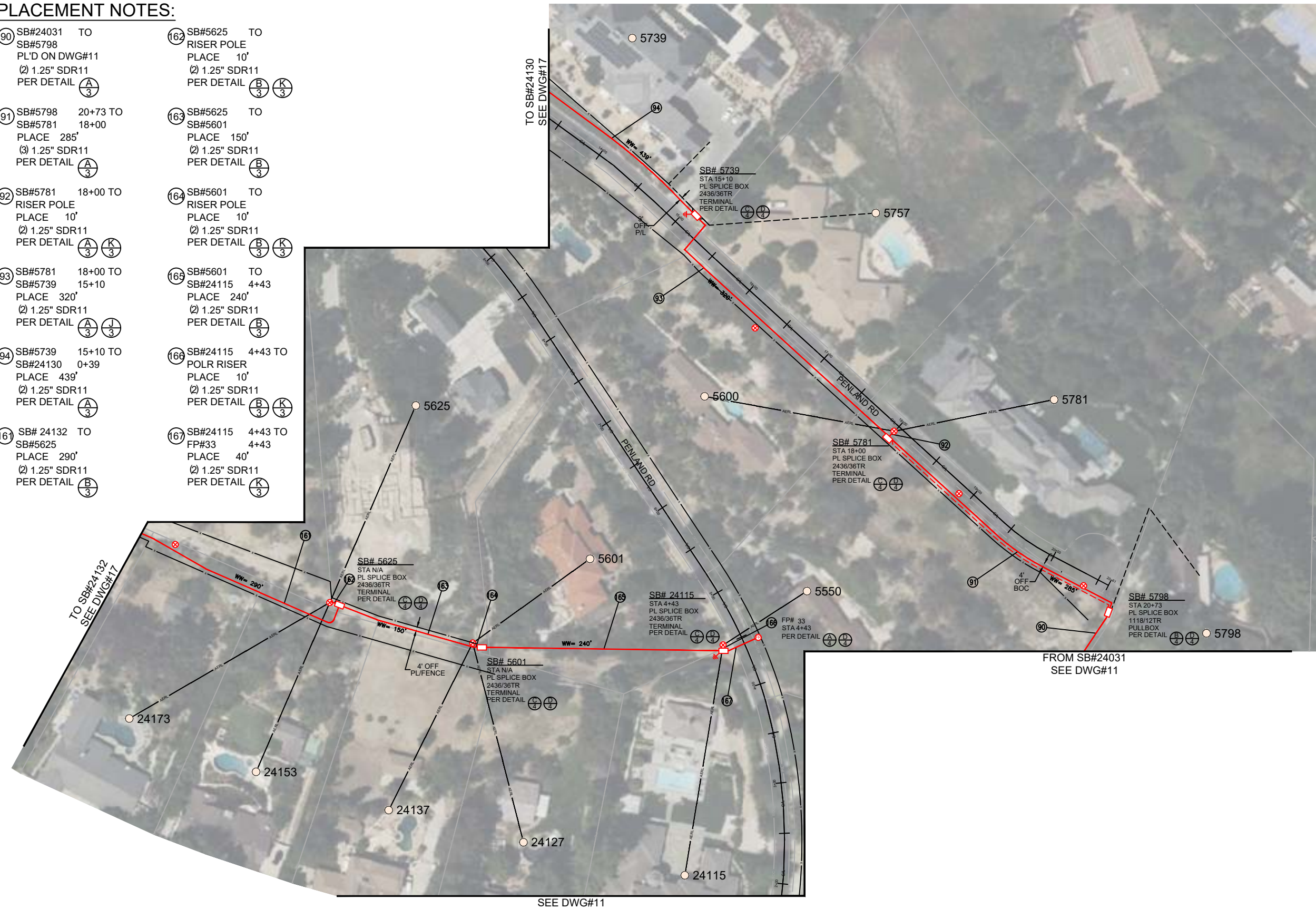
**SHEET INDEX**

- DWG 1 - COVER PAGE
- DWG 2 - BILL OF MATERIALS
- DWG 3 - TYPICAL CONST. DETAILS
- DWG 4 - TYPICAL BOX DETAILS
- DWG 5 TO 19 - CONDUIT DESIGN



**PLACEMENT NOTES:**

- 90 SB#24031 TO SB#5798  
PL'D ON DWG#11  
Ø 1.25" SDR11  
PER DETAIL (A/3)
- 91 SB#5798 20+73 TO SB#5781 18+00  
PLACE 285'  
Ø 1.25" SDR11  
PER DETAIL (A/3)
- 92 SB#5781 18+00 TO RISER POLE  
PLACE 10'  
Ø 1.25" SDR11  
PER DETAIL (A/3) (K/3)
- 93 SB#5781 18+00 TO SB#5739 15+10  
PLACE 320'  
Ø 1.25" SDR11  
PER DETAIL (A/3) (J/3)
- 94 SB#5739 15+10 TO SB#24130 0+39  
PLACE 439'  
Ø 1.25" SDR11  
PER DETAIL (A/3)
- 167 SB# 24132 TO SB#5625  
PLACE 290'  
Ø 1.25" SDR11  
PER DETAIL (B/3)
- 162 SB#5625 TO RISER POLE  
PLACE 10'  
Ø 1.25" SDR11  
PER DETAIL (B/3) (K/3)
- 163 SB#5625 TO SB#5601  
PLACE 150'  
Ø 1.25" SDR11  
PER DETAIL (B/3)
- 164 SB#5601 TO RISER POLE  
PLACE 10'  
Ø 1.25" SDR11  
PER DETAIL (B/3) (K/3)
- 165 SB#5601 TO SB#24115 4+43  
PLACE 240'  
Ø 1.25" SDR11  
PER DETAIL (B/3)
- 166 SB#24115 4+43 TO POLR RISER  
PLACE 10'  
Ø 1.25" SDR11  
PER DETAIL (B/3) (K/3)
- 167 SB#24115 4+43 TO FP#33 4+43  
PLACE 40'  
Ø 1.25" SDR11  
PER DETAIL (K/3)



	JOB NO. <u>HIDDEN HILLS - PHASE 2</u>	SUBJECT <b>TRENCH ALIGNMENT</b>	VERSION 09/07/2023		<b>SHEET INDEX</b> DWG 1 - COVER PAGE DWG 2 - BILL OF MATERIALS DWG 3 - TYPICAL CONST. DETAILS DWG 4 - TYPICAL BOX DETAILS DWG 5 TO 19 - CONDUIT DESIGN
	LOCATION <u>HIDDEN HILLS, CA</u>	TYPE OF CONST <b>DUCT PLACEMENT</b>			
ENGR <u>JOY PADILLA</u>	TEL <u>909-457-8448</u>	DWG <u>16</u> OF <u>19</u>			



TO SB#24173  
SEE DWG#18



**PLACEMENT NOTES:**

- 94 SB#5739 15+10 TO SB#24130 0+39 PL'D ON DWG#16 (2) 1.25" SDR11 PER DETAIL (A/3)
- 95 SB#24130 0+39 TO RISER POLE PLACE 10' (2) 1.25" SDR11 PER DETAIL (A/3) (K/3)
- 96 SB#24130 0+39 TO FP#15 11+22 PLACE 60' (2) 1.25" SDR11 PER DETAIL (A/3) (J/3)
- 97 SB#24130 0+39 TO SB#24130.1 3+52 PLACE 314' (2) 1.25" SDR11 PER DETAIL (A/3)
- 98 SB#24130.1 3+52 TO RISER POLE PLACE 10' (1) 1.25" SDR11 PER DETAIL (A/3) (K/3)
- 99 SB#24130.1 3+52 TO FP#16 3+52 PLACE 40' (2) 1.25" SDR11 PER DETAIL (A/3) (J/3)
- 100 SB#24130.1 3+52 TO SB#24140 4+00 PLACE 50' (3) 1.25" SDR11 PER DETAIL (A/3)
- 101 SB#24140 4+00 TO FP#17 PLACE 250' (2) 1.25" SDR11 PER DETAIL (A/3) (J/3)
- 102 SB#24140 4+00 TO FP#18 4+92 PLACE 115' (2) 1.25" SDR11 PER DETAIL (A/3) (J/3)
- 103 FP#18 4+92 TO RISER POLE PLACE 10' (1) 1.25" SDR11 (2) 1.25" SDR11 PER DETAIL (A/3) (K/3)
- 104 SB#24140 4+00 TO SB#24173 7+16 PLACE 310' (2) 1.25" SDR11 PER DETAIL (A/3)
- 153 FP#32 2+92 TO SB#24333 PLACE 380' (2) 1.25" SDR11 PER DETAIL (B/3)
- 154 SB#24333 TO RISER POLE PLACE 20' (2) 1.25" SDR11 PER DETAIL (B/3) (K/3)
- 155 SB#24333 TO SB#24243 PLACE 350' (2) 1.25" SDR11 PER DETAIL (B/3)
- 156 SB#24243 TO RISER POLE PLACE 10' (2) 1.25" SDR11 PER DETAIL (B/3) (K/3)
- 157 SB#24243 TO SB#24255 PLACE 110' (2) 1.25" SDR11 PER DETAIL (B/3)
- 158 SB#24255 TO RISER POLE PLACE 10' (2) 1.25" SDR11 PER DETAIL (B/3) (K/3)
- 159 SB#24255 TO SB#24132 PLACE 115' (3) 1.25" SDR11 PER DETAIL (B/3)
- 160 SB#24132 TO RISER POLE PLACE 10' (1) 1.25" SDR11 PER DETAIL (B/3) (K/3)
- 161 SB# 24132 TO SB#5625 PL'D ON DWG#16 (2) 1.25" SDR11 PER DETAIL (B/3)

TO FP#32  
SEE DWG#18

FROM SB#24130  
SEE DWG#16

FROM SB#5625  
SEE DWG#16



JOB NO. HIDDEN HILLS - PHASE 2  
 LOCATION HIDDEN HILLS, CA  
 ENGR JOY PADILLA TEL 909-457-8448

SUBJECT  
**TRENCH ALIGNMENT**

TYPE OF CONST  
**DUCT PLACEMENT**

DWG 17 OF 19

VERSION  
09/07/2023

**SHEET INDEX**

DWG 1 - COVER PAGE
DWG 2 - BILL OF MATERIALS
DWG 3 - TYPICAL CONST. DETAILS
DWG 4 - TYPICAL BOX DETAILS
DWG 5 TO 19 - CONDUIT DESIGN

**EXISTING CONDUIT:**

- (A) SB#24314 STA 52+02 TO SB#24355 STA 55+75  
EXIST 411'  
(2) 2" CONDUIT
- (B) SB#24355 STA 55+75 TO SB#5701 STA 57+62  
EXIST 210'  
(1) 2" CONDUIT
- (C) SB#5701 STA 57+62 TO SB#24355 STA 2+46  
EXIST 346'  
(1) 2" CONDUIT
- (D) SB#5701 STA 57+62 TO SB#24350  
EXIST 120'  
(1) 2" CONDUIT
- (E) SB#5701 STA 57+62 TO SB#5753 STA 58+64  
EXIST 114'  
(1) 2" CONDUIT
- (F) SB#5753 STA 58+64 TO SB#5809 STA 60+65  
EXIST 220'  
(1) 2" CONDUIT

**PLACEMENT NOTES:**

- (104) SB#24140 4+00 TO SB#24173 7+16  
PL'D ON DWG#17  
(2) 1.25" SDR11  
PER DETAIL (A/3)
- (105) SB#24173 7+16 TO FP#19 7+16  
PLACE 40'  
(2) 1.25" SDR11  
PER DETAIL (A/3) (J/3)
- (106) FP#19 7+16 TO RISER POLE  
PLACE 10'  
(2) 1.25" SDR11  
PER DETAIL (A/3) (K/3)
- (107) SB#24173 7+16 TO FP#20 7+88  
PLACE 72'  
(2) 1.25" SDR11  
PER DETAIL (A/3)
- (145) SB#24307 51+08 TO SB#24314 52+02  
PL'D ON DWG#13  
(2) 1.25" SDR11  
PER DETAIL (A/3)
- (146) SB#24355 55+75 TO FP#30 55+06  
PLACE 120'  
(2) 1.25" SDR11  
PER DETAIL (A/3) (J/3)



**LITTLE HALLOW NOTES:**

- CALLOUTS 147, & 176-178 SHOULD BE COMPLETED AS PART OF THE LITTLE HALLOW UNDERGROUND PROJECT
- SB#24408, SB#24406, SB#24402 & FP#36 SHOULD BE COMPLETED AS PART OF THE LITTLE HALLOW UNDERGROUND PROJECT

**SPliceBOX NOTES:**  
SB#24355 AND SB#5753 WILL REQUIRE REMOVE AND REPLACE

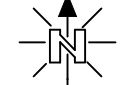
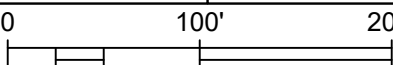
**PLACEMENT NOTES:**

- (147) SB#24350 (EXISTING) TO SB#24408  
PLACE 263'  
(2) 1.25" SDR11  
PER DETAIL (A/3) (J/3)
- (148) FP#31 2+17 TO RISER POLE  
PLACE 10'  
(2) 1.25" SDR11  
PER DETAIL (A/3) (K/3)
- (149) FP#31 2+17 TO SB#24355.1 2+46 (EXISTING)  
PLACE 35'  
(2) 1.25" SDR11  
PER DETAIL (A/3)
- (150) SB#24355.1 2+46 (EXISTING) TO SB#5742 2+92  
PLACE 70'  
(2) 1.25" SDR11  
PER DETAIL (A/3) (J/3)
- (151) SB#5742 2+92 TO FP#32 2+92  
PLACE 40'  
(2) 1.25" SDR11  
PER DETAIL (A/3) (J/3)
- (152) FP#32 2+92 TO RISER POLE  
PLACE 10'  
(2) 1.25" SDR11  
PER DETAIL (A/3) (K/3)
- (153) FP#32 2+92 TO SB#24333  
PL'D ON DWG#17  
(2) 1.25" SDR11  
PER DETAIL (B/3)
- (160) SB#5742 2+92 TO SB#5762 5+93  
PLACE 292'  
(2) 1.25" SDR11  
PER DETAIL (A/3)
- (176) SB#24408 TO SB#24406  
PLACE 115'  
(2) 1.25" SDR11  
PER DETAIL (A/3)
- (177) SB#24408 TO FP#36  
PLACE 75'  
(2) 1.25" SDR11  
PER DETAIL (A/3)
- (178) SB#24406 TO SB#24402  
PLACE 180'  
(2) 1.25" SDR11  
PER DETAIL (A/3)



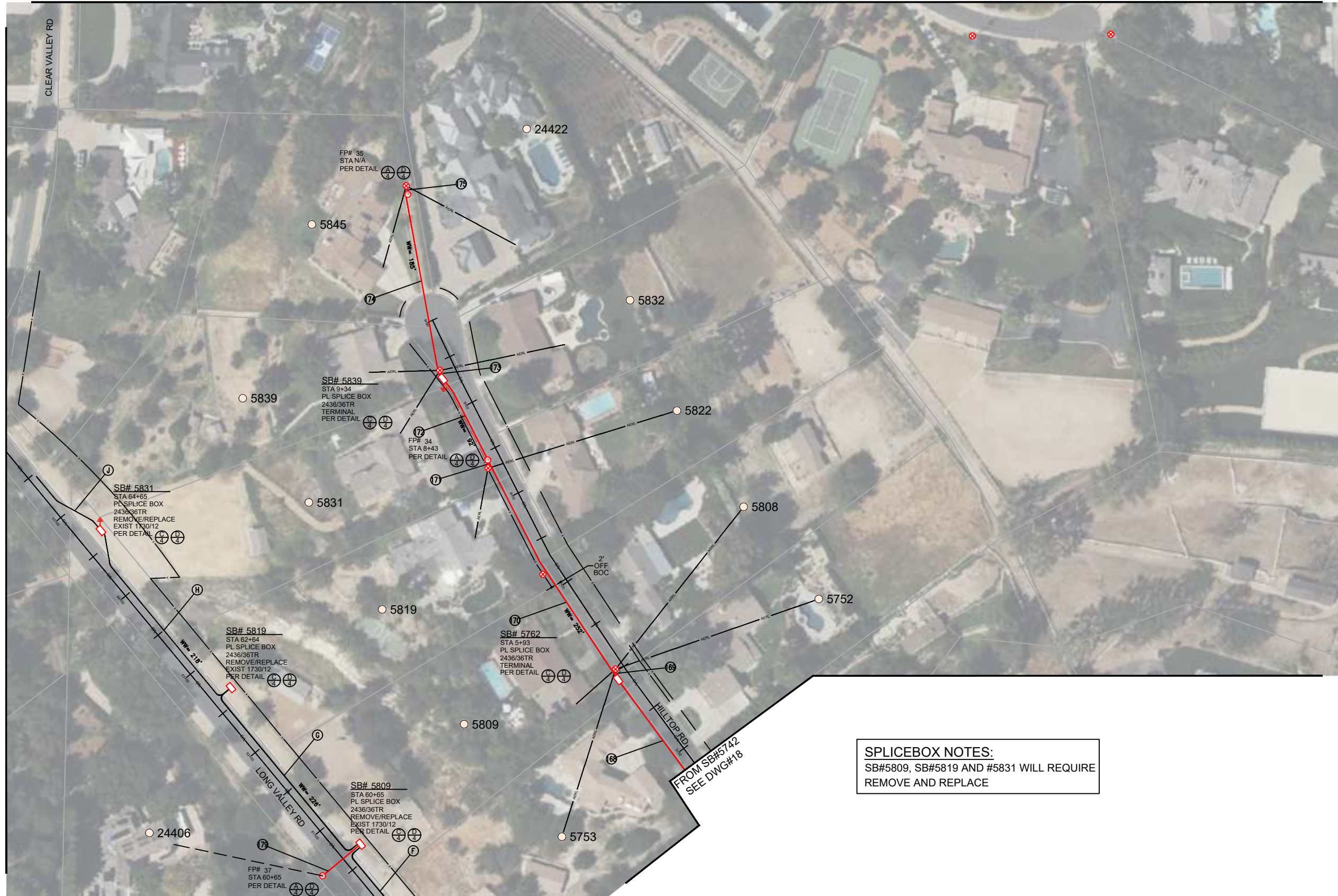
JOB NO. HIDDEN HILLS - PHASE 2  
 LOCATION HIDDEN HILLS, CA  
 ENGR JOY PADILLA TEL 909-457-8448

SUBJECT TRENCH ALIGNMENT  
 TYPE OF CONST DUCT PLACEMENT  
 DWG 18 OF 19

VERSION 09/07/2023  
  


**SHEET INDEX**  
 DWG 1 - COVER PAGE  
 DWG 2 - BILL OF MATERIALS  
 DWG 3 - TYPICAL CONST. DETAILS  
 DWG 4 - TYPICAL BOX DETAILS  
 DWG 5 TO 19 - CONDUIT DESIGN

SEE PHASE 3



**PLACEMENT NOTES:**

- 168 SB#5742 2+92 TO SB#5809 60+65 TO  
SB#5762 5+93 FP#37 60+65  
PL'D ON DWG#18 PLACE 50'  
Ø 1.25" SDR11 Ø 1.25" SDR11  
PER DETAIL (A/3) PER DETAIL (A/3) (J/3)
- 169 SB#5762 5+93 TO  
RISER POLE  
PLACE 10'  
Ø 1.25" SDR11  
PER DETAIL (A/3) (K/3)
- 170 SB#5762 5+93 TO  
FP#34 8+43  
PLACE 252'  
Ø 1.25" SDR11  
PER DETAIL (A/3)
- 171 FP#34 8+43 TO  
RISER POLE  
PLACE 10'  
Ø 1.25" SDR11  
PER DETAIL (A/3) (K/3)
- 172 FP#34 8+43 TO  
SB#5839 9+34  
PLACE 92'  
Ø 1.25" SDR11  
PER DETAIL (A/3) (J/3)
- 173 SB#5839 9+34 TO  
RISER POLE  
PLACE 10'  
Ø 1.25" SDR11  
PER DETAIL (A/3) (K/3)
- 174 SB#5839 9+34 TO  
FP#35  
PLACE 185'  
Ø 1.25" SDR11  
PER DETAIL (A/3)
- 175 FP#35 TO  
RISER POLE  
PLACE 10'  
Ø 1.25" SDR11  
PER DETAIL (A/3) (K/3)

**EXISTING CONDUIT:**

- (F) SB#5753 STA 58+64 TO  
SB#5809 STA 60+65  
EXIST 220'  
(1) 2" CONDUIT
- (G) SB#5809 STA 60+65 TO  
SB#5819 STA 62+64  
EXIST 226'  
(1) 2" CONDUIT
- (H) SB#5819 STA 62+64  
SB#5831 STA 64+65  
EXIST 218'  
(1) 2" CONDUIT
- (J) SB#5831 STA 64+65 TO  
EDGE OF PHASE 2  
EXIST 85'  
(1) 2" CONDUIT

**SPLICEBOX NOTES:**  
SB#5809, SB#5819 AND #5831 WILL REQUIRE  
REMOVE AND REPLACE

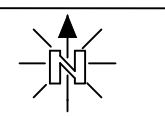
SEE PHASE 3



JOB NO. HIDDEN HILLS - PHASE 2  
LOCATION HIDDEN HILLS, CA  
ENGR JOY PADILLA TEL 909-457-8448

SUBJECT TRENCH ALIGNMENT  
TYPE OF CONST DUCT PLACEMENT  
DWG 19 OF 19

VERSION 09/07/2023  
0 100' 200'



**SHEET INDEX**  
DWG 1 - COVER PAGE  
DWG 2 - BILL OF MATERIALS  
DWG 3 - TYPICAL CONST. DETAILS  
DWG 4 - TYPICAL BOX DETAILS  
DWG 5 TO 19 - CONDUIT DESIGN