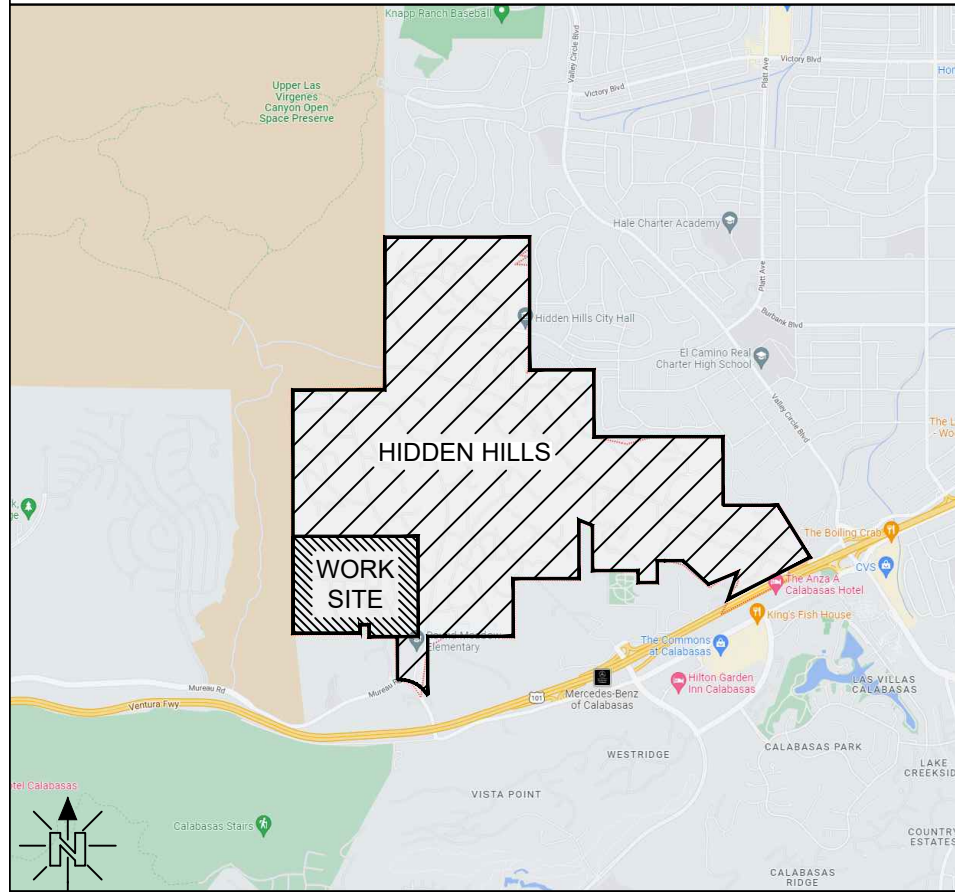


### JOB DESCRIPTION

PHASE 1 OF THIS JOB WILL BE SPLIT INTO TWO PHASES; PH 1A & PH 1B  
 PHASE 1A WILL PLACE 28 STREET CROSSINGS CONSISTING OF (3,408') 1.25" SDR11 CONDUIT & 1,418' OF TRENCHING.  
 PHASE 1B WILL PLACE THE REMAINDER CONSISTING OF (21,760') 1.25" SDR11 CONDUIT, (16) 24X36X36TR, (8) 11X18X12TR, (32) 10X10X18 FLOWER POTS, 14 GROUND BEDS, 7,994' OF TRENCHING & 190' OF BORING TO SERVE 63 SFU.

### VICINITY MAP

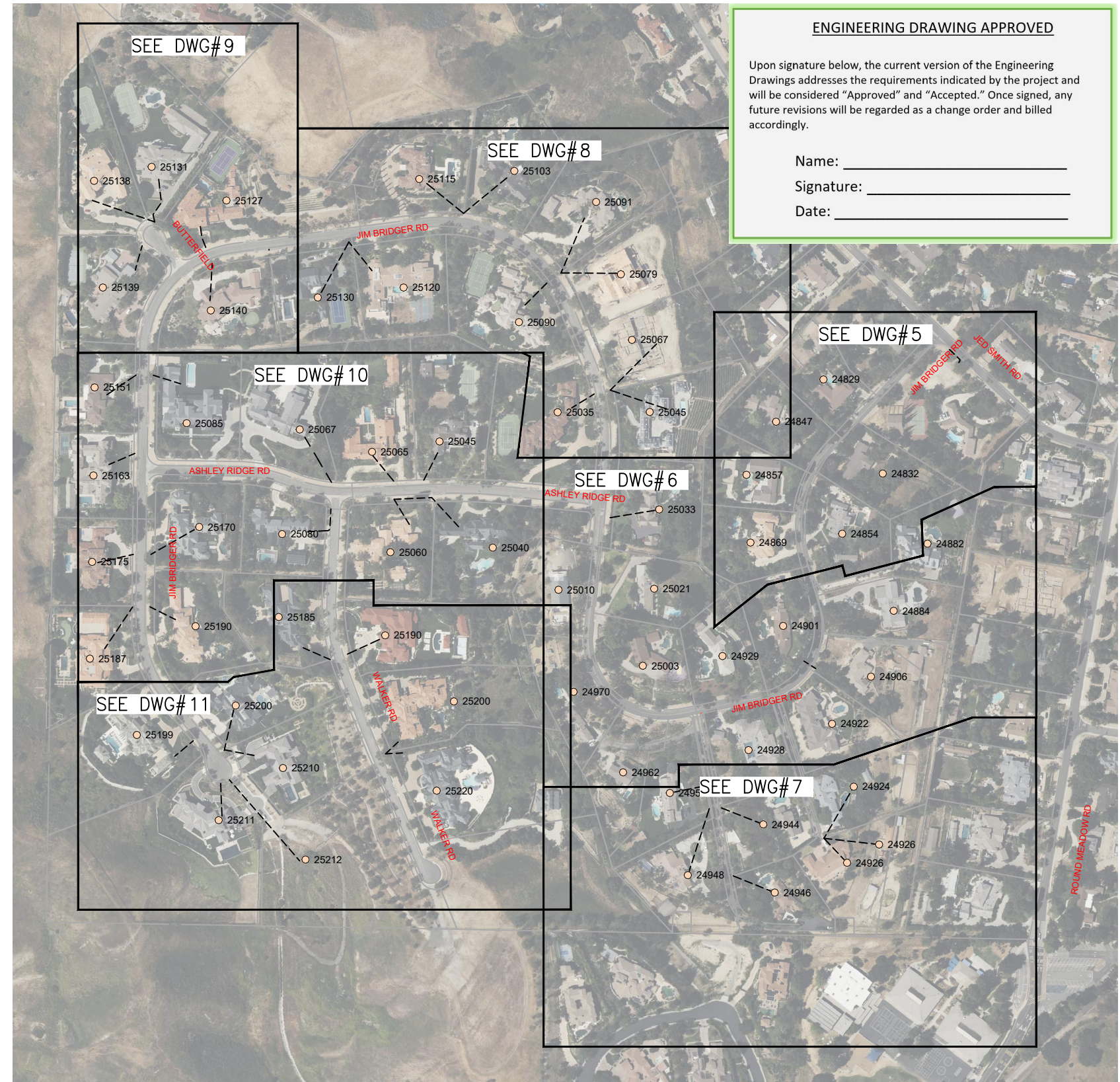
N.T.S.



### LEGEND

TELCO MANHOLE	BORE PIT	FIRE HYDRANT
TELCO VAULT	BRASS CAP	GAS VALVE
TELCO BOX	CATV PED	STREET LIGHT
FLOWER POT	CULVERT	SEWER MANHOLE
TELCO X-BOX	ELEC CABINET	STORM DRAIN
SOLELY OWNED POLE	ELEC MANHOLE	WATER MANHOLE
JOINT POLE	ELEC TRANSFORMER	WATER METER
ANCHOR	ELEC J-BOX	WATER VALVE
BORE	BORE	FENCE LINE
DUCT - NEW	DUCT - NEW	GAS
DUCT - NEW + SERVICE	DUCT - NEW + SERVICE	IRRIGATION
DUCT - EXISTING	DUCT - EXISTING	PROPERTY LINE
DUCT - FUTURE	DUCT - FUTURE	UTILITY EASEMENT
SERVICE - AERIAL	SERVICE - AERIAL	RIGHT OF WAY
ELECTRICAL	ELECTRICAL	SEWER
CABLE TV	CABLE TV	STORM DRAIN
CENTERLINE	CENTERLINE	TELEPHONE
BACK OF CURB	BACK OF CURB	WATER
		x
		G
		IRRG
		P/L
		PUE
		ROW
		S
		SD
		T
		W

### HIDDEN HILLS PHASE 1 (JIM BRIDGER/ASHLEY RIDGE RD) - 63 SFU



#### ENGINEERING DRAWING APPROVED

Upon signature below, the current version of the Engineering Drawings addresses the requirements indicated by the project and will be considered "Approved" and "Accepted." Once signed, any future revisions will be regarded as a change order and billed accordingly.

Name: \_\_\_\_\_

Signature: \_\_\_\_\_

Date: \_\_\_\_\_



**DIGALERT**  
 UNDERGROUND SERVICE ALERT  
 1-800-422-4133 OR 1-800-227-2900  
 CALL USA FOR UNDERGROUND LOCATING  
 2 WORKING DAYS BEFORE YOU DIG



844-994-4448

JOB NO. HIDDEN HILLS - PHASE 1 (JIM BRIDGER/ASHLEY RIDGE)

LOCATION HIDDEN HILLS, CA

ENGR JOY PADILLA TEL 909-457-8448

SUBJECT

**COVER SHEET**

TYPE OF CONST

**DUCT PLACEMENT**

DWG 1 OF 11

VERSION

09/07/2023

#### SHEET INDEX

- DWG 1 - COVER PAGE
- DWG 2 - BILL OF MATERIALS
- DWG 3 - TYPICAL CONST. DETAILS
- DWG 4 - TYPICAL BOX DETAILS
- DWG 5 TO 11 - CONDUIT DESIGN

CONFIDENTIAL AND PROPRIETARY INFORMATION  
 THE INFORMATION CONTAINED HEREIN, IS NOT FOR USE OR  
 DISCLOSURE OUTSIDE INYO NETWORKS, INC. OR THEIR  
 AFFILIATED COMPANIES EXCEPT UNDER WRITTEN AGREEMENT

**BILL OF MATERIALS - PHASE 1A**

CONDUIT (PHASE 1A)				
CALLOUT	QUANTITY	ITEM DESCRIPTION	LENGTH (FT)	TOTAL
1	3	1.25" SDR11 CONDUIT	95	285
3	2	1.25" SDR11 CONDUIT	45	90
7	2	1.25" SDR11 CONDUIT	45	90
9	2	1.25" SDR11 CONDUIT	45	90
11	5	1.25" SDR11 CONDUIT	45	225
17	4	1.25" SDR11 CONDUIT	45	180
20	2	1.25" SDR11 CONDUIT	45	90
23	2	1.25" SDR11 CONDUIT	40	80
25	2	1.25" SDR11 CONDUIT	40	80
27	4	1.25" SDR11 CONDUIT	45	180
30	2	1.25" SDR11 CONDUIT	45	90
33	2	1.25" SDR11 CONDUIT	45	90
34	2	1.25" SDR11 CONDUIT	86	172
38	2	1.25" SDR11 CONDUIT	50	100
40	2	1.25" SDR11 CONDUIT	50	100
42	2	1.25" SDR11 CONDUIT	50	100
44	2	1.25" SDR11 CONDUIT	50	100
46	4	1.25" SDR11 CONDUIT	50	200
50	2	1.25" SDR11 CONDUIT	50	100
52	2	1.25" SDR11 CONDUIT	50	100
53	2	1.25" SDR11 CONDUIT	80	160
55	2	1.25" SDR11 CONDUIT	50	100
57	2	1.25" SDR11 CONDUIT	50	100
60	2	1.25" SDR11 CONDUIT	45	90
63	2	1.25" SDR11 CONDUIT	50	100
65	3	1.25" SDR11 CONDUIT	72	216
70	2	1.25" SDR11 CONDUIT	50	100

**BOXES (PHASE 1A)**

CALLOUT	ITEM DESCRIPTION	STATION - DWG#
THERE ARE NO BOXES PLACED AS PART OF PHASE 1A		
ALL BOXES WILL BE PLACED ON PHASE 1B		

**SUMMARY**

QUANTITY	ITEM DESCRIPTION
3408	1.25" SDR11 CONDUIT
0	24X36X36TR (@ GRADE)
0	11X18X12TR (@ GRADE)
0	10X10X18 FLOWER POT (@ GRADE)
1413	TRENCHING (FT)
0	BORING (FT)
0	GROUNDING (EACH)

**REMARKS/NOTES**

COMPLETED 05/04/2023  
MARKERS ON ENDS

**BILL OF MATERIALS - PHASE 1B**

CONDUIT (PHASE 1B)				
CALLOUT	QUANTITY	ITEM DESCRIPTION	LENGTH (FT)	TOTAL
2	2	1.25" SDR11 CONDUIT	380	760
4	2	1.25" SDR11 CONDUIT	10	20
5	5	1.25" SDR11 CONDUIT	260	1300
6	2	1.25" SDR11 CONDUIT	10	20
8	2	1.25" SDR11 CONDUIT	230	460
10	4	1.25" SDR11 CONDUIT	190	760
12	2	1.25" SDR11 CONDUIT	10	20
13	2	1.25" SDR11 CONDUIT	120	240
15	2	1.25" SDR11 CONDUIT	230	460
16	3	1.25" SDR11 CONDUIT	190	570
18	2	1.25" SDR11 CONDUIT	10	20
19	2	1.25" SDR11 CONDUIT	178	356
21	2	1.25" SDR11 CONDUIT	10	20
22	2	1.25" SDR11 CONDUIT	195	390
24	3	1.25" SDR11 CONDUIT	61	183
26	2	1.25" SDR11 CONDUIT	190	380
28	2	1.25" SDR11 CONDUIT	10	20
29	2	1.25" SDR11 CONDUIT	465	930
31	2	1.25" SDR11 CONDUIT	10	20
32	4	1.25" SDR11 CONDUIT	280	1120
35	2	1.25" SDR11 CONDUIT	50	100
36	2	1.25" SDR11 CONDUIT	460	920
37	2	1.25" SDR11 CONDUIT	230	460
39	5	1.25" SDR11 CONDUIT	325	1625
41	2	1.25" SDR11 CONDUIT	290	580
43	4	1.25" SDR11 CONDUIT	312	1248
45	2	1.25" SDR11 CONDUIT	385	770
47	3	1.25" SDR11 CONDUIT	193	579
48	1	1.25" SDR11 CONDUIT	80	80
49	2	1.25" SDR11 CONDUIT	313	626
51	3	1.25" SDR11 CONDUIT	220	660
54	2	1.25" SDR11 CONDUIT	200	400
56	4	1.25" SDR11 CONDUIT	150	600
58	2	1.25" SDR11 CONDUIT	392	784
59	4	1.25" SDR11 CONDUIT	73	292
61	2	1.25" SDR11 CONDUIT	75	150
62	3	1.25" SDR11 CONDUIT	87	261
64	4	1.25" SDR11 CONDUIT	175	700
66	2	1.25" SDR11 CONDUIT	65	130
67	2	1.25" SDR11 CONDUIT	358	716
68	2	1.25" SDR11 CONDUIT	50	100
69	4	1.25" SDR11 CONDUIT	303	1212
71	2	1.25" SDR11 CONDUIT	359	718


FLOWER POTS (PHASE 1B)		
CALLOUT	ITEM DESCRIPTION	STATION - DWG#
FP#2	10X10X18 FLOWER POT (@ GRADE)	STA 3+79 - DWG#5
FP#3	10X10X18 FLOWER POT (@ GRADE)	STA 6+26 - DWG#5
FP#4	10X10X18 FLOWER POT (@ GRADE)	STA 11+45 - DWG#6
FP#5	10X10X18 FLOWER POT (@ GRADE)	STA 2+28 - DWG#7
FP#6	10X10X18 FLOWER POT (@ GRADE)	STA NA - DWG#7
FP#7	10X10X18 FLOWER POT (@ GRADE)	STA 13+52 - DWG#6
FP#8	10X10X18 FLOWER POT (@ GRADE)	STA 2+04 - DWG#7
FP#9	10X10X18 FLOWER POT (@ GRADE)	STA 2+04 - DWG#7
FP#10	10X10X18 FLOWER POT (@ GRADE)	STA 2+65 - DWG#7
FP#11	10X10X18 FLOWER POT (@ GRADE)	STA 4+55 - DWG#7
FP#12	10X10X18 FLOWER POT (@ GRADE)	STA 14+00 - DWG#6
FP#13	10X10X18 FLOWER POT (@ GRADE)	STA 18+45 - DWG#6
FP#14	10X10X18 FLOWER POT (@ GRADE)	STA 21+06 - DWG#6
FP#15	10X10X18 FLOWER POT (@ GRADE)	STA 24+44 - DWG#8
FP#16	10X10X18 FLOWER POT (@ GRADE)	STA 27+75 - DWG#8
FP#17	10X10X18 FLOWER POT (@ GRADE)	STA 30+69 - DWG#8
FP#18	10X10X18 FLOWER POT (@ GRADE)	STA 33+77 - DWG#8
FP#19	10X10X18 FLOWER POT (@ GRADE)	STA 37+55 - DWG#9
FP#20	10X10X18 FLOWER POT (@ GRADE)	STA 1+20 - DWG#9
FP#21	10X10X18 FLOWER POT (@ GRADE)	STA 41+48 - DWG#10
FP#22	10X10X18 FLOWER POT (@ GRADE)	STA 43+58 - DWG#10
FP#23	10X10X18 FLOWER POT (@ GRADE)	STA 46+30 - DWG#10
FP#24	10X10X18 FLOWER POT (@ GRADE)	STA 47+72 - DWG#10
FP#25	10X10X18 FLOWER POT (@ GRADE)	STA 47+72 - DWG#10
FP#26	10X10X18 FLOWER POT (@ GRADE)	STA 51+64 - DWG#11
FP#27	10X10X18 FLOWER POT (@ GRADE)	STA NA - DWG#11
FP#28	10X10X18 FLOWER POT (@ GRADE)	STA 4+78 - DWG#10
FP#29	10X10X18 FLOWER POT (@ GRADE)	STA 5+58 - DWG#10
FP#30	10X10X18 FLOWER POT (@ GRADE)	STA 1+04 - DWG#10
FP#31	10X10X18 FLOWER POT (@ GRADE)	STA 4+43 - DWG#11
FP#32	10X10X18 FLOWER POT (@ GRADE)	STA 7+30 - DWG#11
FP#33	10X10X18 FLOWER POT (@ GRADE)	STA 10+76 - DWG#11

BOXES (PHASE 1B)		
CALLOUT	ITEM DESCRIPTION	STATION - DWG#
SB#24847	11X18X12TR (@ GRADE)	STA 3+79 - DWG#5
SB#24869	24X36X36TR (@ GRADE)	STA 6+26 - DWG#5
SB#24901	11X18X12TR (@ GRADE)	STA 8+42 - DWG#6
SB#24906	24X36X36TR (@ GRADE)	STA 10+71 - DWG#6
SB#24922	24X36X36TR (@ GRADE)	STA 11+45 - DWG#6
SB#24928	24X36X36TR (@ GRADE)	STA 13+52 - DWG#6
SB#24944	24X36X36TR (@ GRADE)	STA 2+65 - DWG#7
SB#25010	24X36X36TR (@ GRADE)	STA 18+45 - DWG#6
SB#25035.01	11X18X12TR (@ GRADE)	STA 24+44 - DWG#8
SB#25040	24X36X36TR (@ GRADE)	STA 22+14 - DWG#6
SB#25065	24X36X36TR (@ GRADE)	STA 5+58 - DWG#10
SB#25067	11X18X12TR (@ GRADE)	STA 7+27 - DWG#10
SB#25085	24X36X36TR (@ GRADE)	STA 41+48 - DWG#10
SB#25085.01	11X18X12TR (@ GRADE)	STA 43+58 - DWG#10
SB#25090	24X36X36TR (@ GRADE)	STA 27+75 - DWG#8
SB#25120	11X18X12TR (@ GRADE)	STA 30+69 - DWG#8
SB#25130	24X36X36TR (@ GRADE)	STA 33+77 - DWG#8
SB#25131	11X18X12TR (@ GRADE)	STA 1+49 - DWG#9
SB#25140	24X36X36TR (@ GRADE)	STA 37+56 - DWG#9
SB#25170	24X36X36TR (@ GRADE)	STA 46+30 - DWG#10
SB#25185	11X18X12TR (@ GRADE)	STA 4+43 - DWG#11
SB#25210	24X36X36TR (@ GRADE)	STA 52+36 - DWG#11
SB#25220	24X36X36TR (@ GRADE)	STA 7+30 - DWG#11
SB#5373	24X36X36TR (@ GRADE)	STA 0+37 - DWG#5

**SUMMARY**

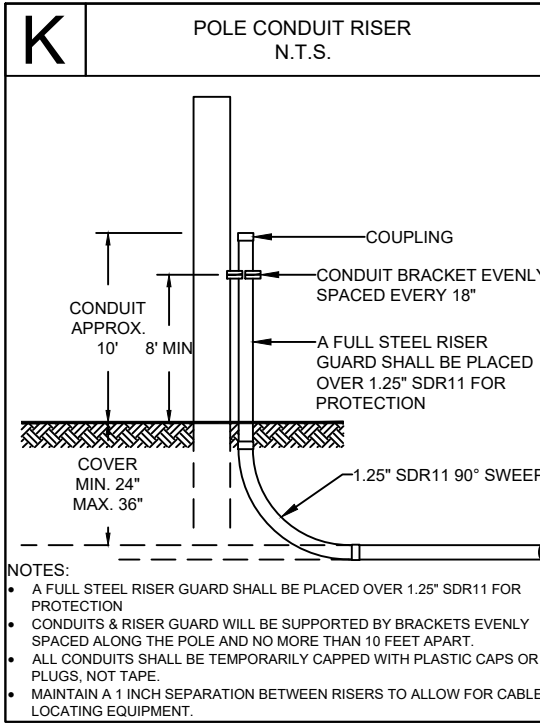
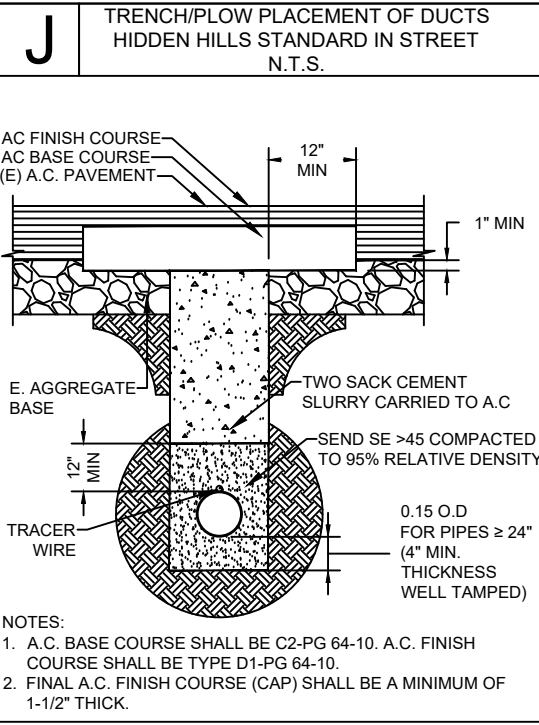
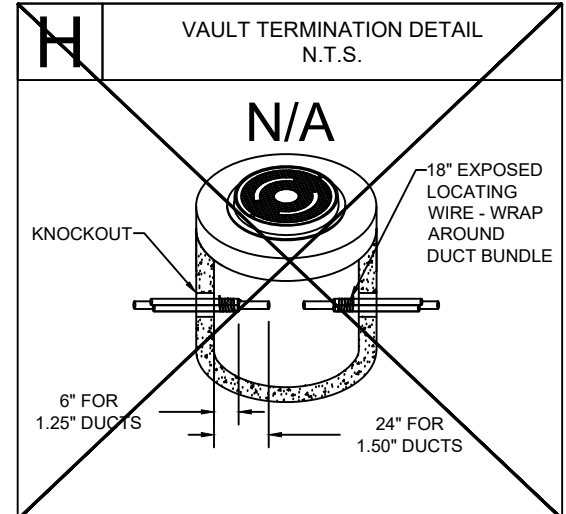
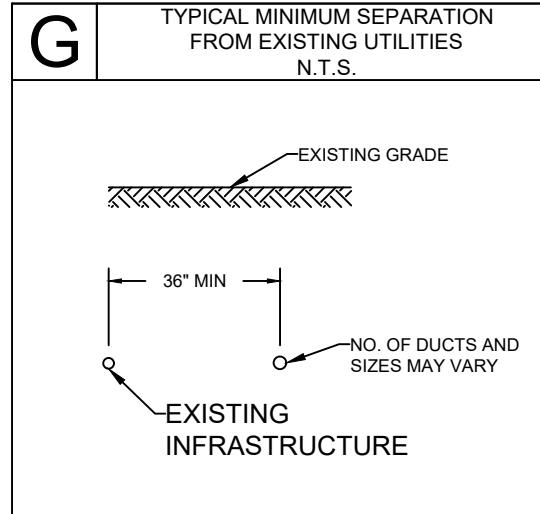
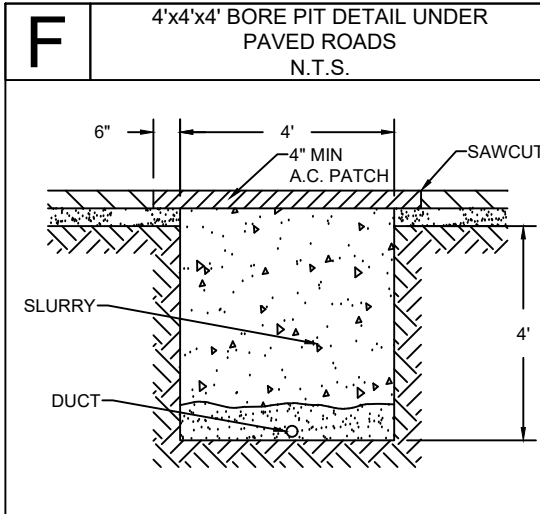
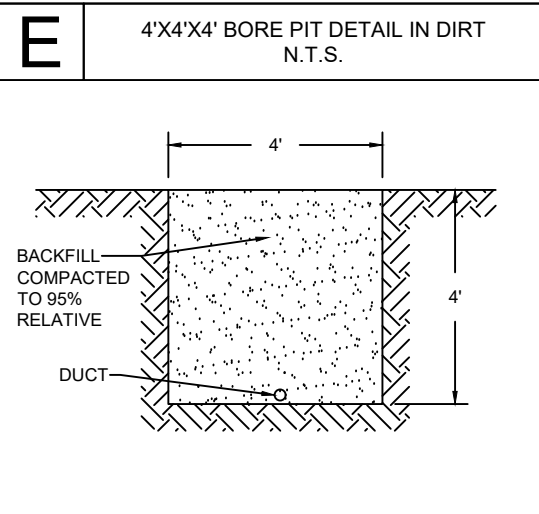
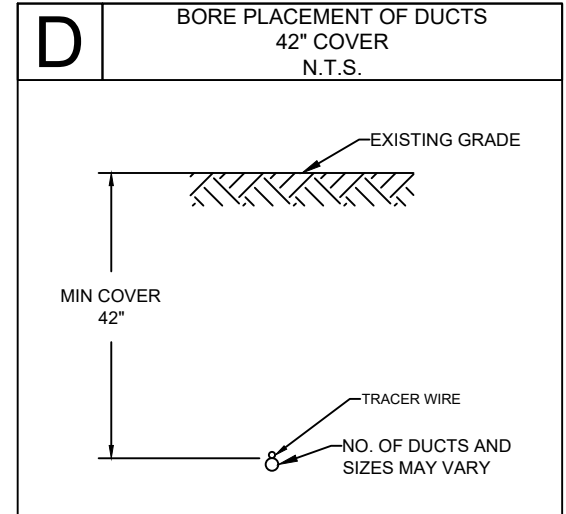
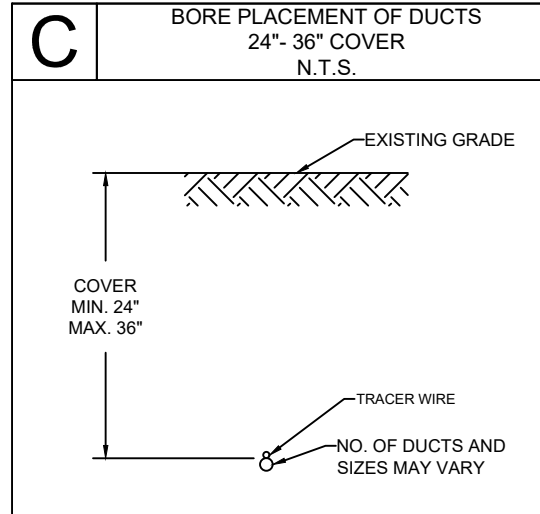
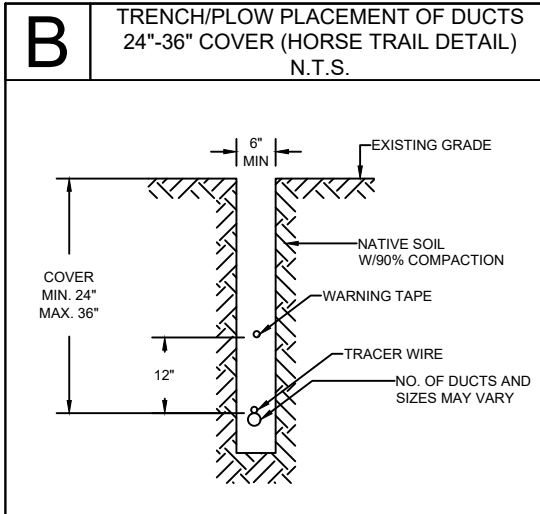
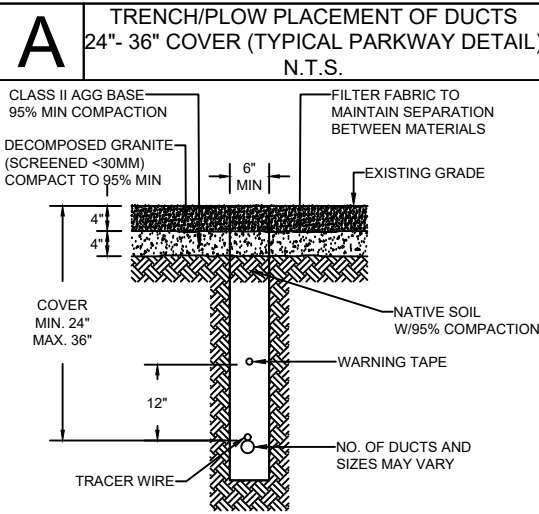
QUANTITY	ITEM DESCRIPTION
21760	1.25" SDR11 CONDUIT
16	24X36X36TR (@ GRADE)
8	11X18X12TR (@ GRADE)
32	10X10X18 FLOWER POT (@ GRADE)
7994	TRENCHING (FT)
190	BORING (FT)
14	GROUNDING (EACH)

**REMARKS/NOTES**

 <p>Get Connected. Get Faster. 844-994-4448</p>	JOB NO. <u>HIDDEN HILLS - PHASE 1 (JIM BRIDGER/ASHLEY RIDGE)</u>	SUBJECT <h2 style="text-align: center;">BILL OF MATERIALS</h2>	VERSION 09/07/2023	<h3 style="text-align: center;">SHEET INDEX</h3> DWG 1 - COVER PAGE DWG 2 - BILL OF MATERIALS DWG 3 - TYPICAL CONST. DETAILS DWG 4 - TYPICAL BOX DETAILS DWG 5 TO 11 - CONDUIT DESIGN
	LOCATION <u>HIDDEN HILLS, CA</u>	TYPE OF CONST <h2 style="text-align: center;">DUCT PLACEMENT</h2>	<small>CONFIDENTIAL AND PROPRIETARY INFORMATION                  THE INFORMATION CONTAINED HEREIN, IS NOT FOR USE OR                  DISCLOSURE OUTSIDE INYO NETWORKS, INC. OR THEIR                  AFFILIATED COMPANIES EXCEPT UNDER WRITTEN AGREEMENT</small>	
	ENGR <u>JOY PADILLA</u>	DWG <u>2</u> OF <u>11</u>		
	TEL <u>909-457-8448</u>			

**CONSTRUCTION NOTES**

- THE LOCATION OF EXISTING UTILITIES ARE FOR REFERENCE AND ARE SHOWN IN THEIR APPROXIMATE LOCATION ONLY. EXACT LOCATIONS MUST BE LOCATED BY UNDERGROUND SERVICE ALERT BEFORE ANY DIGGING.
- THE CONTRACTOR SHALL HAVE A COPY OF THE APPROVED CONSTRUCTION PLANS AND APPROVED TRAFFIC CONTROL PLAN AT THE PROJECT SITE AT ALL TIMES.
- ALL UTILITIES CROSSING EXISTING CITY STREETS MUST BE BORED OR PUNCHED, UNLESS PERMISSION TO OPEN CUT HAS BEEN GIVEN IN WRITING BY THE CITY ENGINEER OR HIS AUTHORIZED REPRESENTATIVE. BEFORE STARTING ANY STREET BORE THAT CROSSES A MAJOR ROADWAY. THE CONTRACTOR MUST SCHEDULE A SEPARATE FIELD MEETING WITH THE PROJECT INSPECTOR TO VERIFY THAT ALL UNDERGROUND SERVICE ALERT AND DESIGN REQUIREMENTS ARE MET.
- THE UTILITY COMPANY SHALL CALL THE ENGINEERING DIVISION 24 HOURS IN ADVANCE OF STARTING WORK GIVING LOCATION AND PERMIT NUMBER IN ORDER TO SCHEDULE INSPECTIONS. STATUS UPDATES SHALL BE MADE WEEKLY.
- ALIGNMENT ON PLANS MAY NOT DEVIATE MORE THAN 1' WITHOUT GETTING THE APPROVAL OF THE GOVERNING AGENCY.
- ALL WORK REQUIRING ASPHALT REPLACEMENT, CONCRETE REPLACEMENT OR RESURFACING IN CITY RIGHT OF WAY WILL REQUIRE A FINAL INSPECTION WITH THE UTILITY COMPANY REPRESENTATIVE AT TIME OF COMPLETION.
- ALL STREET EXCAVATIONS SHALL BE TWO SACK SLURRY BACK FILLED. PAVED STREETS AND DRIVEWAYS SHALL BE REPAVED IN A MANNER THAT MATCHES THE PAVEMENT PRIOR TO CONSTRUCTION. ANY TRENCHES ON PRIVATE PROPERTY DO NOT REQUIRE SLURRY BACKFILL BUT ARE REQUIRED TO COMPACT TO 90%.
- PROTECTIVE DEVICES ARE REQUIRED! THESE PROTECTIVE DEVICES INCLUDE, ORANGE VEST (DAYTIME), REFLECTIVE ORANGE VEST (NIGHTTIME), TRAFFIC CONES, BARRICADES FLASHING LIGHTS, FLARES, AND ANY OTHER TRAFFIC CONTROL DEVICE AS REQUIRED.
- THE CONTRACTOR WILL SUBMIT A TRAFFIC CONTROL PLAN AS PART OF THE CONSTRUCTION PERMIT APPLICATION FOR ACTIVITIES ALONG STATE HIGHWAYS AND COUNTY ROADS. THE PLAN MUST FOLLOW THE RULES AND REGULATIONS OF THE GOVERNING AGENCY AND BE CONSISTENT WITH CONTRACTOR CONSTRUCTION METHODS AND ALL PLANNED ACTIVITIES ALONG STATE HIGHWAY AND COUNTY ROADS.
- THE TRENCH BOTTOM SHALL BE SMOOTH, FLAT, AND WITHOUT SURFACE IRREGULARITIES; OTHERWISE, A SUFFICIENT AMOUNT OF BEDDING MATERIAL SHALL BE INSTALLED TO PROVIDE THE REQUIRED SURFACE. MAINTAIN A MINIMUM OF 36" COVER WITH 6" BACK FILL FREE OF DEBRIS, ROCKS AND CLODS.
- ALL CONDUIT TO HAVE MINIMUM 24" COVER UNLESS OTHERWISE NOTED ON DRAWING SHEETS.
- ROW DEPICTED ON THESE DRAWINGS HAVE NOT BEEN SURVEYED AND ARE REPRESENTED USING AVAILABLE RECORDS AND FIELD ARTIFACTS.



**SPANDREL NOTE:**  
DO NOT CUT ANY SPANDRELS UNLESS ABSOLUTELY REQUIRED. IF POTHOLING IS REQUIRED, RESTORE AREA TO LIKE OR NEW CONDITION



844-994-4448

JOB NO. HIDDEN HILLS - PHASE 1 (JIM BRIDGER/ASHLEY RIDGE)

LOCATION HIDDEN HILLS, CA

ENGR JOY PADILLA

TEL 909-457-8448

SUBJECT

**TYPICAL CONSTRUCTION DETAILS**

TYPE OF CONST

**DUCT PLACEMENT**

DWG 3 OF 11

VERSION

09/07/2023

**SHEET INDEX**

- DWG 1 - COVER PAGE
- DWG 2 - BILL OF MATERIALS
- DWG 3 - TYPICAL CONST. DETAILS
- DWG 4 - TYPICAL BOX DETAILS
- DWG 5 TO 11 - CONDUIT DESIGN

### A 1010/12 FLOWERPOT DETAIL

SKU: 10005049

Compare to: Christy G05T

MARKING OPTION CODES:  
 -00 BLANK  
 -11 WATER  
 -13 SEWER  
 -14 GROUND ROD

Hardware:  
 • Cast Iron Bolt Down Lid HTV10-S-CIL  
 • Bolt down recommended for high traffic areas.  
 • (2) 1/4" x 1" SS Screws (included)  
 • Traffic Valve Box HTV10-S-BD  
 • 10" Dia. x 12" (NOMINAL I.D.)

MODEL NO.	PRODUCT	DESCRIPTION	APPROX. WEIGHT	QTY PER PALLET
HTV10-S-CIL-1	LID	10"x12" Traffic Valve Box Cover - Import	14	N/A
HTV10-S-BD-1	VALVE BOX	10"x12" Traffic Valve Box - Import	63	36
HTV10-S-CIL-USA	LID	10"x12" Traffic Valve Box Cover - USA	14	N/A
HTV10-S-BD-USA	VALVE BOX	10"x12" Traffic Valve Box - USA	14	36

### B 1118/12 TIER 22 HANDHOLE DETAIL

SKU: 200059176

Hardware:  
 • Stainless Steel 1/2" and 3/4" Hex Head Standard Bolts  
 • Penta Head Bolts  
 • One Way Security Bolts  
 • Security Torque Bolts

Options:  
 • Standard and custom Nameplates  
 • Mouse Holes  
 • Knock Outs  
 • Power EMS Cover  
 • AMR Cover

Load Ratings:  
 • ANSI/SCTE77 Tier 15 & Tier 22  
 • WUC 3.6

Boxes are Open Bottom and Stackable

PART NO.	DESCRIPTION	APPROX. WEIGHT LBS.	QTY. PER PALLET
200016525	HPC 1118-12 Straight Wall Polymer Concrete Handhole Box w/ 1/2-13 SS Nut	56.00	1
200016489	HPC 1118-12 Configurable TIER-22 Solid Polymer Concrete Handhole Cover	NA	1

### C 2436/36 TIER 22 HANDHOLE DETAIL

SKU: 200059032

Hardware:  
 • Stainless Steel 1/2" and 3/4" Hex Head Standard Bolts  
 • Penta Head Bolts  
 • One Way Security Bolts  
 • Security Torque Bolts

Options:  
 • Standard and custom Nameplates  
 • Mouse Holes  
 • Knock Outs  
 • Power EMS Cover  
 • AMR Cover

Load Ratings:  
 • ANSI/SCTE77 Tier 15 & Tier 22  
 • WUC 3.6

Boxes are Open Bottom and Stackable

PART NO.	DESCRIPTION	APPROX. WEIGHT LBS.	QTY. PER PALLET
200022186	HPC 2436-36 Straight Wall Polymer Concrete Handhole Box w/ 1/2-13 SS Nut	86	1
100032420	HPC 2436-36 Bolt Down TIER-22 Solid Polymer Concrete Handhole Cover BLANK	NA	1

### D FLOWERPOT & HANDHOLE OFFSET DETAIL

NOTES:  
 • HANDHOLE AND FLOWERPOT OFFSETS ARE MEASURED FROM CENTER OF HANDHOLE/FLOWERPOT.  
 • HANDHOLE AND FLOWERPOT OFFSETS ARE 4' OFF FENCE. IF NO FENCE IS AVAILABLE, USE PROPERTY LINE.  
 • IN LOCATIONS WHERE 4' OFFSET FROM FENCE/PROPERTY LINE IS NOT FEASIBLE DUE TO SPACE RESTRICTION, PLACE EDGE OF HANDHOLE/FLOWERPOT AGAINST FENCE/PROPERTY LINE.  
 • DO NOT PLACE ANY HANDHOLE/FLOWERPOT IN THE STREET. ALL HANDHOLE/FLOWERPOT SHALL BE PLACED IN THE SHOULDER WITHIN THE PUE.  
 • TRENCHLINE OFFSETS ARE VARIABLE AND ARE NOTED ON APPLICABLE DRAWINGS.

OFFSET DETAIL WITHOUT STREET CROSSING

OFFSET DETAIL WITH STREET CROSSING

\*FROM FENCE/PL TO CENTER OF BOX IS A 4' OFFSET

1010/12 FLOWERPOT  
 1118/12 TIER 22 HANDHOLE  
 2436/36 TIER 22 HANDHOLE

TRENCH OFFSET IS VARIABLE, SEE DRAWINGS

\*FROM FENCE/PL TO CENTER OF BOX IS A 4' OFFSET

1010/12 FLOWERPOT  
 1118/12 TIER 22 HANDHOLE

### E 1730 HANDHOLE DETAIL

17" x 30" x 11" (INSIDE DIMENSIONS)  
 MEETS CALTRANS # 6T  
 NDOT #7, ADOT #7T SPECIFICATIONS

DESIGN LOAD: H-20 FULL TRAFFIC

CATALOG NUMBER	PRODUCT	DESCRIPTION	APPROX. WT. (LBS.)
CYB1730	BOX WITH SLAB	REINFORCED CONCRETE	288
CY1730SL	COVER	STEEL CHECKER PLATE	112
CY1730EXT	EXTENSION	12" HIGH REINFORCED CONCRETE	244
CYHDB1730	HOLD DOWN BOLT	HOLD DOWN PENTAHEAD BOLT (2 EA.)	

### F 3048 HANDHOLE DETAIL

WHEN ORDERING:  
 THE STANDARD SBC AR3048 KIT INCLUDES THE AR3048 BOX, (2) AR3048 EXTENSIONS, AR3048 LID, AND THE AR3048 SLAB. FOR OTHER COMPONENTS, ORDER BY CATALOG NUMBER.

CATALOG NUMBER	PRODUCT	DESCRIPTION	APPROX. WT. (LBS.)
AR3048	BOX	POLYMER CONCRETE 18"	190 LBS.
AR304802TELE	LID	POLYMER CONCRETE 3"	94 LBS.
AR3048EX	EXTENSION	POLYMER CONCRETE 12"	136 LBS.
AR3048SL	SLAB	POLYMER CONCRETE 2"	120 LBS.

DESIGN LOAD: LIGHT VEHICULAR TRAFFIC, 10,000 WHEEL LOAD



JOB NO. HIDDEN HILLS - PHASE 1 (JIM BRIDGER/ASHLEY RIDGE)

LOCATION HIDDEN HILLS, CA

ENGR JOY PADILLA TEL 909-457-8448

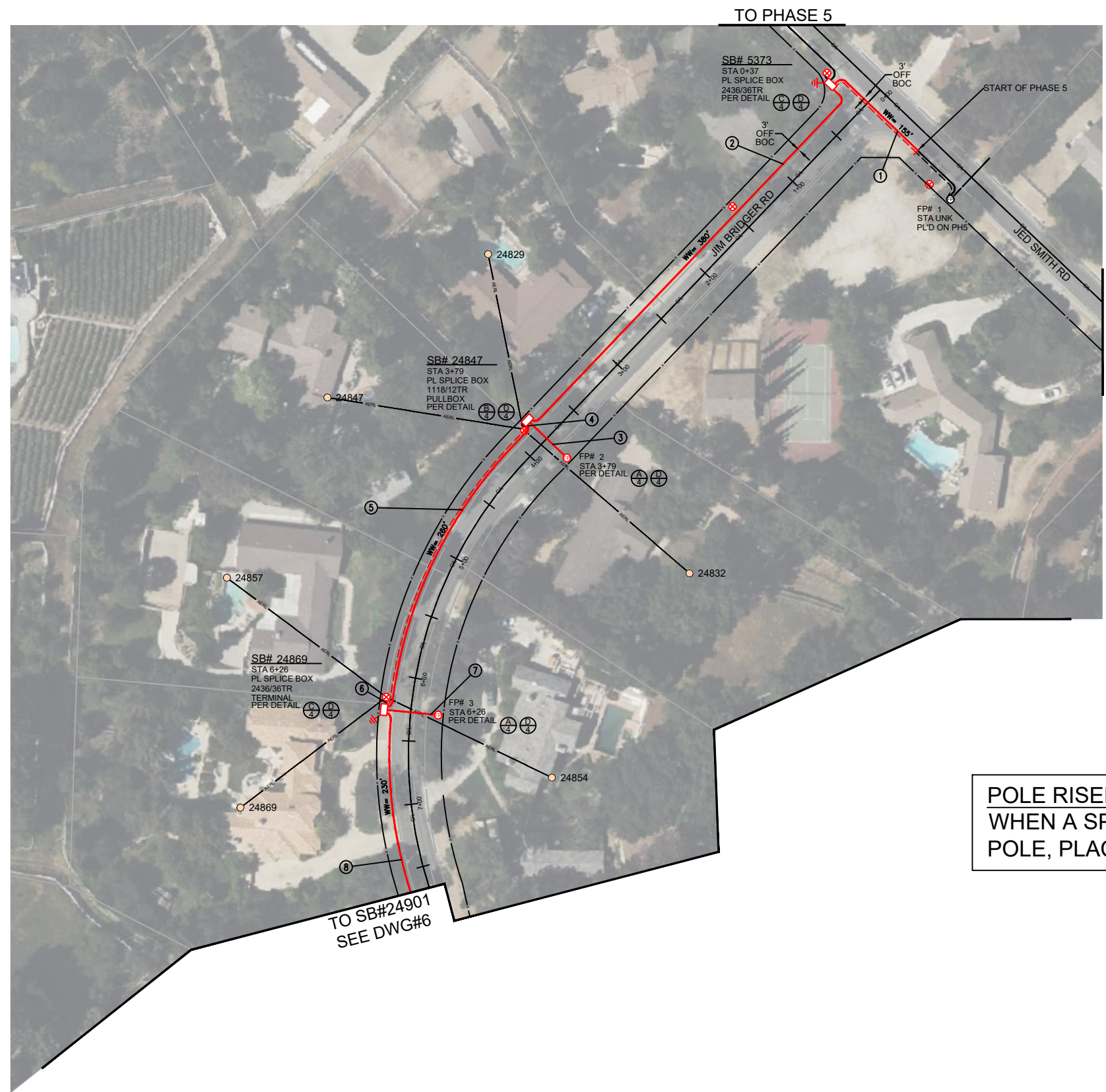
SUBJECT TYPICAL BOX DETAILS

TYPE OF CONST DUCT PLACEMENT

DWG 4 OF 11

VERSION 09/07/2023

SHEET INDEX	
DWG 1 - COVER PAGE	
DWG 2 - BILL OF MATERIALS	
DWG 3 - TYPICAL CONST. DETAILS	
DWG 4 - TYPICAL BOX DETAILS	
DWG 5 TO 11 - CONDUIT DESIGN	



- PLACEMENT PH 1A (QTY 3):**  
 \*NO ASPHALT RESTORATION REQUIRE. SLURRY TO GRADE
- ① SB#5373 0+37 TO START OF PHASE 5  
 PLACE 95'  
 (3) 1.25" SDR11  
 40" COVER PER AS-BUILTS  
 PER DETAIL (J/3)
  - ③ SB#24847 3+79 TO FP#2 3+79  
 PLACE 45'  
 (2) 1.25" SDR11  
 40" COVER PER AS-BUILTS  
 PER DETAIL (J/3)
  - ⑦ SB#24869 6+26 TO FP#3 6+26  
 PLACE 45'  
 (2) 1.25" SDR11  
 40" COVER PER AS-BUILTS  
 PER DETAIL (J/3)
- COMPLETED 05/04/2023  
 MARKERS ON ENDS**

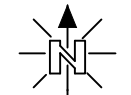
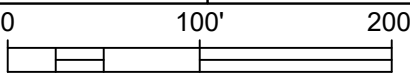
- PLACEMENT PH 1B:**
- ② SB#5373 0+37 TO SB#24827 3+79  
 PLACE 380'  
 (2) 1.25" SDR11  
 PER DETAIL (A/3)
  - ④ SB#24847 3+79 TO RISER POLE  
 PLACE 10'  
 (2) 1.25" SDR11  
 PER DETAIL (A/3) (K/3)
  - ⑤ SB#24847 3+79 TO SB#24869 6+26  
 PLACE 260'  
 (5) 1.25" SDR11  
 PER DETAIL (A/3)
  - ⑥ SB#24869 6+26 TO RISER POLE  
 PLACE 10'  
 (2) 1.25" SDR11  
 PER DETAIL (A/3) (K/3)
  - ⑧ SB#24869 6+26 TO SB#24901 8+42  
 PLACE 230'  
 (2) 1.25" SDR11  
 PER DETAIL (A/3)

**POLE RISER NOTE:**  
 WHEN A SPLICE BOX IS PLACED NEXT TO A POLE, PLACE RISER PER DETAIL K ON DWG#3



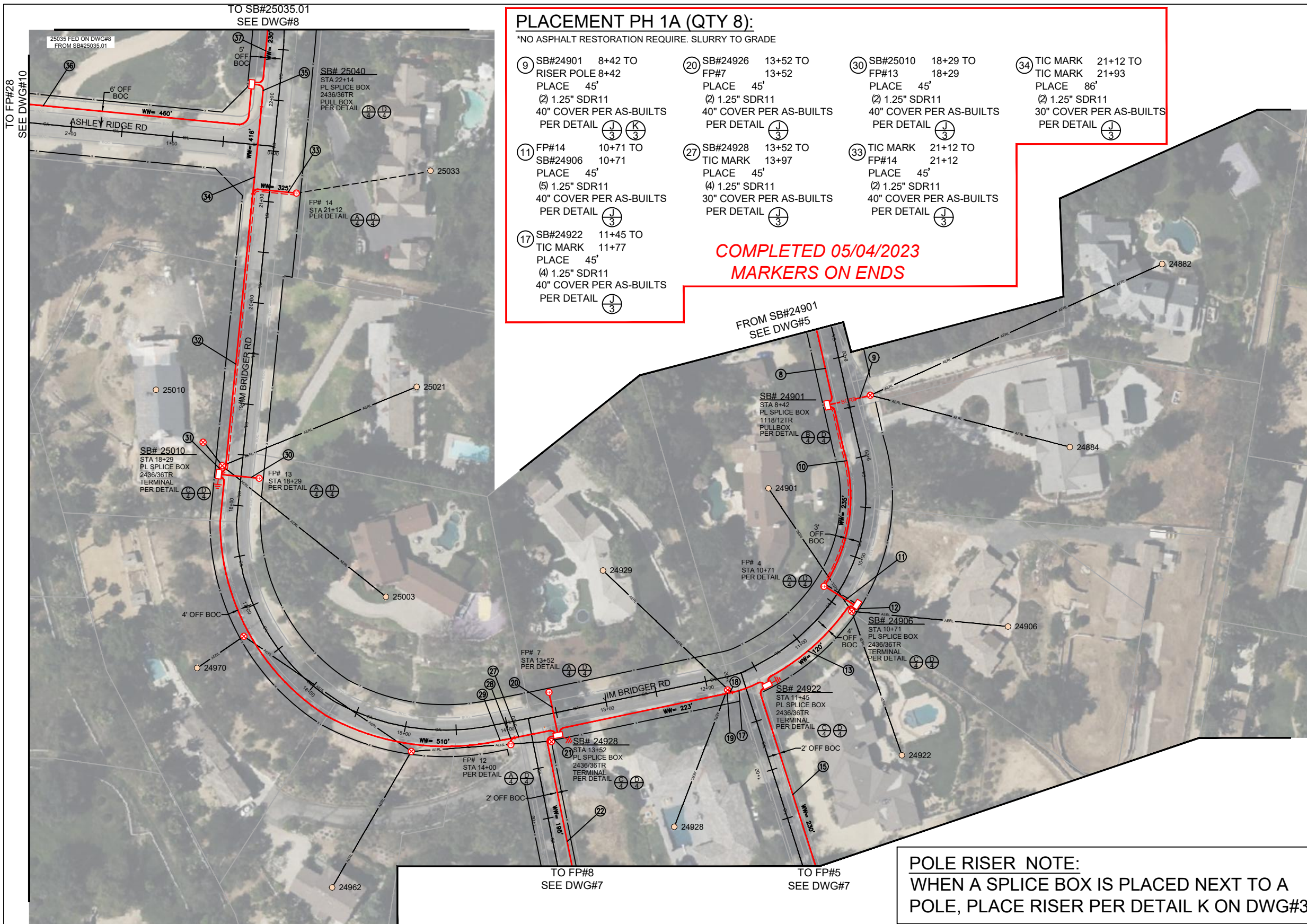
JOB NO. HIDDEN HILLS - PHASE 1 (JIM BRIDGER/ASHLEY RIDGE)  
 LOCATION HIDDEN HILLS, CA  
 ENGR JOY PADILLA TEL 909-457-8448

SUBJECT TRENCH ALIGNMENT  
 TYPE OF CONST DUCT PLACEMENT  
 DWG 5 OF 11

VERSION 09/07/2023  
  


**SHEET INDEX**

DWG 1 - COVER PAGE
DWG 2 - BILL OF MATERIALS
DWG 3 - TYPICAL CONST. DETAILS
DWG 4 - TYPICAL BOX DETAILS
DWG 5 TO 11 - CONDUIT DESIGN

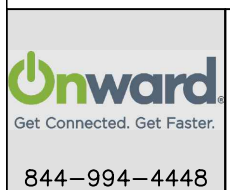


- PLACEMENT PH 1A (QTY 8):**  
 \*NO ASPHALT RESTORATION REQUIRE. SLURRY TO GRADE
- ⑨ SB#24901 8+42 TO RISER POLE 8+42 PLACE 45' (2) 1.25" SDR11 40" COVER PER AS-BUILTS PER DETAIL (J) (K) (3)
  - ⑩ FP#14 10+71 TO SB#24906 10+71 PLACE 45' (5) 1.25" SDR11 40" COVER PER AS-BUILTS PER DETAIL (J) (3)
  - ⑪ SB#24922 11+45 TO TIC MARK 11+77 PLACE 45' (4) 1.25" SDR11 40" COVER PER AS-BUILTS PER DETAIL (J) (3)
  - ⑫ SB#24926 13+52 TO FP#7 13+52 PLACE 45' (2) 1.25" SDR11 40" COVER PER AS-BUILTS PER DETAIL (J) (3)
  - ⑬ SB#24928 13+52 TO TIC MARK 13+97 PLACE 45' (4) 1.25" SDR11 30" COVER PER AS-BUILTS PER DETAIL (J) (3)
  - ⑭ SB#25010 18+29 TO FP#13 18+29 PLACE 45' (2) 1.25" SDR11 40" COVER PER AS-BUILTS PER DETAIL (J) (3)
  - ⑮ TIC MARK 21+12 TO TIC MARK 21+93 PLACE 86' (2) 1.25" SDR11 30" COVER PER AS-BUILTS PER DETAIL (J) (3)
  - ⑯ FP#14 21+12 TO FP#14 21+12 PLACE 45' (2) 1.25" SDR11 40" COVER PER AS-BUILTS PER DETAIL (J) (3)

**COMPLETED 05/04/2023  
 MARKERS ON ENDS**

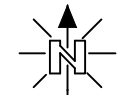
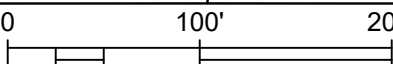
- PLACEMENT PH 1B:**
- ⑧ SB#24869 6+26 TO SB#24901 8+42 PL'D ON DWG#5 (2) 1.25" SDR11 PER DETAIL (A) (3)
  - ⑩ SB#24901 8+42 TO FP#14 10+71 PLACE 190' (4) 1.25" SDR11 PER DETAIL (A) (C) (3)
  - ⑫ SB#24906 10+71 TO RISER POLE PLACE 10' 1.25" SDR11 PER DETAIL (A) (K) (3)
  - ⑬ SB#24906 10+71 TO SB#24922 11+45 PLACE 120' (2) 1.25" SDR11 PER DETAIL (A) (3)
  - ⑮ SB#24922 11+45 TO FP#5 2+28 PLACE 230' (2) 1.25" SDR11 PER DETAIL (A) (3)
  - ⑰ TIC MARK 11+77 TO RISER POLE 11+80 PLACE 10' (2) 1.25" SDR11 PER DETAIL (A) (K) (3)
  - ⑲ TIC MARK 11+77 TO SB#24926 13+52 PLACE 178' (2) 1.25" SDR11 PER DETAIL (A) (3)
  - ⑳ SB#24926 13+52 TO POLE RISER PLACE 10' (2) 1.25" SDR11 PER DETAIL (A) (3)
  - ㉒ SB#24926 13+52 TO FP#8 2+04 PLACE 195' (2) 1.25" SDR11 PER DETAIL (A) (3)
  - ㉔ TIC MARK 13+97 TO POLE RISER PLACE 10' (4) 1.25" SDR11 PER DETAIL (A) (K) (3)
  - ㉖ TIC MARK 13+97 TO SB#25010 18+29 PLACE 465' (2) 1.25" SDR11 PER DETAIL (A) (3)
  - ㉘ SB#25010 18+29 TO POLE RISER PLACE 10' (2) 1.25" SDR11 PER DETAIL (A) (K) (3)
  - ㉚ SB#25010 18+29 TO TIC MARK 21+12 PLACE 280' (4) 1.25" SDR11 PER DETAIL (A) (3)
  - ㉜ TIC MARK 21+93 TO SB#25040 22+14 PLACE 50' (2) 1.25" SDR11 PER DETAIL (A) (3)
  - ㉞ SB#25040 22+14 TO FP#28 4+78 PLACE 460' (2) 1.25" SDR11 PER DETAIL (A) (3)
  - ㉟ SB#25040 22+14 TO SB#23035.01 24+44 PLACE 230' (2) 1.25" SDR11 PER DETAIL (A) (3)

**POLE RISER NOTE:**  
 WHEN A SPLICE BOX IS PLACED NEXT TO A POLE, PLACE RISER PER DETAIL K ON DWG#3



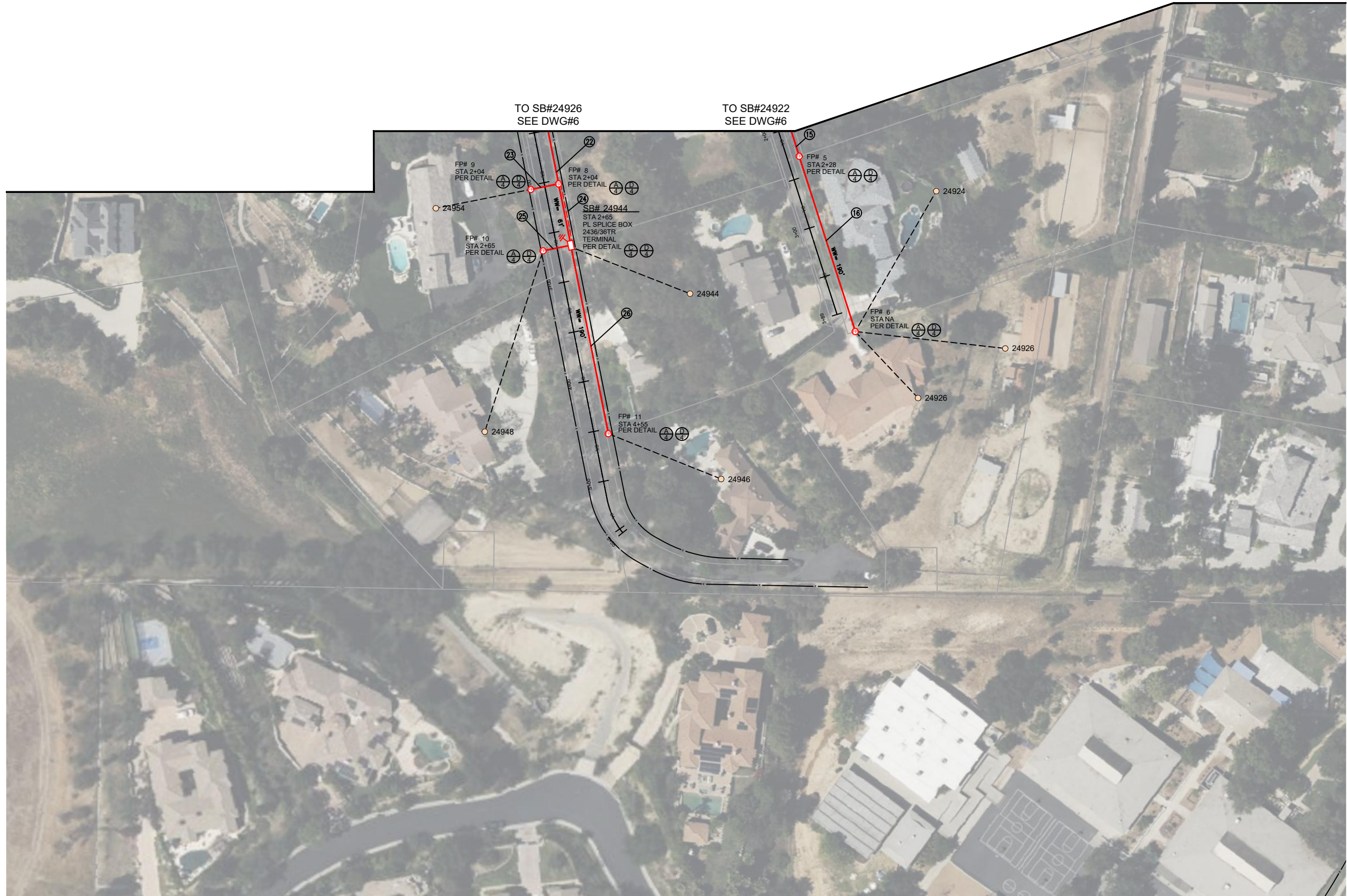
JOB NO. HIDDEN HILLS - PHASE 1 (JIM BRIDGER/ASHLEY RIDGE)  
 LOCATION HIDDEN HILLS, CA  
 ENGR JOY PADILLA TEL 909-457-8448

SUBJECT TRENCH ALIGNMENT  
 TYPE OF CONST DUCT PLACEMENT  
 DWG 6 OF 11

VERSION 09/07/2023  
  


**SHEET INDEX**

DWG 1 - COVER PAGE
DWG 2 - BILL OF MATERIALS
DWG 3 - TYPICAL CONST. DETAILS
DWG 4 - TYPICAL BOX DETAILS
DWG 5 TO 11 - CONDUIT DESIGN



**PLACEMENT PH 1A (QTY 2):**

\*NO ASPHALT RESTORATION REQUIRE. SLURRY TO GRADE

- ②③ FP#8 2+04 TO  
FP#9 2+04  
PLACE 40'  
② 1.25" SDR11  
42" COVER PER AS-BUILTS  
PER DETAIL (A/3)
- ②⑤ SB#24944 2+65 TO  
FP#10 2+65  
PLACE 40'  
② 1.25" SDR11  
42" COVER PER AS-BUILTS  
PER DETAIL (A/3)

**COMPLETED 05/04/2023  
MARKERS ON ENDS**

**PLACEMENT PH 1B:**

- ①⑤ SB#24922 11+45 TO  
FP#5 2+28  
PL'D ON DWG#6  
② 1.25" SDR11  
PER DETAIL (A/3)
- ①⑥ FP#5 2+28 TO  
FP#6  
PLACE 190'  
③ 1.25" SDR11  
PER DETAIL (A/3)
- ②② SB#24926 13+52 TO  
FP#8 2+04  
PL'D ON DWG#6  
② 1.25" SDR11  
PER DETAIL (A/3)
- ②④ FP#8 2+04 TO  
SB#24944 2+65  
PLACE 61'  
③ 1.25" SDR11  
PER DETAIL (A/3)
- ②⑥ SB#24944 2+65 TO  
FP#11 4+55  
PLACE 190'  
② 1.25" SDR11  
PER DETAIL (A/3)



JOB NO. HIDDEN HILLS - PHASE 1 (JIM BRIDGER/ASHLEY RIDGE)  
 LOCATION HIDDEN HILLS, CA  
 ENGR JOY PADILLA TEL 909-457-8448

SUBJECT TRENCH ALIGNMENT  
 TYPE OF CONST DUCT PLACEMENT  
 DWG 7 OF 11

VERSION 09/07/2023

**SHEET INDEX**

DWG 1 - COVER PAGE
DWG 2 - BILL OF MATERIALS
DWG 3 - TYPICAL CONST. DETAILS
DWG 4 - TYPICAL BOX DETAILS
DWG 5 TO 11 - CONDUIT DESIGN



**PLACEMENT PH 1A (QTY 4):**  
 \*NO ASPHALT RESTORATION REQUIRE. SLURRY TO GRADE

38	SB#23035.01	24+44 TO 24+44	FP#15	24+44	PLACE 50'	(2) 1.25" SDR11	44" COVER PER AS-BUILTS PER DETAIL	(A/3)
40	SB#25090	27+75 TO 27+75	FP#16	27+75	PLACE 50'	(2) 1.25" SDR11	44" COVER PER AS-BUILTS PER DETAIL	(A/3)
42	SB#25120	30+69 TO 30+69	FP#17	30+69	PLACE 50'	(2) 1.25" SDR11	44" COVER PER AS-BUILTS PER DETAIL	(A/3)
44	SB#25130	33+77 TO 33+77	FP#18	33+77	PLACE 50'	(2) 1.25" SDR11	44" COVER PER AS-BUILTS PER DETAIL	(A/3)

**COMPLETED 05/04/2023  
 MARKERS ON ENDS**

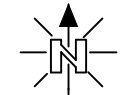
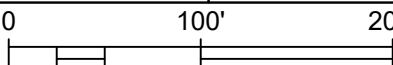
**PLACEMENT PH 1B:**

37	SB#25040	22+14 TO 22+14	PL'D ON DWG#6	(2) 1.25" SDR11	PER DETAIL	(A/3)
39	SB#23035.01	24+44 TO 27+75	PLACE 325'	(5) 1.25" SDR11	PER DETAIL	(A/3)
41	SB#25090	27+75 TO 30+69	PLACE 290'	(2) 1.25" SDR11	PER DETAIL	(A/3)
43	SB#25120	30+69 TO 33+77	PLACE 312'	(4) 1.25" SDR11	PER DETAIL	(A/3)
45	SB#25130	33+77 TO 37+56	PLACE 385'	(2) 1.25" SDR11	PER DETAIL	(A/3)



JOB NO. HIDDEN HILLS - PHASE 1 (JIM BRIDGER/ASHLEY RIDGE)  
 LOCATION HIDDEN HILLS, CA  
 ENGR JOY PADILLA TEL 909-457-8448

SUBJECT TRENCH ALIGNMENT  
 TYPE OF CONST DUCT PLACEMENT  
 DWG 8 OF 11

VERSION 09/07/2023  
  


**SHEET INDEX**

DWG 1 - COVER PAGE
DWG 2 - BILL OF MATERIALS
DWG 3 - TYPICAL CONST. DETAILS
DWG 4 - TYPICAL BOX DETAILS
DWG 5 TO 11 - CONDUIT DESIGN





TO SB#25085  
SEE DWG#10

FROM SB#25140  
SEE DWG#8

**PLACEMENT PH 1A (QTY 1):**

\*NO ASPHALT RESTORATION REQUIRE. SLURRY TO GRADE

- ④⑥ SB#25140 37+56 TO
- FP#19 37+56
- PLACE 50'
- (4) 1.25" SDR11
- 40" COVER PER AS-BUILTS
- PER DETAIL ③

**COMPLETED 05/04/2023**  
**MARKERS ON ENDS**

**PLACEMENT PH 1B:**

- ④⑤ SB#25130 33+77 TO
- SB#25140 37+56
- PL'D ON DWG#8
- (2) 1.25" SDR11
- PER DETAIL ③
- ④⑦ FP#19 37+56 TO
- SB#25131 1+49
- PLACE 193'
- (3) 1.25" SDR11
- PER DETAIL ③
- ④⑧ SB#25131 1+49 TO
- FP#20 1+20
- PLACE 80'
- (1) 1.25" SDR11
- PER DETAIL ③
- ④⑨ SB#25140 37+56 TO
- SB#25085 41+48
- PLACE 313'
- (2) 1.25" SDR11
- PER DETAIL ③



844-994-4448

JOB NO. HIDDEN HILLS - PHASE 1 (JIM BRIDGER/ASHLEY RIDGE)

LOCATION HIDDEN HILLS, CA

ENGR JOY PADILLA

TEL 909-457-8448

SUBJECT

**TRENCH ALIGNMENT**

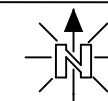
TYPE OF CONST

**DUCT PLACEMENT**

DWG 9 OF 11

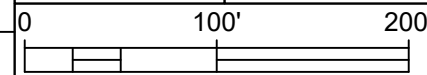
VERSION

09/07/2023



**SHEET INDEX**

- DWG 1 - COVER PAGE
- DWG 2 - BILL OF MATERIALS
- DWG 3 - TYPICAL CONST. DETAILS
- DWG 4 - TYPICAL BOX DETAILS
- DWG 5 TO 11 - CONDUIT DESIGN





**PLACEMENT PH 1A (QTY 7):**  
 \*NO ASPHALT RESTORATION REQUIRE. SLURRY TO GRADE

50 SB#25085 41+48 TO FP#21 41+48 PLACE 50' ② 1.25" SDR11 40" COVER PER AS-BUILTS PER DETAIL (A/3)	57 FP#24 47+72 TO FP#25 47+72 PLACE 50' ② 1.25" SDR11 40" COVER PER AS-BUILTS PER DETAIL (A/3)
52 SB#25085.01 43+58 TO FP#22 43+58 PLACE 50' ② 1.25" SDR11 40" COVER PER AS-BUILTS PER DETAIL (A/3)	63 SB#25065 5+58 TO FP#29 5+58 PLACE 50' ② 1.25" SDR11 40" COVER PER AS-BUILTS PER DETAIL (A/3)
53 SB#25085.01 43+58 TO TIC MARK 44+38 PLACE 80' ② 1.25" SDR11 30" COVER PER AS-BUILTS PER DETAIL (A/3)	65 SB#25067 7+27 TO TIC MARK 0+45 PLACE 72' ③ 1.25" SDR11 40" COVER PER AS-BUILTS PER DETAIL (A/3)
55 SB#25170 46+30 TO FP#23 46+30 PLACE 50' ② 1.25" SDR11 40" COVER PER AS-BUILTS	

**COMPLETED 05/04/2023  
 MARKERS ON ENDS**

**PLACEMENT PH 1B:**

36 SB#25040 22+14 TO FP#28 4+78 PL'D ON DWG#6 ② 1.25" SDR11 PER DETAIL (A/3)	58 FP#24 47+72 TO TIC MARK 51+64 PLACE 392' ② 1.25" SDR11 PER DETAIL (A/3)
49 SB#25140 37+56 TO SB#25085 41+48 PL'D ON DWG#9 ② 1.25" SDR11 PER DETAIL (A/3)	62 FP#28 4+78 TO SB#25065 5+58 PLACE 87' ③ 1.25" SDR11 PER DETAIL (A/3)
51 SB#25085 41+48 TO SB#25085.01 43+58 PLACE 220' ③ 1.25" SDR11 PER DETAIL (A/3)	64 SB#25065 5+58 TO SB#25067 7+27 PLACE 175' ④ 1.25" SDR11 PER DETAIL (A/3)
54 TIC MARK 44+38 TO SB#25170 46+30 PLACE 200' ② 1.25" SDR11 PER DETAIL (A/3)	66 TIC MARK 0+45 TO FP#30 1+04 PLACE 65' ② 1.25" SDR11 PER DETAIL (A/3)
56 SB#25170 46+30 TO FP#24 47+72 PLACE 150' ④ 1.25" SDR11 PER DETAIL (A/3)	67 FP#30 1+04 TO SB#25185 4+43 PLACE 358' ② 1.25" SDR11 PER DETAIL (A/3)

	JOB NO. <u>HIDDEN HILLS - PHASE 1 (JIM BRIDGER/ASHLEY RIDGE)</u>	SUBJECT <b>TRENCH ALIGNMENT</b>	VERSION 09/07/2023		<b>SHEET INDEX</b> DWG 1 - COVER PAGE DWG 2 - BILL OF MATERIALS DWG 3 - TYPICAL CONST. DETAILS DWG 4 - TYPICAL BOX DETAILS DWG 5 TO 11 - CONDUIT DESIGN
	LOCATION <u>HIDDEN HILLS, CA</u>	TYPE OF CONST <b>DUCT PLACEMENT</b>	0  200'		
ENGR <u>JOY PADILLA</u> TEL <u>909-457-8448</u>	DWG <u>10</u> OF <u>11</u>				



**PLACEMENT PH 1A (QTY 3):**  
 \*NO ASPHALT RESTORATION REQUIRE. SLURRY TO GRADE

60	TIC MARK	51+64 TO
	FP#26	51+64
	PLACE	45'
		(2) 1.25" SDR11
		30" COVER PER AS-BUILTS
		PER DETAIL (A/3)
68	SB#25185	4+43 TO
	FP#31	4+43
	PLACE	50'
		(2) 1.25" SDR11
		40" COVER PER AS-BUILTS
		PER DETAIL (A/3)
70	SB#25220	7+30 TO
	FP#32	7+30
	PLACE	50'
		(2) 1.25" SDR11
		40" COVER PER AS-BUILTS
		PER DETAIL (A/3)

**COMPLETED 05/04/2023**  
**MARKERS ON ENDS**

**PLACEMENT PH 1B:**

58	FP#24	47+72 TO
	TIC MARK	51+64
		PL'D ON DWG#10
		(2) 1.25" SDR11
		PER DETAIL (A/3)
59	TIC MARK	51+64 TO
	SB#25210	52+36
	PLACE	73'
		(4) 1.25" SDR11
		PER DETAIL (A/3)
61	SB#25210	52+36 TO
	FP#27	
	PLACE	75'
		(2) 1.25" SDR11
		PER DETAIL (A/3)
67	FP#30	1+04 TO
	SB#25185	4+43
		PL'D ON DWG#10
		(2) 1.25" SDR11
		PER DETAIL (A/3)
68	FP#30	1+04 TO
	SB#25185	4+43
		PL'D ON DWG#10
		(2) 1.25" SDR11
		PER DETAIL (A/3)
69	SB#25185	4+43 TO
	SB#25220	7+30
	PLACE	303'
		(4) 1.25" SDR11
		PER DETAIL (A/3)
71	SB#25220	7+30 TO
	FP#33	10+76
	PLACE	359'
		(2) 1.25" SDR11
		PER DETAIL (A/3)

**Onward**  
 Get Connected. Get Faster.  
 844-994-4448

JOB NO. HIDDEN HILLS - PHASE 1 (JIM BRIDGER/ASHLEY RIDGE)  
 LOCATION HIDDEN HILLS, CA  
 ENGR JOY PADILLA TEL 909-457-8448

SUBJECT  
**TRENCH ALIGNMENT**

TYPE OF CONST  
**DUCT PLACEMENT**

DWG 11 OF 11

VERSION  
 09/07/2023

**SHEET INDEX**

DWG 1 - COVER PAGE
DWG 2 - BILL OF MATERIALS
DWG 3 - TYPICAL CONST. DETAILS
DWG 4 - TYPICAL BOX DETAILS
DWG 5 TO 11 - CONDUIT DESIGN