



# City of Hidden Hills

6165 Spring Valley Road \* Hidden Hills, California 91302  
(818) 888-9281 \* Fax (818) 719-0083

December 5, 2023

## ADDENDUM NO. 1 City of Hidden Hills Fiber to Homes Project

NOTICE IS HEREBY GIVEN to all bidders and plan holders that the plans and specifications for the construction of the above-described project are hereby amended as follows:

### 1. Rock Adder Extra

At the pre-bid meeting, a question was asked if an extra would be allowed should rock be encountered during the trenching/boring work. In an effort to avoid unnecessary costs, delays, and disturbances, the contractor may be allowed a rock adder extra. In the case where rock would not allow the contractor to do conventional trenching or boring, the City inspector shall be notified, allowed to observe and measure, and shall approve the extra work.

The following is to be filled out and included with the bid. As it is unknown if the rock adder will be necessary, or how much will be required, this item is not to be included in the bid totals but will be added to the unit prices bid, when deemed appropriate and as measured by the City.

DESCRIPTION	UNIT	QUANTITY	UNIT PRICES
ROCK "ADDER" EXTRA	LF	TBD	\$

### 2. Phase 2 Line 90

Line 90 at the end of Penland Road shall be located aurally on existing poles, per attached revised DWG's 11 and 16.

### 3. Phase 2 Line 94

Line 94 on Penland Road is to be relocated to the bottom of slope, behind the BOC.

### 4. Phase 2 Line 101

Disregard Line 101 and FP #17 on Lupin Hill Road. This is a future service duct and should have been noted as a black dashed line.

### 5. Phase 2 Line 107

Disregard Line 107 and FP #20 on Lupin Hill Road. This is a future service duct and should have

been noted as a black dashed line.

**6. Phase 2 Lines 127 and 130**

Lines 127 and 130, along with SB#5350.1 and SB#5303 shall be relocated to the other side of Lasher Road, behind the BOC.

**7. Working Days**

The Notice Inviting Bids is hereby amended to say:

“**Completion of Work.** All work shall be completed within 250 working days following written notice to proceed from the City.”

**8. Bid Bond**

One bid bond may be submitted for all 5 phases in Bid Schedule A, and Bid Schedule B

---

Full compensation for all work and requirements of this addendum shall be considered as included in the appropriate price bid and no additional compensation will be allowed therefore.

---

Dirk Lovett, City Engineer

Acknowledgment of the Addendum by signing and returning a copy with your bid is required. Failure to do so may result in the disqualification of your bid.

RECEIPT OF THIS ADDENDUM IS HEREBY ACKNOWLEDGED:

\_\_\_\_\_  
Firm

\_\_\_\_\_  
DATE

BY: \_\_\_\_\_

**PLACEMENT NOTES:**

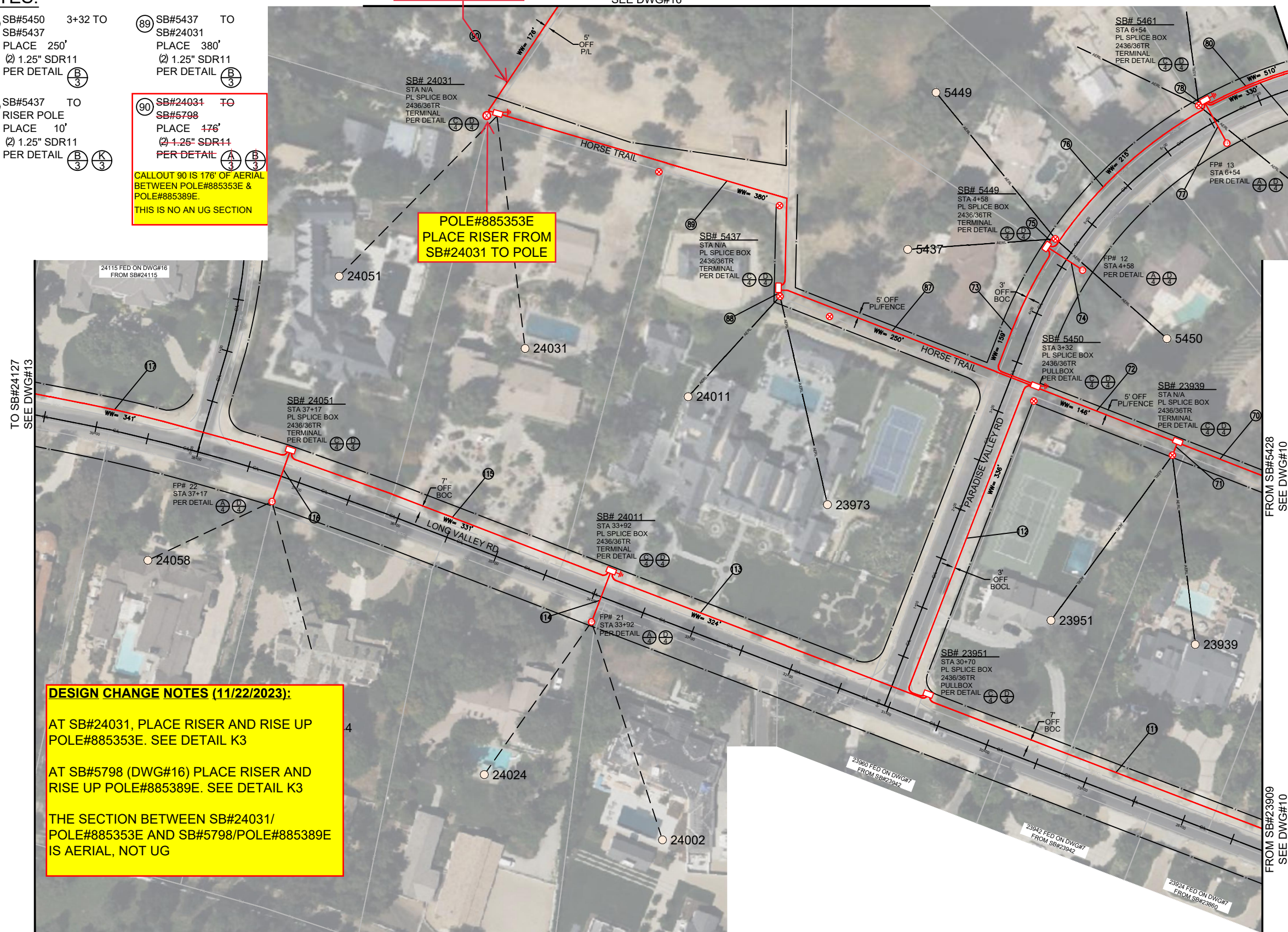
- (70) SB#5428 TO SB#23939 PL'D ON DWG#10 (2) 1.25" SDR11 PER DETAIL (B/3)
- (71) SB#23939 TO RISER POLE PLACE 10' (2) 1.25" SDR11 PER DETAIL (B/3) (K/3)
- (72) SB#23939 TO SB#5450 3+32 PLACE 146' (2) 1.25" SDR11 PER DETAIL (B/3)
- (73) SB#5450 3+32 TO SB#5449 4+58 PLACE 159' (2) 1.25" SDR11 PER DETAIL (A/3) (J/3)
- (74) SB#5449 4+58 TO FP#12 4+58 PLACE 45' (2) 1.25" SDR11 PER DETAIL (A/3) (J/3)
- (75) SB#5449 4+58 TO RISER POLE PLACE 10' (2) 1.25" SDR11 PER DETAIL (A/3) (K/3)
- (76) SB#5449 4+58 TO SB#5461 6+54 PLACE 215' (2) 1.25" SDR11 PER DETAIL (A/3)
- (77) SB#5461 6+46 TO FP#13 6+46 PLACE 45' (2) 1.25" SDR11 PER DETAIL (A/3) (J/3)
- (78) SB#5461 6+46 TO RISER POLE PLACE 10' (2) 1.25" SDR11 PER DETAIL (A/3) (K/3)
- (79) SB#5461 6+46 TO SB#5525 9+67 PLACE 330' (2) 1.25" SDR11 PER DETAIL (A/3) (J/3)
- (80) SB#5461 6+46 TO SB#5515 3+32 PLACE 510' (2) 1.25" SDR11 PER DETAIL (A/3)
- (87) SB#5450 3+32 TO SB#5437 PLACE 250' (2) 1.25" SDR11 PER DETAIL (B/3)
- (88) SB#5437 TO RISER POLE PLACE 10' (2) 1.25" SDR11 PER DETAIL (B/3) (K/3)
- (89) SB#5437 TO SB#24031 PLACE 380' (2) 1.25" SDR11 PER DETAIL (B/3)

(90) SB#24031 TO SB#5798 PLACE 176' (2) 1.25" SDR11 PER DETAIL (A/3) (B/3)

**CALLOUT 90 IS 176' OF AERIAL BETWEEN POLE#885353E & POLE#885389E. THIS IS NO AN UG SECTION**

**AERIAL SECTION**

TO SB#5798  
SEE DWG#16



**POLE#885353E  
PLACE RISER FROM  
SB#24031 TO POLE**

**DESIGN CHANGE NOTES (11/22/2023):**

AT SB#24031, PLACE RISER AND RISE UP POLE#885353E. SEE DETAIL K3

AT SB#5798 (DWG#16) PLACE RISER AND RISE UP POLE#885389E. SEE DETAIL K3

THE SECTION BETWEEN SB#24031/ POLE#885353E AND SB#5798/POLE#885389E IS AERIAL, NOT UG

**PLACEMENT NOTES:**

- (11) SB#23909 24+76 SB#23951 30+70 PL'D ON DWG#10 (3) 1.25" SDR11 PER DETAIL (A/3)
- (12) SB#23951 30+70 TO SB#5450 3+32 PLACE 336' (2) 1.25" SDR11 PER DETAIL (A/3)
- (13) SB#23951 30+70 TO SB#24011 33+92 PLACE 324' (3) 1.25" SDR11 PER DETAIL (A/3) (J/3)
- (14) SB#24011 33+92 TO FP#20 33+92 PLACE 55' (2) 1.25" SDR11 PER DETAIL (A/3) (J/3)
- (15) SB#24011 33+92 TO SB#24051 37+17 PLACE 331' (3) 1.25" SDR11 PER DETAIL (A/3)
- (16) SB#24051 37+17 TO FP#21 37+17 PLACE 55' (2) 1.25" SDR11 PER DETAIL (A/3) (J/3)
- (17) SB#24051 37+17 TO SB#24127 40+55 PLACE 341' (3) 1.25" SDR11 PER DETAIL (A/3) (J/3)



JOB NO. HIDDEN HILLS - PHASE 2  
 LOCATION HIDDEN HILLS, CA  
 ENGR JOY PADILLA TEL 909-457-8448

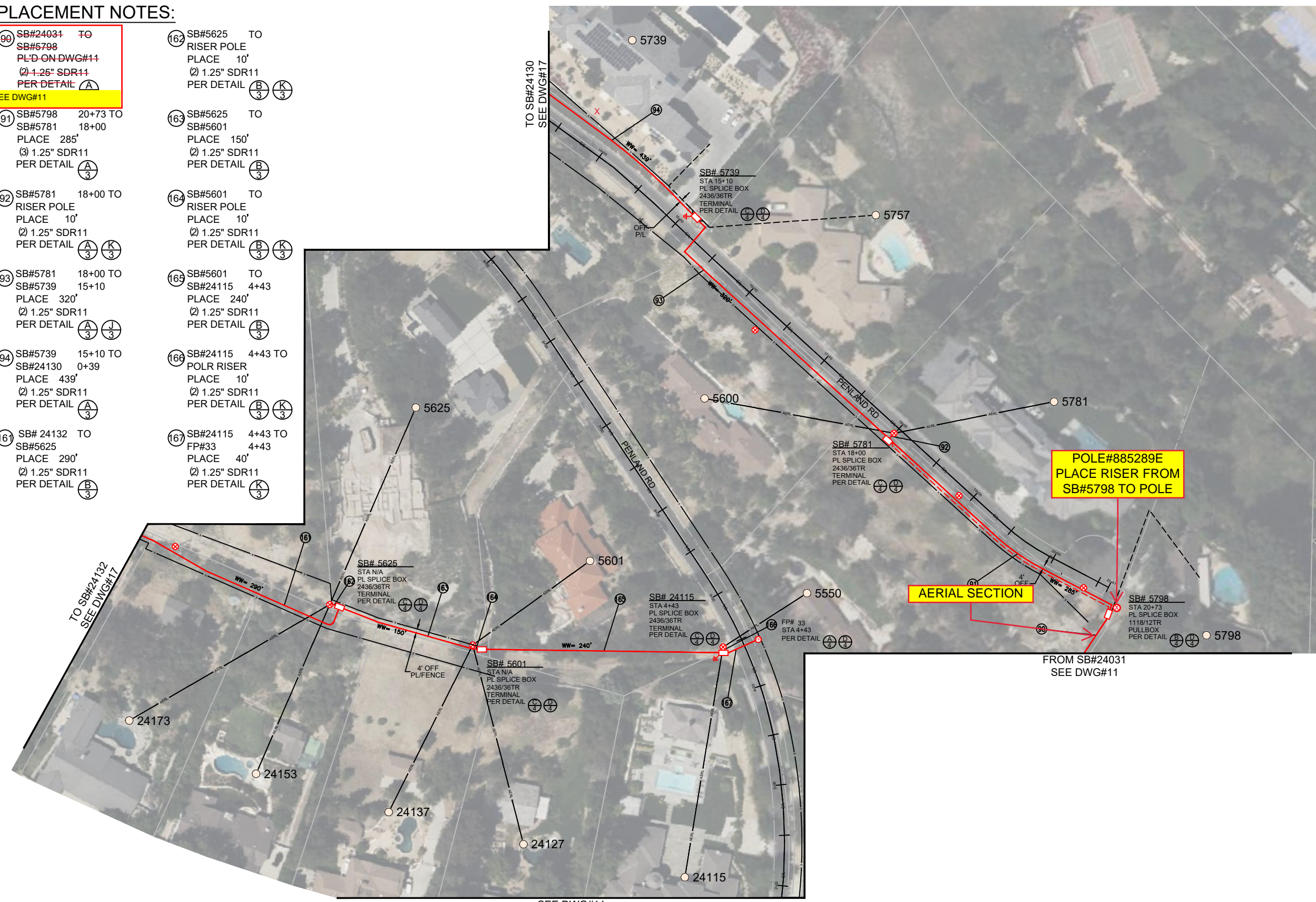
SUBJECT TRENCH ALIGNMENT  
 TYPE OF CONST DUCT PLACEMENT  
 DWG 11 OF 19

VERSION 09/07/2023

**SHEET INDEX**  
 DWG 1 - COVER PAGE  
 DWG 2 - BILL OF MATERIALS  
 DWG 3 - TYPICAL CONST. DETAILS  
 DWG 4 - TYPICAL BOX DETAILS  
 DWG 5 TO 19 - CONDUIT DESIGN

**PLACEMENT NOTES:**

- 90 SB#24031 TO SB#5798  
 PL'D ON DWG#11  
 (2) 1.25" SDR11  
 PER DETAIL (A)  
 SEE DWG#11
- 91 SB#5798 20+73 TO SB#5781 18+00  
 PLACE 285'  
 (3) 1.25" SDR11  
 PER DETAIL (A/3)
- 92 SB#5781 18+00 TO RISER POLE  
 PLACE 10'  
 (2) 1.25" SDR11  
 PER DETAIL (A/3) (K/3)
- 93 SB#5781 18+00 TO SB#5739 15+10  
 PLACE 320'  
 (2) 1.25" SDR11  
 PER DETAIL (A/3) (J/3)
- 94 SB#5739 15+10 TO SB#24130 0+39  
 PLACE 439'  
 (2) 1.25" SDR11  
 PER DETAIL (A/3)
- 161 SB# 24132 TO SB#5625  
 PLACE 290'  
 (2) 1.25" SDR11  
 PER DETAIL (B/3)
- 162 SB#5625 TO RISER POLE  
 PLACE 10'  
 (2) 1.25" SDR11  
 PER DETAIL (B/3) (K/3)
- 163 SB#5625 TO SB#5601  
 PLACE 150'  
 (2) 1.25" SDR11  
 PER DETAIL (B/3)
- 164 SB#5601 TO RISER POLE  
 PLACE 10'  
 (2) 1.25" SDR11  
 PER DETAIL (B/3) (K/3)
- 165 SB#5601 TO SB#24115 4+43  
 PLACE 240'  
 (2) 1.25" SDR11  
 PER DETAIL (B/3)
- 166 SB#24115 4+43 TO POLR RISER  
 PLACE 10'  
 (2) 1.25" SDR11  
 PER DETAIL (B/3) (K/3)
- 167 SB#24115 4+43 TO FP#33 4+43  
 PLACE 40'  
 (2) 1.25" SDR11  
 PER DETAIL (K/3)



	JOB NO. <u>HIDDEN HILLS - PHASE 2</u>	SUBJECT <b>TRENCH ALIGNMENT</b>	VERSION 09/07/2023		<b>SHEET INDEX</b> DWG 1 - COVER PAGE DWG 2 - BILL OF MATERIALS DWG 3 - TYPICAL CONST. DETAILS DWG 4 - TYPICAL BOX DETAILS DWG 5 TO 19 - CONDUIT DESIGN	
	LOCATION <u>HIDDEN HILLS, CA</u>	TYPE OF CONST <b>DUCT PLACEMENT</b>				
	ENGR <u>JOY PADILLA</u> TEL <u>909-457-8448</u>	DWG <u>16</u> OF <u>19</u>				
	844-994-4448					