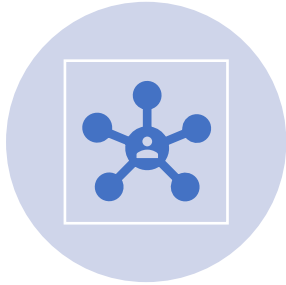


HIDDEN HILLS

FIBER

LIGHTNING FAST INTERNET

Why a Fiber to the Home Project



Dedicated, Symmetrical Connectivity – All subscribers will receive a minimum of 2GB. The network will be scalable to 10 GB. It's also symmetrical – meaning the upload and download speeds are the same. Today and into the future, connectivity is about interactive video (remote work, Zoom, online learning), uploading huge files (video, cloud backup of computers,) and online gaming.



Dependability – The Hidden Hills Fiber network will be a new network built using the latest technology. Existing networks are based on legacy infrastructure (either phone lines or copper cable). Consequently, the Hidden Hills Fiber network will be more reliable with fewer outages, downtime, and loss of service based on overuse. Power backup in the form of battery and deployable generators will keep Hidden Hills connected.



New Modern Infrastructure Capabilities – Because the fiber network provides dedicated bandwidth and symmetrical connections, it provides the backbone for future modern infrastructure advancements. Think community wifi, improved cell coverage, enhanced public safety. It all begins with Fiber.



Enhanced Communication – Residents are using traditional phone landlines less and less. Improved reliable internet will help keep everyone connected.

HIDDEN HILLS
FIBER
LIGHTNING FAST INTERNET



Inyo/Onward

- Onward (formerly Inyo) is the preferred City partner following response to the RFP
- California Licensed Exchange Carrier
- Has designed, built, and managed more than 20 publicly owned broadband networks
- Partners include – Culver City, Ontario, Rancho Cucamonga, Vallejo, and Community of Nicasio





Estimated Project Cost

\$7,000,000



Network

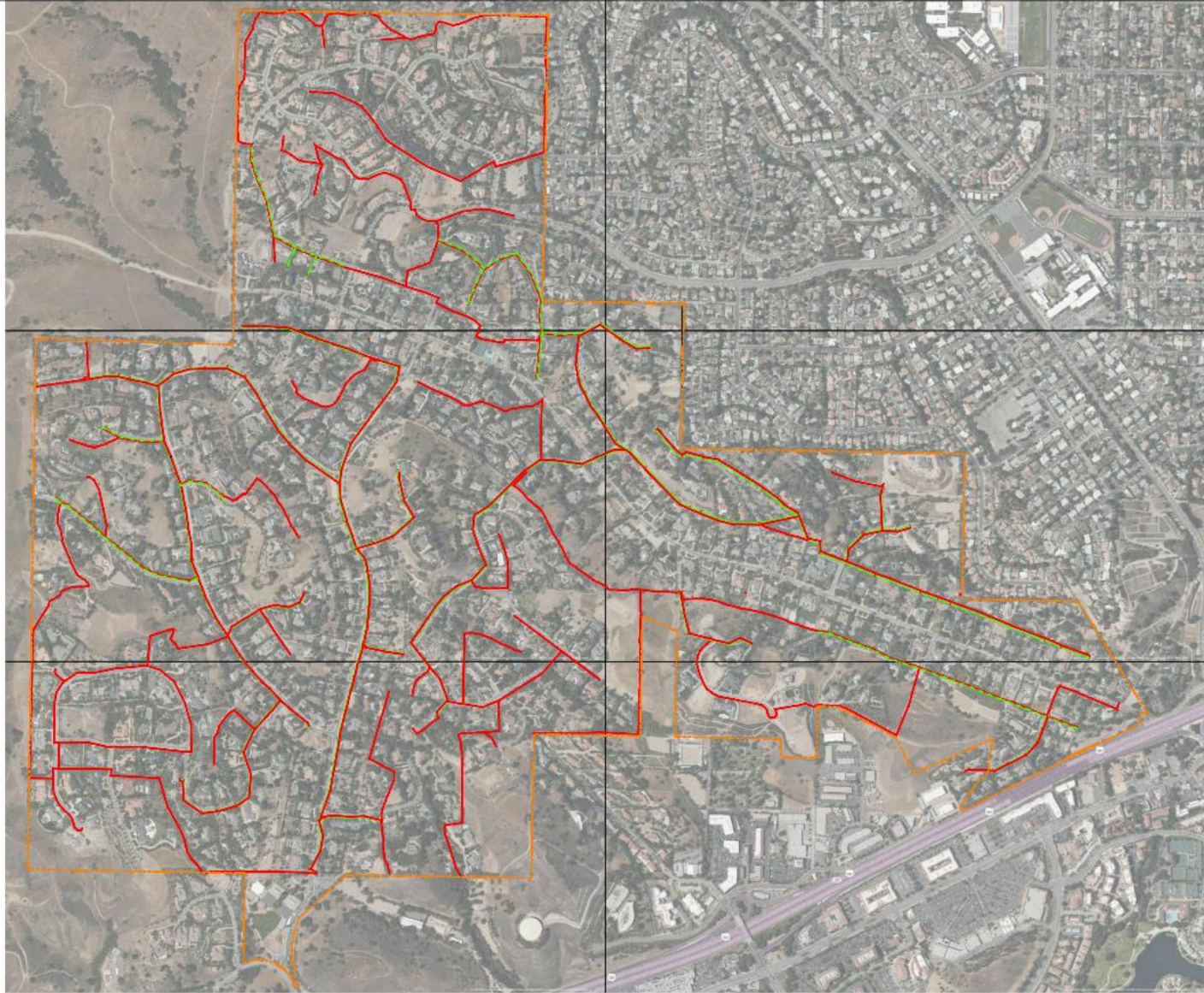
Minimum 2GB dedicated and symmetrical

Scalable to 10 GB

2 points of redundancy

Estimated monthly subscription \$150

Lateral connection to home of up to 150 feet included



HIDDEN HILLS

PROPOSED FIBER OPTIC
BACKBONE INSTALLATION

HIDDEN HILLS STRUCTURE:
AERIAL: 43,575'
UNDERGROUND: 94,407'

HIDDEN HILLS
FIBER
LIGHTNING FAST INTERNET

Construction

- Estimated 4-6 months for build out
- Fiber to be primarily underground
- Route to follow existing utility easements which could be through trails, parkways, and roads
- Traditional trenching
- Two crews will work simultaneously
- Crews will trench, lay fiber, and backfill 1,500 feet per day. Construction will only be in front of each residence for one day.

Easements and Right of Ways

- It is expected that 90% of the route will follow existing utility easements
- City is committed to working with HOA to obtain necessary remaining easements and encroachment permits
- Completion of Design Engineering will determine which areas need easements

MOU with Onward

- Create a road map and stages for completion of project
- Complete negotiations on Master Service Agreement
- Four Stages
 - Stage 1 – Secure ROW and easements, Design Engineering, Permitting
 - Stage 2 – Logistics, Material Procurement, Marketing and Outreach
 - Stage 3 – Construction and Testing
 - Stage 4 – Marketing, Operations, Maintenance, Helpdesk

Next Steps

- Design Engineering
- Finalize Easements
- Updated Agreement with Magellan/Jory Wolf on Project Consultation
- Master Service Agreement with Onward
- Secure Funding